

THIS DRAWING IS UNPUBLISHED.

RELEASED FOR PUBLICATION

© COPYRIGHT - BY TYCO ELECTRONICS CORPORATION. ALL RIGHTS RESERVED.

LOC

DIST

REVISIONS

GP

00

P

LTR

DESCRIPTION

DATE

DWN

APVD

A

NEW RELEASE

26FEB07

RG

DO

1. PART NUMBER CHANGES AND/OR DESIGN CHANGES AFFECTING ITEM INTERCHANGEABILITY REQUIRE PRIOR TYCO APPROVAL AND AUTHORIZATION BY REVISION TO THIS DRAWING.

2. ITEMS PROVIDED TO THIS SPECIFICATION TO BE PERMANENTLY IDENTIFIED PER THE FOLLOWING IDENTIFIER:

YEAR WEEK

TYCO PART NUMBER

DATE CODE (e.g. 0212)

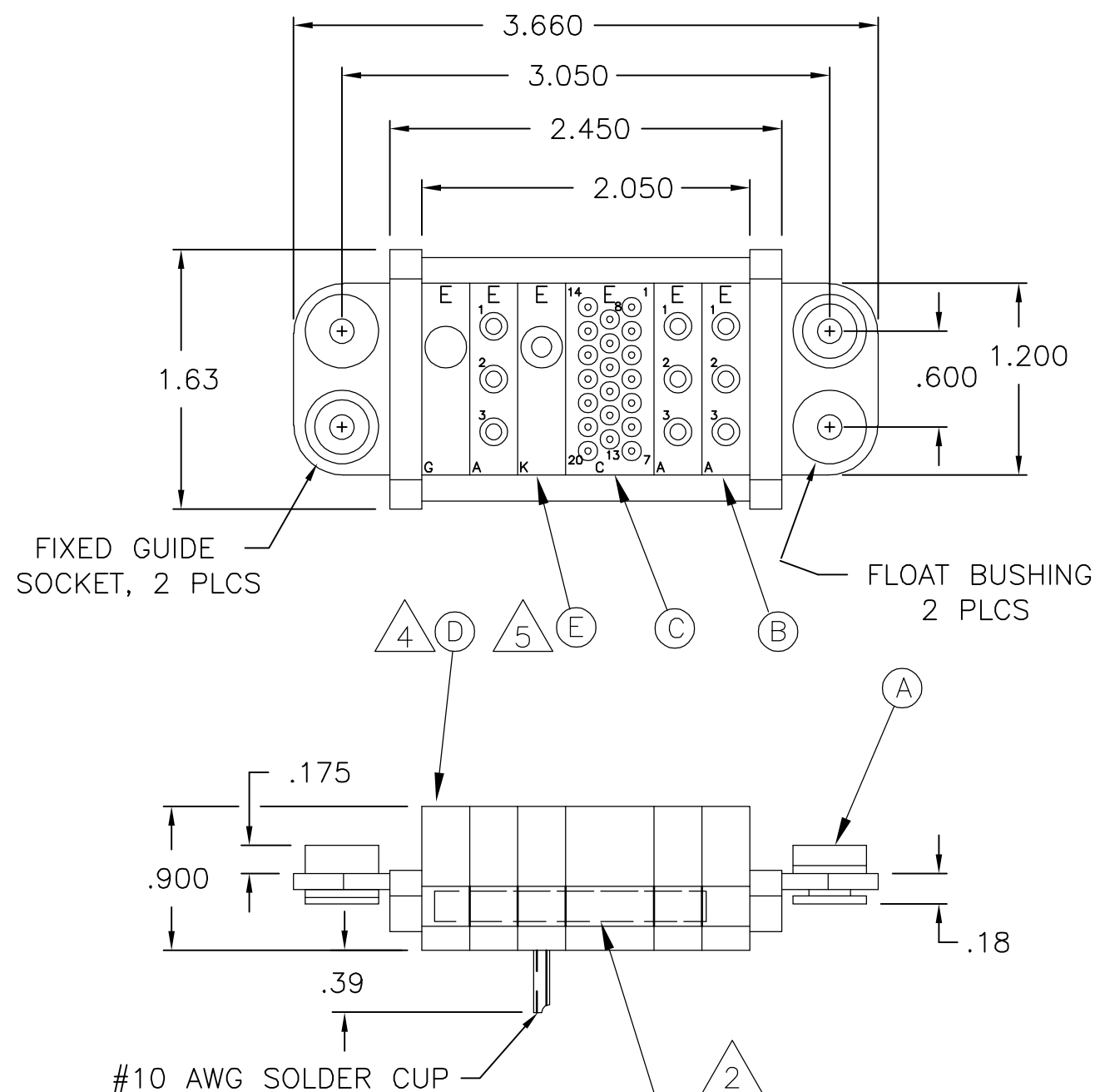
XXXXXXXX-X

XXXX

3. MODULES NOTED ARE CRIMP REMOVABLE STYLE. THIS ASSEMBLY DOES NOT INCLUDE SOCKET CONTACTS. PROPER CONTACT ORDERING AND SELECTION SHALL BE THE RESPONSIBILITY OF THE CUSTOMER. THE FOLLOWING PART NUMBERS AND DESCRIPTIONS ARE SHOWN FOR REFERENCE ONLY.
- SIZE #12 SOCKET CONTACTS: PN 6648318-1  
SIZE #20 SOCKET CONTACTS: PN 1648325-1

4. MODULE G NOTED ARE BLANK AND ARE USED AS SPACERS ONLY.

5. MODULE K SOCKET CONTACT INSTALLED.



1	6648475-1	MODULE K	E
1	1648473-1	MODULE G	D
1	1648468-1	MODULE C	C
3	1648466-1	MODULE A	B
2	6648252-1	END CAP, GUIDE SOCKET, FLOAT	A
-1	PART NUMBER	DESCRIPTION	ITEM

THIS DRAWING IS A CONTROLLED DOCUMENT.

DWN R.GRZYBOWSKI

26FEB2007

CHK D.ORRIS

26FEB07

APVD S.FLICKINGER

26FEB07

PRODUCT SPEC

APPLICATION SPEC

WEIGHT -

CUSTOMER DRAWING

**tyco**  
**Electronics**Tyco Electronics Corporation  
Harrisburg, PA 17105-3608

NAME

SOCKET CONNECTOR

DOMINO

W/ PANEL CUT-OUT

SIZE

CAGE CODE

DRAWING NO

RESTRICTED TO

A3

00779

C-6643980

SCALE

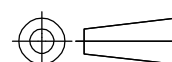
1:1

SHEET

1 OF 2

REV

A

DIMENSIONS:  
INCHESTOLERANCES UNLESS  
OTHERWISE SPECIFIED:

0 PLC

± -

1 PLC

± -

2 PLC

± .02

3 PLC

± .010

4 PLC

± -

ANGLES

± -

FINISH

-

MATERIAL

-

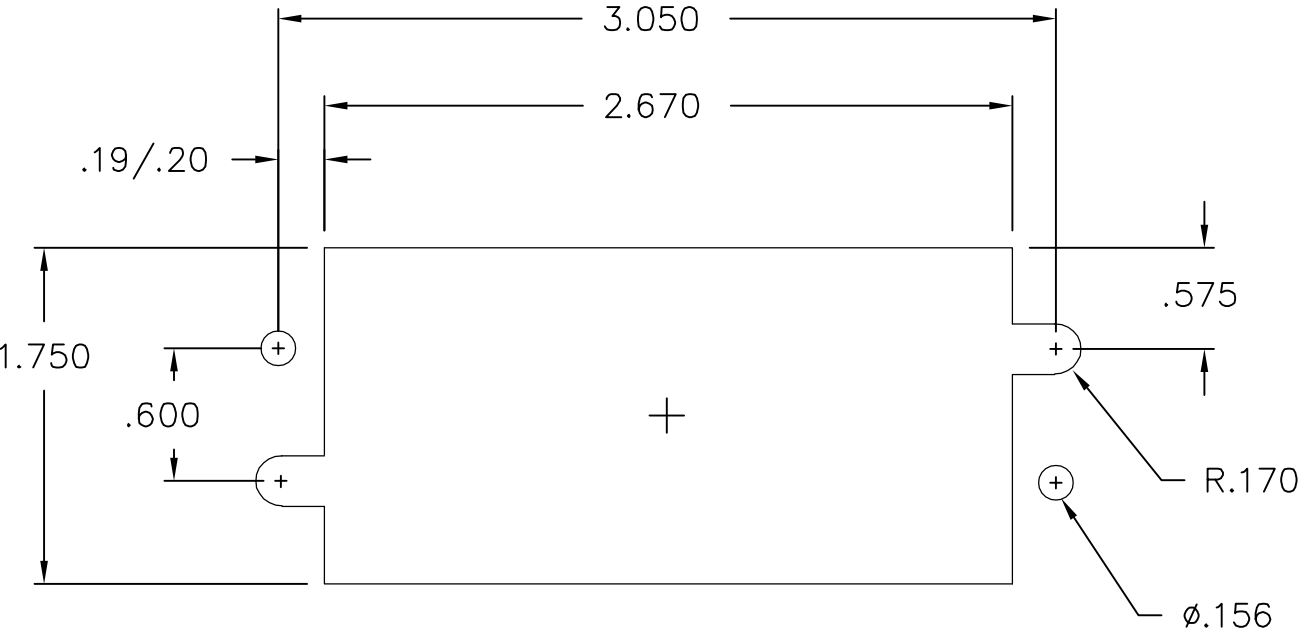
4

3

2

1

LOC	DIST	REVISIONS				
GP	00	P	LTR	DESCRIPTION	DATE	APVD
			—	SEE SHEET 1	—	—



THIS DRAWING IS A CONTROLLED DOCUMENT.		DWN R.GRZYBOWSKI 26FEB2007		<b>tyco</b> <b>Electronics</b>		Tyco Electronics Corporation Harrisburg, PA 17105-3608							
DIMENSIONS: INCHES		TOLERANCES UNLESS OTHERWISE SPECIFIED:		CHK D.ORRIS 26FEB07		APVD S.FLICKINGER 26FEB07		NAME					
		0 PLC ± -		PRODUCT SPEC		SOCKET CONNECTOR DOMINO W/ PANEL CUT-OUT							
		1 PLC ± -		—									
		2 PLC ± .02		APPLICATION SPEC									
		3 PLC ± .010		—									
		4 PLC ± -		—									
ANGLES ± -		—		WEIGHT —		SIZE A3		CAGE CODE 00779		DRAWING NO C=6643980		RESTRICTED TO —	
MATERIAL —		FINISH —		CUSTOMER DRAWING		SCALE 1:1		SHEET 2 OF 2		REV A			

# Mouser Electronics

Authorized Distributor

Click to View Pricing, Inventory, Delivery & Lifecycle Information:

[TE Connectivity:](#)

[6643980-1](#)