

1

2

3

4

5

6

7

A

SPECIFICATION MATERIAL Features

Order Code

AGP - XX - G - X
1 2

This shell hood in poly-carbonate is supplied for top cable entry.

1 No. of contacts
09, 15, 25, 37, 50

Following versions are available:

2 Version

ME -Metalized
NEW -Plastic,black
NEW/GR -Plastic,Grey

metallized,black and grey

The strain relief with two screws is attached separately.

Suitable knurled screws

AGP-RS/NEW
1 Set=2 pieces

Material

Insulator: ABS UL94HB
Screw: Steel

Finish: Chromate plated

Delivery includes

- 2 half-sheels
- 2 fixing screws
- 4 screws
- 2 strain relief bow
- 2 nuts

ROHS compliant

Unit: mm

Scale	Free	⑥ Update the drawing	29.07.2015	Amy		Date	Name	Customer-No.
TOLERANCE		⑤ Corrected material	14.12.10	Dean	Drawn	12.01.2005	Ken	ASSMANN WSW-No.
X.X	±X	④ Drawing revised	06.07.07	N.Schulz	Approved	29.07.2015	Amy	AGP XX G-X
X.XX	±X	③ Value E completed	03.08.05	Walter				Drawing-No.
X.XXX	±X	② Material completed	12.05.05	Walter				ASS 0557 CO
DIM	TOL	① Drawn	12.01.2005	Ken				Replace
X. °	±X°							Sheet
X.X°	±X°							1 / 6
Angle	TOL	Id.						

1

2

3

4

5

6

7

H

H

G

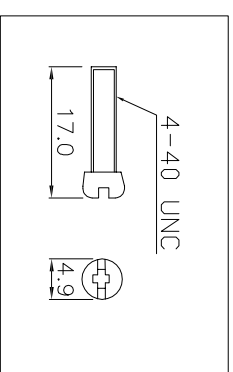
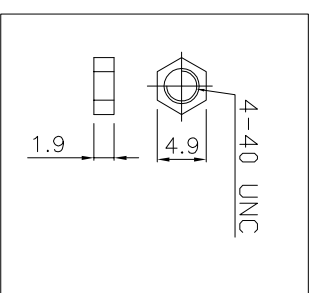
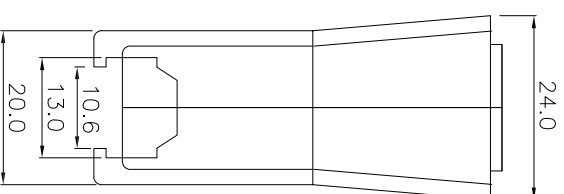
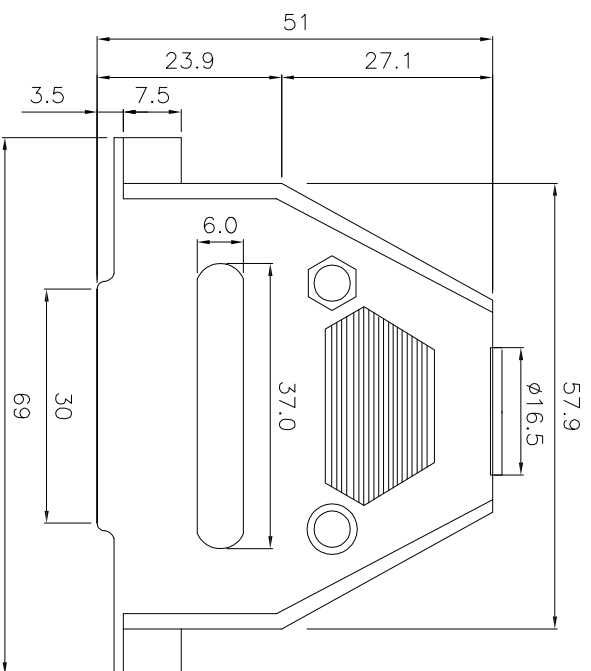
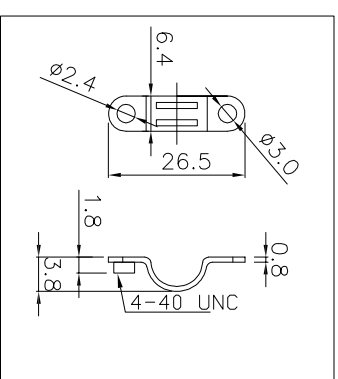
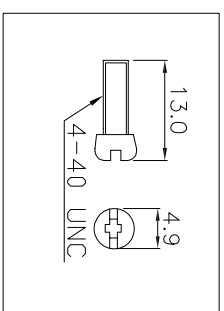
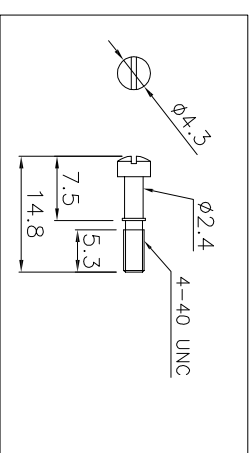
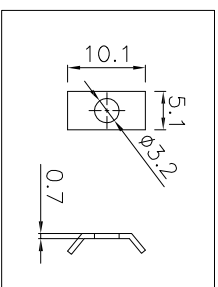
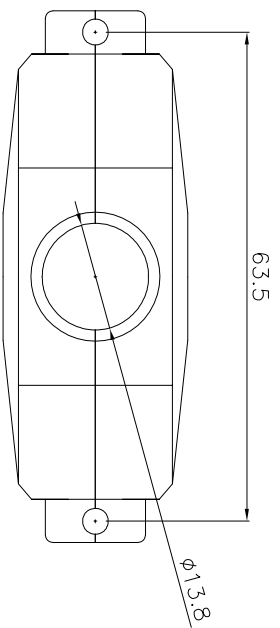
E

D

C

B

A

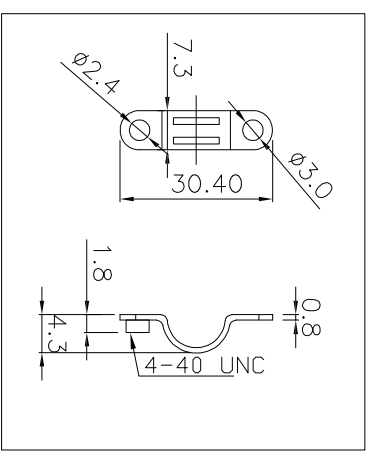
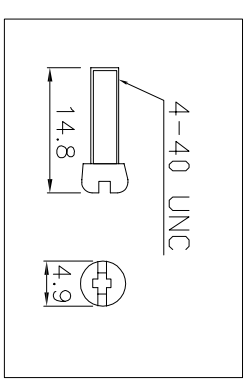
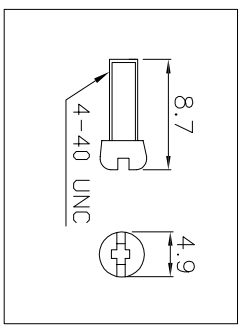
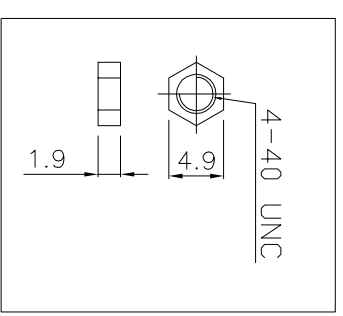
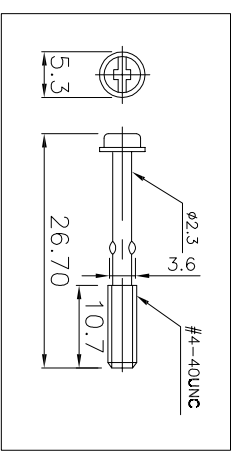
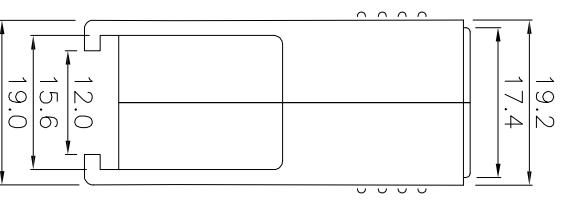
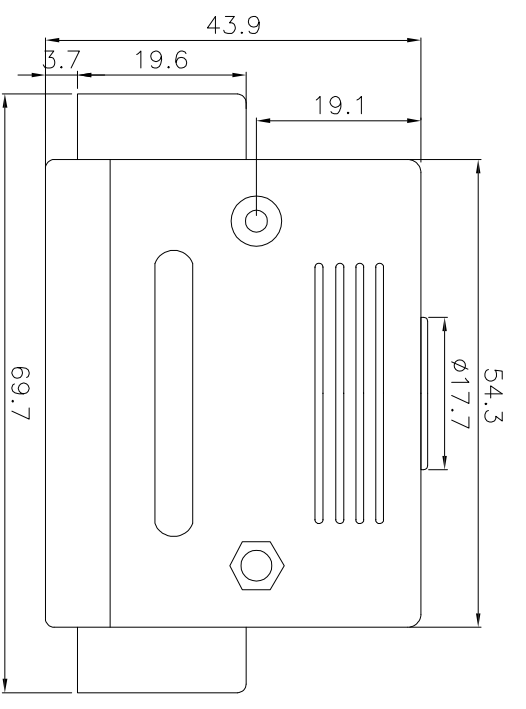
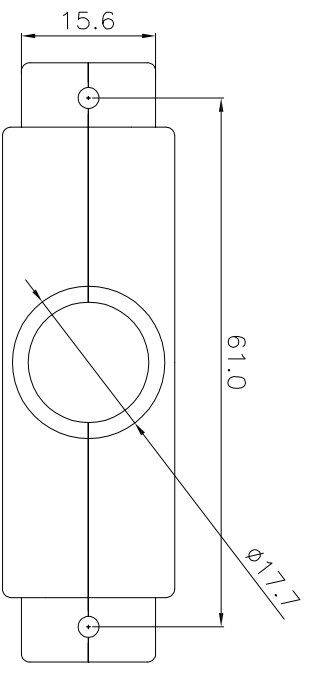


ROHS compliant
Unit: mm

Scale	Free	⑥ Update the drawing	29.07.2015	Amy	Date	Name
TOLERANCE		⑤ Corrected material	14.12.10	Dean	12.01.2005	Ken
X.X	±0.30	④ Drawing revised	06.07.07	N.Schulz	29.07.2015	Amy
X.XX	±0.20	③ Value E completed	03.08.05	Walter		
DIM	TOL	② Material completed	12.05.05	Walter		
		① Drawn	12.01.2005	Ken		
Angle	±5°					
Angle						
Angle						
Angle						

Customer-No.	ASSMANN WSW-No.	AGP 37 G-X
Drawing-No.		
ASS 0557 CO		rev06
Replace		Sheet 5 / 6

1	2	3	4	5	6	7
1	2	3	4	5	6	7
H	G	F	E	D	C	B
H	G	F	E	D	C	B
SV3931						



ROHS compliant
Unit: mm

Scale	Free	⑥ Update the drawing	29.07.2015	Amy	Date	Name
TOLERANCE		⑤ Corrected material	14.12.10	Dean	12.01.2005	Ken
X.X	±0.30	④ Drawing revised	06.07.07	N.Schulz	29.07.2015	Amy
X.XX	±0.20	③ Value E completed	03.08.05	Walter		
DIM	TOL	② Material completed	12.05.05	Walter		
Angle	±5°	① Drawn	12.01.2005	Ken		
Angle		Id.				
Angle		Modification				

ASSMANN
components

ASSMANN WSW-No. AGP 50 G-X

Drawing-No. ASS 0557 CO

rev06

Replace

Sheet 5 / 6