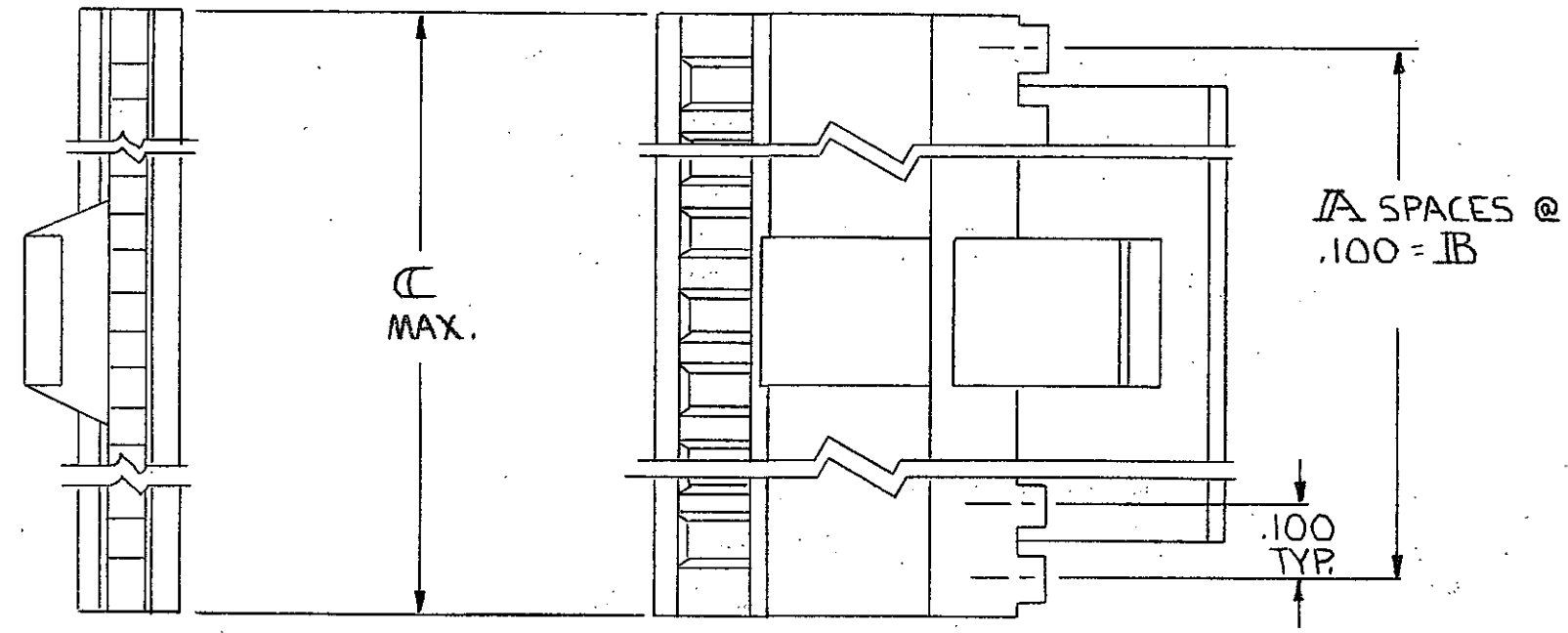
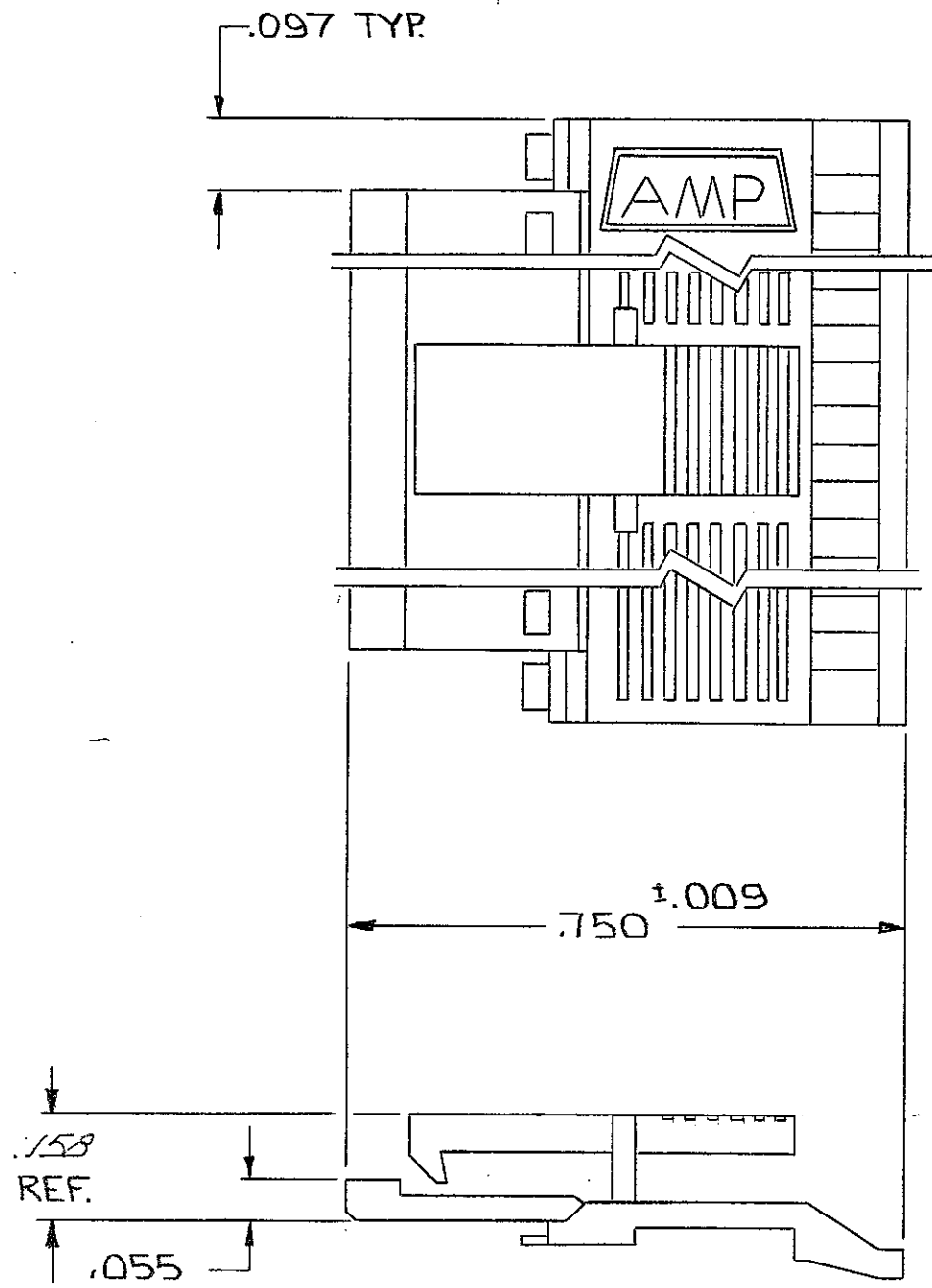


| REVISIONS | | | | | | | |
|-----------|---|------|-----|---------------------------|-----------|-----|------|
| P | F | ZONE | LTR | DESCRIPTION | DATE | DWN | APVD |
| 0 | | | F | REVISED PER ECO-15-008006 | 17NOV2015 | NK | MM |



| | | | | | |
|-------|-------|----|-------------|-------------|----|
| 3.600 | 3.500 | 35 | 72 | 3-102681-1 | 1 |
| 3.500 | 3.400 | 34 | 70 | 3-102681-2 | 0 |
| 3.400 | 3.300 | 33 | 68 | 2-102681-3 | -9 |
| 3.300 | 3.200 | 32 | 66 | 2-102681-4 | -8 |
| 3.200 | 3.100 | 31 | 64 | 2-102681-5 | -7 |
| 3.100 | 3.000 | 30 | 62 | 2-102681-6 | -6 |
| 3.000 | 2.900 | 29 | 60 | 2-102681-7 | -5 |
| 2.900 | 2.800 | 28 | 58 | 2-102681-8 | -4 |
| 2.800 | 2.700 | 27 | 56 | 2-102681-9 | -3 |
| 2.700 | 2.600 | 26 | 54 | 2-102681-10 | -2 |
| 2.600 | 2.500 | 25 | 52 | 2-102681-11 | -1 |
| 2.500 | 2.400 | 24 | 50 | 2-102681-12 | 0 |
| 2.400 | 2.300 | 23 | 48 | 1-102681-13 | -9 |
| 2.300 | 2.200 | 22 | 46 | 1-102681-14 | -8 |
| 2.200 | 2.100 | 21 | 44 | 1-102681-15 | -7 |
| 2.100 | 2.000 | 20 | 42 | 1-102681-16 | -6 |
| 2.000 | 1.900 | 19 | 40 | 1-102681-17 | -5 |
| 1.900 | 1.800 | 18 | 38 | 1-102681-18 | -4 |
| 1.800 | 1.700 | 17 | 36 | 1-102681-19 | -3 |
| 1.700 | 1.600 | 16 | 34 | 1-102681-20 | -2 |
| 1.600 | 1.500 | 15 | 32 | 1-102681-21 | -1 |
| 1.500 | 1.400 | 14 | 30 | 1-102681-22 | 0 |
| 1.400 | 1.300 | 13 | 28 | 1-102681-23 | -9 |
| 1.300 | 1.200 | 12 | 26 | 1-102681-24 | -8 |
| 1.200 | 1.100 | 11 | 24 | 1-102681-25 | -7 |
| 1.100 | 1.000 | 10 | 22 | 1-102681-26 | -6 |
| 1.000 | .900 | 9 | 20 | 1-102681-27 | -5 |
| .900 | .800 | 8 | 18 | 1-102681-28 | -4 |
| .800 | .700 | 7 | 16 | 1-102681-29 | -3 |
| .700 | .600 | 6 | 14 | 1-102681-30 | -2 |
| .600 | .500 | 5 | 12 | 102681-1 | -1 |
| C | B | A | NO. OF POS. | PART NO | |

- 1. NO. OF POS. PERTAINS TO HOUSING SIZE.
- 2. THIS COVER TO BE USED WITH 102536.
- △ OBSOLETE PART NUMBER

| | | | | |
|--|---|-----------------|---------------|---|
| UNLESS OTHERWISE SPECIFIED DIMENSIONS ARE IN INCHES. TOLERANCES ON: DECIMALS ±.005 ANGLES ± | CONTRACT NO | TE Connectivity | | |
| | DR <i>D. Johnson</i> 10-31-80 CHK <i>P. J. Ruppberg</i> 11-2-80 ARPD <i>W. A. Berry</i> 11-4-80 APPD <i>Lucas</i> 4 Nov 80 | | | NAME COVER-HALF, LATCH, MASS TERMINATION, AMPMODU, .100 €, FULL BAR POLARIZATION |
| MATERIAL FLAME RETARDANT THERMOPLASTIC COLOR= BLACK | DSGN APPD | SIZE | CODE IDENT NO | DRAWING NO |
| FINISH | OTHER APPD | C | 00779 | 102681 |
| | | SCALE | SHEET 1 OF 1 | |

Mouser Electronics

Authorized Distributor

Click to View Pricing, Inventory, Delivery & Lifecycle Information:

[TE Connectivity:](#)

[102681-8](#)