

SYMBOL DEFINITION		MISSING NUMBERS	
A DIMENSION WITHOUT AN INSPECTION REPORT SYMBOL  DOES NOT REQUIRE INSPECTION. IT MAY BE CONTROLLED ON AN INDIVIDUAL COMPONENT DRAWING.	TOTAL NO. OF SYMBOLS ON DRAWING	48	
	LAST NO. USED	138	

DWG STATUS		ZONE		REVISION HISTORY		AUTH	DR	APVD	APVD
DATE	STG	REV	W/P	CHKD					
17AP03	R	F2	-	-					

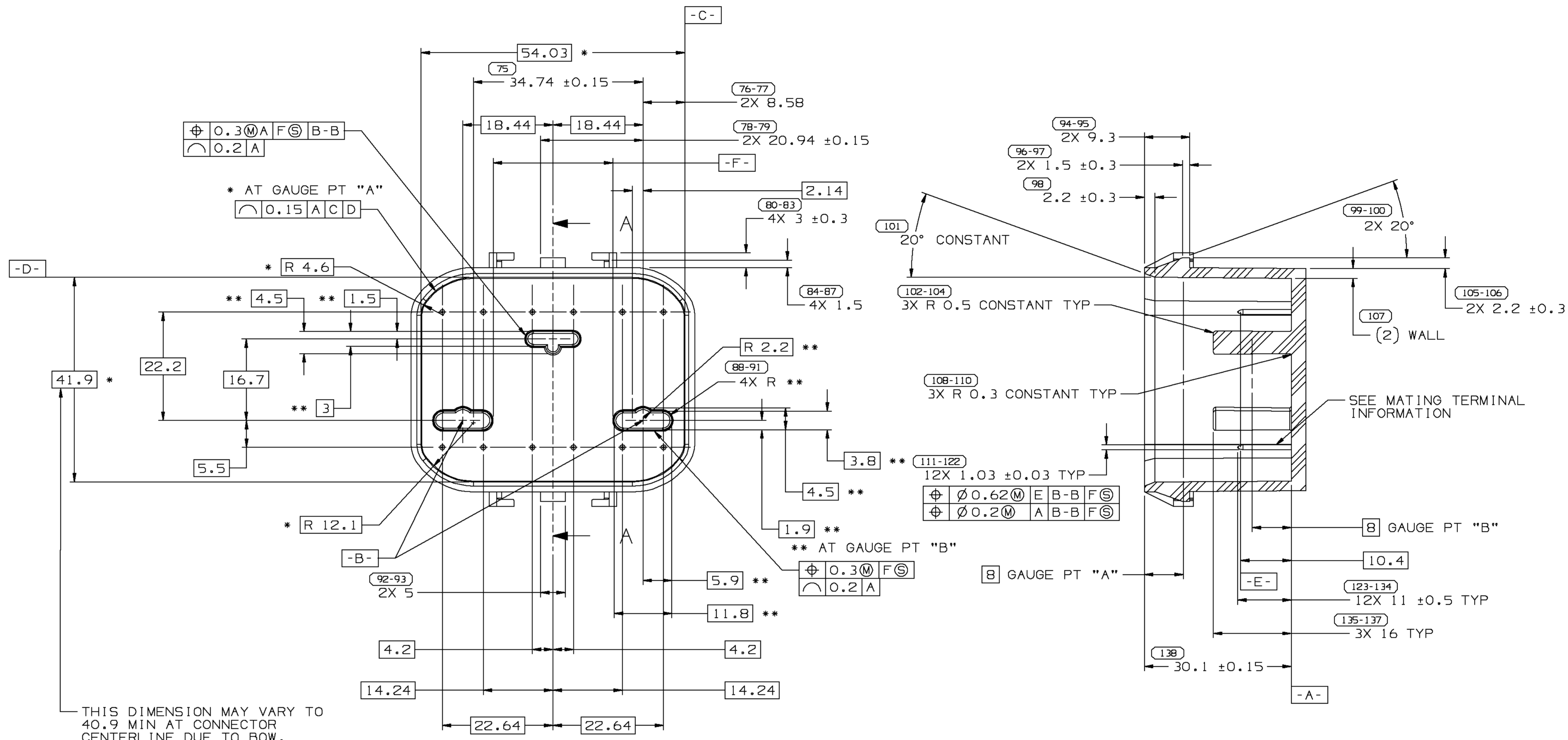
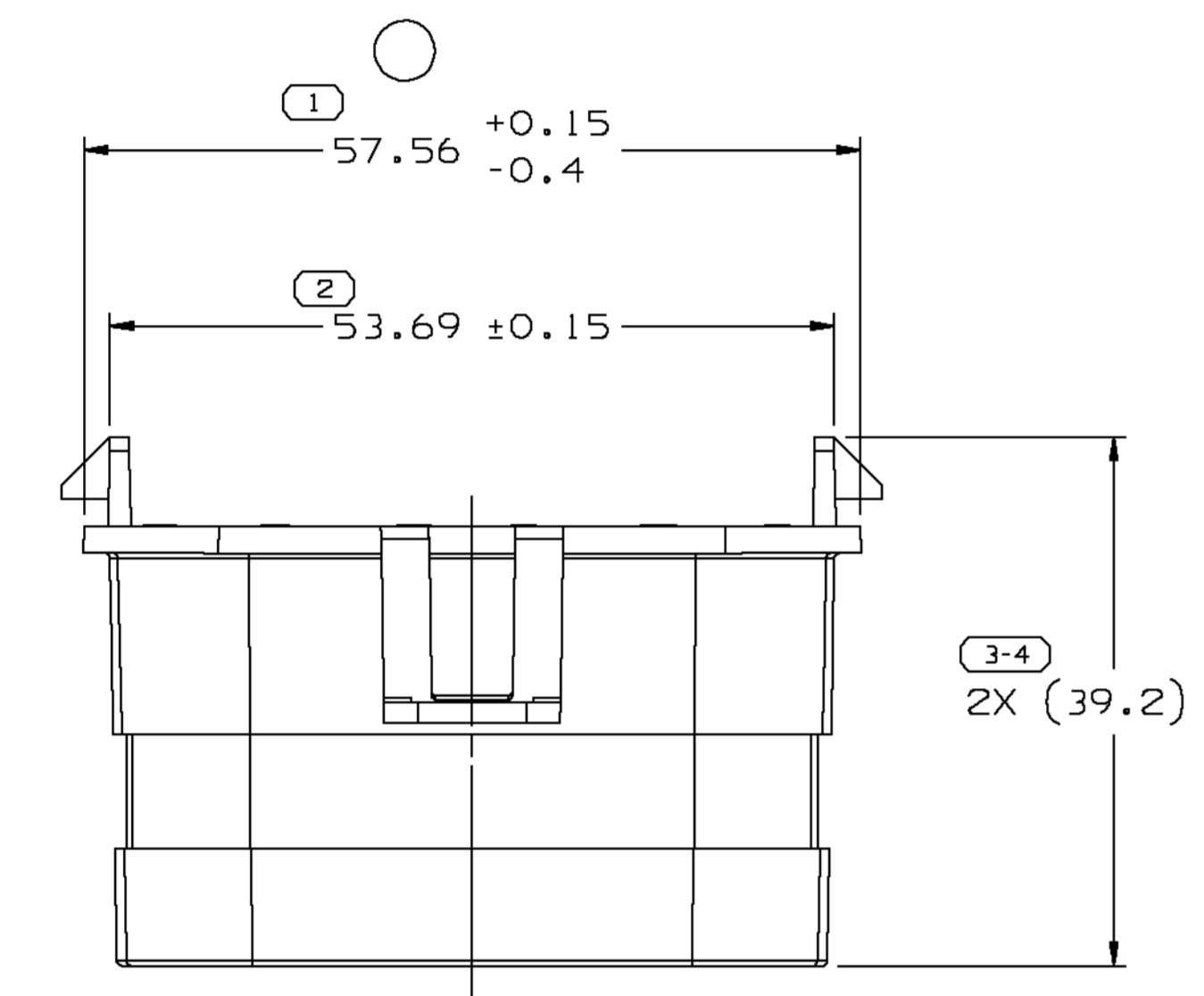
- NOTES
- MUST BE FREE OF CRACKS AND TOOL MARKS THAT EXPOSE BASE MATERIAL FOR DISTANCE SHOWN WITH \*.
  - MATING TERMINAL - PACKARD ELECTRIC MICROPACK 100 (3MM) SERIES.

**MATERIAL SPECIFICATIONS**

RECOMMENDED  
 BASE METAL - CDA-260 BRASS - 1/2 HARD  
 PLATING - UNDERPLATING - COPPER PER MIL-C- 14550 0.003MM (100 MICROINCH) MIN THICK OVERALL OR NICKEL PER QQ-N-290 0.0013MM (50 MICROINCH) MIN THICK OVERALL.  
 SURFACE PLATING - BRIGHT TIN PER MIL-T-10727 0.003MM (100 MICROINCH) MIN THICK OVERALL.

MINIMUMS  
 USE OF MATERIAL WITH ELECTRICAL CONDUCTIVITY < 20% IACS MUST BE APPROVED BY PACKARD ELECTRIC MATERIALS ENGINEERING.

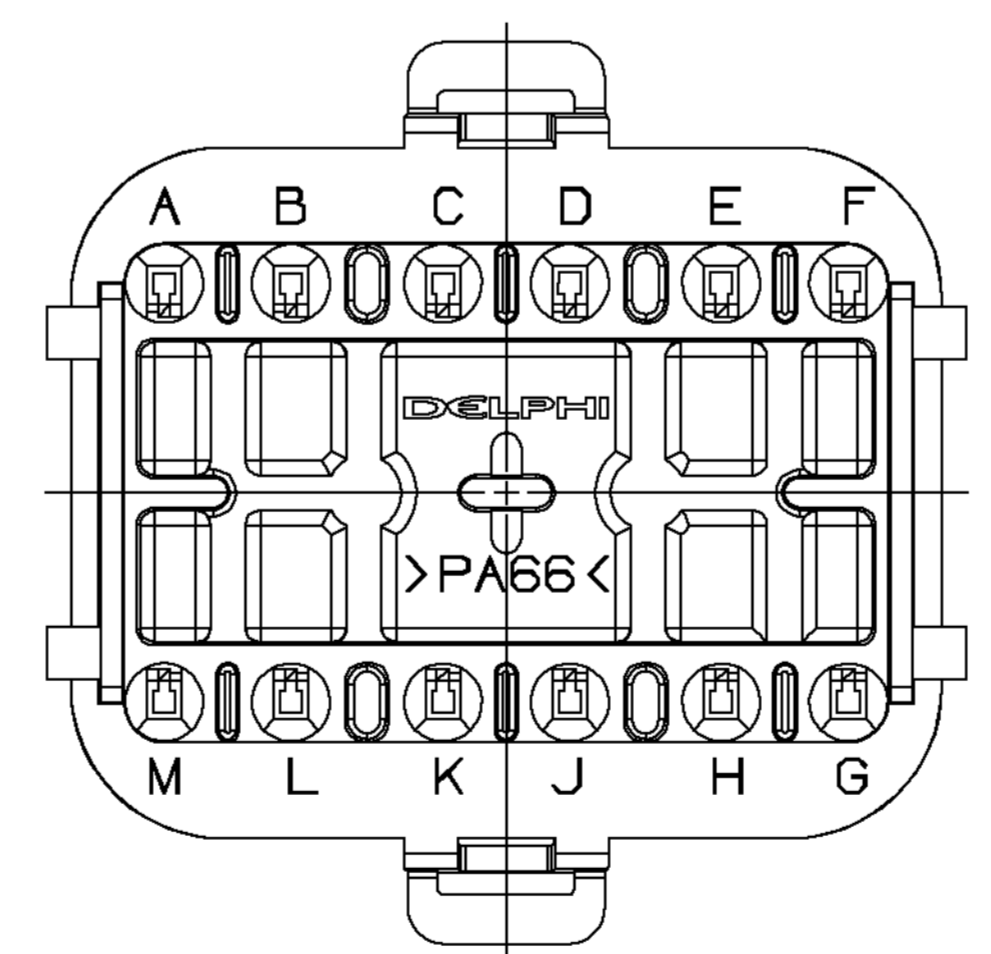
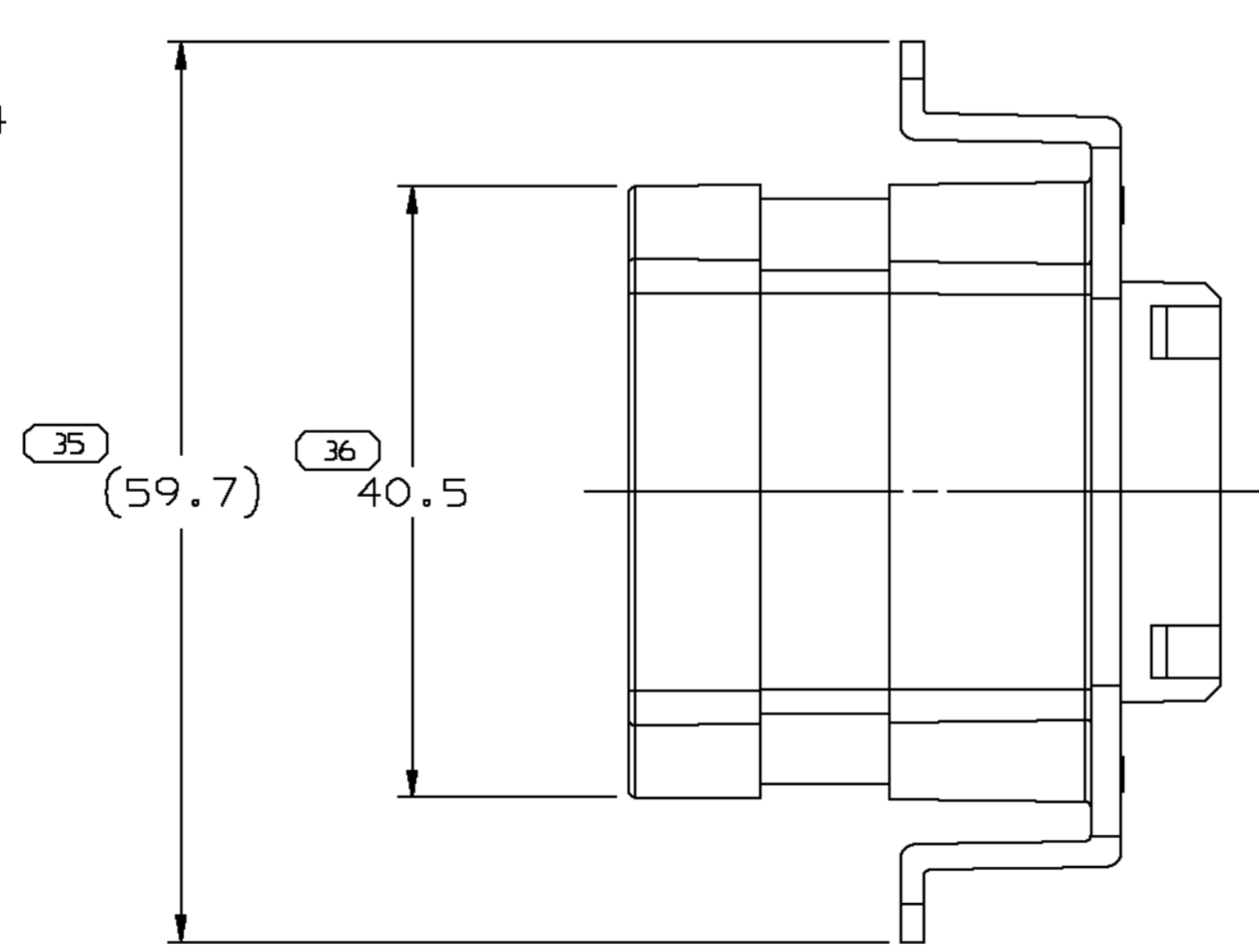
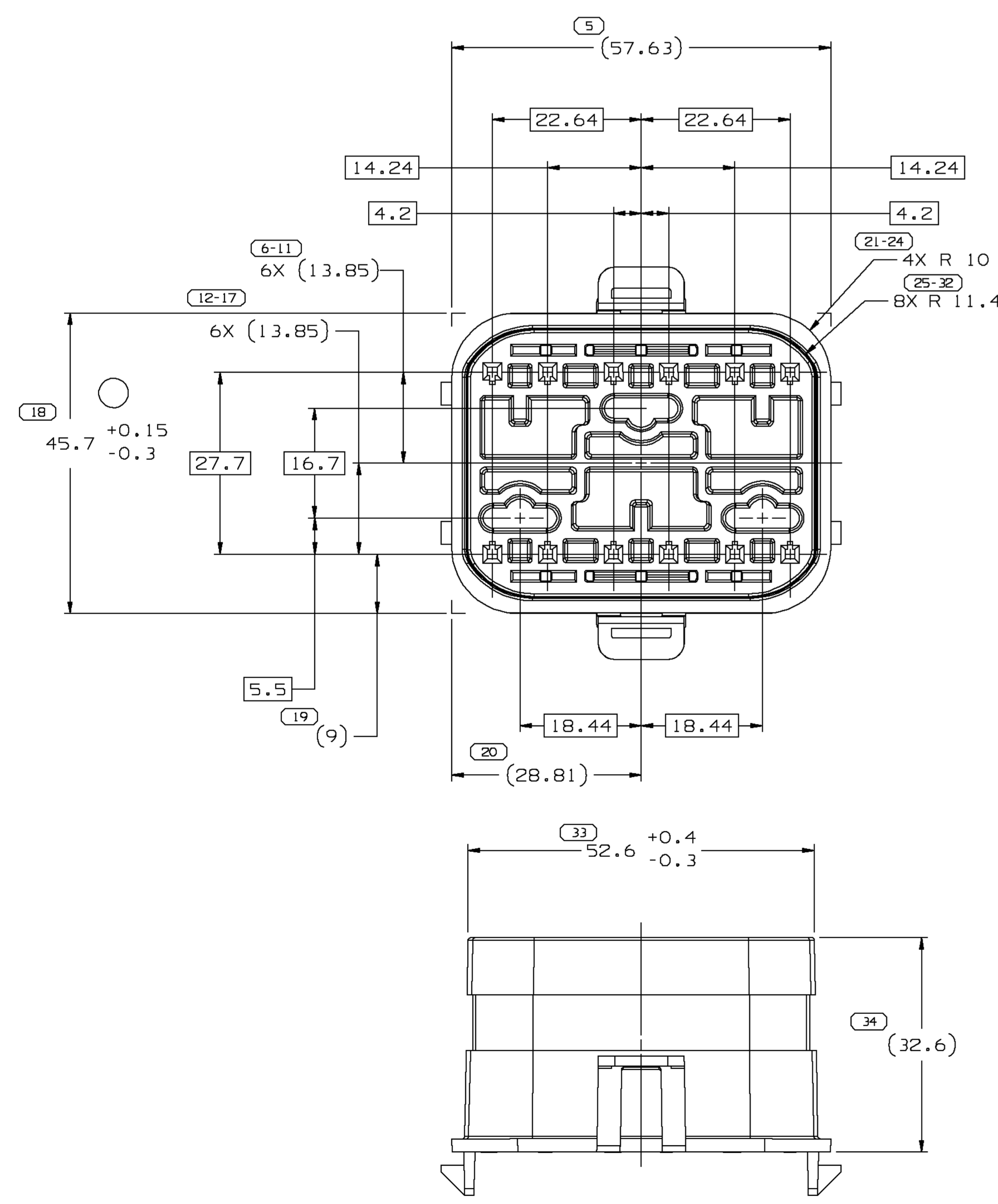
**MATING TERMINAL INFORMATION**



- NOTES
- RECOMMENDED MATERIAL: PA66
  - WHEN USING THIS INFORMATION FOR A NEW DESIGN, REQUEST THE LATEST COPY OF THIS DRAWING FROM PACKARD ELECTRIC DIVISION.

**MATING PART INFORMATION**

INSPECTION SYMBOLS SHOWN IN THESE VIEWS ARE FOR REFERENCE ONLY.



- NOTES
- UNLESS OTHERWISE SPECIFIED AND/OR INDICATED: DIMENSIONS ARE TO FACE OF VIEW SHOWN AND AUTOMATICALLY ROUNDED BY COMPUTER FOR INSPECTION. (SEE MATH MODEL FOR PRECISE DIMENSIONS.) FOR ALL OTHER DIMENSIONS NOT SHOWN BUT REQUIRED FOR TOOL BUILD, SEE MATH MODEL FOR PRECISE TOOL PATH DATA.
  - MATING COMPONENTS OR EQUIVALENT:  
 DELPHI E & EM SCPI FUEL METER BODY 17091628  
 TERMINAL 12048327  
 SECONDARY TERMINAL LOCK TWO 12177076 TPA'S  
 CONNECTOR SEAL  
 LOWER CONNECTOR SEAL 12160684  
 UPPER CONNECTOR SEAL 12177085  
 CABLE SEAL 12089678  
 CONNECTOR POSITION ASSURANCE LOCK 12160693  
 WIRE DRESS 12177084
  - THIS PART IS NOT CONTROLLED FOR AUTOMATIC FEEDING.
  - (2.3)X(0.1) RAISED DELPHI CORPORATE BRAND TO BE LOCATED ON ANY EXTERIOR SURFACE, PREFERABLY VISIBLE AT FINAL ASSEMBLY. OPTIONAL CONSTRUCTION TO BE "PED" OR NO LOGO.
  - MATERIAL RECYCLING CODE >PA66< PER SAE J1344. (2.3)X(0.1) RAISED CHARACTERS AS SHOWN TO BE LOCATED ON ANY EXTERIOR SURFACE. OPTIONAL CONSTRUCTION TO BE NO MATERIAL RECYCLING CODE.

FROM	TO	DIMENSIONAL RANGE (MM)	TOLERANCE UNLESS OTHERWISE SPECIFIED	CHART ET				
> 0	> 30	> 70	> 100	> 150	> 200	> 250	> 300	
± 0.15	± 0.2	± 0.3	± 0.4	± 0.5	± 0.6	± 0.8	± 1	± 1.2

DWG TYPE		PART DRAWING	
STYLE		DISTR CODE	D
VOLUME (COP)	33, 354	ROUTING	6900
UNLESS OTHERWISE SPECIFIED			
THIS DOCUMENT IS IN ACCORDANCE WITH ASME Y14.5M-1994 AS AMENDED BY THE 2003 DIMENSIONING AND TOLERANCING ADDENDUM - 1997. ALL DIMENSIONS ARE TO UNLESS OTHERWISE SPECIFIED.			
MATERIAL RECYCLING CODE >PA66< PER SAE J1344. (2.3)X(0.1) RAISED CHARACTERS AS SHOWN TO BE LOCATED ON ANY EXTERIOR SURFACE. OPTIONAL CONSTRUCTION TO BE NO MATERIAL RECYCLING CODE.			
REFERENCE		001, 701	
THIRD ANGLE PROJECTION		DO NOT SCALE	
USE MATH DATA		UNIGRAPHICS	

**DELPHI**  
 DELPHI PACKARD ELECTRIC SYSTEMS  
 WARREN, OH

OR	DATE
APVD1 A. LASES	28AP95
APVD2 MANUEL VEGA	02MY95
APVD3	
APVD4	
APVD5	

MATERIAL M3592001 - PA66 HS 1M BLK

DRAWING NAME  
 CONN 12F MIC/P 100

DRAWING NUMBER  
 12177083

SHEET NO 1 OF 1

# Mouser Electronics

Authorized Distributor

Click to View Pricing, Inventory, Delivery & Lifecycle Information:

[Aptiv:](#)

[12177083](#)