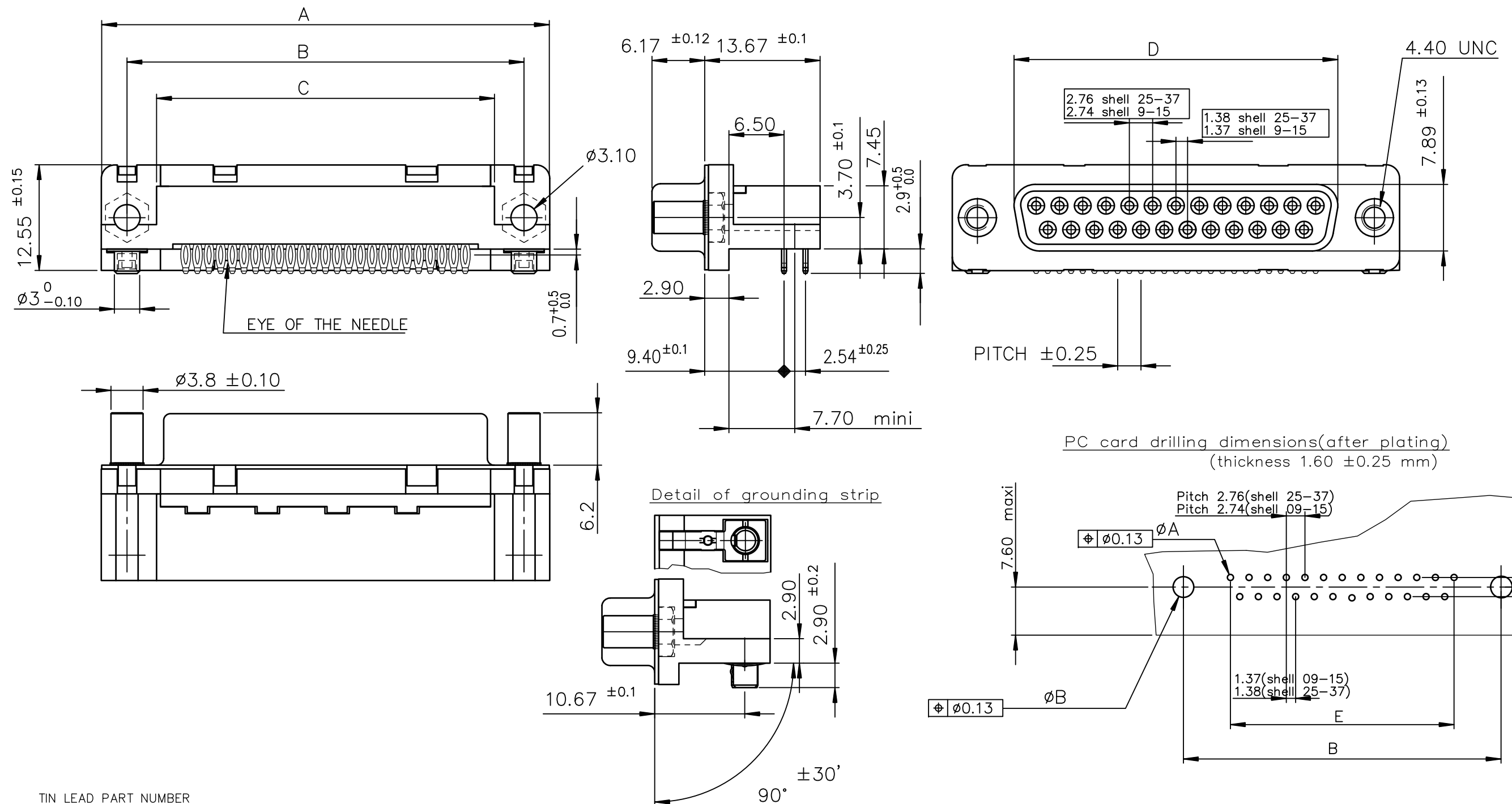


view shown without grounding and plastic pin



TIN LEAD PART NUMBER

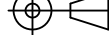


[illegible]

LEAD FREE PART NUMBER

[illegible]

GENERAL CHARACTERISTICS AND ROHS INFORMATIONS:

SEE DRAWING C01-8646-0001

mat'l. code —				surface ISO 1302 ✓		tolerance ISO 406 ISO 1101		projection 		product family D—SUB														
ltr		ecn no		dr	date		tolerances unless otherwise specified						 MM		title DELTA-D FEMALE CONNECTOR EUROSTYLE RIGHT ANGLED PRESS FIT									
H		ELX-I-18050		MP	2014/06/23		angles		linear		.0±.0.1													
							0°±2°				.00±0.1													
							0°±2°		.000±0.1		scale 2:1													
							dr		PESSON		1995/10/17													
							engr		MITHUN PAUL		2014/06/23													
							chr		ALIAS BABU		2014/06/23													
							appd		BIJU K PAUL		2014/06/23													
sheet index		revision sheet		H	1																			

Mouser Electronics

Authorized Distributor

Click to View Pricing, Inventory, Delivery & Lifecycle Information:

[FCI / Amphenol:](#)

[D09S82C4GV00LF](#) [D09S82C6GV00LF](#) [D15S82C6GV00LF](#) [D25S82C6GV00LF](#) [D37S82C6GV00LF](#)
[D09S82C4GV00](#) [D09S82C6GV00](#) [D15S82C6GV00](#) [D25S82C6GV00](#) [D37S82C6GV00](#) [D37S82C4GV00LF](#)