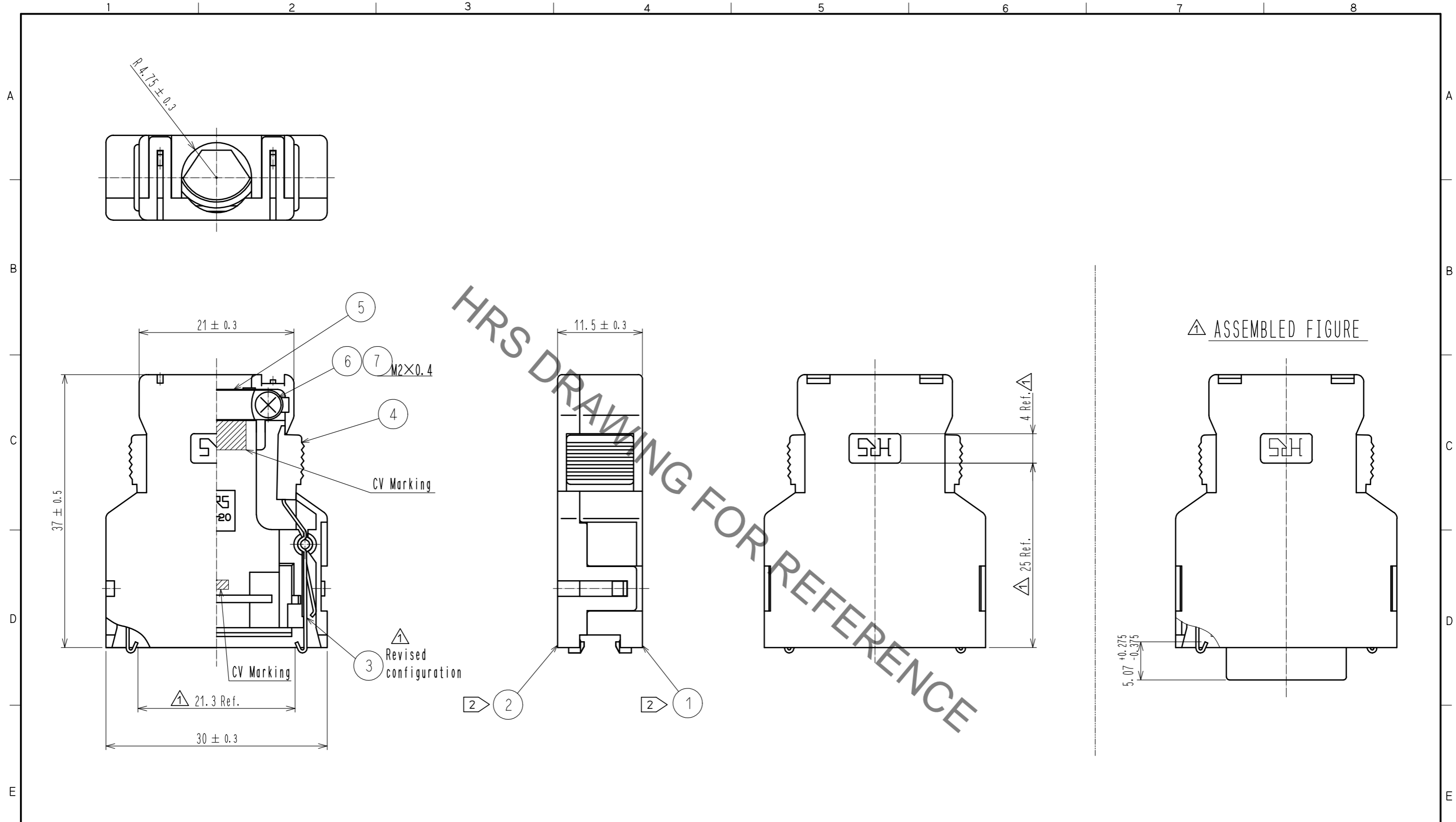


Apr.1.2019 Copyright 2019 HIROSE ELECTRIC CO., LTD. All Rights Reserved.
 In case of consideration for using Automotive equipment / device which demand high reliability, kindly contact our sales window correspondents.



HRS DRAWING FOR REFERENCE

- Note**
1. Outer surface of cover case part no. ① and ② are matte finished equivalent to TH-117 (Tanazawa hakkosha Co., Ltd.). Except around the ditch of HRS mark.
 2. Part no. ③, ④, ⑤, ⑥, ⑦ are assembled into part no. ①. Part no. ① and ② are not assembled when delivered.
 3. Outer diameter of applicable cable shall be $\phi 8.5 \pm 0.5$.

NO.	MATERIAL	FINISH . REMARKS	NO.	MATERIAL	FINISH . REMARKS
4	Polycarbonate	Gray . UL94V-0			
3	Stainless steel		7	Brass	Nickel plating $0.8 \mu\text{m}$ min.
2	Polycarbonate	Gray . UL94V-0	6	Brass	Nickel plating $0.8 \mu\text{m}$ min.
1	Polycarbonate	Gray . UL94V-0	5	Stainless steel	

UNITS	SCALE	COUNT	DESCRIPTION OF REVISIONS	DESIGNED	CHECKED	DATE
mm	2 : 1	6	DIS-E-00001548	P. EKSOURIYA	AH. KODAMA	18. 07. 09

APPROVED : HO. MIWA	05. 10. 17	DRAWING NO.	EDC-040857-60-01
CHECKED : YH. ENAMI	05. 10. 14	PART NO.	FI-20-CV(60)
DESIGNED : TU. TANIGUCHI	05. 10. 14	CODE NO.	CL230-0501-4-60
DRAWN : YK. SATO	05. 09. 07		