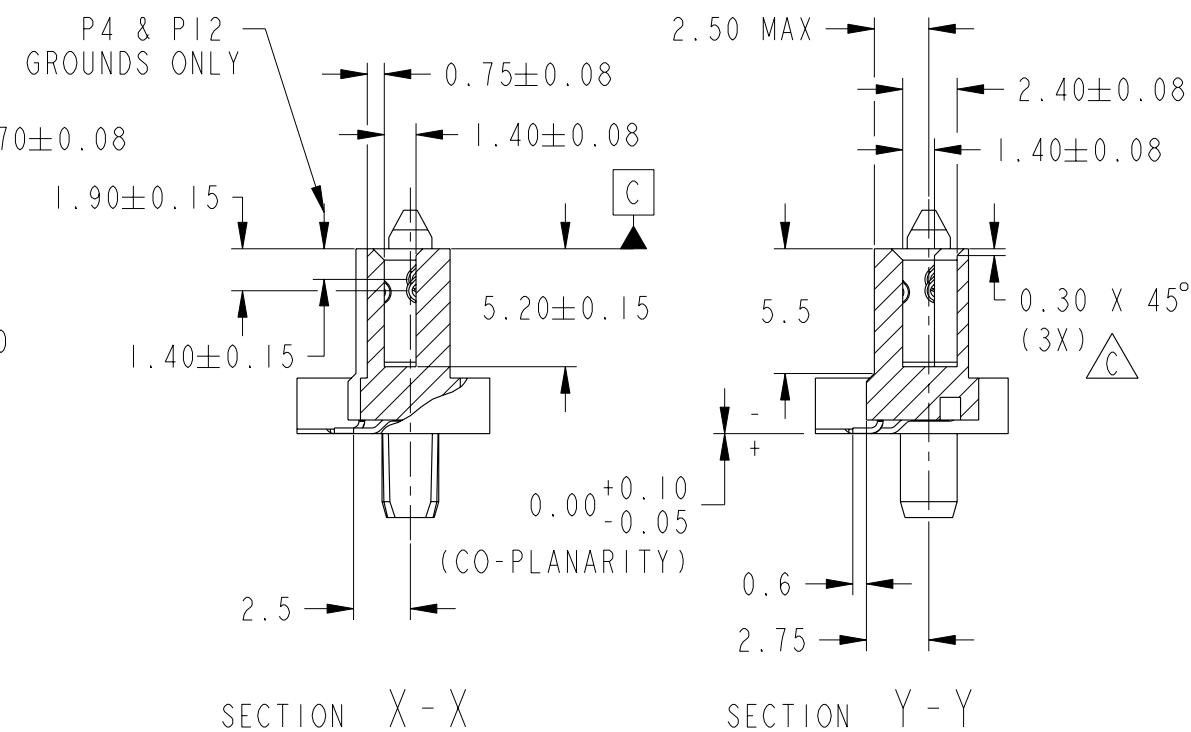
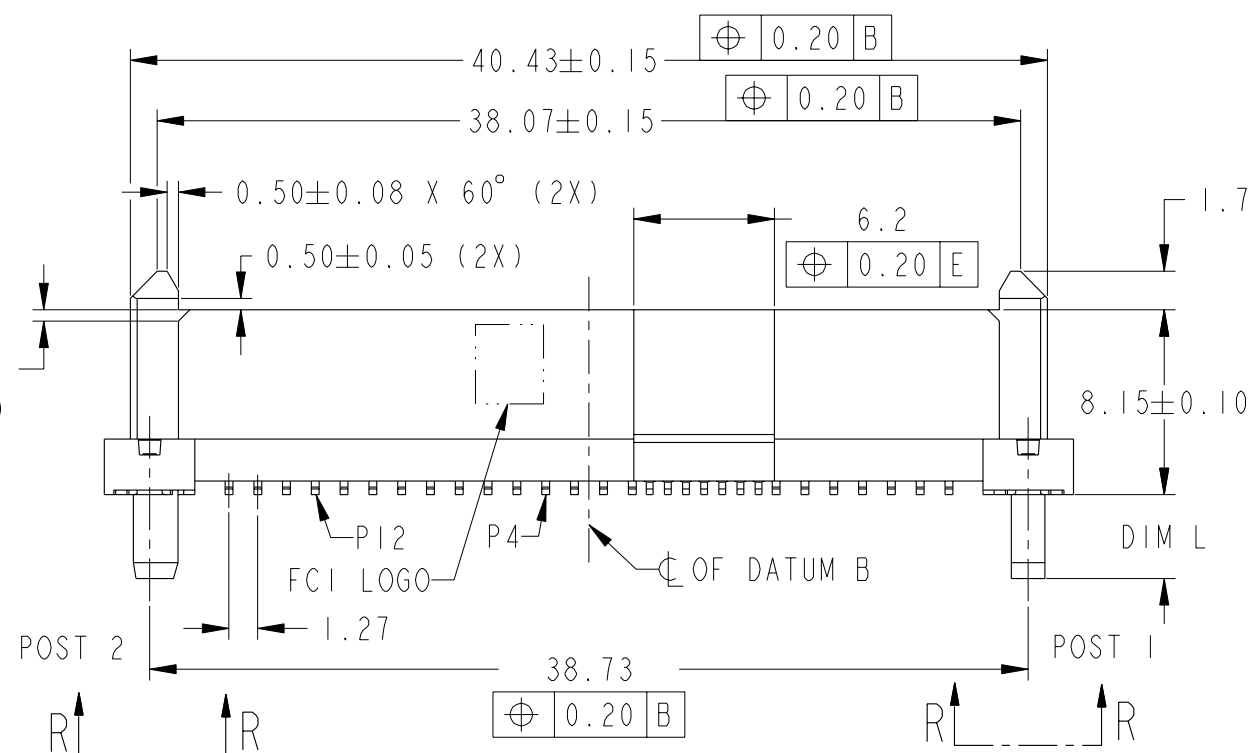
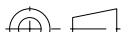
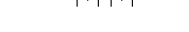


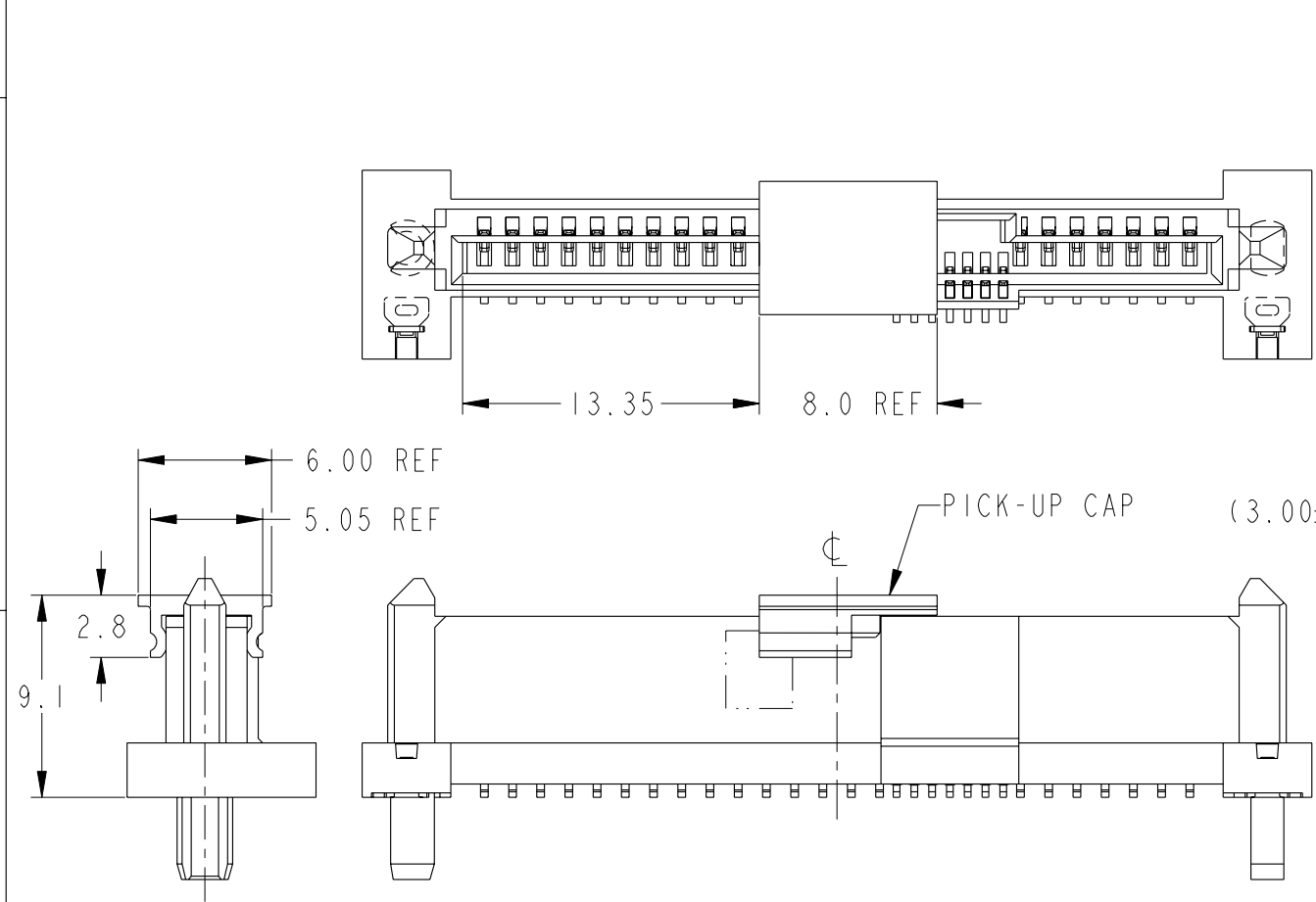


SECTION Z-Z

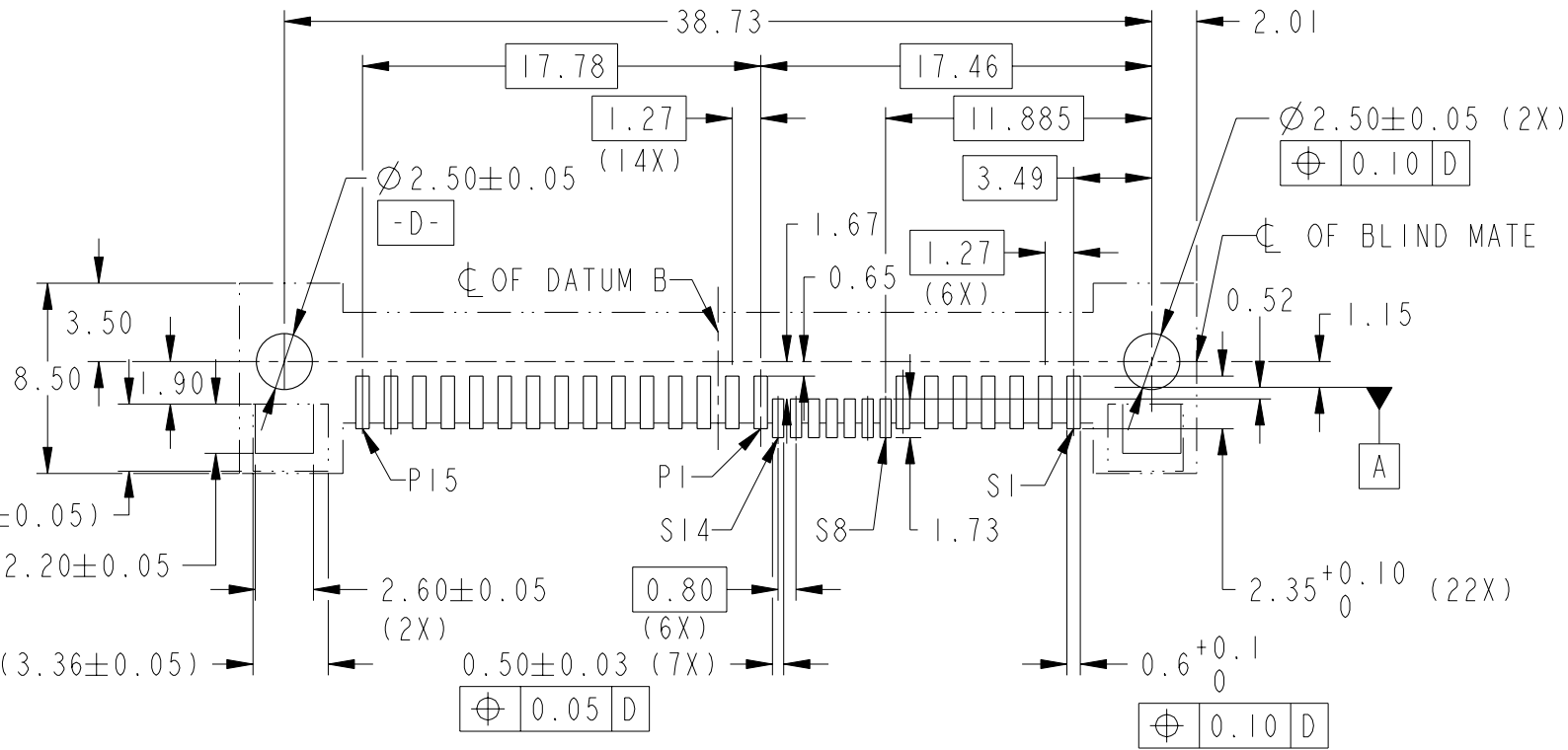


spec ref -				dr	GL L00	2007-02-12	projection			size	A3	scale	3:1
tolerance std ISO 406 ISO 1101	TOLERANCES UNLESS OTHERWISE SPECIFIED			eng	GL L00	2007-02-12				ecn no	S10-0228		
				chr	GL L00	2010-10-28							
				appr	JOEY NG	2010-10-28	product family		SAS	rel level -			
surface  ISO 1302	linear	0.X	±-		title SAS RECEPTACLE WIDE BASE SMT				dwg no	10076579		rev	C
		0.XX	±0.20										
		0.XXX	±-										
					www.fci.com	cat. no.	-	Product - Customer Drw				sheet 1 of 3	

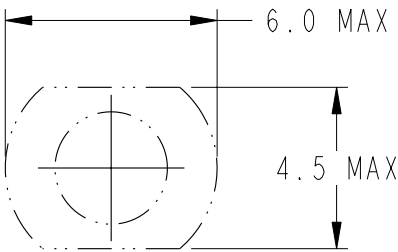
PRODUCT NO	DIM L	RECOMMENDED P.C. BOARD THICKNESS	PICK-UP CAP	PACKAGING	REMARK
10076579-001LF	3.7	4.57mm (0.018")	NO	TRAY	--
10076579-001CLF	3.7		YES		
10076579-001C-TRLF	3.7		YES	TAPE & REEL	
10076579-002LF	2.0	2.54mm (0.100")	NO	TRAY	--
10076579-002CLF	2.0		YES		
10076579-002C-TRLF	2.0		YES	TAPE & REEL	



PART WITH PICK-UP CAP, SEE NOTE ⑤




RECOMMENDED PCB LAYOUT

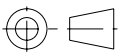





RECOMMENDED SUCTION HEAD SIZE

spec ref		-		dr		GL L00		2007-02-12		projection				MM		size		A3		scale		3:1					
tolerance std		TOLERANCES UNLESS OTHERWISE SPECIFIED				eng		GL L00		2007-02-12						ecn no		S10-0228									
ISO 406						chr		GL L00		2010-10-28																	
ISO 1101						appr		JOEY NG		2010-10-28												product family		SAS		rel level	
surface		linear		0.X		±-				title		SAS RECEPTACLE						dwg no		10076579				rev		C	
				0.XX		±0.20																					
				0.XXX		±-																					
ISO 1302		angular		0°		±2°		www.fci.com		cat. no.		-		Product - Customer Drw						sheet 2 of 3							

NOTES:

1. MATERIAL:
1) HOUSING : HIGH TEMP TERMOPLASTIC, UL 94V-0
COLOUR : BLACK
2) TERMINAL : COPPER ALLOY
3) HOLD DOWN : COPPER ALLOY
2. FINISH :
1) TERMINAL : 30µ" Au PLATING (CONTACT POINT) OVER 50µ" NICKEL
2) SOLDER TAIL : 50µ" MIN Sn OVER 50µ" NICKEL
3) HOLD DOWN : 50µ" MIN Sn OVER 50µ" NICKEL
- ③ THE DIM. IS MEASURED AT P.C. BOARD SITTING PLANE
- ④ PER SFF REV 1.3
- ⑤ PART WITH PICK-UP CAP, P/N XXXXXXXX-XXXC LF
- ⑥ THE STD PACKAGING IS IN TRAY
7. FOR TAPE & REEL PACKAGING, SUFFIX "-TR" ADDED.
P/N XXXXXXXX-XXXC-TR LF
8. THE HOUSING WILL WITHSTAND EXPOSURE TO 260°C PEAK TEMPERATURE
FOR 10 SECONDS IN A CONVECTION, INFRA-RED OR VAPOR PHASE REFLOW OVEN
- ⑨ THIS PRODUCT MEETS EUROPEAN UNION DIRECTIVES AND OTHER COUNTRY
REGULATIONS AS DESCRIBED IN GS-22-008
- ⑩ PART NUMBERS ENDING IN "LF" MEANS FOR NOTE 8 LEAD FREE IDENTIFICATION
- ⑪ A  SYMBOL WILL BE NEXT TO ANY DIMENSION, VIEW, OR NOTE WHICH
HAS BEEN MODIFIED WITH THE CURRENT DRAWING REVISION.

spec ref -				dr GL L00		2007-02-12		projection 	MM 	size A3	scale 3:1	
tolerance std ISO 406 ISO 1101	TOLERANCES UNLESS OTHERWISE SPECIFIED			eng GL L00		2007-02-12				ecn no S10-0228		
				chr GL L00		2010-10-28				rel level -		
				appr JOEY NG		2010-10-28						
								product family SAS				
surface  ISO 1302	linear	0.X	± -		title SAS RECEPTACLE WIDE BASE SMT				dwg no 10076579	rev C		
		0.XX	±0.20									
		0.XXX	± -									
	angular	0°	±2°	www.fci.com	cat. no. -		Product - Customer Drw			sheet 3 of 3		

Mouser Electronics

Authorized Distributor

Click to View Pricing, Inventory, Delivery & Lifecycle Information:

[FCI / Amphenol:](#)

[10076579-002C-TRLF](#) [10076579-001LF](#) [10076579-001C-TRLF](#)