

6

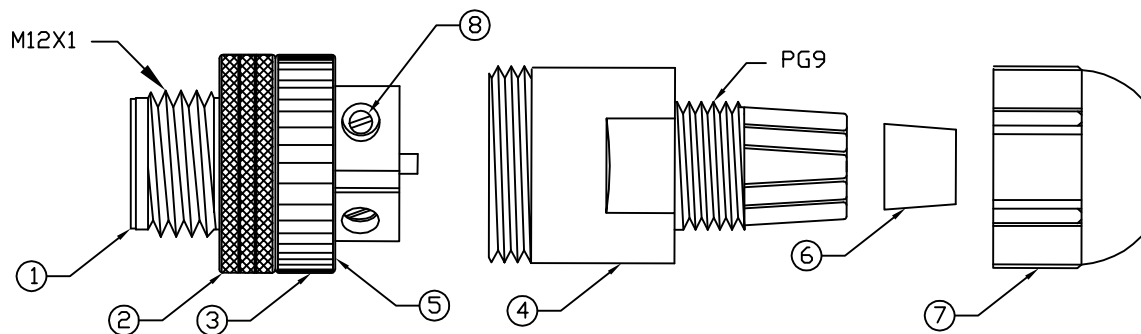
5

4

3

2

1



## NOTES:

## MATERIALS:

MOLDED BODY:	BLACK POLYAMIDE
COUPLING NUT:	NI PLATED BRASS
COMPRESSION NUT:	BLACK POLYAMIDE
GROMMETT	NITRILE RUBBER
CONTACTS:	GOLD/NICKEL OVER COPPER ALLOY
INSERT:	BLACK NYLON
INSERT HOUSING:	BLACK POLYAMIDE
SET SCREWS:	NI PLATED BRASS

## ELECTRICAL:

CURRENT RATING:	4AMP MAX
VOLTAGE RATING:	250V

## MECHANICAL:

TEMPERATURE RANGE:	-20° TO 80°C
INGRESS PROTECTION:	IP 67

## AGENCY CERTIFICATIONS:

AGENCY:	cCSAus FILE LR6837
---------	--------------------

TABLE 2 - COMPONENT INFORMATION

ITEM	QTY	DESCRIPTION
1	1	INSULATOR
2	1	COUPLNG NUT
3	1	INSERT BODY
4	1	CONNECTOR BODY
5	1	O-RING
6	1	GROMMET
7	1	COMPRESSION NUT
8	4	SCREW, M3 x 5

UPDATE PER JM EC NO: WNA2009-0313 DRWN: LHARTMAN 2008/10/27 CHKD: YOU 2008/11/07 APPR: JFMURPHY 2008/11/10	QUALITY SYMBOLS ▽=0 ▽/C=0	GENERAL TOLERANCES (UNLESS SPECIFIED)		DIMENSION STYLE ----		SCALE 1:1	DESIGN UNITS INCH	THIRD ANGLE PROJECTION	
			mm	INCH	DRAWN BY LHARTMAN	DATE 2008/10/27	TITLE MICRO-CHANGE FIELD ATTCH 4 POLE MALE ST FF PG9 FITTING SCREW		
		4 PLACES	±---	±---	CHECKED BY YOU	DATE 2008/10/27			
		3 PLACES	±---	±.005	APPROVED BY JFMURPHY		DATE 2008/10/27	MOLEX INCORPORATED DOCUMENT NO. SD-130044-004 SHEET NO. 1 OF 1	
2 PLACES	±---	±.010	MATERIAL NO. 1200710039		SIZE A	THIS DRAWING CONTAINS INFORMATION THAT IS PROPRIETARY TO MOLEX INCORPORATED AND SHOULD NOT BE USED WITHOUT WRITTEN PERMISSION			
1 PLACE	±---	±.020	ANGULAR ±1°		DRAFT WHERE APPLICABLE MUST REMAIN WITHIN DIMENSIONS				
B	REV								

6

5

4

3

2

1