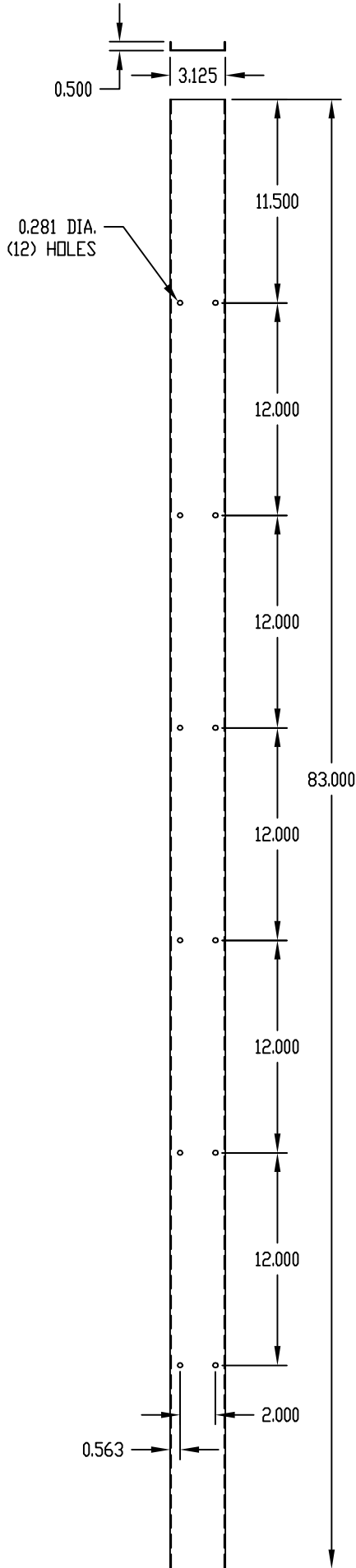


PART
NAME

VERTICAL CABLEWAY COVER

PART
No.

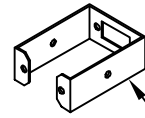
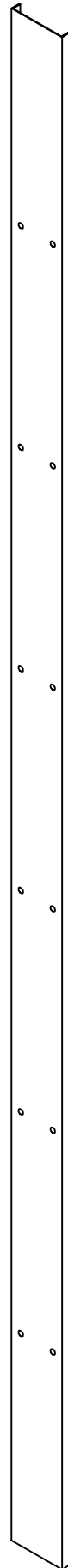
CM-1197



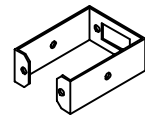
MATERIAL: 20 GA. STEEL

FINISH: SMOOTH BLACK

SUPPLIED WITH QTY. (12)
#12-24 x 1/2 LG. SCREWS
& QTY. (12) #12-24 CLIP NUTS



REF. VERTICAL
CABLEWAY RING
#CM-1195 OR
#CM-1196



Mouser Electronics

Authorized Distributor

Click to View Pricing, Inventory, Delivery & Lifecycle Information:

[Bud Industries:](#)

[CM-1197](#)