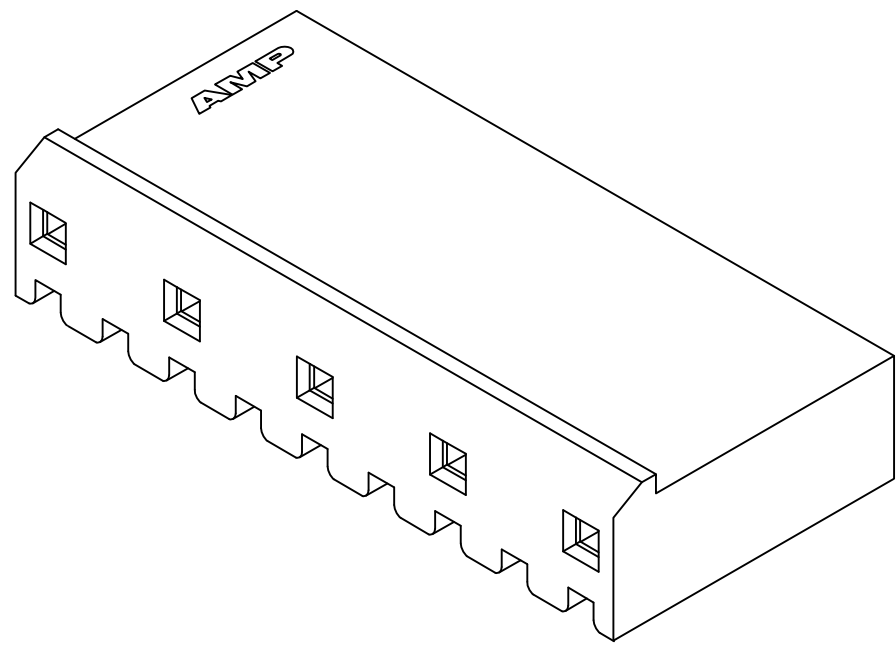
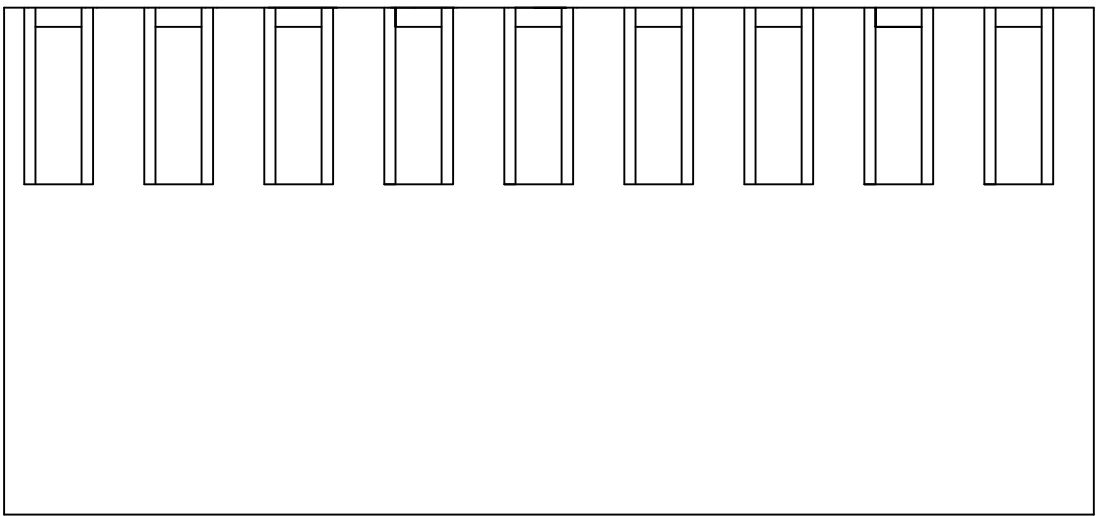
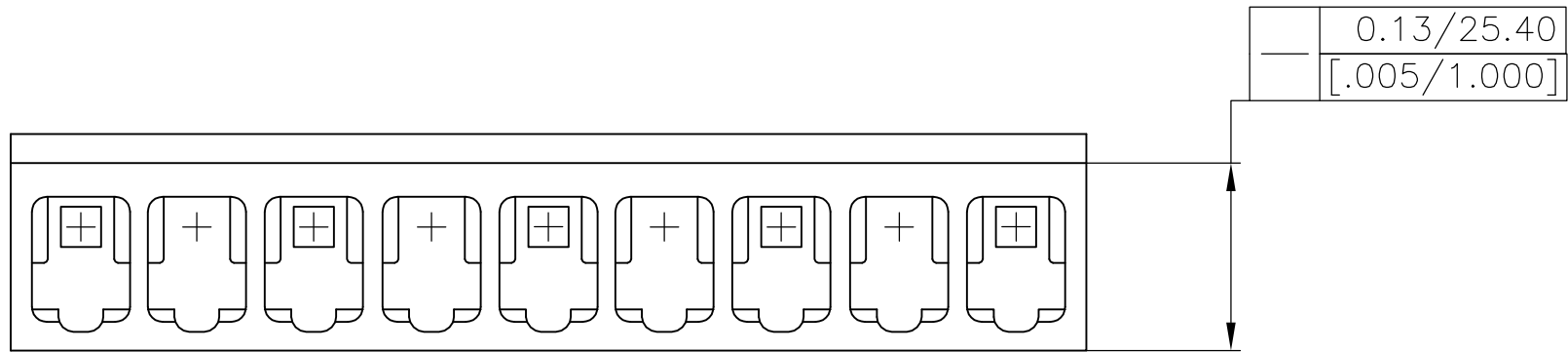
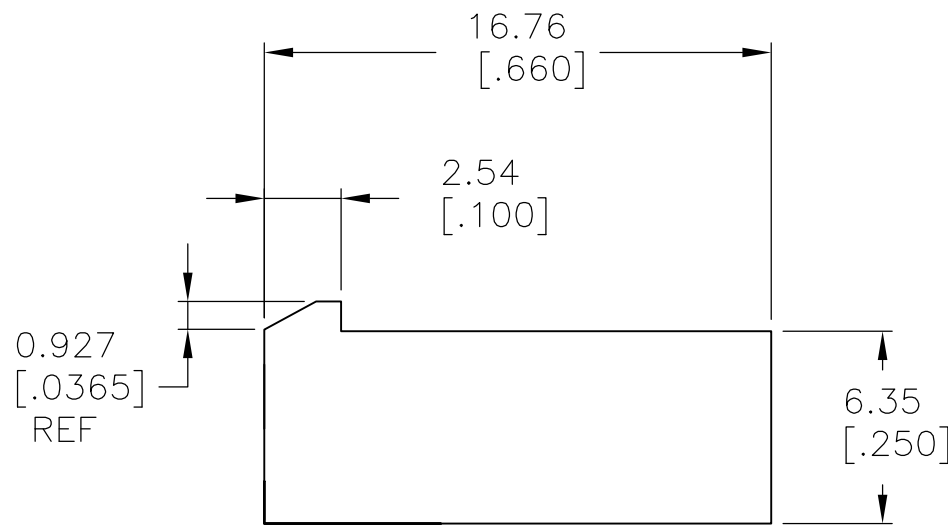
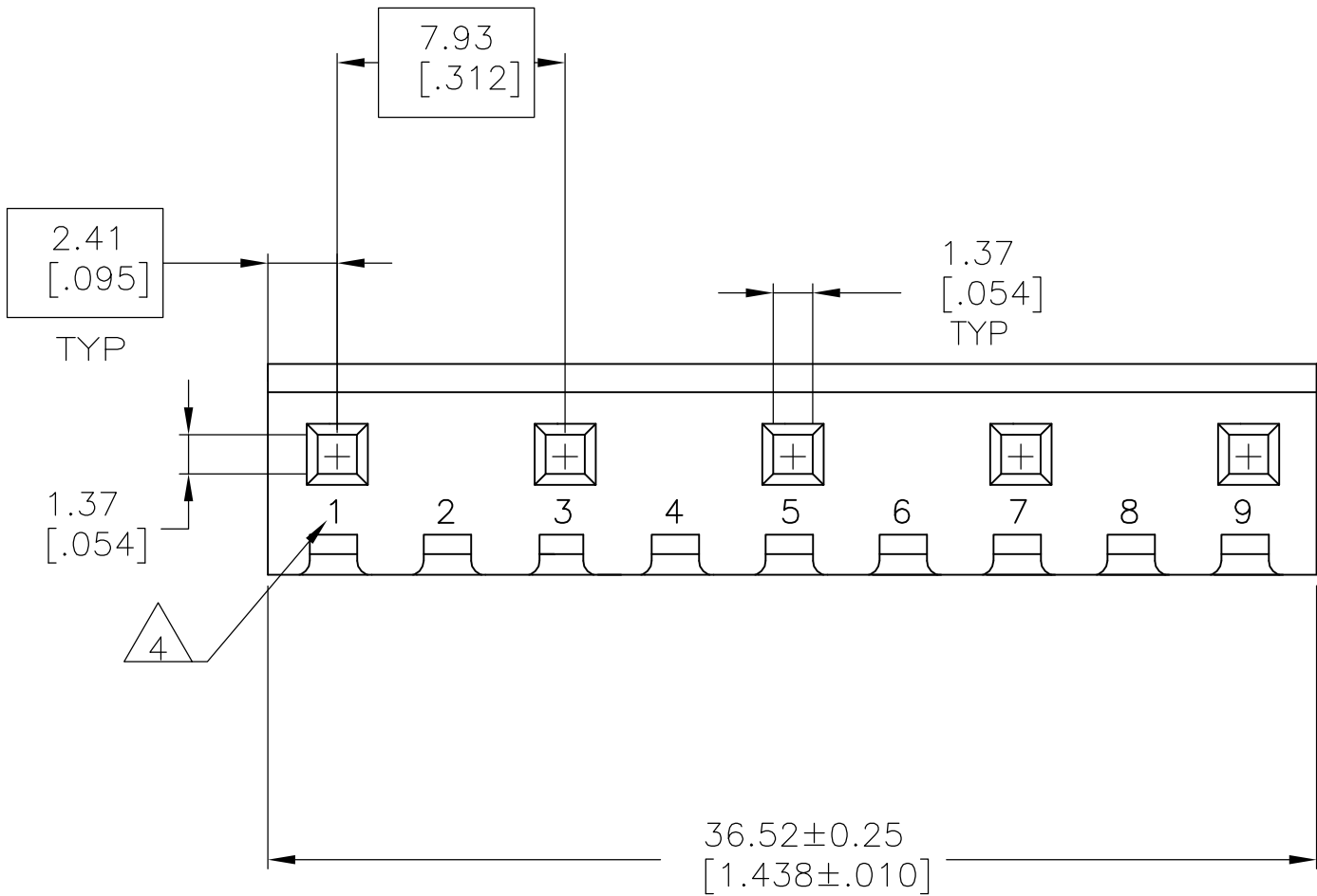
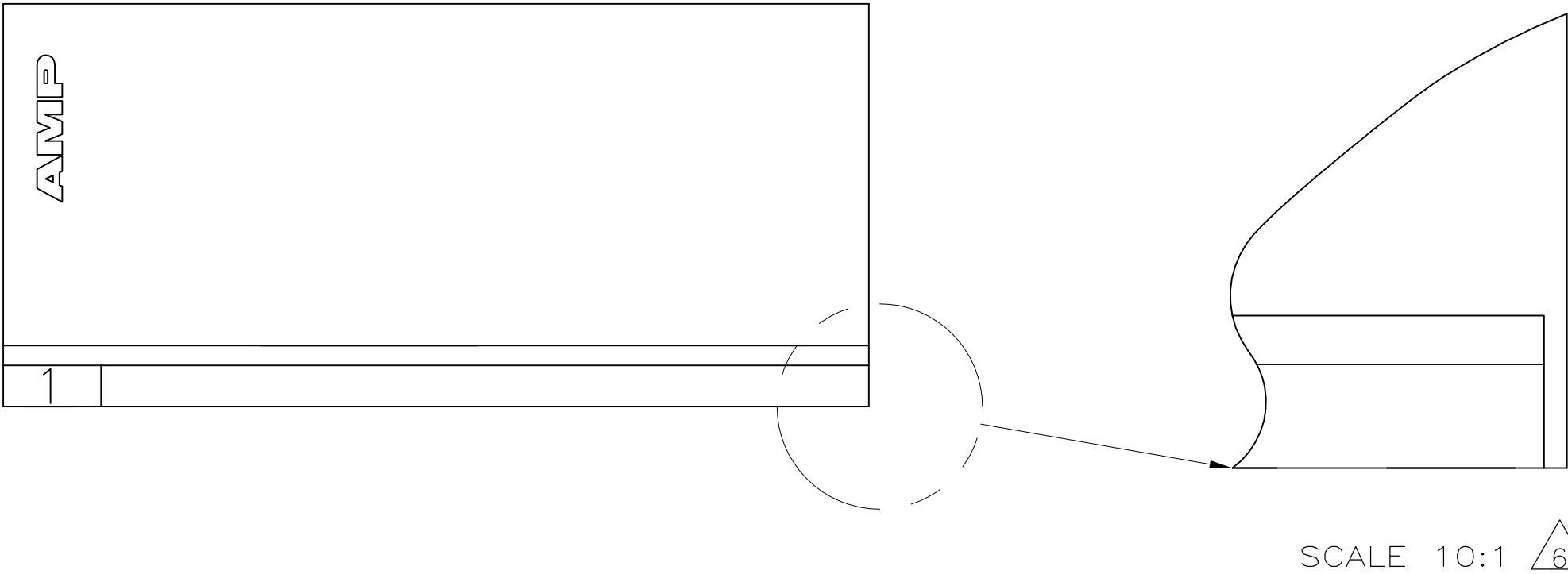
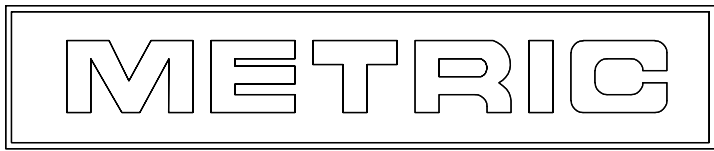


LOC	DIST	REVISIONS					
CM	00	P	LTR	DESCRIPTION		DATE	DWN
		B		REVISED PER ECO-12-007807		06AUG12	SM


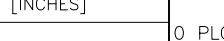
- 1 UNIT ACCEPTS 1.14 [.045] SQUARE OR ROUND POST.
- 2 UNIT ACCEPTS STANDARD SL-156 CONTACTS.
- 3 UNIT ACCEPTS KEYING PLUG 640254-1 AND KEYING PIN 640255-1.
- 4 CIRCUIT I.D. NUMBER(S),TO BE LOCATED SEQUENTIALLY AS SHOWN.
- 5 DIMENSIONS IN BRACKETS ARE IN INCHES.
- 6 OPTIONAL CONSTRUCTION (BOTH CORNERS) UP TO 0.38[.015].
- 7 ACCEPTS UP TO .110 INCH INSULATION WIRE.



3-DIMENSIONAL MODEL  
NTS



2,4,6,8	9	1744138-9
CIRCUIT NO BLOCKED	NO OF CIRCUITS	PART

THIS DRAWING IS A CONTROLLED DOCUMENT.				DWN K. WHITAKER CHK D. BOSSI APVD D. BOSSI PRODUCT SPEC	16NOV2005		 TE Connectivity							
DIMENSIONS: mm [INCHES]		TOLERANCES UNLESS OTHERWISE SPECIFIED:		NAME		HOUSING WITH LOCKING RAMP, SL-156, FOR LARGE WIRE INSULATION								
		0 PLC ± -		APPLICATION SPEC		SIZE		CAGE CODE	DRAWING NO	RESTRICTED TO				
		1 PLC ± -				A1		00779	C1744138	-				
		2 PLC ± -				CUSTOMER DRAWING		SCALE		4:1	SHEET	1 OF 1	REV	B
		3 PLC ± 0.13 [0.005]												
4 PLC ± -		ANGLES ± 0° 30'		WEIGHT										
FINISH		-												
MATERIAL NYLON,UL94V-0,NAT														

# Mouser Electronics

Authorized Distributor

Click to View Pricing, Inventory, Delivery & Lifecycle Information:

[TE Connectivity:](#)

[1744138-9](#)