

MICRO SWITCH

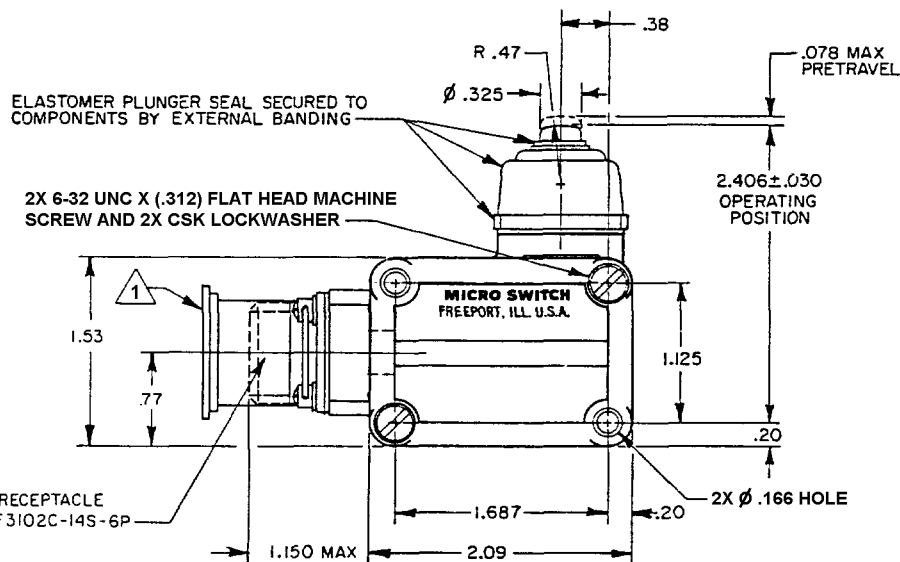
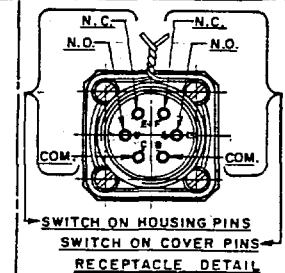
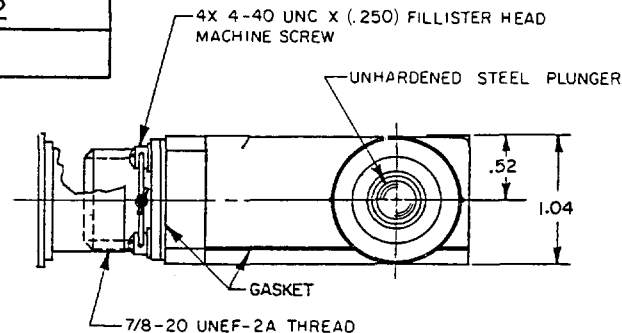
FREEPORT, ILLINOIS, U.S.A.
A DIVISION OF HONEYWELL

FED. MFG. CODE D1929

SWITCH-ENCLOSED

CATALOG LISTING

2VB2



AMPHENOL RECEPTACLE
PART NO. CF3102C-14S-6P

ANSI Y14.5M-1982 APPLIES

THIS DRAWING COVERS A PROPRIETARY ITEM AND IS THE PROPERTY OF MICRO SWITCH, A DIVISION OF HONEYWELL. THIS DRAWING IS NOT TO BE COPIED OR USED WITHOUT THE APPROVAL OF MICRO SWITCH.		SCALE FULL
CHARACTERISTICS		DO NOT SCALE PRINT
ELECTRICAL DATA		UNLESS OTHERWISE SPECIFIED TOLERANCES ARE
OPERATING FORCE ----- 5 LB MAX	CONTACT ARRANGEMENT 2X SPDT	ONE PLACE (.0) ± .030
RELEASE FORCE ----- 0.5 LB MIN		TWO PLACE (.00) ± .015
DIFFERENTIAL TRAVEL ----- .031 MAX	15A 1/2 HP 125, 250 VAC	THREE PLACE (.000) ± .005
OVERTRAVEL ----- .250 MIN	1/2A 125 VDC, 1/4A 250 VDC	ANGLES ± 2°
		WEIGHT

NOTES

- ① FURNISHED WITH SNUG FITTING PLASTIC PROTECTIVE DUST CAP
- 2 - ALUMINUM ENCLOSURE ZINC PHOSPHATE COATED AND FINISHED WITH ONE COAT PRIMER
- 3 - SWITCHES DO NOT OPERATE SIMULTANEOUSLY
- 4 - SWITCH WILL PERFORM SATISFACTORILY IN TEMPERATURES TO MINUS 65°F

CATALOG LISTING
2VB2
PAGE 1 OF 1
RELEASE NO. SR-327-1
REPLACES
DRAWING NUMBER
M
ISSUE
X 17
CHECK
REVISIONS
A C055087 KJS 14 JUN 84
B C058411 CJS NOV 85
C C063567 KJS MAY 88
D C074590 CJS MAR 93
E 201300 CJS SEP 00
F 204536 JAH 11 DEC 01
CHECK
RASTER
DRAIN
KJS 14 JUN 84

Mouser Electronics

Authorized Distributor

Click to View Pricing, Inventory, Delivery & Lifecycle Information:

[Honeywell:](#)

[2VB2](#)