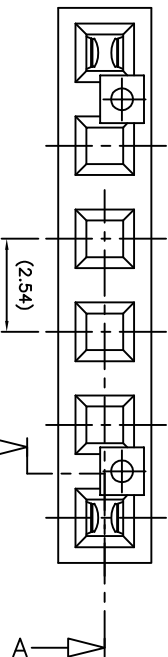
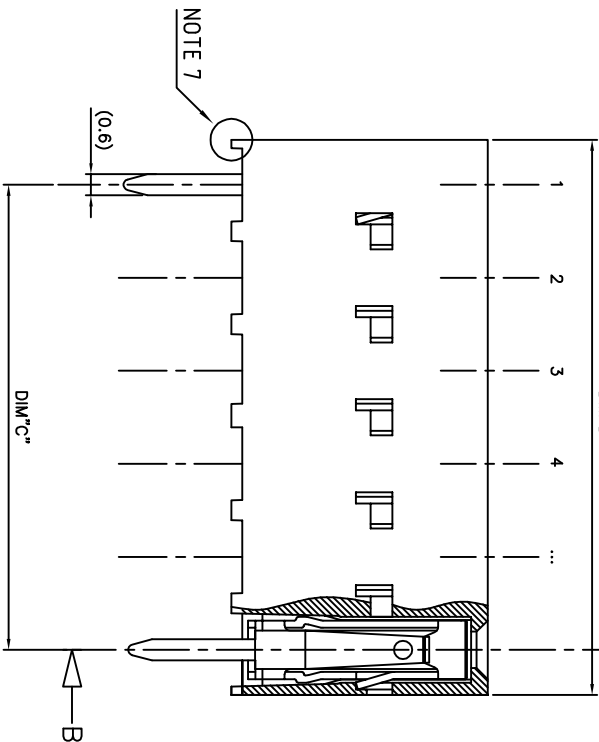


VIEW "A"

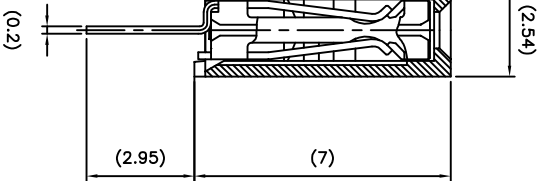


DIM"D"



NOTE 7

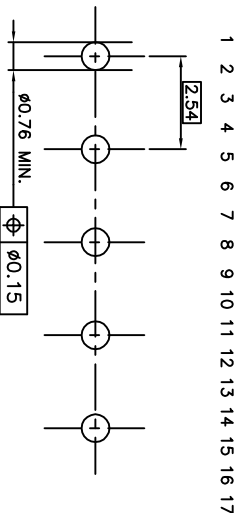
SECTION A-A



SECTION B-B

PRODUCT N°	NB OF TERMINAL	DIM"C"	DIM"D"	CONTACTS PLACED IN CAVITY (ACCORDING TO VIEW "A")													
87627-Y01(H)LF	2	12.70	15.08	X													
87627-Y02(H)LF	5	15.24	17.70		X	X	X										
87627-Y03(H)LF	4	15.24	17.70			X	X	X									
87627-Y04(H)LF	8	40.64	43.10				X	X	X	X							
87627-Y05(H)LF	5	15.24	17.70		X	X	X	X									
87627-Y06(H)LF	5	15.24	17.70		X	X	X	X									
87627-Y07(H)LF	3	10.16	12.62		X	X	X										
87627-Y08(H)LF	7	35.56	43.10		X	X	X	X	X	X							
87627-Y09(H)LF	4	15.24	17.70		X	X	X	X									

ROHS COMPATIBLE, SEE NOTE 6



RECOMMENDED HOLE PATTERN

NOTES:

- 1 - MATERIAL HOUSING: THERMOPLASTIQUE POLYESTER 30% GLASS FILLED, COLOUR BLUE. FLAME RETARDANT PER UL-94V0.
- 2 - MATERIAL TERMINAL: PHOSPHOR BRONZE EXTRA HARD.
- 3 - RECOMMENDED APPLICATION DATA: SEE TA 804.
- 4 - SUFFIX LETTER "H" AT THE END OF THE P/N INDICATES A HIGH TEMPERATURE HOUSING. MATERIAL: PCT 30% GLASS FILLED COLOR GREY. FLAME RETARDANT PER UL-94V0.
- 5 - PRODUCT PACKAGED IN TUBE.
- 6 - RoHS COMPATIBLE PRODUCT SPECIFICATIONS
- a - PLATING:
 - "LF" MEANS THE PRODUCT IS LEAD-FREE, 2µm MINIMUM MATTE TIN OVER 1.27µm MINIMUM NICKEL UNDERPLATE.
- b - MANUFACTURING PROCESS COMPATIBILITY
 - THE HOUSING WILL WITHSTAND EXPOSURE TO 260°C ±5°C SOLDER BATH TEMPERATURE FOR 5 SECONDS IN A WAVE SOLDER APPLICATION WITH A 1.6mm MIN THICK CIRCUIT BOARD.
- c - LABELING:
 - MEETS PACKAGING SPECS AS PER GS-14-920
- d - LEGAL STATEMENT: SEE GS-47-0004
- 7 - END STAND-OFFS FOR 1x2 UP TO 1x5 POS
NO END STAND-OFFS FOR 1x6 UP TO 1x50 POS

87627-4XXLF	5µm Sn	Sn
87627-3XXLF	0.76µm GOLD	Sn
PLATING CODE	CONTACT AREA	SOLDER TAIL
	PLATING THICKNESS OVER 1.27µm Ni	

REV.	DATE	DESCRIPTION	BY	CHKD
1	10/21/10	NEW	FCI	
2	10/21/10	REVISED	FCI	
3	10/21/10	REVISED	FCI	
4	10/21/10	REVISED	FCI	
5	10/21/10	REVISED	FCI	
6	10/21/10	REVISED	FCI	
7	10/21/10	REVISED	FCI	
8	10/21/10	REVISED	FCI	
9	10/21/10	REVISED	FCI	
10	10/21/10	REVISED	FCI	
11	10/21/10	REVISED	FCI	
12	10/21/10	REVISED	FCI	
13	10/21/10	REVISED	FCI	
14	10/21/10	REVISED	FCI	
15	10/21/10	REVISED	FCI	
16	10/21/10	REVISED	FCI	
17	10/21/10	REVISED	FCI	
18	10/21/10	REVISED	FCI	
19	10/21/10	REVISED	FCI	
20	10/21/10	REVISED	FCI	
21	10/21/10	REVISED	FCI	
22	10/21/10	REVISED	FCI	
23	10/21/10	REVISED	FCI	
24	10/21/10	REVISED	FCI	
25	10/21/10	REVISED	FCI	
26	10/21/10	REVISED	FCI	
27	10/21/10	REVISED	FCI	
28	10/21/10	REVISED	FCI	
29	10/21/10	REVISED	FCI	
30	10/21/10	REVISED	FCI	
31	10/21/10	REVISED	FCI	
32	10/21/10	REVISED	FCI	
33	10/21/10	REVISED	FCI	
34	10/21/10	REVISED	FCI	
35	10/21/10	REVISED	FCI	
36	10/21/10	REVISED	FCI	
37	10/21/10	REVISED	FCI	
38	10/21/10	REVISED	FCI	
39	10/21/10	REVISED	FCI	
40	10/21/10	REVISED	FCI	
41	10/21/10	REVISED	FCI	
42	10/21/10	REVISED	FCI	
43	10/21/10	REVISED	FCI	
44	10/21/10	REVISED	FCI	
45	10/21/10	REVISED	FCI	
46	10/21/10	REVISED	FCI	
47	10/21/10	REVISED	FCI	
48	10/21/10	REVISED	FCI	
49	10/21/10	REVISED	FCI	
50	10/21/10	REVISED	FCI	
51	10/21/10	REVISED	FCI	
52	10/21/10	REVISED	FCI	
53	10/21/10	REVISED	FCI	
54	10/21/10	REVISED	FCI	
55	10/21/10	REVISED	FCI	
56	10/21/10	REVISED	FCI	
57	10/21/10	REVISED	FCI	
58	10/21/10	REVISED	FCI	
59	10/21/10	REVISED	FCI	
60	10/21/10	REVISED	FCI	
61	10/21/10	REVISED	FCI	
62	10/21/10	REVISED	FCI	
63	10/21/10	REVISED	FCI	
64	10/21/10	REVISED	FCI	
65	10/21/10	REVISED	FCI	
66	10/21/10	REVISED	FCI	
67	10/21/10	REVISED	FCI	
68	10/21/10	REVISED	FCI	
69	10/21/10	REVISED	FCI	
70	10/21/10	REVISED	FCI	
71	10/21/10	REVISED	FCI	
72	10/21/10	REVISED	FCI	
73	10/21/10	REVISED	FCI	
74	10/21/10	REVISED	FCI	
75	10/21/10	REVISED	FCI	
76	10/21/10	REVISED	FCI	
77	10/21/10	REVISED	FCI	
78	10/21/10	REVISED	FCI	
79	10/21/10	REVISED	FCI	
80	10/21/10	REVISED	FCI	
81	10/21/10	REVISED	FCI	
82	10/21/10	REVISED	FCI	
83	10/21/10	REVISED	FCI	
84	10/21/10	REVISED	FCI	
85	10/21/10	REVISED	FCI	
86	10/21/10	REVISED	FCI	
87	10/21/10	REVISED	FCI	
88	10/21/10	REVISED	FCI	
89	10/21/10	REVISED	FCI	
90	10/21/10	REVISED	FCI	
91	10/21/10	REVISED	FCI	
92	10/21/10	REVISED	FCI	
93	10/21/10	REVISED	FCI	
94	10/21/10	REVISED	FCI	
95	10/21/10	REVISED	FCI	
96	10/21/10	REVISED	FCI	
97	10/21/10	REVISED	FCI	
98	10/21/10	REVISED	FCI	
99	10/21/10	REVISED	FCI	
100	10/21/10	REVISED	FCI	

Mouser Electronics

Authorized Distributor

Click to View Pricing, Inventory, Delivery & Lifecycle Information:

[FCI / Amphenol:](#)

[87627-404LF](#)