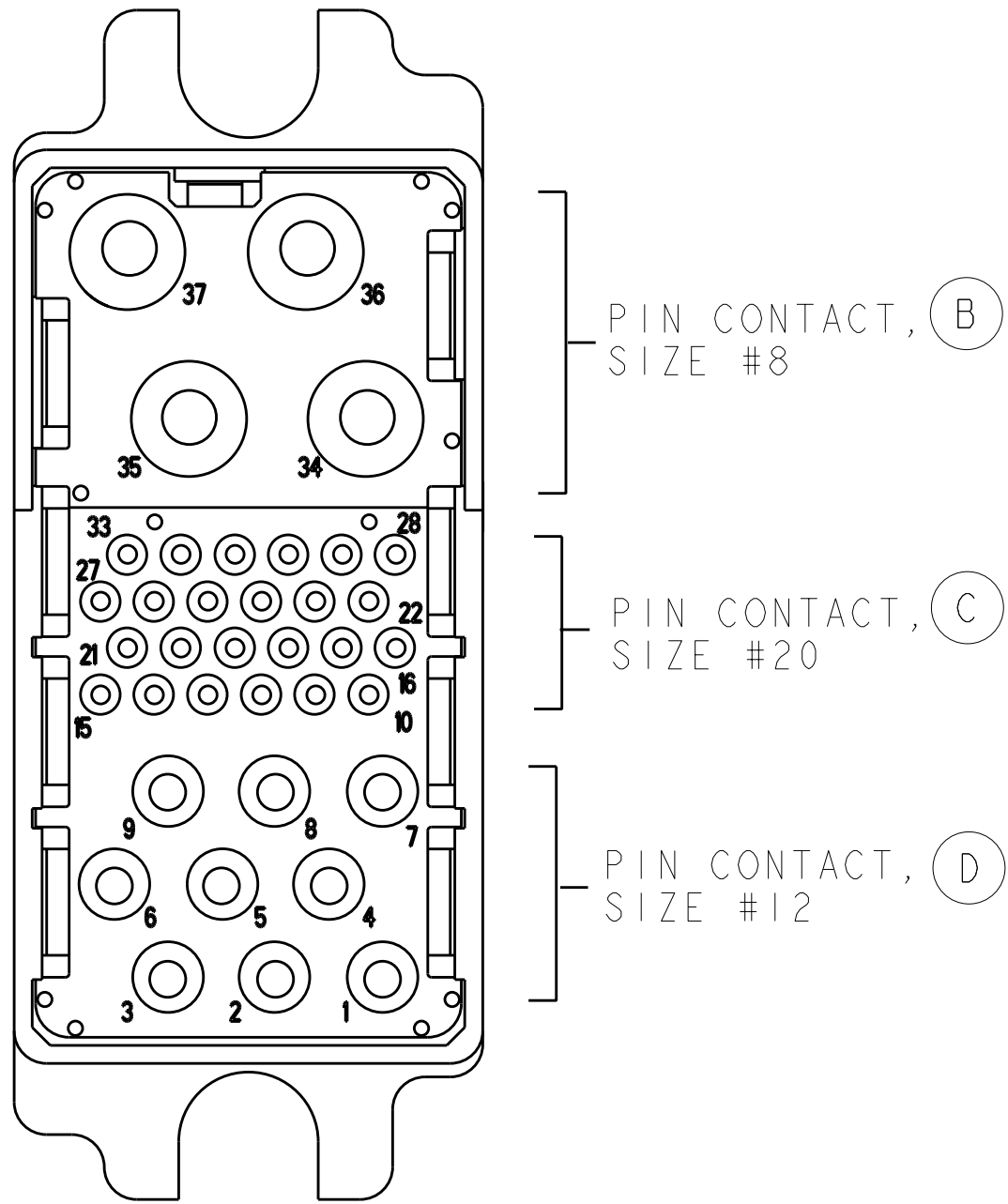
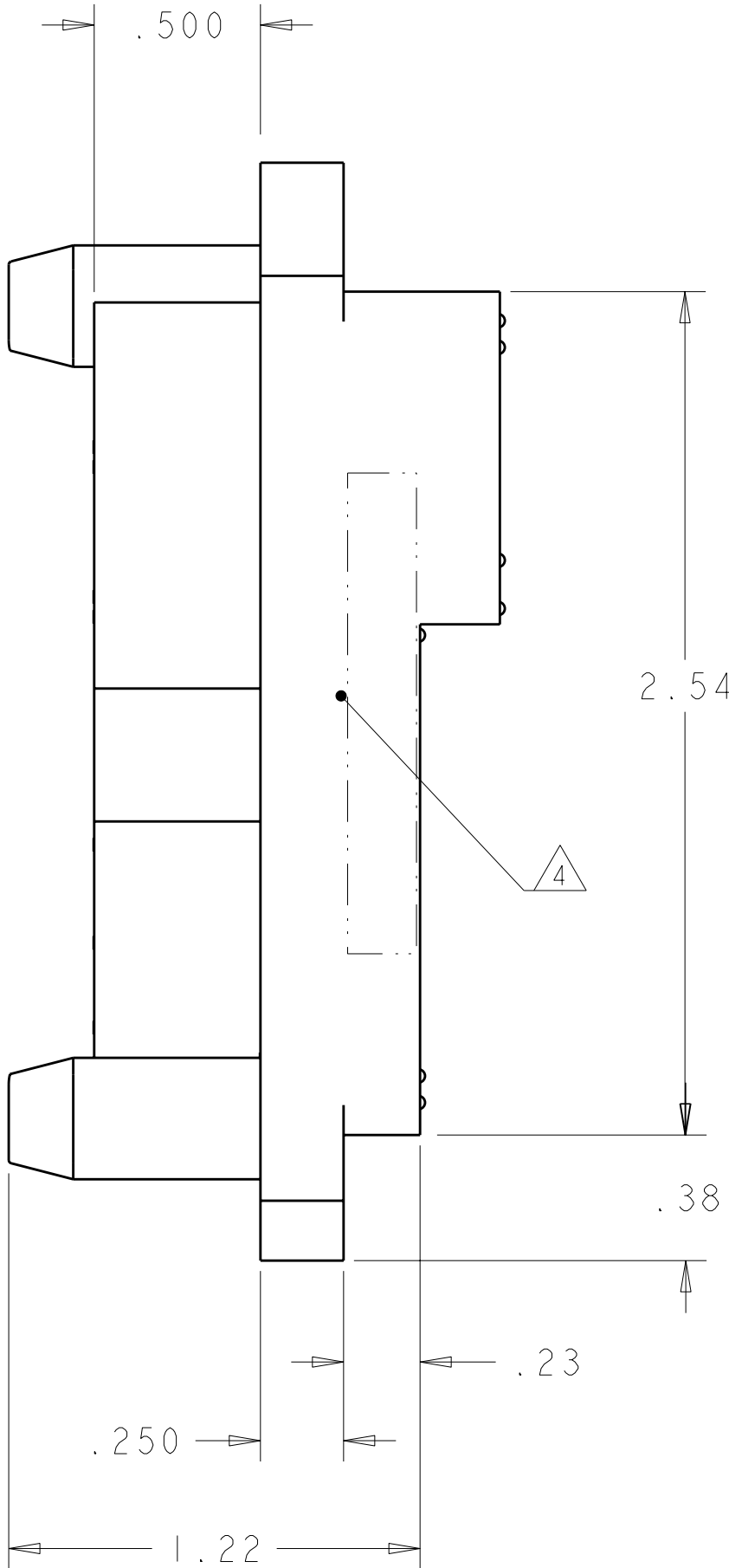
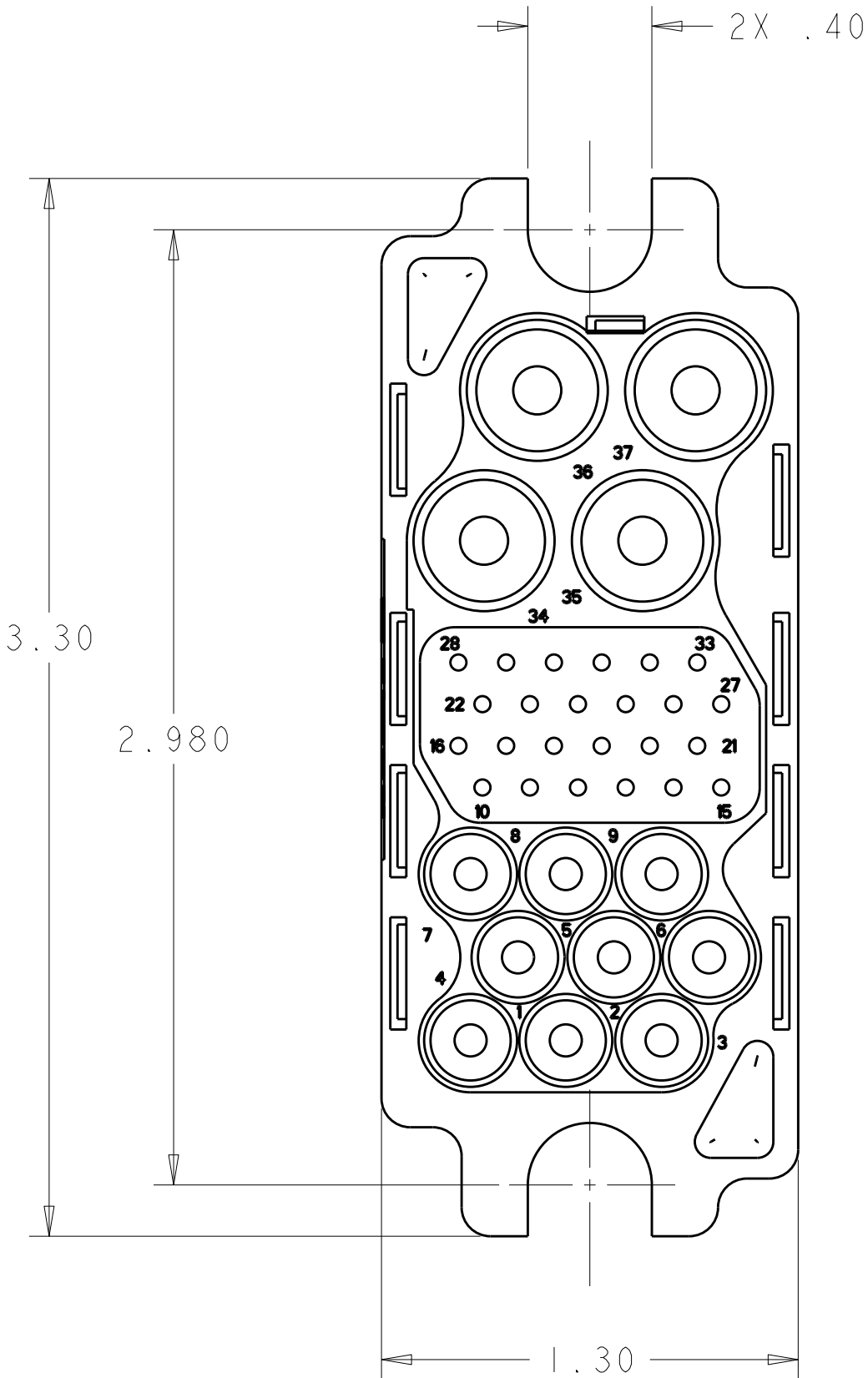


LOC	DIST	REVISIONS					
GP	00	P	LTR	DESCRIPTION	DATE	DWN	APVD
			A	RELEASED	18AUG2009	RG	DO



PIN CONTACT, (B)  
SIZE #8

PIN CONTACT, (C)  
SIZE #20

PIN CONTACT, (D)  
SIZE #12

REAR VIEW

ELCON 75A MIDDLE DRAWER

THIS DRAWING IS A CONTROLLED DOCUMENT FOR TYCO ELECTRONICS CORPORATION IT IS SUBJECT TO CHANGE AND THE CONTROLLING ENGINEERING ORGANIZATION SHOULD BE CONTACTED FOR THE LATEST REVISION.		DWN R. GRZYBOWSKI 3AUG09	Tyco Electronics Harrisburg, PA 17105-3608			
DIMENSIONS: INCHES		CHK D. ORRIS 3AUG09	NAME PIN CONNECTOR ASSEMBLY CRIMP STYLE MIDDLE DRAWER			
TOLERANCES UNLESS OTHERWISE SPECIFIED:		APVD M. PERCHERKE 3AUG09	SIZE A200779			
0 PLC ± 1 PLC ±.02 2 PLC ±.010 3 PLC ±.010 4 PLC ±.010 ANGLES ±.5 FINISH		PRODUCT SPEC 108-2285 APPLICATION SPEC 114-13206 WEIGHT -	DRAWING NO C-2085276			
MATERIAL -		CUSTOMER DRAWING		RESTRICTED TO -		
		SCALE 4:1		SHEET 1 OF 2 REV A		

LOC	DIST	REVISIONS					
GP	00	P	LTR	DESCRIPTION	DATE	DWN	APVD
			-	SEE SHEET 1	-	-	-

1. PART NUMBER CHANGES AND OR DESIGN CHANGES AFFECTING THE INTERCHANGEABILITY REQUIRE PRIOR TYCO ELECTRONICS APPROVAL AND AUTHORIZATION BY REVISION TO THIS DRAWING.

2. MATERIAL:  
INSULATOR: THERMOPLASTIC, GLASS REINFORCED, UL 94V-0  
FLAMMABILITY RATED, COLOR: BLACK  
CONTACT: BRASS ROD ALLOY  
CROWN BAND: COPPER ALLOY  
RETENTION CLIP: COPPER ALLOY OR STAINLESS STEEL

3. FINISH:  
CONTACTS SIZE #8 : .000200 MIN THK. SILVER OVER  
.000040 MIN NICKEL  
CONTACTS SIZE #12 & 20 : .000010 MIN GOLD OVER  
.000050 MIN NICKEL

4. ITEMS PROVIDED TO THIS SPECIFICATION TO BE PERMANENTLY IDENTIFIED PER THE FOLLOWING IDENTIFIER:

TYCO ELECTRONICS P/N

XXXXXX-X

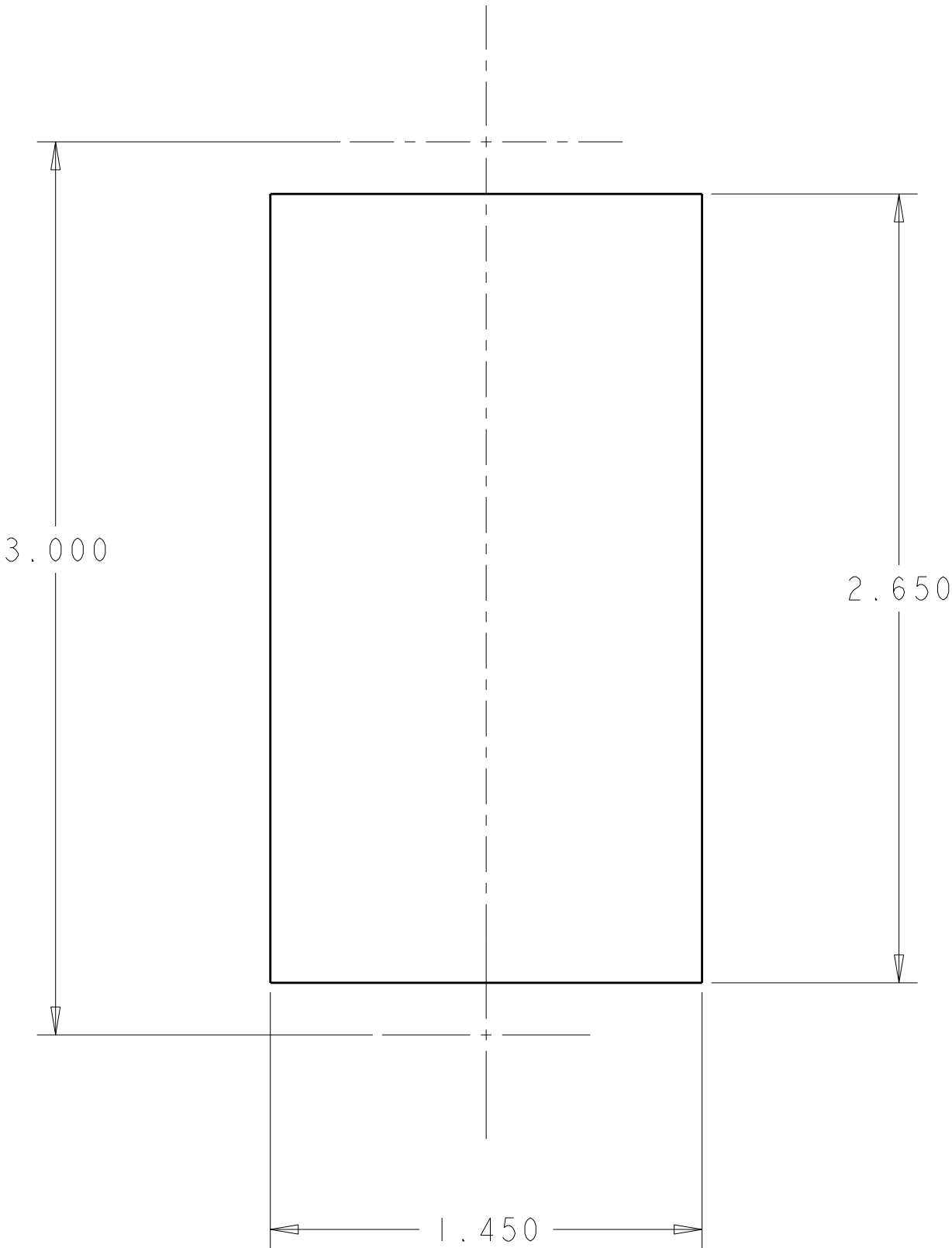
DATE CODE (e.g. 0216)

XXXX

YEAR

WEEK

5. CRIMP CONTACTS AND SHOULDER SCREWS (ITEMS B THRU E ) SHALL BE PACKAGED SEPARATELY AND PLACED IN THE BOX WITH THE CONNECTOR ASSEMBLY.



SUGGESTED PANEL CUT-OUT  
VIEWED FROM CONNECTOR MOUNTING SIDE

5	2	1650106-1	SCREWS, SHOULDER, 6-32 THD	E
5	9	1650153-2	CONTACT, PIN, SIZE #12, CRIMP	D
5	24	1650155-1	CONTACT, PIN, SIZE #20, CRIMP, STD	C
5	4	1766192-1	CONTACT, PIN, SIZE #8, CRIMP, STD	B
	1	1648162-2	HOUSING, PIN, FLOAT MOUNT	A
	- 1	PART NUMBER	DESCRIPTION	ITEM

THIS DRAWING IS A CONTROLLED DOCUMENT FOR TYCO ELECTRONICS CORPORATION. IT IS SUBJECT TO CHANGE AND THE CONTROLLING ENGINEERING ORGANIZATION SHOULD BE CONTACTED FOR THE LATEST REVISION.		DWN R. GRZYBOWSKI 3AUG09	Tyco Electronics Harrisburg, PA 17105-3608	
DIMENSIONS: INCHES		CHK D. ORRIS 3AUG09	NAME PIN CONNECTOR ASSEMBLY CRIMP STYLE MIDDLE DRAWER	
		APVD M. PERCHERKE 3AUG09		
		PRODUCT SPEC 108-2285		
TOLERANCES UNLESS OTHERWISE SPECIFIED: 0 PLC ± 1 PLC ±.02 2 PLC ±.010 3 PLC ±.010 4 PLC ±.010 ANGLES ±.5		APPLICATION SPEC 114-13206	SIZE A200779	
MATERIAL -		WEIGHT -	DRAWING NO C-2085276	
		CUSTOMER DRAWING		RESTRICTED TO -
		SCALE 4:1	SHEET 2	OF 2
		REV A		

ELCON 75A MIDDLE DRAWER

# Mouser Electronics

Authorized Distributor

Click to View Pricing, Inventory, Delivery & Lifecycle Information:

[TE Connectivity:](#)

[2085276-1](#)