

4

3

2

1

THIS DRAWING IS UNPUBLISHED.

RELEASED FOR PUBLICATION

© COPYRIGHT

ALL RIGHTS RESERVED.

LOC

DIST


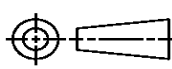
REVISIONS


P	LTR	DESCRIPTION	DATE	DWN	APVD
	B1	ECR-14-001903	17FEB2014	GK	MHR

REPLACED BY OCEAN STYLE APPLICATOR PART
NUMBER 2151043-1

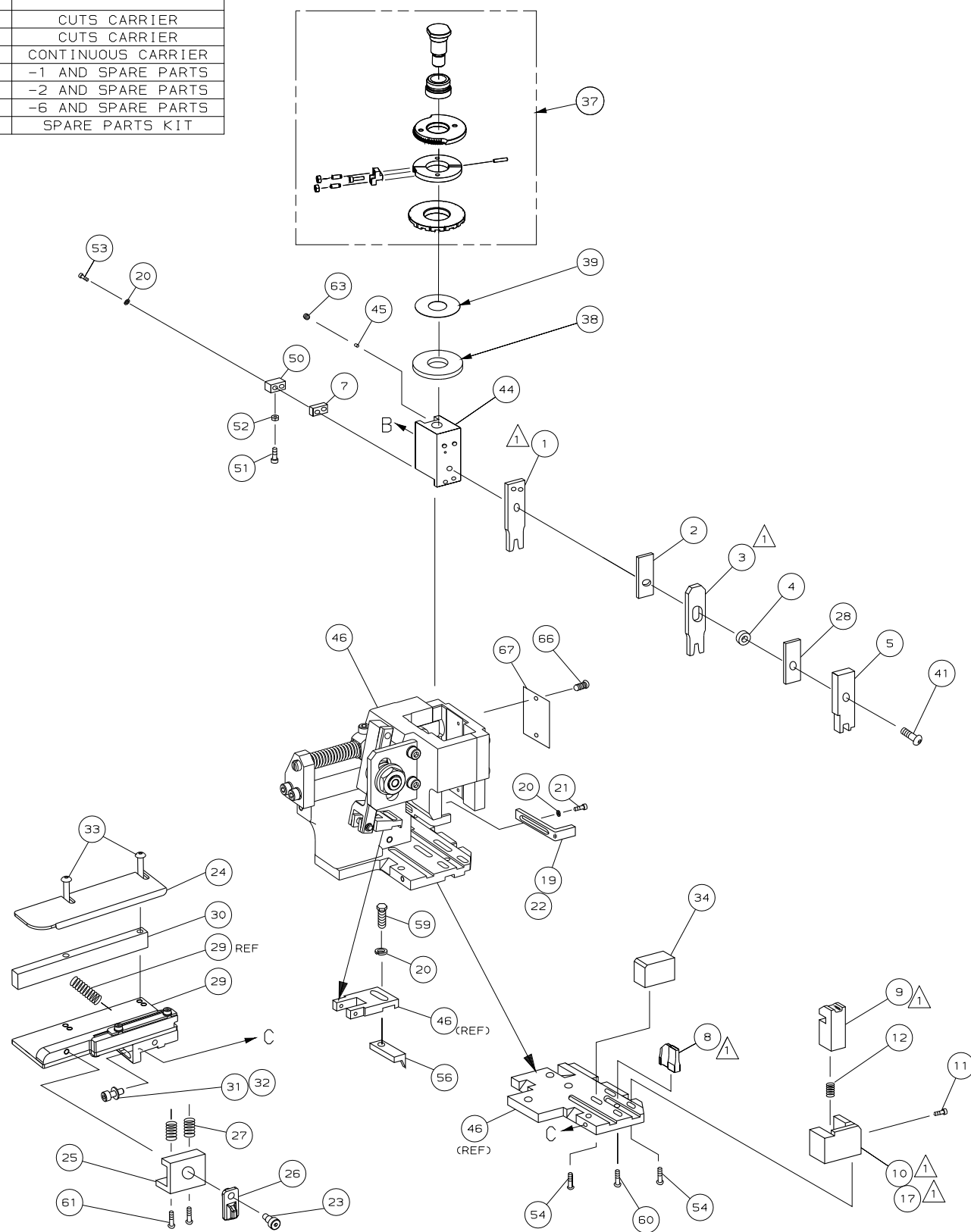
FOR REPLACEMENT PARTS FOR APPLICATOR 1528355
REFER TO ADDITIONAL PAGE(S). SPARE PARTS KIT (IF LISTED)
WILL REMAIN AVAILABLE.

THE REPLACEMENT OCEAN STYLE APPLICATOR HAS THE
SAME TERMINATOR/PRESS INTERFACE AS APPLICATOR
1528355

THIS DRAWING IS A CONTROLLED DOCUMENT.		DWN GOPALAKRISHNA HV		 TE Connectivity	
DIMENSIONS:		CHK RAGHAVENDRA			
		APVD RAGHAVENDRA		NAME FINE ADJ SIDE FD HD-I APPL	
		PRODUCT SPEC		SIZE A3	
		APPLICATION SPEC		CAGE CODE	
MATERIAL		WEIGHT		DRAWING NO C- 1528355	
FINISH		CUSTOMER DRAWING		RESTRICTED TO	
		SCALE		SHEET 1 OF 2 REV B1	

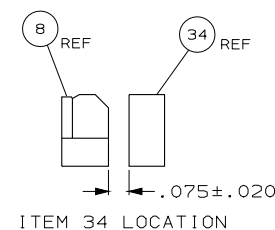


1. RECOMMENDED SPARE PARTS.
2. GREASE RAM, CAM, CAM FOLLOWER AND FEED ROD LIGHTLY.
3. LUBRICATE DAILY PER THE APPLICATOR INSTRUCTION SHEET SUPPLIED WITH THE APPLICATOR.



* WARNING:

ON INSTALLATION, SET WIRE
DISC TO LARGEST WIRE SIZE
SETTING. USE OF SETTINGS
BELOW MIN REQUIRED CRIMP
HEIGHT SETTING WILL CAUSE
DAMAGE TO CRIMP TOOLING.



GUIDE OFF
INSULATION BARREL

	-	1	1	1	1	1	1	1528355	PRINT, APPLICATOR LOG SHEET	72
	-	1	1	1	1	1	1	1338705-3	DOCUMENTATION PACKAGE	71
										70
										69
	-	1	1	1	1	1	1	461264-5	PLATE, IDENTIFICATION	68
	-	2	2	2	2	2	2	21017-2	SCR,DRIVE (#2x.19) ID PLATE	67
										66
										65
	-	1	1	1	1	1	1	3-18031-0	SCR,SKT SET (M6X6) RAM	64
	-	2	2	2	2	2	2	2-18032-5	SCR,SET (M5X20) DRAG	63
	-	1	1	1	1	1	1	18024-7	SCR,BHC (M4X10) ANVIL	62
	-	1	1	1	1	1	1	5-18022-2	SCR,HEX (M4X8) FEED FINGER	61
										60
										59
										58
	-	1	1	1	1	1	1	1338685-1	PAWL, FEED	57
										56
	-	4	4	4	4	4	4	18024-8	SCR,BHC (M4x12) SHEAR HOLDER	55
	-	2	2	2	2	2	2	9-18023-6	SCR,SHC (M4x14) TERM HLD DWN	54
	-	1	1	1	1	1	1	18030-1	NUT, HEX (M3) HOLD DOWN	53
	-	1	1	1	1	1	1	811242-5	BUMPER, HOLDDOWN	52
	-	1	1	1	1	1	1	690753-2	SPACER, TONKER	51
	-	1	1	1	1	1	1	18024-3	SCR,BHC (M3X10) CAM	50
	-	-	1	-	-	1	-	1338675-1	CAM, PRE FEED 30 & 40 mm ST	49
	-	1	-	1	1	-	1	1338676-1	CAM, POST FEED 30 & 40 mm ST	48
	-	1	1	1	1	1	1	1320999-3	APPLICATOR BASIC SUBASSY	47
	-	1	1	1	1	1	1	690191-1	PLUG, NYLON	46
	-	1	1	1	1	1	1	1338660-1	RAM	45
										44
										43
	-	1	1	1	1	1	1	2-18024-6	SCR,BHC (M8X25) RAM	42
	-	1	1	1	1	1	1	690125-1	SHIM SUBASSY	41
	-	1	1	1	1	1	1	469367-8	SPACER, FINE ADJUST	40
	-	1	1	1	1	1	1	879103-3	FINE ADJUST HEAD SUBASSY	39
										38
										37
										36
										35
	-	1	1	1	1	1	1	2-1320934-5	SUPPORT, TERMINAL	34
	-	2	2	2	2	2	2	1-18024-0	SCR,BHC (M4X20) STRIP GUIDE	33
	-	1	1	1	1	1	1	18027-2	WASHER, FLAT (M4)	32
	-	1	1	1	1	1	1	1-18023-2	SCR,SKT CAP (M4X12) MOUNT BLOCK	31
	-	1	1	1	1	1	1	1320908-1	SPACER, STRIP GUIDE	30
	-	1	1	1	1	1	1	1633073-6	STRIP GUIDE PLATE ASSY	29
	-	1	1	1	1	1	1	455888-6	SPACER, FRONT SHEAR DEP	28
	-	2	2	2	2	2	2	1-22284-0	SPRING, DRAG	27
	-	1	1	1	1	1	1	356835-1	LEVER, DRAG RELEASE	26
	-	1	1	1	1	1	1	240792-1	DRAG, TERMINAL	25
	-	1	1	1	1	1	1	1320928-1	PLATE, STRIP GUIDE	24
	-	1	1	1	1	1	1	980371-4	SCR,SHC SHLD	23
	-	1	-	1	1	-	1	690472-2	STRIPPER	22
	-	1	1	1	1	1	1	1-18023-1	SCR,SHC (M4X10) STRIPPER	21
	-	4	4	4	4	4	4	18025-2	WASHER, LOCK (M4) STRIPPER	20
	-	-	1	-	-	1	-	690472-1	STRIPPER	19
↑	-	1	-	-	1	-	-	1338684-1	HOLDER, SHEAR, FRONT (NO-CUT)	18
										17
										16
										15
										14
										13
	-	1	1	1	1	1	1	3-22280-3	SPRING, SHEAR	12
	-	1	1	1	1	1	1	356885-4	STOP, SHEAR	11
↑	-	-	1	1	-	1	1	1320921-1	HOLDER, SHEAR, FRONT (CUT)	10
↑	-	1	1	1	1	1	1	1-462006-8	SHEAR, FLOAT (FRONT)	9
↑	1	2	2	2	1	1	1	5-1333202-7	ANVIL	8
	-	1	1	1	1	1	1	1-240641-3	SPACER, DEPRESSOR (REAR)	7
										6
	-	1	1	1	1	1	1	2-455889-0	DEPRESSOR, SHEAR (FRONT)	5
	-	1	1	1	1	1	1	238011-4	SPACER, BLOCK CRIMPER	4
↑	1	2	2	2	1	1	1	1-683454-4	CRIMPER, INSULATION	3
↑	-	1	1	1	1	1	1	455888-7	SPACER, CRIMPER	2
	1	2	2	2	1	1	1	1-456403-3	CRIMPER, WIRE	1
	-77	-76	-72	-71	-6	-2	-1	PART NO	DESCRIPTION	ITEM NO
								← REVISION OF EACH ASSY NO (WHEN BLANK, USE DWG REVISION)		
	QTY REQD PER ASSY							PARTS LIST		
	DIMENSIONS, mm (INCHES)							MATL	HT TR	FIN
	DO NOT SCALE PRINT.									
	TOLERANCES UNLESS OTHERWISE SPECIFIED.									
	1 PLC DEC ±-							DR M. CLIFFORD	08MAR04	APP 08MAR04
	2 PLC DEC ±-							CHK -		P. BACKHURST
	3 PLC DEC ±-									REL 03APR04
	ANGLES ±-									L. LOFTHOUSE
	NAME							FINE ADJ SIDE FD HD-I APPL		MACHINE REF
	SCALE								DWG NO	HD-I APPL
	DATE							1528355		SHEET 1 OF 1
	CAGE CODE 00779							CUSTOMER AND ASSEMBLY DRAWING		REV B
										RESTRICTED TO -

Mouser Electronics

Authorized Distributor

Click to View Pricing, Inventory, Delivery & Lifecycle Information:

[TE Connectivity:](#)

[1528355-6](#)