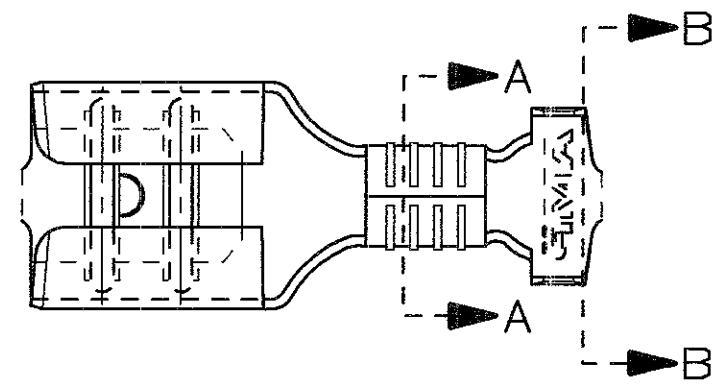
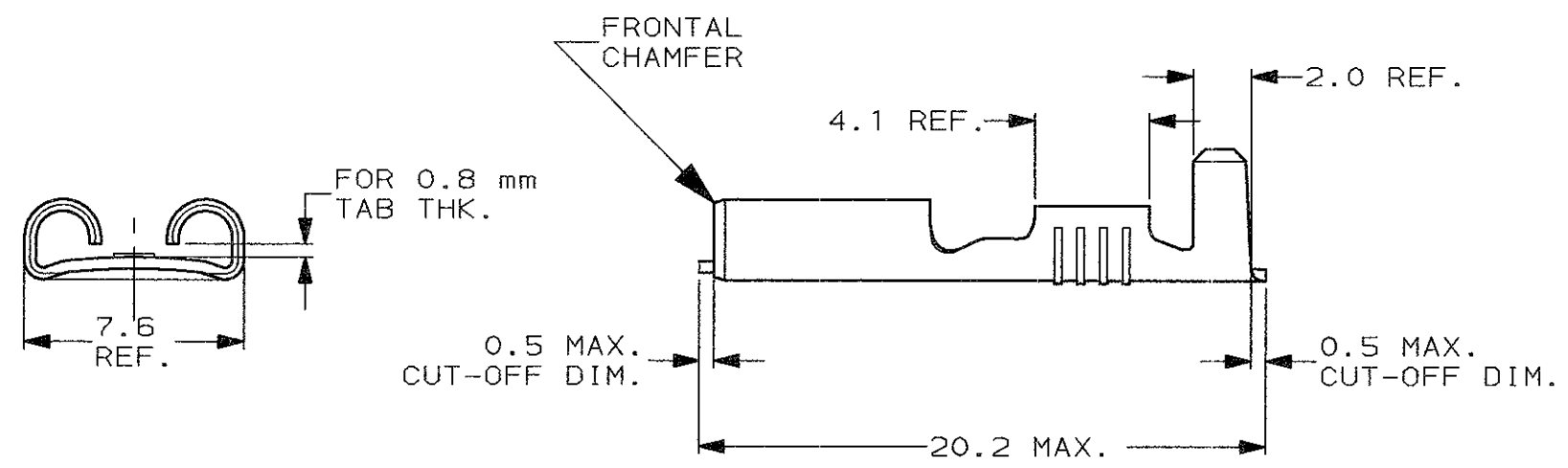


SCALA NON IMPEGNATIVA  
(DO NOT SCALE)  
DIMENSIONI IN mm  
(DIMENSIONS IN)

**METRIC**



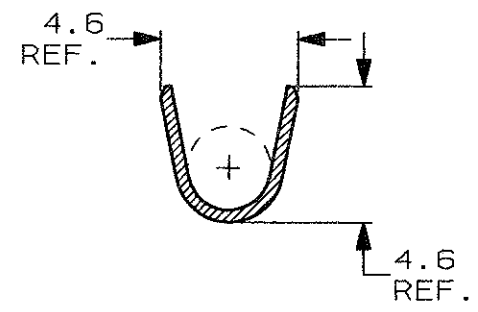
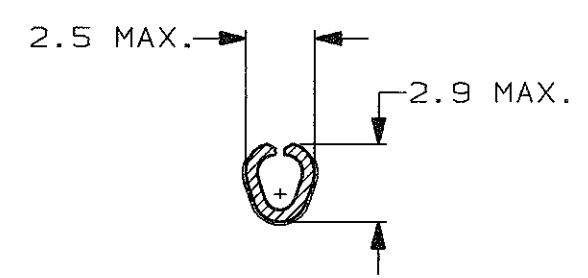
- 1) PER LE VERSIONI IN NASTRO  
VEDERE DISEGNO 160432.  
(FOR STRIP VERSION SEE DWG. 160432).
- 2) CONFEZIONATO IN ACCORDO ALLA  
SPECIFICA AMP 107-20201.  
(PACKAGED ACCORDING TO AMP SPEC. 107-20201).



**SEZIONE A-A**  
(SECTION A-A)

**SEZIONE B-B**  
(SECTION B-B)

INSULATION BARREL  
NO PREFORMING REQUIRED



STAGNATO (TIN PLATED)	BRONZO FOS. (PHOS. BRONZE)	5-160506-8	J
NUDO (UNPLATED)	BRONZO FOS. (PHOS. BRONZE)	5-160506-7	J
ARGENTATO (SILVER PLATED)	OTTONE (BRASS)	5-160506-5	J
PRE NICHELATO (PRE-NICKEL PL.)	ACCIAIO (STEEL)	5-160506-3	J
STAGNATO (TIN PLATED)	OTTONE (BRASS)	5-160506-2	J
NUDO (UNPLATED)	OTTONE (BRASS)	5-160506-1	J
FINITURA / COLORE (FINISH / COLOUR)	MATERIALE (MATERIAL)	NUMERO (PART NUMBER)	REV

**CUSTOMER DWG.**  
FOR REFERENCE ONLY

**DISEGNO PER CLIENTE**  
SOLO PER RIFERIMENTO

~~THIS DRAWING IS UNPUBLISHED~~ RELEASE FOR PUBLICATION

TOLLERANZE, SE NON DIVERSAMENTE SPECIFICATO (TOLERANCES, UNLESS OTHERWISE SPECIFIED)	DIAM. ISOLANTE (INS. DIA. RANGE)	RANGO FILO (WIRE RANGE)	SCALA (SCALE)
± 0.3	2.3-3.3	0.5-1.5	4:1
ANGOLI (ANGLES)	TE Connectivity		

DIS. H. YAALI  
(DR.) 17 OCT 2000

CONT. C. TARTARI  
(CHK) 17 OCT 2000

DESCRIZIONE  
(DESCRIPTION) FASTON® Connector,  
.250" sr. REC. CONTACT  
(LOOSE PIECE VERSION)

J1	REVISED PER ECO-11-005294	RK	09APR 11
REV. (REV. DATE)	REVISIONI (REVISION RECORD)	DIS. DATA (DR) (DATE)	APP. (APP.)

LOC. SIZE NUMERO  
(DWG NO) I A3 C-160506

REV. FOGLIO  
(SHEET) J1 1 DI 1

DISTRIBUZIONE  
(PRINT DIST.)

# Mouser Electronics

Authorized Distributor

Click to View Pricing, Inventory, Delivery & Lifecycle Information:

[TE Connectivity:](#)

[5-160506-8](#)