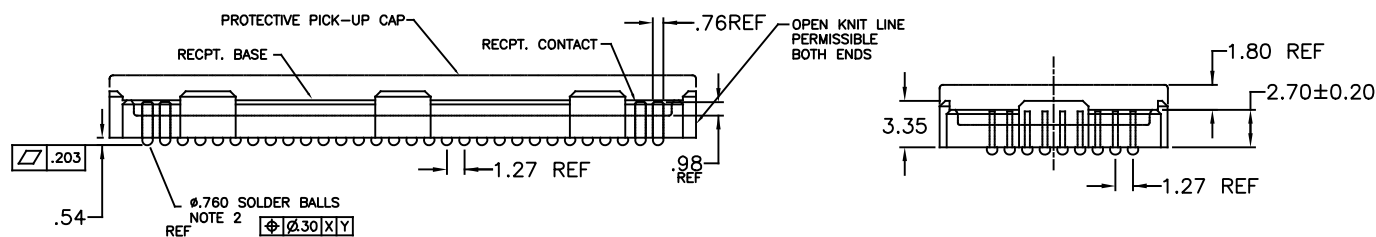
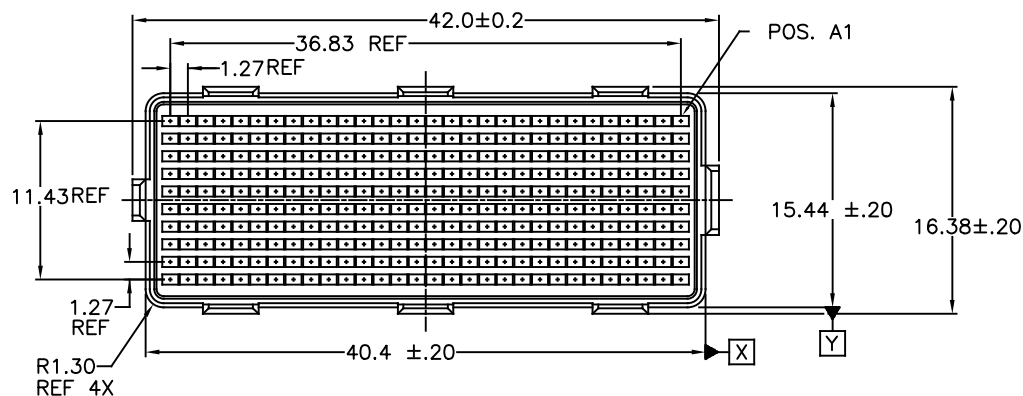
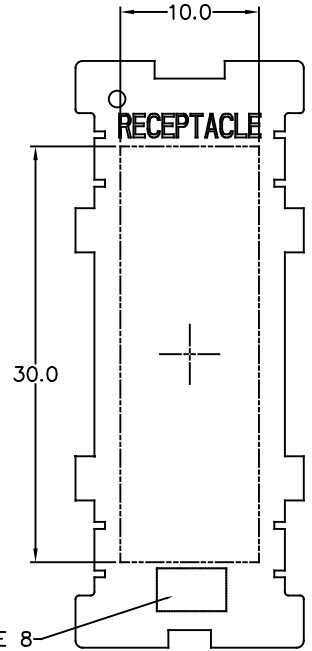


PRODUCT NUMBER
SEE TABLE



mat'l. code SEE-NOTE-1				surface ASMEY14.5		tolerance ASMEY14.5		projection MM		product family MEG-ARRAY				
ltr	ecn no	dr	date	tolerances unless otherwise specified						title 4MM-RECPTACLE-ASSEMBLY. 10X30=300-POS				
L	V11-0028	HTB	2011-06-02	angles	line	.X±.3		MM		dwg no 84501				
M	V-012333	RE	2012-07-30			.XX±.10								
N	V-13453-1	DCH	2012-11-14	0°±2°		.XXX±.050		scale 1:1		sheet 1 of 4 size A4				
P	V-13453-1	DCH	2015-12-08	dr	D.WAUGHEN		1998-12-18		Amphenol FCi		type CUSTOMER Drawing			
R	V-18087	DCH	2014-6-25	enr	D.HARPER		1998-12-18							
S	V-26025	RWB	2017-02-06	chr	D.HARPER		1998-12-18							
T	V-40495	HCL	2021-03-26	app	D.HARPER		1998-12-18							
sheet index	revision	T	T	T										
	sheet	1	2	3										

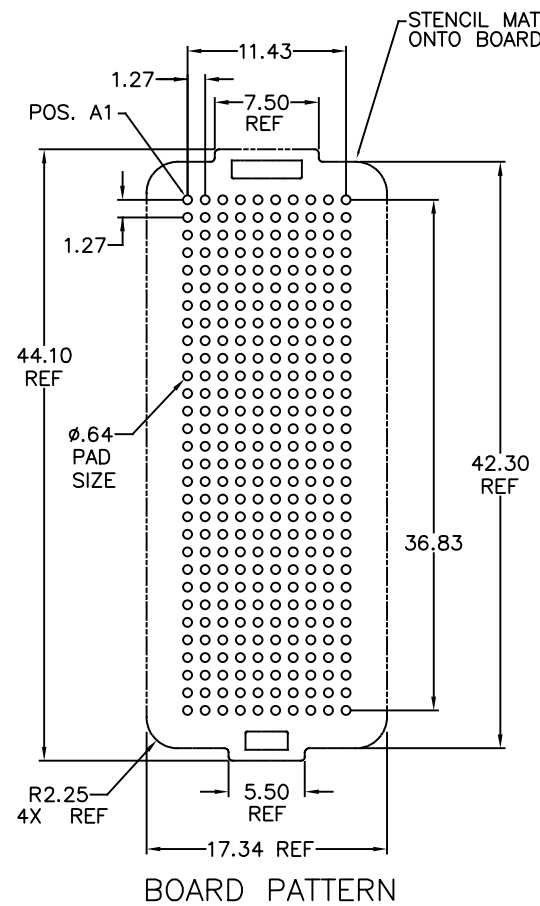
PRODUCT NUMBER
SEE TABLE



RECEPTACLE

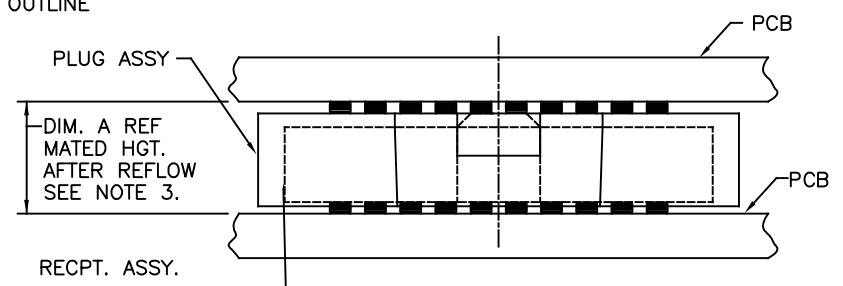
NOTE 8

FLAT AREA FOR PICK-UP CAP



BOARD PATTERN

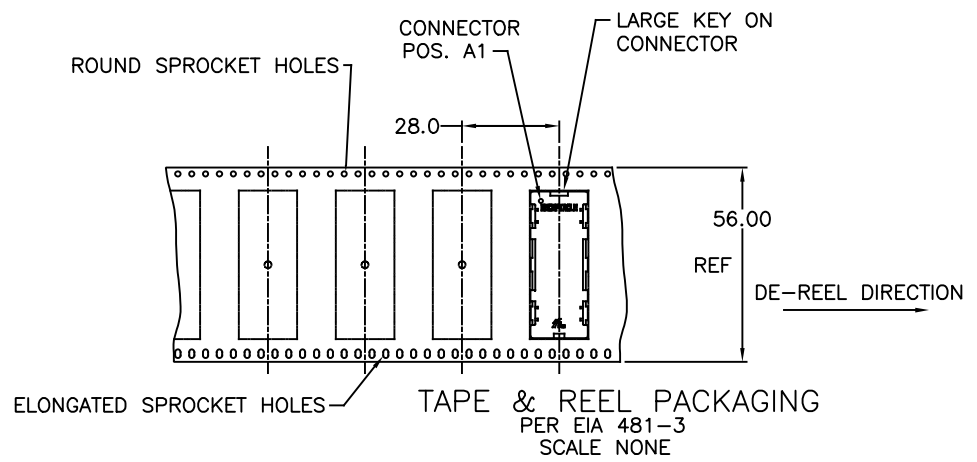
STENCIL MATED CONNECTOR OUTLINE ONTO BOARD.



MATED HEIGHT TABLE		
DIM. A	PLUG ASSY. P/N	RECPT. ASSY. P/N
4.0	84500	84501
10.0	84578	84501

MATED HEIGHT AFTER REFLOW IS BASED ON ϕ .64mm PAD (METAL-DEFINED) AND .13mm SOLDER PASTE STENCIL THICKNESS. SEE NOTE 3.

END VIEW - MATED CONNECTORS SCALE NONE




TAPE & REEL PACKAGING
PER EIA 481-3
SCALE NONE

mat'l. code SEE-NOTE-1		surface ASMEY14.5	tolerance ASMEY14.5	projection 	product family MEG-ARRAY
ltr	ecn no	dr	date	title 4MM-RECPTACLE-ASSEMBLY. 10X30=300-POS	
T				MM	
				scale 1:1	
		dr	D.WAUGHEN 1998-12-16	Amphenol FCI	dwg no
		enr	D.HARPER 1998-12-16		sheet 2 of 4
		chr	D.HARPER 1998-12-16		size
		app	D.HARPER 1998-12-16		A4
sheet index	revision sheet				type CUSTOMER Drawing

NOTES:

- ① MATERIAL
HOUSING: LCP
CONTACT: COPPER ALLOY

PLATING
CONTACT: (SEE TABLE ON SHEET3)
SOLDER BALL: (SEE TABLE ON SHEET3)
EUTECTIC SnPb OR LEAD FREE
95.5Sn/4Ag/0.5Cu
- ② SOLDER BALLS WILL NOT BE PERFECT SPHERICAL SHAPE DUE TO REFLOW ATTACHMENT.
- ③ MATED HEIGHT EFFECTED BY CUSTOMER'S PCB PAD SIZE, PLATING, SOLDER REFLOW PROFILE, & SOLDER PASTE.
- ④ PLATING FOR -2XX SERIES PRODUCT NUMBERS MEET THE REQUIREMENTS OF GR-1217-CORE, CENTRAL OFFICE ENVIRONMENT, (25 YEAR LIFE EXPECTANCY). THE CONTACTS IN THESE PRODUCT NUMBERS ALSO HAVE SPECIAL CONTACT GEOMETRY.
- ⑤ FOR PROPER APPLICATION FOLLOW FCI APPLICATION SPECIFICATION GS-20-033 LEAD FREE SOLDER BALLS WILL NOT SOLDER PROPERLY IN A LEADED SOLDER PROCESS DUE TO A HIGHER REFLOW TEMPERATURE. LEAD FREE PRODUCT IS THERFORE NOT BACKWARDS COMPATIBLE WITH LEADED OR SOME SOLDERING APPLICATIONS. REFERENCE FCI APPLICATION SPECIFICATION.
- ⑥ THIS PRODUCT MEETS EUROPEAN UNION DIRECTIVES AND OTHER COUNTRY REGULATIONS AS DESCRIBED IN GS-47-0004 PRODUCT MEETING THIS DIRECTIVE IS IDENTIFIED IN THE LOT CODE NUMBER MARKED ON EACH PART BY HAVING AN "X" IN THE SEVENTH CHARACTER POSITION.
- ⑦ 84501-A01 AND -A01LF ARE CUSTOMER SPECIALS.


- ⑧ CURRENT COMPANY LOGO TO BE VISIBLE IN APPROXIMATE AREA SHOWN.
- 9. 84501-301, -301LF, -401, -401LF, -501 and -501LF ARE OBSOLETE.
- 10. A  SYMBOL WILL BE NEXT TO ANY DIMENSION, NEW VIEW OR NOTE WHICH HAS BEEN MODIFIED WITH THE CURRENT DRAWING REVISION



⑪ 84501-093LF AND 84501-093BLF HAVE A SPECIAL CAP



⑫ FOR THESE DASH NUMBERS, PRODUCT IS BERYLLIUM FREE

mat'l. code SEE-NOTE-1		surface ASMEY14.5	tolerance ASMEY14.5	projection 	product family MEG-ARRAY
ltr	ecn no	dr	date	tolerances unless otherwise specified	title
T				angles .X±.3 .XX±.10 0°±2° lines .XXX±.050	4MM-RECTACLE-ASSEMBLY. 10X30=300-POS
		dr	D.WAUGHEN 1998-12-18	MM ←→ scale 1:1	dwg no sheet 4 of 4
		enr	D.HARPER 1998-12-18	Amphenol FCI	84501
		chr	D.HARPER 1998-12-18		A4
		app	D.HARPER 1998-12-18		type CUSTOMER Drawing
sheet index	revision sheet				

Mouser Electronics

Authorized Distributor

Click to View Pricing, Inventory, Delivery & Lifecycle Information:

[FCI / Amphenol:](#)

[84501-291LF](#)