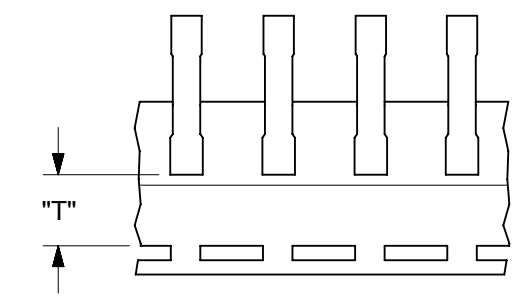
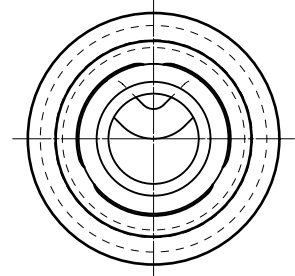
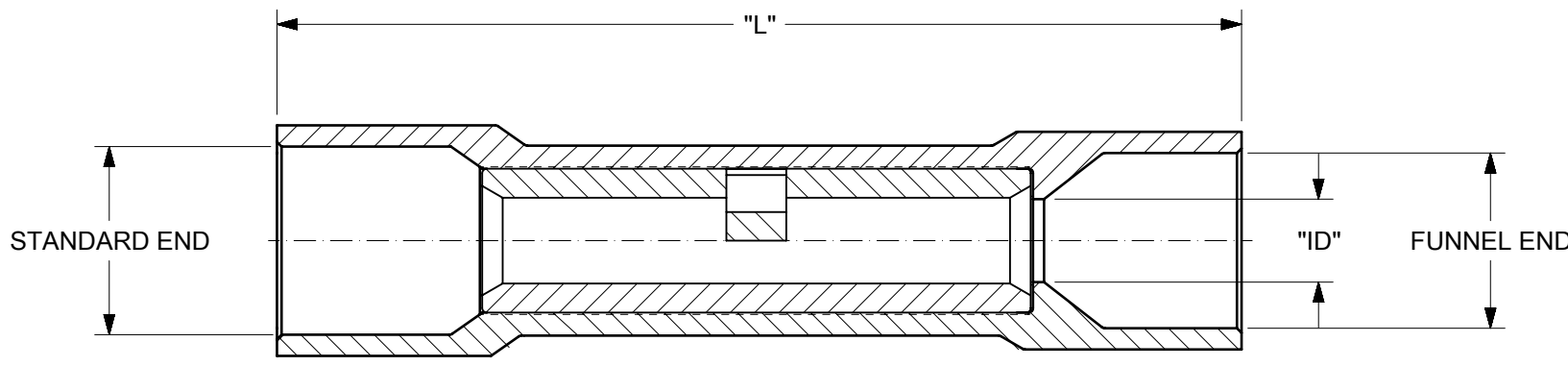


MATERIAL NUMBER	ALTERNATE NUMBER	WIRE SIZE AWG	INSULATION COLOR	CONNECTOR ID	MAX. WIRE INSUL. DIA.		LENGTH "L"	TAPE HEIGHT "T"	DESCRIPTION
					STANDARD END	FUNNEL END			
192020010	AS-932	22-18	LIGHT RED	.061 (1.55)	.161 (4.09)	.147 (3.73)	1.07 (27.18)	----	LOOSE PIECE
192020011	AS-932-DK	22-18	DARK RED	.061 (1.55)	.161 (4.09)	.147 (3.73)	1.07 (27.18)	----	LOOSE PIECE
192020012	AS-932-DKT	22-18	DARK RED	.061 (1.55)	.161 (4.09)	.147 (3.73)	1.07 (27.18)	.480 (12.19)	TAPE MOUNTED
192020026	BS-942	16-14	LIGHT BLUE	.087 (2.21)	.199 (5.05)	.185 (4.70)	1.07 (27.18)	----	LOOSE PIECE
192020030	BS-942T	16-14	LIGHT BLUE	.087 (2.21)	.199 (5.05)	.185 (4.70)	1.07 (27.18)	.480 (12.19)	TAPE MOUNTED
192020027	BS-942-DK	16-14	DARK BLUE	.087 (2.21)	.199 (5.05)	.185 (4.70)	1.07 (27.18)	----	LOOSE PIECE
192020029	BS-942-DKT	16-14	DARK BLUE	.087 (2.21)	.199 (5.05)	.185 (4.70)	1.07 (27.18)	.480 (12.19)	TAPE MOUNTED
192020028	BS-942-DKBT	16-14	DARK BLUE	.087 (2.21)	.199 (5.05)	.185 (4.70)	1.07 (27.18)	.480 (12.19)	TAPE MOUNTED LARGE REEL
192020131	BS-942-B	16-14	BLUE	.087 (2.21)	.199 (5.05)	.185 (4.70)	1.07 (27.18)	----	LOOSE PIECE
192020130	BS-942-BBT	16-14	BLUE	.087 (2.21)	.199 (5.05)	.185 (4.70)	1.07 (27.18)	.480 (12.19)	TAPE MOUNTED LARGE REEL
192020045	CS-952	12-10	YELLOW	.138 (3.51)	.276 (7.01)	.262 (6.65)	1.15 (29.21)	----	LOOSE PIECE
192020046	CS-952-DK	12-10	DARK YELLOW	.138 (3.51)	.276 (7.01)	.262 (6.65)	1.15 (29.21)	----	LOOSE PIECE
192020047	CS-952-DKT	12-10	DARK YELLOW	.138 (3.51)	.276 (7.01)	.262 (6.65)	1.15 (29.21)	.440 (11.18)	TAPE MOUNTED
192020048	CS-952-DKBT	12-10	DARK YELLOW	.138 (3.51)	.276 (7.01)	.262 (6.65)	1.15 (29.21)	.440 (11.18)	TAPE MOUNTED LARGE REEL
192020141	CS-952 BULK	12-10	YELLOW	.138 (3.51)	.276 (7.01)	.262 (6.65)	1.15 (29.21)	----	BULK PACKED, 2500 PER PACKAGE
192020142	CS-952 -DK BULK	12-10	DARK YELLOW	.138 (3.51)	.276 (7.01)	.262 (6.65)	1.15 (29.21)	----	BULK PACKED, 2500 PER PACKAGE



PARTS ON TAPE

- NOTE(S):
1. MATERIAL: COPPER
 2. PLATING: ELECTRO-TIN
 3. INSULATION: 6/6 NYLON
 4. PARTS ARE ROHS COMPLIANT.

SYMBOLS	THIS DRAWING CONTAINS INFORMATION THAT IS PROPRIETARY TO MOLEX ELECTRONIC TECHNOLOGIES, LLC AND SHOULD NOT BE USED WITHOUT WRITTEN PERMISSION		
	DIMENSION UNITS	SCALE	
▽ = 0	IN/MM	NTS	
▽ = 0	GENERAL TOLERANCES (UNLESS SPECIFIED)		
▽ = 0		MM	INCH
▽ = 0	4 PLACES ±		
▽ = 0	3 PLACES ±		± 0.005
▽ = 0	2 PLACES ±	0.13	± 0.01
▽ = 0	1 PLACE ±	0.25	
▽ = 0	0 PLACES ±		
□ = 0	ANGULAR TOL ± 0.5°		
■ = 0	DRAFT WHERE APPLICABLE MUST REMAIN WITHIN DIMENSIONS		
▽ = 0	THIRD ANGLE PROJECTION	DRAWING	SERIES
		B-SIZE	19202
	CURRENT REV DESC: MIGRATE TO NX & UPDATE VIEW		
	EC NO: 629174	DRWN: DMYRICK	2019/12/04
	CHK'D: DMYRICK	APPR: GROJAS01	2019/12/17
	INITIAL REVISION:	DRWN: HBEITZEL	2000/07/18
	APPR: RDEROSS	APPR: RDEROSS	2000/07/18
	PRODUCT CUSTOMER DRAWING		
	DOCUMENT NUMBER	DOC TYPE	DOC PART
	SD-19202-001	PSD	001
	REVISION		
	A2		
	MATERIAL NUMBER	CUSTOMER	SHEET NUMBER
	SEE CHART	GENERAL MARKET	1 OF 1

Mouser Electronics

Authorized Distributor

Click to View Pricing, Inventory, Delivery & Lifecycle Information:

[Molex:](#)

[19202-0011](#)