



*Quality Products. Service Excellence.*

## Horizontal Hinged Cable Manager *PCMDD Series*

### Features:



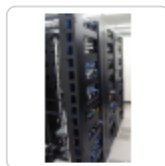
- Constructed in 16-gauge steel.
- Continuous hinged door with magnetic closure strip.
- Four oblong openings (3.5" x 1.56") top & bottom - allowing for cable exit top and/or bottom.
- Openings in the rear for cable entry.
- Designed to fit standard 19" rails.
- Finished in textured black powder paint.
- Requires mounting hardware.
- RoHS and REACH compliant.
- Manufactured in North America.



Check out our new RB-HFMD Series of Hinged Horizontal Managers

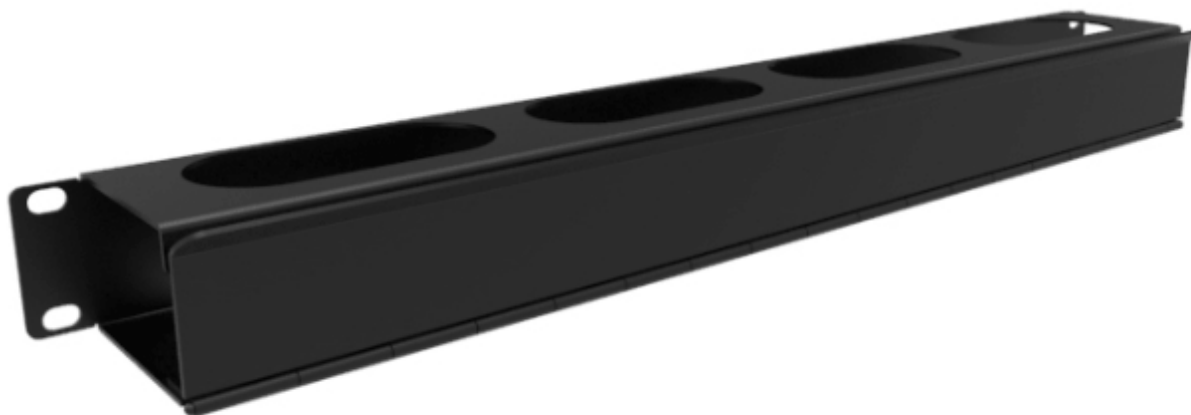


### Gallery



### Accessories

- Mounting Hardware



Part No.	Height	Overall Dimensions		Rack Units	Usable Dimensions		
		Width	Depth		Height	Width	Depth
PCMDD19001BK1	1.72	19.00	2.71	1U	1.25	17.62	2.50

Part No.	Overall Dimensions			Rack Units	Usable Dimensions		
	Height	Width	Depth		Height	Width	Depth
PCMDD19003BK1	3.47	19.00	2.71	2U	3.00	17.62	2.50
PCMDD19005BK1	5.22	19.00	2.71	3U	4.75	17.62	2.50

### Estimated Cable Fill Capacities

Rack Units	Description	Opening Quantity	Recommended Cable Fill (50% Fill Ratio)		Maximum Cable Fill (100% Fill Ratio)	
			Cat 5e	Cat 6a	Cat 5e	Cat 6a
1U	Channel Opening	1	34	15	68	30
	Top/Bottom Opening	2 x 4 = 8	43	19	86	38
	Rear Pass Through	0	n/a	n/a	n/a	n/a
2U	Channel Opening	1	68	30	137	61
	Top/Bottom Opening	2 x 4 = 8	43	19	86	38
	Rear Pass Through	4	32	14	64	28
3U	Channel Opening	1	103	46	207	92
	Top/Bottom Opening	2 x 4 = 8	43	19	86	38
	Rear Pass Through	4	32	14	64	28

Cable fill capacity will vary based on the cable manufacturer.

*Data subject to change without notice*

© 2020. Hammond Manufacturing Ltd. All rights reserved.

# Mouser Electronics

Authorized Distributor

Click to View Pricing, Inventory, Delivery & Lifecycle Information:

Hammond:

[PCMDD19001BK1](#) [PCMDD19005BK1](#) [PCMDD19003BK1](#)