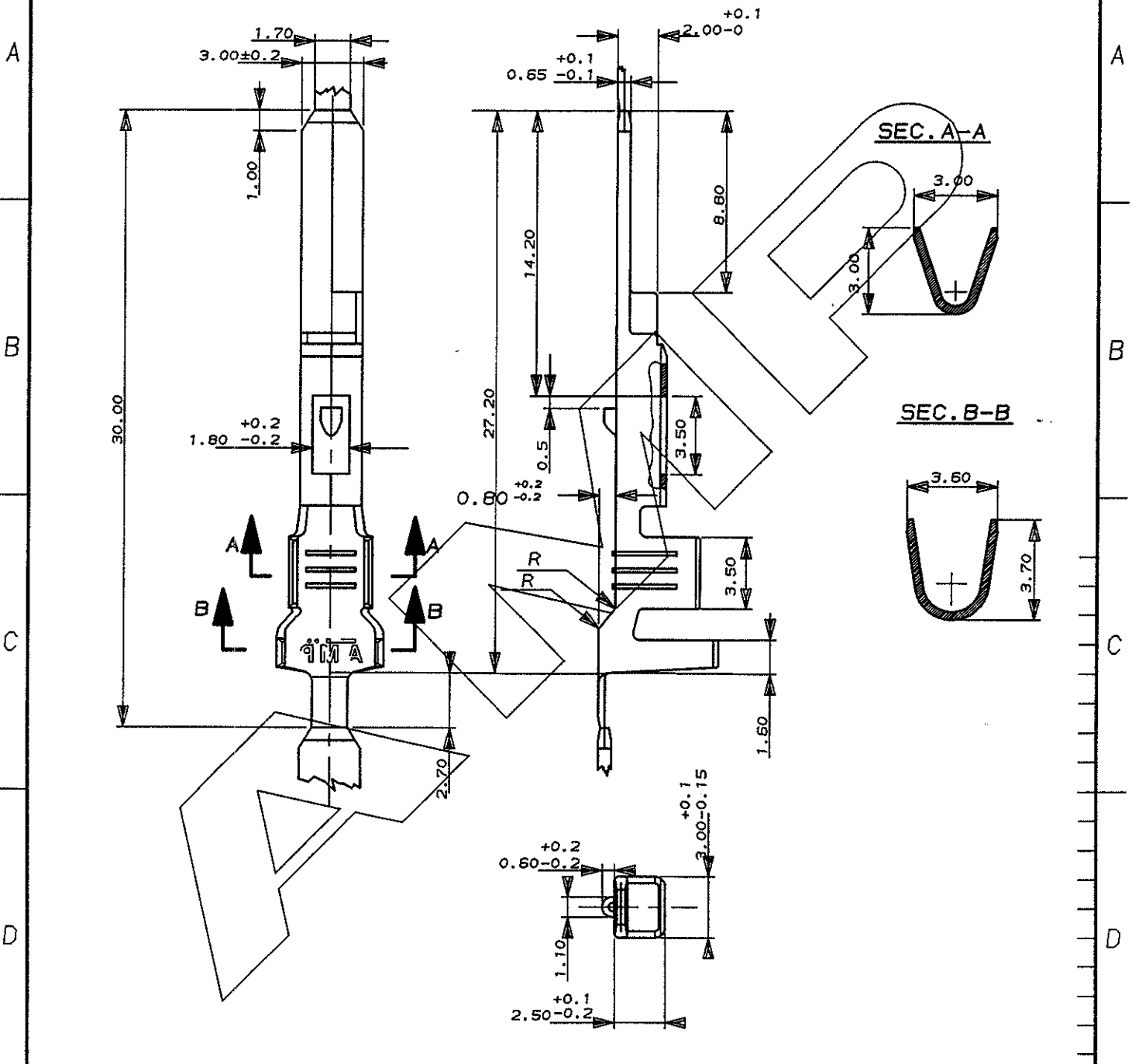


SCALA NON IMPEGNATIVA  
(DO NOT SCALE)  
DIMENSIONI IN mm  
(DIMENSIONS IN)

METRIC

PROIEZIONE EUROPEA  
(EUROPEAN PROJECTION)



Pre-stagnato (Pre-Tin)	OTTONE (Brass)	281937-1
FINITURA / COLORE (FINISH / COLOUR)	MATERIALE (MATERIAL)	NUMERO (PART NUMBER)

CUSTOMER DWG. FOR REFERENCE ONLY      DISEGNO PER CLIENTE SOLO PER RIFERIMENTO

THIS DRAWING IS UNPUBLISHED      RELEASE FOR PUBLICATION      19

© COPYRIGHT 19 BY AMP INCORPORATED, HARRISBURG, PA. ALL INTERNATIONAL RIGHT RESERVED. AMP PRODUCTS MAY BE COVERED BY U.S. AND FOREIGN PATENT AND/OR PATENT PENDING

TOLLERANZE: SE NON DIVERSAMENTE SPECIFICATO (TOLERANCES: UNLESS OTHERWISE SPECIFIED)	DIAH. ISOLANTE (INS. DIA. RANGE)	RANGO FILO (WIRE RANGE)	SCALA (SCALE)
± 0.3	1.5-2.4 mm	(0.5)(0.5+0.5) (1.0)(1.5)	NO

ANGOLI (ANGLES): ± 2°

**AMP** AMP ITALIA S.p.A.  
Corso F.lli Cervi, 15  
COLLEGNO (TORINO)

DIS. C. BERTINI (DR.)      DESCRIZIONE (DESCRIPTION)      TAB MIC MK II

REV.      REVISIONI (REVISION RECORD)      DIS. DATA (DR. DATE)      APP. (APP.)

LOC.	SIZE	NUMERO (DWG NO)	REV.	FOGLIO (SHEET)
IA4	C-	281937	B11	01 (OF) 2

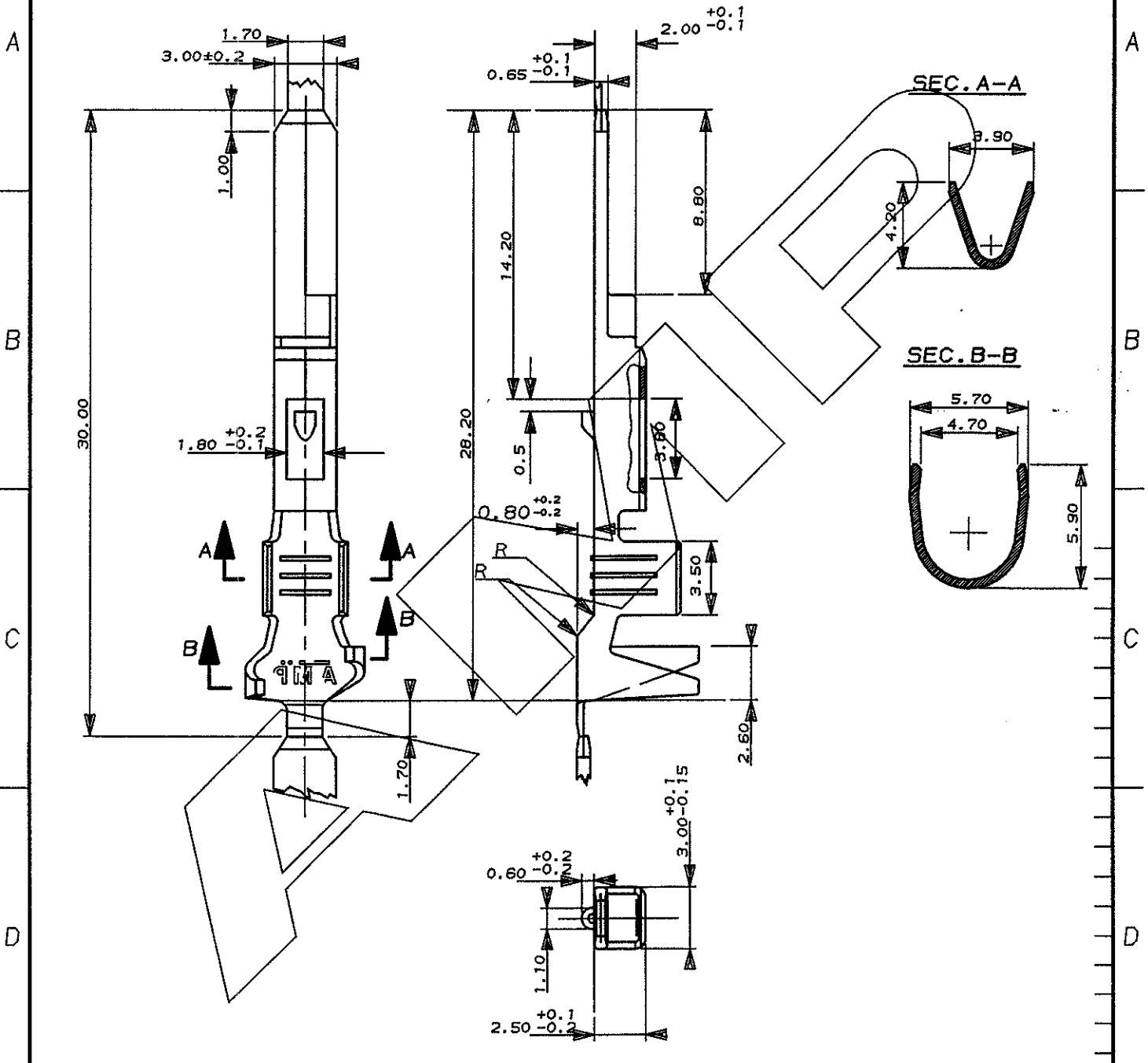
DISTRIBUZIONE (PRINT DIST.)

B1	REVISED FOR ET00-0072-98	DIS. DATA (DR. DATE)	APP. (APP.)
B	MODIFICATO	DIS. DATA (DR. DATE)	APP. (APP.)
A	MODIFICATO DIAMETRO ISOLANTE	DIS. DATA (DR. DATE)	APP. (APP.)
REV.	REVISIONI (REVISION RECORD)	DIS. DATA (DR. DATE)	APP. (APP.)

SCALA NON IMPEGNATIVA  
(DO NOT SCALE)  
DIMENSIONI IN mm  
(DIMENSIONS IN)

METRIC

PROIEZIONE EUROPEA  
(EUROPEAN PROJECTION)



Pre-stagnato (Pre-Tin)	OTTONE (Brass)	281937-3
FINITURA / COLORE (FINISH / COLOUR)	MATERIALE (MATERIAL)	NUMERO NO

CUSTOMER DWG.  
FOR REFERENCE ONLY

DISEGNO PER CLIENTE  
SOLO PER RIFERIMENTO

THIS DRAWING IS UNPUBLISHED RELEASE FOR PUBLICATION 19

© COPYRIGHT 19 BY AMP INCORPORATED, HARRISBURG, PA. ALL INTERNATIONAL RIGHT RESERVED. AMP PRODUCTS MAY BE COVERED BY U.S. AND FOREIGN PATENT AND/OR PATENT PENDING

TOLLERANZE, SE NON DIVERSAMENTE SPECIFICATO (TOLERANCES, UNLESS OTHERWISE SPECIFIED)	DIAM. ISOLANTE (INS. DIA. RANGE) 2.8-4.0	RANGO FILO (WIRE RANGE) (1.0+1.0) (2.5) (0.5+1.0)	SCALA (SCALE) NO
---	--	--	------------------------

ANGOLI  
(ANGLES)  
± 0.3  
± 2°

**AMP**

AMP ITALIA S.p.A.  
Corso F.lli Cervi, 15  
COLLEGNO (TORINO)

DIS. C. PERTINI (DR.) 4/88 DESCRIZIONE (DESCRIPTION) TAB MIC MK II

CONT. (CHK) -

REV. (REV.)	REVISIONI (REVISION RECORD)	DIS. DATA (DR) (DATE)	APP. (APP.)	LOC. SIZE (LOC) (SIZE)	NUMERO (COWS NO)	REV.	FOGLIO (SHEET)
				I A4	C-281937		2 DI (2 OF)

DISTRIBUZIONE (PRINT DIST.)

VEDI FOGLIO 1 DI 2

# Mouser Electronics

Authorized Distributor

Click to View Pricing, Inventory, Delivery & Lifecycle Information:

[TE Connectivity:](#)

[281937-1](#)