

CMOS

Voltage Controlled Crystal Oscillator

CVHD-037X Model 5x7 mm SMD, 3.3V, CMOS

Frequency Range:	30.000 to 170.000 MHz
Operating Temperature Range:	-40°C to 85°C
Storage Temperature Range:	-45°C to 90°C
Input Voltage:	3.3V ± 5%
Control Voltage:	1.65V ± 1.65V
Input Current:	15mA Max
Output:	CMOS
Symmetry:	45/55% Max @ 50% Vdd
Rise/Fall Time:	3ns Max @ 10% to 90%
Pullability APR:	±50ppm Min
Linearity:	10%
Load:	15pF Max
Logic "1" Level:	0.9×Vdd Min
Logic "0" Level:	0.1×Vdd Max
Input Impedance:	5-10 MΩ
Enable Delay Time:	2ms Max
Disable Delay Time:	200ns Max
Phase Noise (Typical):	
10 Hz Offset:	-75 dBc/Hz
100 Hz Offset:	-100 dBc/Hz
1 kHz Offset:	-130 dBc/Hz
10 kHz Offset:	-145 dBc/Hz
100 kHz Offset:	-155 dBc/Hz
1 MHz Offset:	-160 dBc/Hz
10 MHz Offset:	-160 dBc/Hz



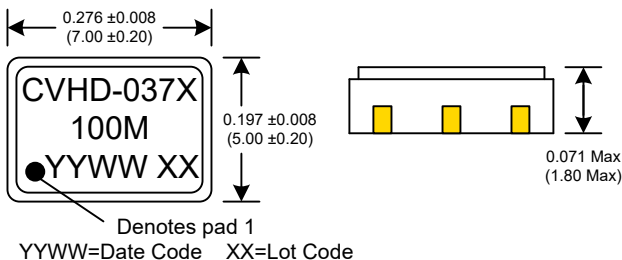
Standard Frequencies (MHz)
80.000
100.000
122.880
125.000

Mechanical:	
Shock:	MIL-STD-883, Method 2002, Condition B
Solderability:	MIL-STD-883, Method 2003
Vibration:	MIL-STD-883, Method 2007, Condition A
Solvent Resistance:	MIL-STD-202, Method 215
Resistance to Soldering Heat:	MIL-STD-202, Method 210, Condition I or J
Environmental:	
Thermal Shock:	MIL-STD-883, Method 1011, Condition A
Moisture Resistance:	MIL-STD-883, Method 1004

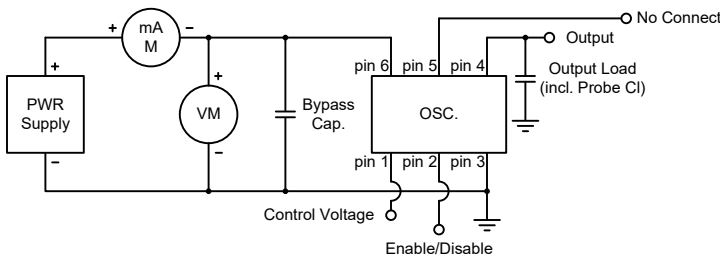
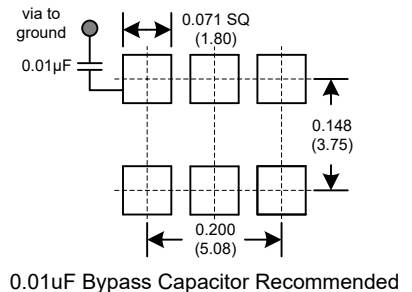
Part Number Example: CVHD-037X-100.000 = 3.3V, ±50ppm APR, 100 MHz

Dimensions inches (mm)

All dimensions are Max unless otherwise specified.



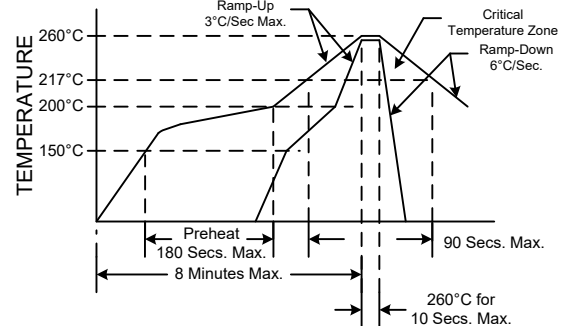
SUGGESTED PAD LAYOUT



PIN	Connection
1	Cont. Volt
2	E/D
3	GND
4	Output
5	NC
6	Vcc

Enable/Disable	
Function pin 2	Output pin
Open	Active
"1" level 0.7×Vdd Min	Active
"0" level 0.3×Vdd Max	High Z

RECOMMENDED REFLOW SOLDERING PROFILE



NOTE: Reflow Profile with 240°C peak also acceptable.

Available on 16mm Tape and Reel in quantities of 1,000 pcs.

Rev: H
Date: 18-Dec-2019
Page 1 of 1

Crystek Corporation reserves the right to make changes to its products and/or information contained herein without notice. No liability is assumed as a result of its use or application.

Mouser Electronics

Authorized Distributor

Click to View Pricing, Inventory, Delivery & Lifecycle Information:

[Crystek:](#)

[CVHD-037X-80](#) [CVHD-037X-100](#) [CVHD-037X-122.88](#) [CVHD-037X-125](#)