

(1.27 mm) .050"

# HIGH-SPEED/HIGH-DENSITY OPEN-PIN-FIELD

## SPECIFICATIONS

For complete specifications and recommended PCB layouts see [www.samtec.com?SEAM](http://www.samtec.com?SEAM)

- Insulator Material:** Black LCP
- Contact Material:** Copper Alloy
- Operating Temp Range:** -55 °C to +125 °C
- Current Rating (7 mm stack height):** 2.7 A per pin (10 adjacent pins powered)
- Plating:** Au or Sn over 50 μ" (1.27 μm) Ni
- Working Voltage:** 240 VAC
- RoHS Compliant:** Yes (-2 Solder type only)
- Lead-Free Solderable:** Yes

## RECOGNITIONS

For complete scope of recognitions see [www.samtec.com/quality](http://www.samtec.com/quality)



## STANDARDS

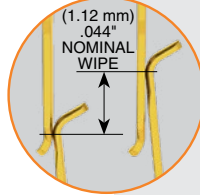
- VITA 47
- VITA 57.1 FMC
- VITA 57.4 FMC+
- VITA 74 VNX
- PISMO™ 2

Visit [www.samtec.com/standards](http://www.samtec.com/standards) for more information.

MATED HEIGHTS				
SEAM LEAD STYLE	SEAF LEAD STYLE			
	-05.0	-06.0	-06.5	-07.5
-02.0	7 mm	8 mm	8.5 mm	9.5 mm
-03.0	8 mm	9 mm	9.5 mm	10.5 mm
-03.5	8.5 mm	9.5 mm	10 mm	11 mm
-06.5	11.5 mm	12.5 mm	13 mm	14 mm
-07.0	12 mm	13 mm	13.5 mm	14.5 mm
-09.0	14 mm	15 mm	15.5 mm	16.5 mm
-11.0	16 mm	17 mm	17.5 mm	18.5 mm

**Notes:**  
Patented IPC-A-610F and IPC J-STD-001F Class 3 solder joint. Some sizes, styles and options are non-standard, non-returnable.

**Mates with:** SEAF, SEAFP  
**Standoffs:** JSO



Up to 500 Pins

Low insertion/extraction forces



Solder charges

## HIGH-SPEED CHANNEL PERFORMANCE

SEAF/SEAM @ 10 mm Mated Stack Height  
Rating based on Samtec reference channel. For full SI performance data visit [Samtec.com](http://Samtec.com) or contact [SIG@samtec.com](mailto:SIG@samtec.com)

PAM 4  
**56**  
G b p s

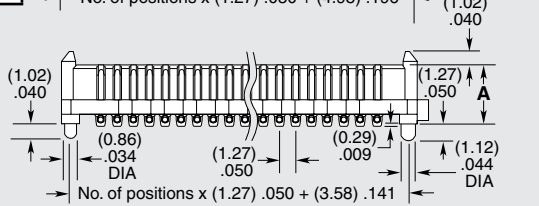
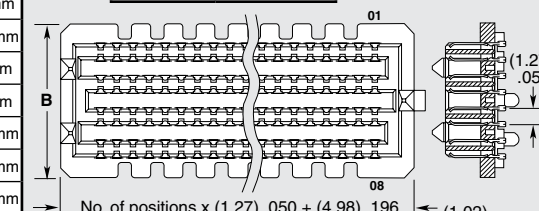
## OTHER SOLUTIONS

- Up to 560 pins

<b>SEAM</b>	<b>NO. PINS PER ROW</b>	<b>LEAD STYLE</b>	<b>PLATING OPTION</b>	<b>NO. OF ROWS</b>	<b>SOLDER TYPE</b>	<b>A</b>	<b>K</b>	<b>TR</b>
		Specify LEAD STYLE from chart	<ul style="list-style-type: none"> <li><b>-L</b> = 10 μ" (0.25 μm) Gold on contact area, Matte Tin on solder tail</li> <li><b>-S</b> = 30 μ" (0.76 μm) Gold on contact area, Matte Tin on solder tail</li> </ul>	<ul style="list-style-type: none"> <li><b>-04</b> = Four Rows (-06.5 not available)</li> <li><b>-05</b> = Five Rows (-06.5 not available)</li> <li><b>-06</b> = Six Rows (-06.5 not available)</li> <li><b>-08</b> = Eight Rows</li> <li><b>-10</b> = Ten Rows</li> </ul>	<ul style="list-style-type: none"> <li><b>-1</b> = Tin/Lead Alloy Solder Charge</li> <li><b>-2</b> = Lead-Free Solder Charge</li> </ul>	<b>-A</b> = Alignment Pins (Required. Arrays will not self-center on solder pads)	<b>-K</b> = Polyimide film Pick & Place Pad	<b>-TR</b> = Tape & Reel

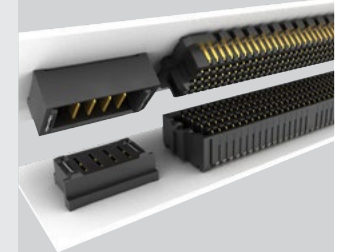
**-10, -15, -20, -30, -40, -50**  
(-10 only available in 04 row)  
(-15 is only available in 4 Row with -02.0 lead style and 10 row with any lead style)

NO. OF ROWS	B
-04	(7.06) .278
-05, -06	(9.60) .378
-08	(12.14) .478
-10	(14.68) .578



LEAD STYLE	A
-02.0	(4.60) .181
-03.0	(5.59) .220
-03.5	(6.10) .240
-06.5	(9.14) .360
-07.0	(9.60) .378
-09.0	(11.60) .457
-11.0	(13.60) .535

## POWER/SIGNAL APPLICATION



Compatible with UMPT/UMPS for flexible two-piece power/signal solutions

# Mouser Electronics

Authorized Distributor

Click to View Pricing, Inventory, Delivery & Lifecycle Information:

## Samtec:

[SEAM-20-03.5-S-10-2-A-K-TR](#) [SEAM-30-02.0-S-06-2-A-K-TR](#) [SEAM-50-02.0-S-08-2-A-K-TR](#) [SEAM-20-03.5-S-08-2-A-K-TR](#) [SEAM-20-07.0-S-08-2-A-K-TR](#) [SEAM-50-02.0-L-10-2-A-K-TR](#) [SEAM-50-01-L-06-2-RA-GP-TR](#) [SEAM-50-02.0-L-10-2-A-GP-K-TR](#) [SEAM-20-11.0-S-06-2-A-K-TR](#) [SEAM-30-02.0-L-06-2-A-K-TR](#) [SEAM-50-11.0-S-06-2-A-K-TR](#) [SEAM-40-06.5-S-10-1-A-K-TR](#) [SEAM-40-02.0-S-04-2-A-K-TR](#) [SEAM-30-02.0-L-04-2-A-K-TR](#) [SEAM-40-07.0-S-10-2-A-K-TR](#) [SEAM-50-02.0-S-04-1-A-GP-K-TR](#) [SEAM-20-02.0-L-08-2-A-K-TR](#) [SEAM-40-11.0-L-10-1-A-K-TR](#) [SEAM-50-02.0-L-04-2-A-GP-K-TR](#) [SEAM-50-03.0-S-08-2-A-K-TR](#) [SEAM-30-02.0-S-08-2-A-K-TR](#) [SEAM-40-02.0-L-04-2-A-K-TR](#) [SEAM-20-01-L-06-2-RA-K-TR](#) [SEAM-40-02.0-L-04-2-A-GP-K-TR](#) [SEAM-20-02.0-L-04-2-A-GP-K-TR](#) [SEAM-30-02.0-L-04-2-A-GP-K-TR](#) [SEAM-50-02.0-S-10-2-A-K-TR](#) [SEAM-30-11.0-L-06-2-A-K-TR](#) [SEAM-20-11.0-S-08-2-A-K-TR](#) [SEAM-20-02.0-S-04-2-A-K-TR](#) [SEAM-10-03.5-L-04-2-A-K-TR](#) [SEAM-40-03.0-L-10-2-A-K-TR](#) [SEAM-40-06.5-L-10-2-A-K-TR](#) [SEAM-40-03.5-L-10-2-A-K-TR](#) [SEAM-20-02.0-S-06-2-A-K-TR](#) [SEAM-20-02.0-L-04-2-A-K-TR](#) [SEAM-30-03.5-S-10-2-A-K-TR](#) [SEAM-40-02.0-L-06-2-A-GP-K-TR](#) [SEAM-40-09.0-S-10-2-A-K-TR](#) [SEAM-20-03.0-S-08-2-A-K-TR](#) [SEAM-40-11.0-S-10-1-A-K-TR](#) [SEAM-30-03.5-S-06-2-A-K-TR](#) [SEAM-40-02.0-S-10-2-A-GP-K-TR](#) [SEAM-50-11.0-S-10-2-A-K-TR](#) [SEAM-40-02.0-L-06-2-A-K-TR](#) [SEAM-40-02.0-L-10-1-A-K-TR](#) [SEAM-40-11.0-S-08-2-A-K-TR](#) [SEAM-20-11.0-L-10-2-A-K-TR](#) [SEAM-30-02.0-S-08-1-A-K-TR](#) [SEAM-20-03.5-S-06-2-A-K-TR](#) [SEAM-40-02.0-S-10-2-A-K-TR](#) [SEAM-20-01-S-08-2-RA-K-TR](#) [SEAM-30-03.5-S-04-2-A-K-TR](#) [SEAM-40-03.5-S-06-2-A-K-TR](#) [SEAM-20-02.0-S-10-1-A-K-TR](#) [SEAM-30-02.0-L-08-2-A-K-TR](#) [SEAM-30-11.0-S-04-2-A-K-TR](#) [SEAM-50-02.0-S-08-1-A-K-TR](#) [SEAM-40-01-L-08-1-RA-TR](#) [SEAM-40-11.0-L-10-2-A-K-TR](#) [SEAM-40-01-S-10-2-RA-K-TR](#) [SEAM-20-02.0-S-04-1-A-K-TR](#) [SEAM-30-03.5-L-08-2-A-K-TR](#) [SEAM-30-02.0-S-06-1-A-K-TR](#) [SEAM-40-03.5-S-08-2-A-K-TR](#) [SEAM-40-06.5-S-10-2-A-K-TR](#) [SEAM-20-03.5-L-08-2-A-K-TR](#) [SEAM-40-11.0-L-06-2-A-K-TR](#) [SEAM-30-11.0-S-10-2-A-K-TR](#) [SEAM-30-03.0-S-06-2-A-K-TR](#) [SEAM-50-02.0-L-08-1-A-K-TR](#) [SEAM-10-02.0-S-04-1-A-K-TR](#) [SEAM-20-07.0-S-04-2-A-K-TR](#) [SEAM-20-11.0-S-10-2-A-K-TR](#) [SEAM-50-02.0-L-06-2-A-GP-K-TR](#) [SEAM-20-02.0-L-06-2-A-K-TR](#) [SEAM-10-02.0-L-04-1-A-K-TR](#) [SEAM-50-02.0-S-04-2-A-K-TR](#) [SEAM-40-03.0-S-04-2-A-K-TR](#) [SEAM-20-03.0-S-04-2-A-K-TR](#) [SEAM-50-11.0-S-08-2-A-K-TR](#) [SEAM-40-01-L-10-2-RA-K-TR](#) [SEAM-30-02.0-S-04-2-A-K-TR](#) [SEAM-40-02.0-S-08-2-A-K-TR](#) [SEAM-30-03.5-L-06-2-A-K-TR](#) [SEAM-30-07.0-S-08-2-A-K-TR](#) [SEAM-50-03.5-S-08-2-A-K-TR](#) [SEAM-40-03.0-S-06-2-A-K-TR](#) [SEAM-20-11.0-L-04-2-A-K-TR](#) [SEAM-20-02.0-S-08-2-A-K-TR](#) [SEAM-40-11.0-S-06-2-A-K-TR](#) [SEAM-40-02.0-L-10-2-A-K-TR](#) [SEAM-30-03.5-S-08-2-A-K-TR](#) [SEAM-30-03.5-L-04-2-A-K-TR](#) [SEAM-50-02.0-L-08-2-A-K-TR](#) [SEAM-30-02.0-S-10-2-A-K-TR](#) [SEAM-40-02.0-L-10-2-A-GP-K-TR](#) [SEAM-40-02.0-S-08-1-A-K-TR](#) [SEAM-50-11.0-L-10-2-A-K-TR](#) [SEAM-50-02.0-L-06-2-A-K-TR](#)