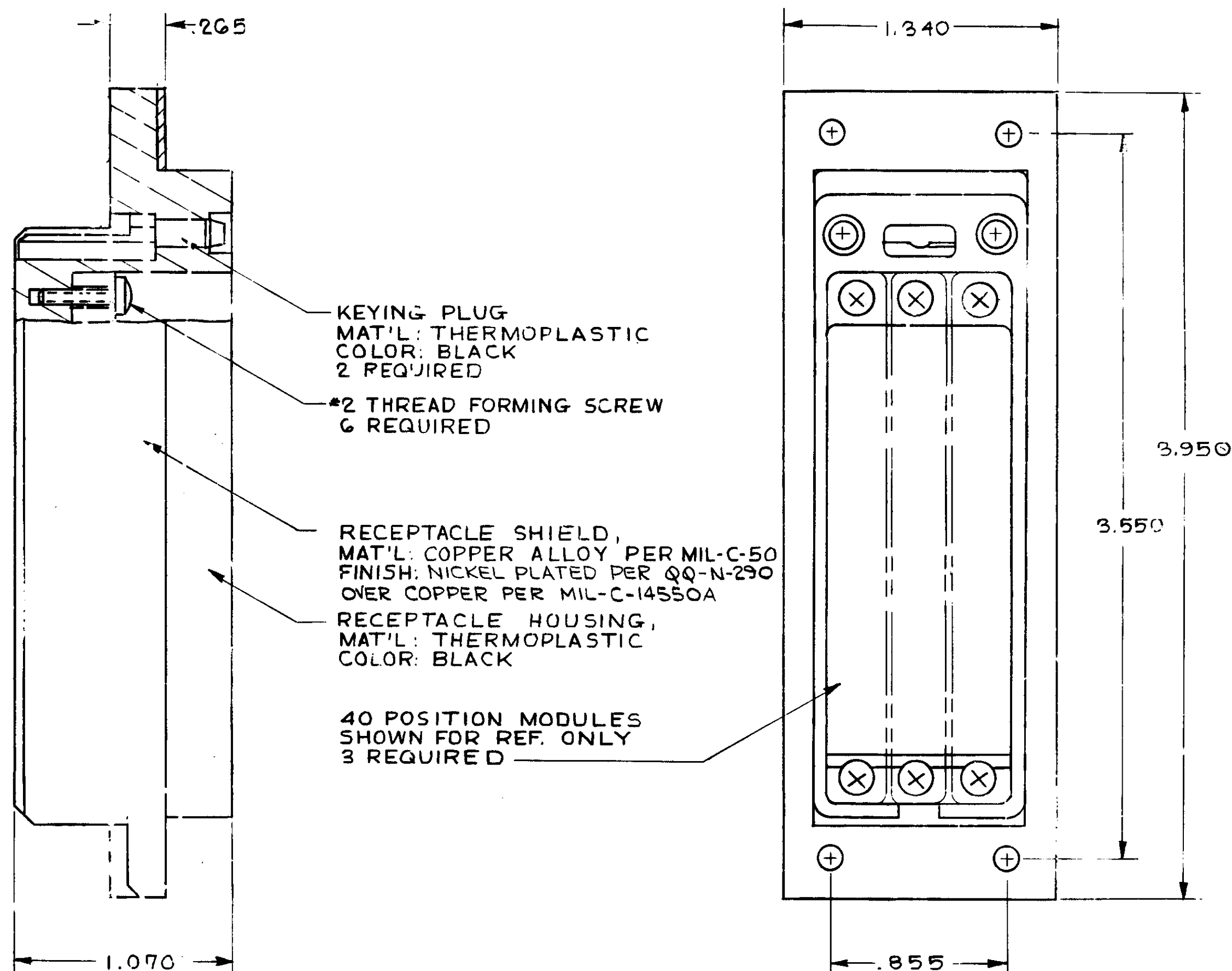


THIS DRAWING IS UNPUBLISHED. RELEASED FOR PUBLICATION, 19
© COPYRIGHT 19 BY AMP INCORPORATED, HARRISBURG, PA. ALL INTERNATIONAL RIGHTS
RESERVED. AMP PRODUCTS MAY BE COVERED BY U.S. AND FOREIGN PATENTS AND/OR PATENTS PENDING.

REVISIONS					
P	F	ZONE	LTR	DESCRIPTION	DATE
✓			C	RELEASED WAS 5088-451	2783
✓			A	REVISED PER ECN K-220	9/31/83
✓			B	ADDED -2 / ECN R-2529	12-3-86



1. PARTS PACKAGED UNASSEMBLED.

AS SHOWN EXCEPT ALT. KEYING	211686-2
AS SHOWN	211636-1
DESCRIPTION	PART NO

UNLESS OTHERWISE SPECIFIED DIMENSIONS ARE IN INCHES. TOLERANCES ON: DECIMALS ±.010 ANGLES #	CONTRACT NO DR <i>D. Endman</i> 7-7-82 CHKD <i>Larry J. Lawner</i> 2-9-83 APPD <i>David Smith</i> 2-10-83 APPD <i>R. Smith</i> 2-10-83 ESGN APPD OTHER APPD	NAME AMP INCORPORATED Harrisburg, Pa. 17105 RECEPTACLE KIT FOR 120 POS "CR" SERIES CONNECTOR SIZE C FSC NO 00779 DRAWING NO 211686 SCALE #
MATERIAL SEE CALL OUT	FINISH #	SHEET 1 OF 1

Mouser Electronics

Authorized Distributor

Click to View Pricing, Inventory, Delivery & Lifecycle Information:

[TE Connectivity:](#)

[211686-2](#)