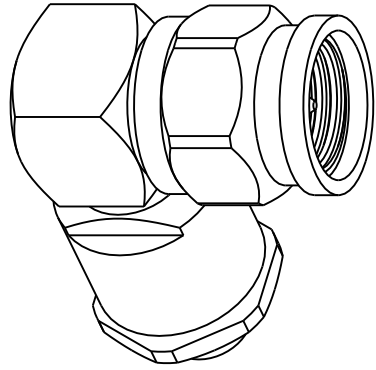


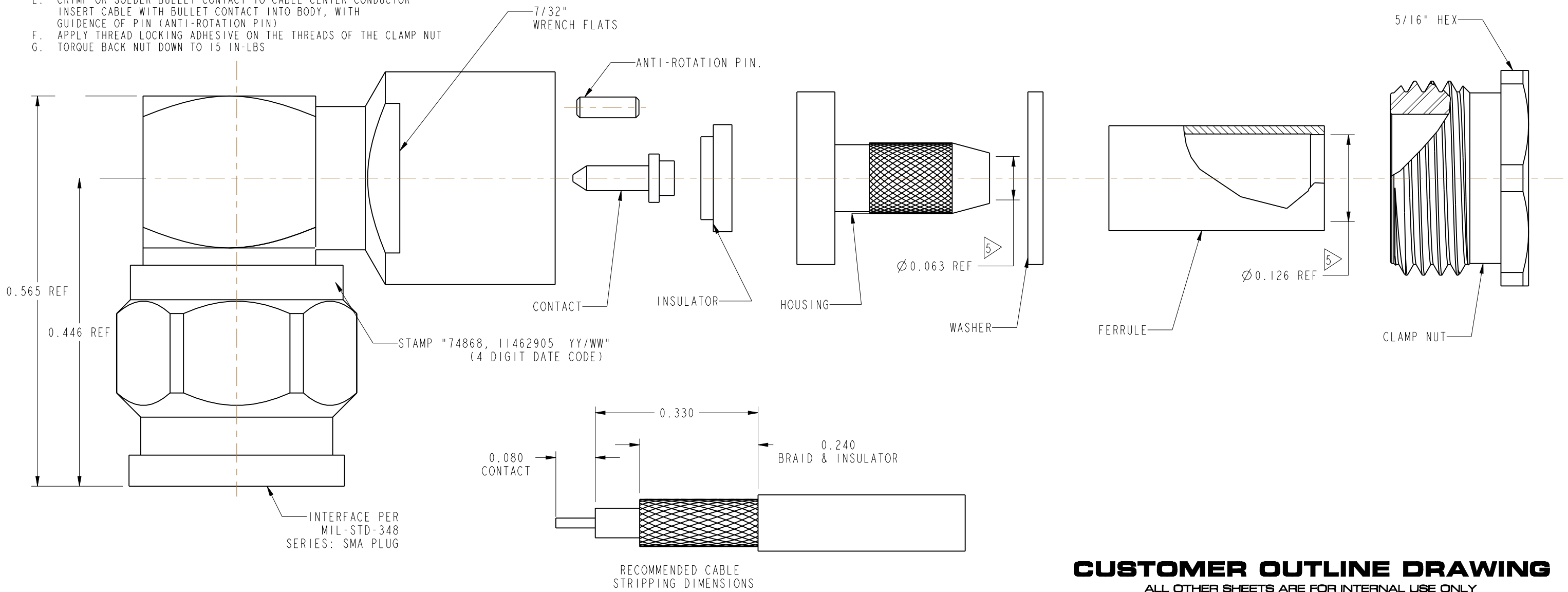
- NOTES:
- MATERIALS AND FINISHES:  
 COUPLING NUT, CLAMP NUT- STAINLESS STEEL, PASSIVATED  
 HOUSING - STAINLESS STEEL, GOLD PLATED  
 CONTACTS - BeCu, GOLD PLATED  
 INSULATORS - PTFE
  - ELECTRICAL:  
 A. IMPEDANCE: 50 OHM
  - MECHANICAL:  
 A. DURABILITY: 500 CYCLES MIN.  
 B. TEMPERATURE RANGE: -65 C TO +165 C
  - PACKAGING:  
 A. QUANTITY: SINGLE PACK  
 B. MARKING: BAG TO BE MARKED  
 "AMPHENOL RF, 901-B5604-2478 , AND DATE CODE

- SHOWS CABLE ENTRY DIMENSIONS.
- CABLE ASSEMBLY INSTRUCTIONS:  
 A. TRIM CABLE AS SHOWN.  
 B. SLIDE CLAMP NUT, WASHER, HOUSING, & FERRULE ONTO CABLE  
 C. CRIMP FERRULE USING A .128 HEX DIE  
 D. SLIDE INSULATOR ONTO CABLE  
 E. CRIMP OR SOLDER BULLET CONTACT TO CABLE CENTER CONDUCTOR  
 INSERT CABLE WITH BULLET CONTACT INTO BODY, WITH  
 GUIDANCE OF PIN (ANTI-ROTATION PIN)  
 F. APPLY THREAD LOCKING ADHESIVE ON THE THREADS OF THE CLAMP NUT  
 G. TORQUE BACK NUT DOWN TO 15 IN-LBS

|                   |     |                                    |         |       |      |
|-------------------|-----|------------------------------------|---------|-------|------|
| 901-B5604-2478    |     | REVISIONS                          |         |       |      |
| DRAWING NO.       | REV | DESCRIPTION                        | DATE    | ECO   | APPR |
| THIRD ANGLE PROJ. | A   | RELEASED TO MFG.                   | --      | 30592 | --   |
|                   | M   | REDRAWN IN PROE                    | 6/12/09 | 47524 | PNE  |
|                   | N   | ADD CABKE STRIPPING, EXPLODED VIEW | 8/2/10  | 48206 | CPM  |
|                   | P   | STAMP WAS "74868 901-B5604-2478"   | 6/15/11 | 48626 | CPM  |



SCALE 3.000



**CUSTOMER OUTLINE DRAWING**  
 ALL OTHER SHEETS ARE FOR INTERNAL USE ONLY

|   |                     |               |           |   |         |  |             |
|---|---------------------|---------------|-----------|---|---------|--|-------------|
| UNLESS OTHERWISE SPECIFIED, DIMENSIONS ARE IN INCHES AND TOLERANCES ARE:<br>2 PLACE DECIMAL      3 PLACE DECIMAL      ANGLES<br>$\pm .015$ (0,381 mm) $\pm .005$ (0,127 mm) $\pm 1^\circ$   | MATERIAL            | DRAWN         | DATE      | TITLE   |         | Amphenol RF<br>Danbury, CT, USA<br>Tainan, Taiwan<br>Shenzhen, China<br>www.amphenolrf.com |             |
|   | SEE NOTES           | PADMANABHAN E | 31-Mar-09 |   |         |  |             |
| NOTICE - These drawings, specifications, or other data (1) are, and remain the property of Amphenol Corp. (2) must be returned upon request; and (3) are confidential and not to be disclosed to any person other than those to whom they are given by Amphenol Corp. The furnishing of these drawings, specifications, or other data by Amphenol Corp., or to any other person to anyone for any purpose is not to be regarded by implication or otherwise in any manner licensing, granting rights or permitting such holder or any other person to manufacture, use or sell any product, process or design, patented or otherwise, that may in any way be related to or disclosed by said drawings, specifications, or other data. | REFERENCE           | ENGINEER      | DATE      | SMA MALE R/A CRIMP<br>CLAMP FOR RG 188 & 316<br>WITH EXTENDED FERRULE |         | SCALE: 7.0:1    SHEET 2 OF 2   |             |
|   | RAYTHEON # 11462905 | F.M           | 8-Apr-83  |   |         |  |             |
|   |                     |               | APPROVED  | DATE  | CODE ID | DWG SIZE   | DRAWING NO. |
|   |                     | H. PARIKH     | 6/12/09   | 74868   | B       | 901-B5604-2478   | P           |
|   |                     | CAD FILE      |           | Root Folder/SMA/901-B5604-2478  |         |  |             |

# Mouser Electronics

Authorized Distributor

Click to View Pricing, Inventory, Delivery & Lifecycle Information:

[Amphenol:](#)

[901-B5604-2478](#)