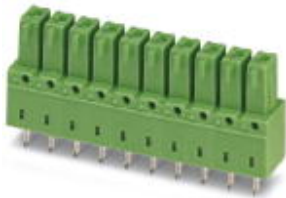


## Base strip - IMCV 1,5/ 7-G-3,81 - 1875470

Please be informed that the data shown in this PDF Document is generated from our Online Catalog. Please find the complete data in the user's documentation. Our General Terms of Use for Downloads are valid (<http://phoenixcontact.com/download>)



Header, Nominal current: 8 A, Rated voltage (III/2): 160 V, Number of positions: 7, Pitch: 3.81 mm, Color: green, Contact surface: Tin, Mounting: Wave soldering

The figure shows a 10-pos. version of the product in green

### Product Features

- Combination with MC 1,5 pin strips for primary/secondary/PCB connection
- Plug-in direction horizontal and vertical to the PCB
- Use in shock-proof applications
- Individual position coding by removing the coding tab and connecting the coding profile to the counterpart
- Clear separation of PCB inputs/outputs



### Key Commercial Data

|                                      |          |
|--------------------------------------|----------|
| Packing unit                         | 1 pc     |
| Weight per Piece (excluding packing) | 3.02 g   |
| Custom tariff number                 | 85366990 |
| Country of origin                    | Poland   |

### Technical data

#### Dimensions

|                          |          |
|--------------------------|----------|
| Length                   | 6.85 mm  |
| Pitch                    | 3.81 mm  |
| Dimension a              | 22.86 mm |
| Constructional height    | 15 mm    |
| Length of the solder pin | 3.4 mm   |
| Pin dimensions           | 1,12 mm  |
| Hole diameter            | 1.2 mm   |

## Base strip - IMCV 1,5/ 7-G-3,81 - 1875470

### Technical data

#### General

|  |                |
|--|----------------|
| Range of articles                      | IMCV 1,5/...-G |
| Insulating material group              | I              |
| Rated surge voltage (III/3)            | 2.5 kV         |
| Rated surge voltage (III/2)            | 2.5 kV         |
| Rated surge voltage (II/2)             | 2.5 kV         |
| Rated voltage (III/3)                  | 160 V          |
| Rated voltage (III/2)                  | 160 V          |
| Rated voltage (II/2)                   | 320 V          |
| Connection in acc. with standard       | EN-VDE         |
| Nominal current $I_N$                  | 8 A            |
| Maximum load current                   | 8 A            |
| Insulating material                    | PA             |
| Flammability rating according to UL 94 | V0             |
| Color                                  | green          |
| Number of positions                    | 7              |

#### Standards and Regulations

|  |        |
|--|--------|
| Connection in acc. with standard       | EN-VDE |
|  | CUL    |
| Flammability rating according to UL 94 | V0     |

### Classifications

#### eCl@ss

|            |          |
|------------|----------|
| eCl@ss 4.0 | 272607xx |
| eCl@ss 4.1 | 27260701 |
| eCl@ss 5.0 | 27260701 |
| eCl@ss 5.1 | 27260701 |
| eCl@ss 6.0 | 27260704 |
| eCl@ss 7.0 | 27440402 |
| eCl@ss 8.0 | 27440402 |
| eCl@ss 9.0 | 27440402 |

#### ETIM

|          |          |
|----------|----------|
| ETIM 3.0 | EC001121 |
| ETIM 4.0 | EC002637 |
| ETIM 5.0 | EC002637 |

## Base strip - IMCV 1,5/ 7-G-3,81 - 1875470

### Classifications

#### UNSPSC

|               |          |
|---------------|----------|
| UNSPSC 6.01   | 30211810 |
| UNSPSC 7.0901 | 39121409 |
| UNSPSC 11     | 39121409 |
| UNSPSC 12.01  | 39121409 |
| UNSPSC 13.2   | 39121409 |

### Approvals

#### Approvals


##### Approvals


VDE Gutachten mit Fertigungsüberwachung / IECEx CB Scheme / CCA / EAC / cULus Recognized / EAC

##### Ex Approvals

##### Approvals submitted

### Approval details

|   |       |
|---|-------|
| VDE Gutachten mit Fertigungsüberwachung  |       |
| Nominal current I <sub>N</sub>  | 8 A   |
| Nominal voltage U <sub>N</sub>  | 160 V |

|   |       |
|---|-------|
| IECEE CB Scheme  |       |
| Nominal current I <sub>N</sub>  | 8 A   |
| Nominal voltage U <sub>N</sub>  | 160 V |

## Base strip - IMCV 1,5/ 7-G-3,81 - 1875470

### Approvals

|                                |       |
|--------------------------------|-------|
| CCA                            |       |
| Nominal current I <sub>N</sub> | 8 A   |
| Nominal voltage U <sub>N</sub> | 160 V |

|     |
|-----|
| EAC |
|-----|

|                                |       |       |
|--------------------------------|-------|-------|
| cULus Recognized               |       |       |
|                                | B     | D     |
| Nominal current I <sub>N</sub> | 8 A   | 8 A   |
| Nominal voltage U <sub>N</sub> | 300 V | 300 V |

|     |
|-----|
| EAC |
|-----|

### Accessories

#### Accessories

#### Labeled terminal marker

Marker card - SK 3,81/2,8:FORTL.ZAHLEN - 0804109



Marker card, Card, white, labeled, Horizontal: Consecutive numbers 1 - 10, 11 - 20, etc. up to 91 - (99)100, Mounting type: Adhesive, for terminal block width: 3.81 mm, Lettering field: 3.81 x 2.8 mm

### Additional products

Base strip - MCO 1,5/ 7-GL-3,81 - 1861772



Header, Nominal current: 8 A, Rated voltage (III/2): 160 V, Number of positions: 7, Pitch: 3.81 mm, Color: green, Contact surface: Tin, Mounting: Wave soldering

## Base strip - IMCV 1,5/ 7-G-3,81 - 1875470

### Accessories

Base strip - MCO 1,5/ 7-GR-3,81 - 1861691



Header, Nominal current: 8 A, Rated voltage (III/2): 160 V, Number of positions: 7, Pitch: 3.81 mm, Color: green, Contact surface: Tin, Mounting: Wave soldering

---

Base strip - MCDV 1,5/ 7-G1-3,81 - 1847783



Header, Nominal current: 8 A, Rated voltage (III/2): 160 V, Number of positions: 7, Pitch: 3.81 mm, Color: green, Contact surface: Tin, Mounting: Wave soldering, In combination with MCV plug components, both an MCVW and an MCVR plug must be used.

---

Base strip - MCDV 1,5/ 7-G-3,81 - 1830457



Header, Nominal current: 8 A, Rated voltage (III/2): 160 V, Number of positions: 7, Pitch: 3.81 mm, Color: green, Contact surface: Tin, Mounting: Wave soldering, In combination with MCV plug components, both an MCVW and an MCVR plug must be used.

---

Base strip - MCD 1,5/ 7-G1-3,81 - 1843127



Header, Nominal current: 8 A, Rated voltage (III/2): 160 V, Number of positions: 7, Pitch: 3.81 mm, Color: green, Contact surface: Tin, Mounting: Wave soldering, In combination with MCV plug components, both an MCVW and an MCVR plug must be used.

---

Base strip - MCD 1,5/ 7-G-3,81 - 1830004



Header, Nominal current: 8 A, Rated voltage (III/2): 160 V, Number of positions: 7, Pitch: 3.81 mm, Color: green, Contact surface: Tin, Mounting: Wave soldering, In combination with MCV plug components, both an MCVW and an MCVR plug must be used.

## Base strip - IMCV 1,5/ 7-G-3,81 - 1875470

### Accessories

Printed-circuit board connector - IMC 1,5/ 7-ST-3,81 - 1857935



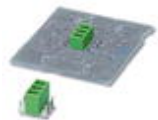
Plug component, Nominal current: 8 A, Rated voltage (III/2): 160 V, Number of positions: 7, Pitch: 3.81 mm, Connection method: Screw connection with tension sleeve, Color: green, Contact surface: Tin

Base strip - MCVK 1,5/ 7-G-3,81 - 1832785



Plug component, Nominal current: 8 A, Rated voltage (III/2): 160 V, Number of positions: 7, Pitch: 3.81 mm, Connection method: Screw connection with tension sleeve, Color: green, Contact surface: Tin, Mounting: DIN rail

Base strip - MCVDU 1,5/ 7-G-3,81 - 1837489



Header, Nominal current: 8 A, Rated voltage (III/2): 160 V, Number of positions: 7, Pitch: 3.81 mm, Color: green, Contact surface: Tin, Mounting: Wave soldering

Base strip - MCV 1,5/ 7-G-3,81 - 1803471



Header, Nominal current: 8 A, Rated voltage (III/2): 160 V, Number of positions: 7, Pitch: 3.81 mm, Color: green, Contact surface: Tin, Mounting: Wave soldering

Base strip - MC 1,5/ 7-G-3,81 - 1803329



Header, Nominal current: 8 A, Rated voltage (III/2): 160 V, Number of positions: 7, Pitch: 3.81 mm, Color: green, Contact surface: Tin, Mounting: Wave soldering

## Base strip - IMCV 1,5/ 7-G-3,81 - 1875470

### Accessories

#### Base strip - MC 1,5/ 7-G-3,81 THT - 1908813



Header, Nominal current: 8 A, Rated voltage (III/2): 160 V, Number of positions: 7, Pitch: 3.81 mm, Color: black, Contact surface: Tin, Mounting: THR soldering, User information and design recommendations for through hole reflow technology can be found under "Downloads"

---

#### Base strip - SMC 1,5/ 7-G-3,81 - 1827321



Header, Nominal current: 8 A, Rated voltage (III/2): 160 V, Number of positions: 7, Pitch: 3.81 mm, Color: green, Contact surface: Tin, Mounting: Wave soldering

---

#### Base strip - EMCV 1,5/ 7-G-3,81 - 1860692



Header, Nominal current: 8 A, Rated voltage (III/2): 160 V, Number of positions: 7, Pitch: 3.81 mm, Color: green, Contact surface: Tin, Mounting: Press-in technology

---

#### Base strip - EMC 1,5/ 7-G-3,81 - 1897856



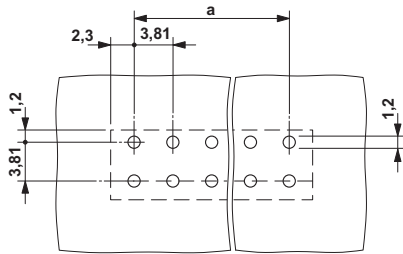
Header, Nominal current: 8 A, Rated voltage (III/2): 160 V, Number of positions: 7, Pitch: 3.81 mm, Color: green, Contact surface: Tin, Mounting: Press-in technology

---

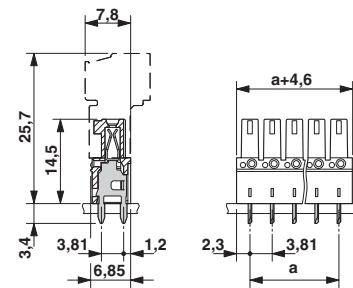
### Drawings

## Base strip - IMCV 1,5/ 7-G-3,81 - 1875470

Drilling diagram



Dimensional drawing





# Mouser Electronics

Authorized Distributor

Click to View Pricing, Inventory, Delivery & Lifecycle Information:

Phoenix Contact:

1875470