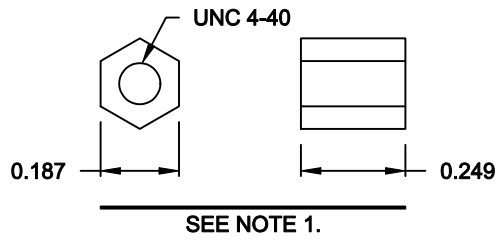
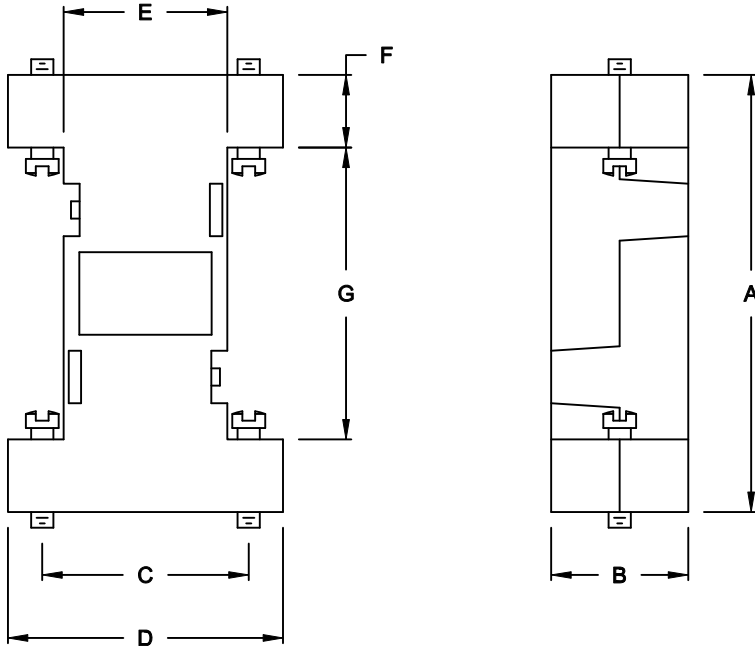


DESCRIPTION: STRAIGHT, SNAP TOGETHER - GRAY & BLACK PLASTIC

**SPECIFICATIONS:**

MATERIAL: A.B.S. UL94-HB

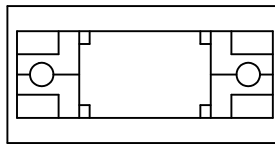


**BACKSHELL KIT INCLUDES:**

- (2) BACKSHELL HALVES
- (4) JACKSCREWS

**NOTE:**

1. IF REQUIRED, COUPLING FOR FEMALE CONNECTOR, P/N 160-000-006R032, MUST BE ORDERED SEPARTELY



**957-YYY-010RYY1**

SERIES \_\_\_\_\_  
 POSITIONS \_\_\_\_\_  
 009 \_\_\_\_\_  
 025 \_\_\_\_\_  
 MATERIAL \_\_\_\_\_  
 010 = PLASTIC \_\_\_\_\_  
 RoHS COMPLIANT \_\_\_\_\_  
 COLOR \_\_\_\_\_  
 01 = BLACK \_\_\_\_\_  
 03 = GRAY \_\_\_\_\_  
 PUT-UP \_\_\_\_\_  
 1 = KIT \_\_\_\_\_

**DIMENSIONS (IN.)**

No. OF PINS	A	B	C	D	E	F	G
09	2.083	0.653	0.984	1.311	0.780	0.346	1.390
25	2.087	0.638	1.852	2.177	1.654	0.351	1.386

**DO NOT SCALE FROM DRAWING**

	THESE DRAWINGS AND SPECIFICATIONS ARE THE PROPERTY OF NorComp AND SHALL NOT BE REPRODUCED, COPIED OR USED AS THE BASIS FOR THE MANUFACTURE OF SALE OF APPARATUS WITHOUT WRITTEN PERMISSION.		DRAWN: <b>C. SMITH</b>	DATE: <b>05-09-07</b>
			CHECKED:	DATE:
<b>NorComp</b>		SCALE: <b>1:1</b>	SHEET <b>1</b> OF <b>1</b>	REV <b>1</b>
		DWG NO. <b>957-YYY-010RYY1</b>		

**RoHS COMPLIANT**

# Mouser Electronics

Authorized Distributor

Click to View Pricing, Inventory, Delivery & Lifecycle Information:

[NorComp:](#)

[957-009-010R031](#) [957-025-010R011](#) [957-009-010R011](#) [957-025-010R031](#) [957-925-010R031](#) [957-015-010R011](#)  
[957-925-010R011](#) [957-015-010R031](#)