

PART
NAME

FUTURA CABINET

PART
No.

MD-1960 THRU MD-1962

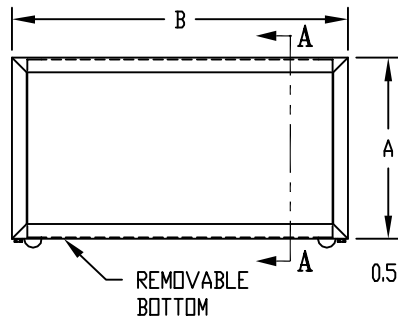
MATERIAL:

BODY, BOTTOM & REAR PANEL ____ 20 GA. STEEL
 FRONT PANEL ____ 18 GA. STEEL

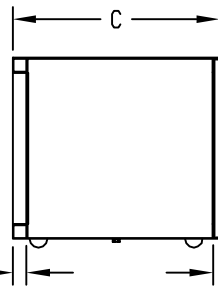
FINISH:

BODY, BOTTOM & REAR PANEL ____ ROYAL BLUE TEXTURED
 FRONT PANEL ____ WHITE TEXTURED
 RUBBER FEET ____ GRAY

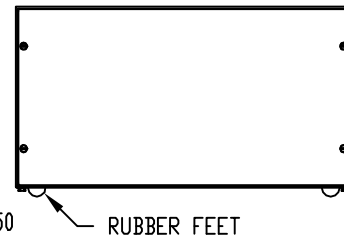
BOTTOM AND REAR PANEL ASSEMBLED WITH #6 x 1/4 LG. SELF TAPPING SCREWS.



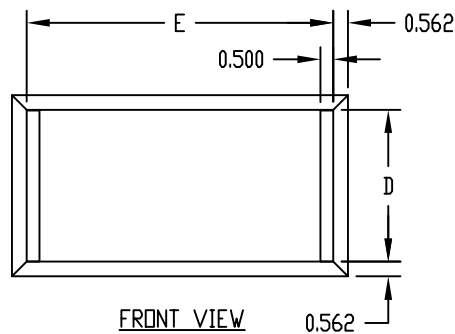
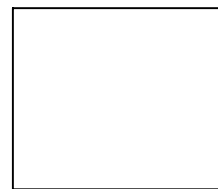
FRONT VIEW



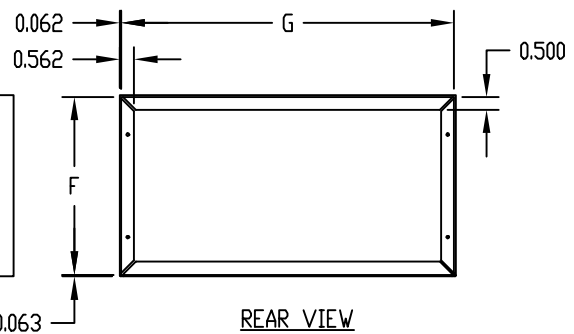
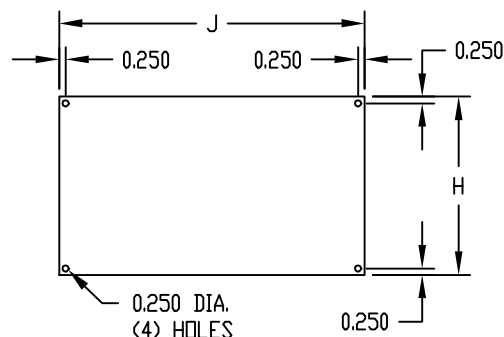
SECTION "A-A"



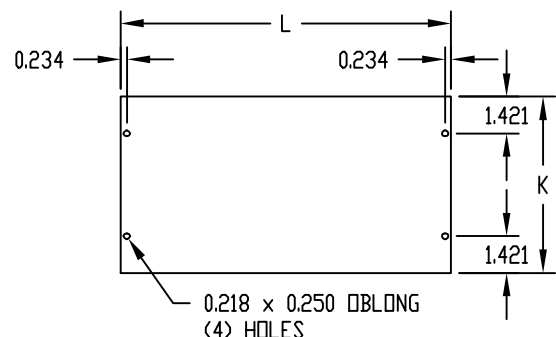
REAR VIEW

FRONT VIEW
(LESS FRONT PANEL)

SIDE VIEW

REAR VIEW
(LESS REAR PANEL)

FRONT PANEL
 (HOLES IN PANEL ARE FOR HANGING
 DURING THE FINISHING OPERATION)



REAR PANEL

PART No.	OVERALL			PANEL SPACE				PANELS			
				FRONT		REAR		FRONT		REAR	
	A	B	C	D	E	F	G	H	J	K	L
MD-1960	7.000	13.000	8.000	5.875	11.875	6.875	12.875	6.890	11.812	6.812	12.781
MD-1961	8.000	14.000	9.000	6.875	12.875	7.875	13.875	7.890	12.812	7.812	13.781
MD-1962	8.000	16.000	9.000	6.875	14.875	7.875	15.875	7.890	14.812	7.812	15.781

Mouser Electronics

Authorized Distributor

Click to View Pricing, Inventory, Delivery & Lifecycle Information:

[Bud Industries:](#)

[MD-1961](#) [MD-1962](#) [MD-1960](#)