

THIS DRAWING IS UNPUBLISHED.

RELEASED FOR PUBLICATION

-,-

© COPYRIGHT - By -

ALL RIGHTS RESERVED.

LOC

DIST

REVISIONS

P

LTR

DESCRIPTION

DATE

DWN

APVD

D2

REVISED PER ECO-11-004917

11MAR11

RK

HMR

## MATERIAL:

HOUSING: THERMOPLASTIC, UL94V-0 BLACK.

TERMINALS: BRIGHT TIN PLATED, COPPER ALLOY.

SCREWS: #6-32, STEEL, ZINC PLATED WITH CLEAR CHROMATE.

## ELECTRICAL:

CURRENT RATING UL/CSA:

CLASS C: 25A, 300V.

CLASS D: 5A, 600V.

WIRE RANGE: 12-22 AWG

## MECHANICAL:

RECOMMENDED TORQUE: 7 IN-LB.

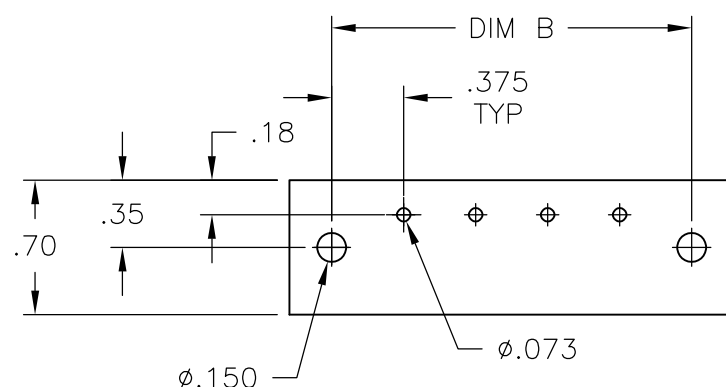
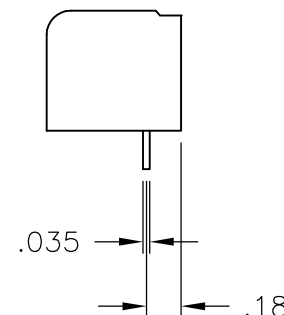
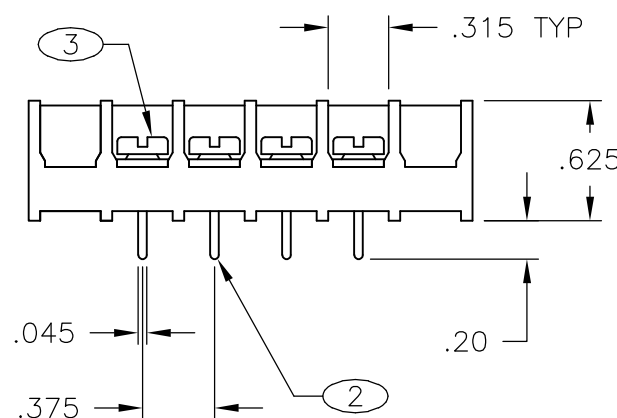
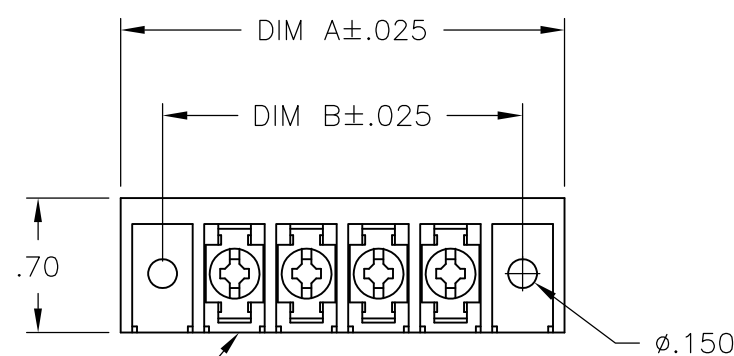
OPERATING TEMP.: 105°C MAX.

1 SCREWS ARE NICKEL PLATED BRASS.

2 SEE FIGURE.

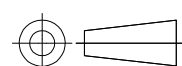
3 MARK WITH WHITE PERMANENT INK.

4 ALL SCREWS BOTTOMED.

5 OBSOLETE PARTS: OBSOLETE CIS  
STREAMLINING PER D.RENAUD/D.SINISI

RECOMMENDED PCB LAYOUT

THIS DRAWING IS A CONTROLLED DOCUMENT.

DIMENSIONS:  
INCHESTOLERANCES UNLESS  
OTHERWISE SPECIFIED:0 PLC ± -  
1 PLC ± -  
2 PLC ± .02  
3 PLC ± .010  
4 PLC ± -  
ANGLES ± 1°

MATERIAL

FINISH

DWN 8/19/03

S SCHLEGEL

CHK 8/19/03

S YODER

APVD 8/19/03

S YODER

PRODUCT SPEC

APPLICATION SPEC

WEIGHT

-

CUSTOMER DRAWING



TE Connectivity

NAME

6PCV-XX-009 ASSEMBLY

SIZE

CAGE CODE

DRAWING NO

RESTRICTED TO

A3

00779

C-796988-5

SCALE NTS

SHEET

1 OF 2

REV D2



# Mouser Electronics

Authorized Distributor

Click to View Pricing, Inventory, Delivery & Lifecycle Information:

[TE Connectivity:](#)

[6PCV-12-009](#)