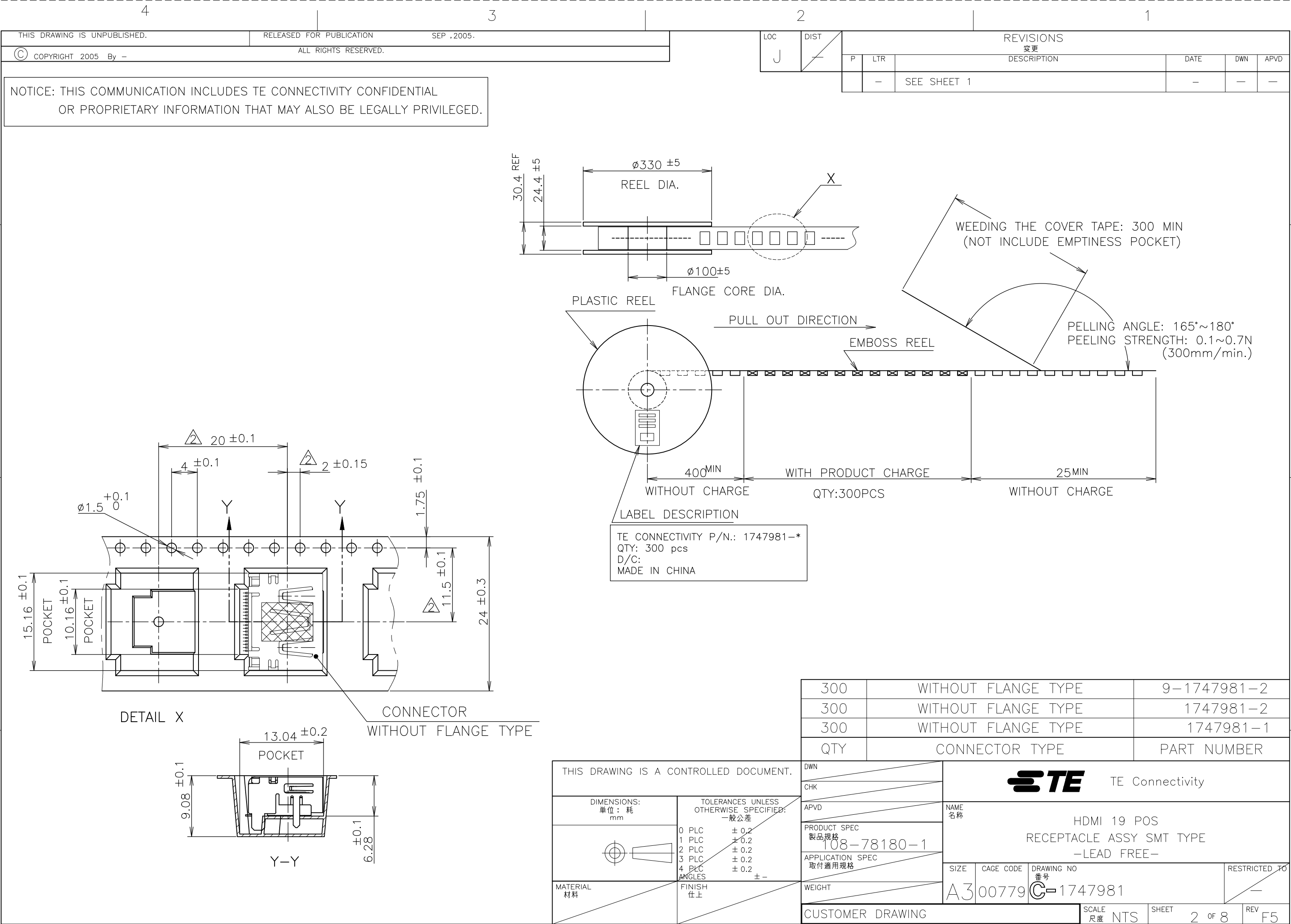


THIS DRAWING IS UNPUBLISHED.				RELEASED FOR PUBLICATION SEP ,2005.							LOC J		DIST		REVISIONS								
© COPYRIGHT 2005 By --				ALL RIGHTS RESERVED.											變更								
															P LTR DESCRIPTION			DATE		DWN		APVD	
															F5 REVISED(ADD A NEW PN)			23DEC2015		A.X		H.W	
NOTICE: THIS COMMUNICATION INCLUDES TE CONNECTIVITY CONFIDENTIAL OR PROPRIETARY INFORMATION THAT MAY ALSO BE LEGALLY PRIVILEGED.																							
AVAILABLE	WITHOUT P/N	Au 0.1um MIN OVER PdNi 0.2um MIN	—	—	0.5	10.55	—	—	1.1	1.1	WITHOUT BOSS	EMBOSS PACKING (SEE SHEET 2)	WITHOUT FLANGE TYPE (SEE SHEET 6)	9—1747981—2									
AVAILABLE	WITH P/N	Au 0.1um MIN OVER PdNi 0.2um MIN	—	M3 x 0.5	1.0	10.55	12.75	10.08	2.2	1.8	WITH BOSS	SOFT TRAY PACKING (SEE SHEET 4)	WITH FLANGE TYPE (SEE SHEET 7)	9—1747981—1									
AVAILABLE	WITHOUT P/N	Au 0.1um MIN OVER PdNi 0.2um MIN	14.3	M3 x 0.5	0.5	10.05	10.95	7.98	2.2	1.8	WITHOUT BOSS	EMBOSS PACKING (SEE SHEET 3)	WITH FLANGE TYPE (SEE SHEET 7)	8—1747981—2 2—1747981—5									
AVAILABLE	WITHOUT P/N	Au 0.1um MIN OVER PdNi 0.2um MIN	—	M3 x 0.5	0.5	10.05	10.95	7.98	2.2	1.8	WITHOUT BOSS	CLEAR TRAY PACKING (SEE SHEET 4)	WITH FLANGE TYPE (SEE SHEET 7)	8—1747981—1									
AVAILABLE	WITHOUT P/N	Au 0.1um MIN OVER PdNi 0.2um MIN	—	M3 x 0.5	1.0	10.55	12.75	10.08	2.2	1.8	WITH BOSS	SOFT TRAY PACKING (SEE SHEET 4)	WITH FLANGE TYPE (SEE SHEET 7)	3—1747981—1									
NOT AVAILABLE	WITHOUT P/N	Au 0.1um MIN OVER PdNi 0.2um MIN	16.3	#4—40 UNC	0.5	10.55	12.75	10.08	2.2	1.8	WITH BOSS	EMBOSS PACKING (SEE SHEET 3)	WITH FLANGE TYPE (SEE SHEET 7)	2—1747981—4									
AVAILABLE	WITHOUT P/N	Au 0.76um MIN	16.3	M3 x 0.5	1.0	10.55	12.75	10.08	2.2	1.8	WITHOUT BOSS	EMBOSS PACKING (SEE SHEET 3)	WITH FLANGE TYPE (SEE SHEET 7)	2—1747981—3									
NOT AVAILABLE	WITHOUT P/N	Au 0.1um MIN OVER PdNi 0.2um MIN	—	#4—40 UNC	0.5	10.05	12.75	10.08	2.2	1.8	WITHOUT BOSS	HARDTRAY PACKING (—)	WITH FLANGE TYPE (SEE SHEET 7)	2—1747981—2									
AVAILABLE	WITHOUT P/N	Au 0.76um MIN	—	M3 x 0.5	1.0	10.55	12.75	10.08	2.2	1.8	WITHOUT BOSS	SOFT TRAY PACKING (SEE SHEET 4)	WITH FLANGE TYPE (SEE SHEET 7)	2—1747981—1									
AVAILABLE	WITHOUT P/N	Au 0.1um MIN OVER PdNi 0.2um MIN	—	M3 x 0.5	1.0	10.55	12.75	10.08	1.5	1.5	WITHOUT BOSS	SOFT TRAY PACKING (SEE SHEET 4)	WITH FLANGE TYPE (SEE SHEET 7)	1—1747981—8									
AVAILABLE	WITHOUT P/N	Au 0.1um MIN OVER PdNi 0.2um MIN	16.3	M3 x 0.5	1.0	10.55	12.75	10.08	2.2	1.8	WITHOUT BOSS	EMBOSS PACKING (SEE SHEET 3)	WITH FLANGE TYPE (SEE SHEET 7)	1—1747981—7									
AVAILABLE	WITHOUT P/N	Au 0.1um MIN OVER PdNi 0.2um MIN	—	M3 x 0.5	0.5	10.05	10.95	7.98	2.2	1.8	WITHOUT BOSS	SOFT TRAY PACKING (SEE SHEET 5)	WITH FLANGE TYPE (SEE SHEET 7)	1—1747981—6									
AVAILABLE	WITHOUT P/N	Au 0.1um MIN OVER PdNi 0.2um MIN	14.3	M3 x 0.5	0.5	10.05	10.95	7.98	1.5	1.5	WITHOUT BOSS	EMBOSS PACKING (SEE SHEET 3)	WITH FLANGE TYPE (SEE SHEET 7)	1—1747981—5									
AVAILABLE	WITHOUT P/N	Au 0.1um MIN OVER PdNi 0.2um MIN	—	M3 x 0.5	1.0	10.55	12.75	10.08	2.2	1.8	WITHOUT BOSS	SOFT TRAY PACKING (SEE SHEET 4)	WITH FLANGE TYPE (SEE SHEET 7)	1—1747981—4									
AVAILABLE	WITHOUT P/N	Au 0.1um MIN OVER PdNi 0.2um MIN	—	#4—40 UNC	0.5	10.05	12.75	10.08	2.2	1.8	WITHOUT BOSS	SOFT TRAY PACKING (SEE SHEET 4)	WITH FLANGE TYPE (SEE SHEET 7)	1—1747981—3									
AVAILABLE	WITHOUT P/N	Au 0.1um MIN OVER PdNi 0.2um MIN	—	M3 x 0.5	0.5	10.05	10.95	7.98	1.5	1.5	WITHOUT BOSS	SOFT TRAY PACKING (SEE SHEET 4)	WITH FLANGE TYPE (SEE SHEET 7)	1—1747981—2									
AVAILABLE	WITHOUT P/N	Au 0.1um MIN OVER PdNi 0.2um MIN	—	M3 x 0.5	0.5	10.05	10.95	7.98	2.2	1.8	WITHOUT BOSS	SOFT TRAY PACKING (SEE SHEET 4)	WITH FLANGE TYPE (SEE SHEET 7)	1—1747981—1									
AVAILABLE	WITHOUT P/N	Au 0.1um MIN OVER PdNi 0.2um MIN	—	—	0.5	10.05	—	—	1.5	1.5	WITHOUT BOSS	EMBOSS PACKING (SEE SHEET 2)	WITHOUT FLANGE TYPE (SEE SHEET 6)	1747981—2									
AVAILABLE	WITHOUT P/N	Au 0.1um MIN OVER PdNi 0.2um MIN	—	—	0.5	10.05	—	—	2.2	1.8	WITHOUT BOSS	EMBOSS PACKING (SEE SHEET 2)	WITHOUT FLANGE TYPE (SEE SHEET 6)	1747981—1									
TOOL STATUS	PART NUMBER MARKING	CONTACT AREA PLATING SPEC J	DIM H	SCREW SIZE DIM G	DIM F	DIM E	DIM D	DIM C	DIM B	DIM A	BOSS	PACKING	CONNECTOR TYPE	PART NUMBER									
1 CONTACT COPLANALITY IS 0.1 MAXIMUM. THIS DIMENSION MEANS CENTER OF THE POCKET. FINISH CONTACT: CONTACT AREA J: SEE TABLE 2μm MIN Sn PLATING ON SOLDERING AREA 2μm MIN Ni UNDER PLATING ALL OVER SHELL: 1μm MIN Sn PLATING ALL OVER 1μm MIN Ni UNDER PLATING ALL OVER										THIS DRAWING IS A CONTROLLED DOCUMENT.		DWN Y.HIRATA 15SEP2005 CHK T.KIMURA 15SEP2005 APVD K.IKEGAMI 15SEP2005 PRODUCT SPEC 製品規格 108—78180—1 APPLICATION SPEC 取付適用規格		NAME 名称 HDMI 19 POS RECEPTACLE ASSY SMT TYPE —LEAD FREE— SIZE CAGE CODE DRAWING NO 番号 A300779C—1747981 RESTRICTED TO									
DIMENSIONS: 単位： 耗 mm TOLERANCES UNLESS OTHERWISE SPECIFIED: 一般公差 0 PLC ± 0.2 1 PLC ± 0.2 2 PLC ± 0.2 3 PLC ± 0.2 4 PLC ± 0.2 ANGLES ± — FINISH 仕上										MATERIAL 材料		WEIGHT		CUSTOMER DRAWING				SCALE 尺度 NTS		SHEET 1 OF 8		REV F5	



THIS DRAWING IS UNPUBLISHED.

RELEASED FOR PUBLICATION

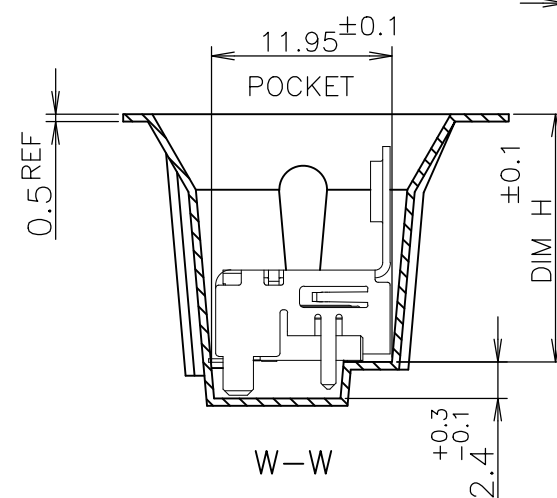
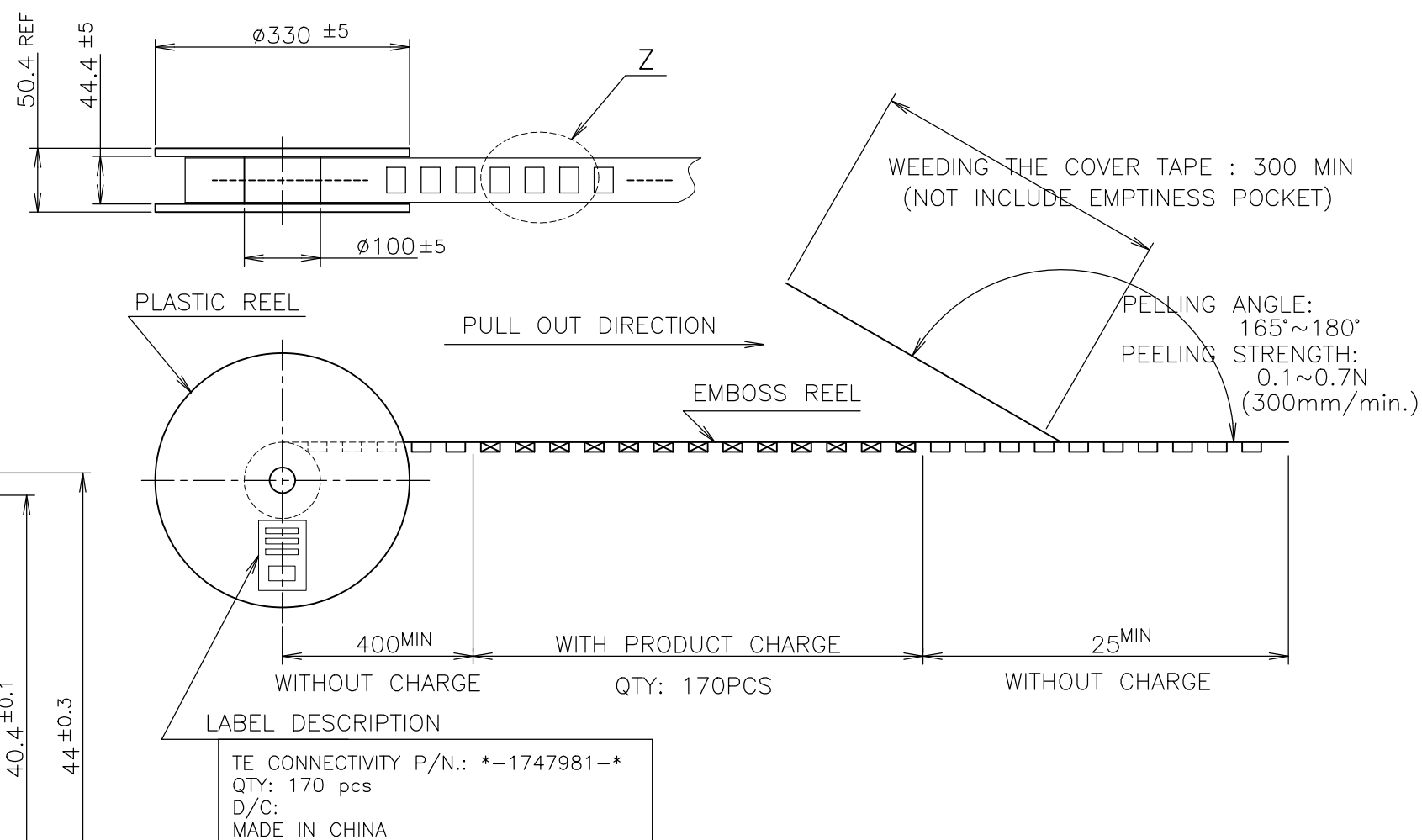
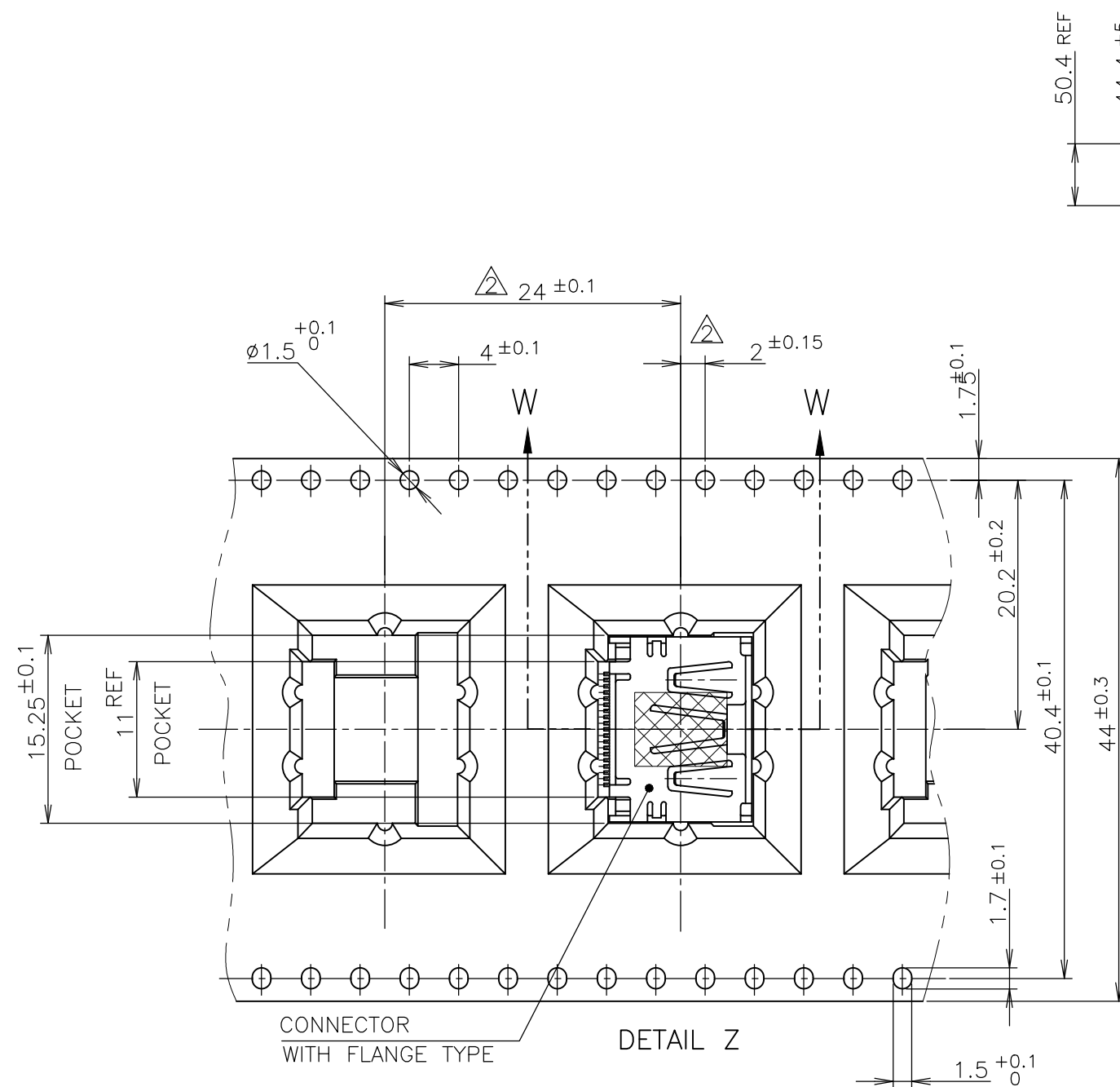
SEP ,2005.

© COPYRIGHT 2005 By -


ALL RIGHTS RESERVED.

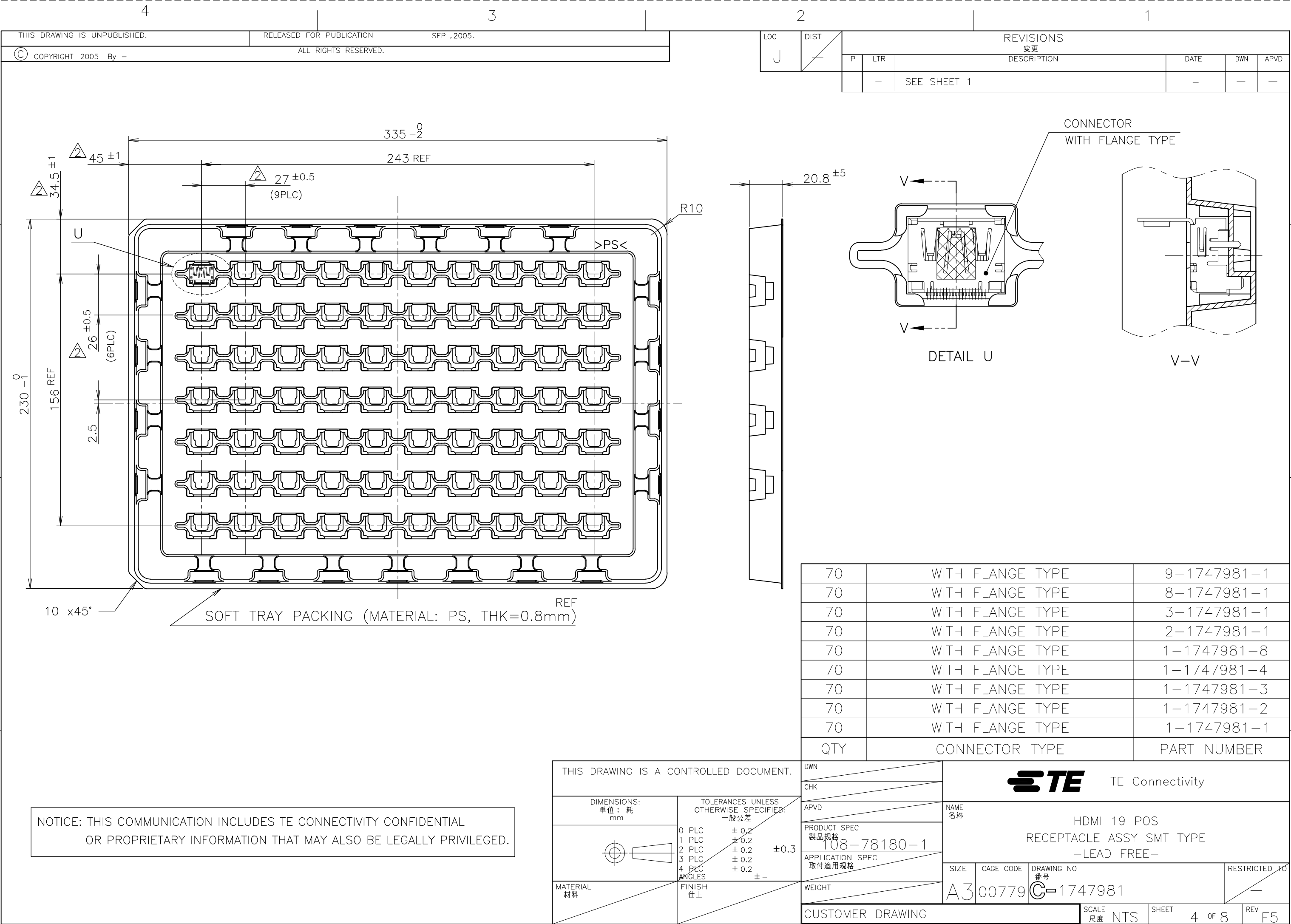
NOTICE: THIS COMMUNICATION INCLUDES TE CONNECTIVITY CONFIDENTIAL
OR PROPRIETARY INFORMATION THAT MAY ALSO BE LEGALLY PRIVILEGED.

LOC	DIST	REVISIONS			
		P	LTR	DESCRIPTION	DATE
J				變更	
				DESCRIPTION	DATE
				SEE SHEET 1	

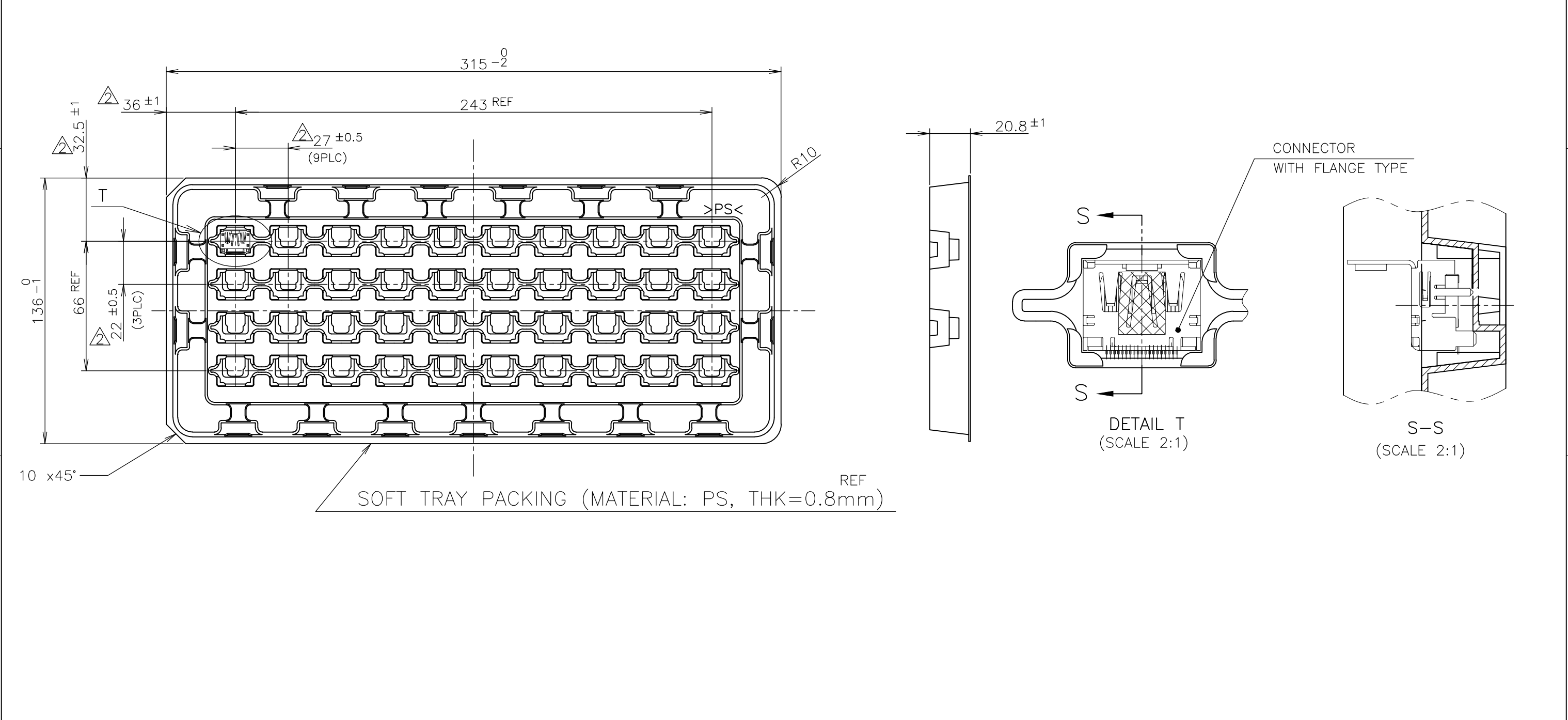


170	WITH FLANGE TYPE	8-1747981-2
170	WITH FLANGE TYPE	2-1747981-5
170	WITH FLANGE TYPE	2-1747981-4
170	WITH FLANGE TYPE	2-1747981-3
170	WITH FLANGE TYPE	1-1747981-7
170	WITH FLANGE TYPE	1-1747981-5
QTY	CONNECTOR TYPE	PART NUMBER

THIS DRAWING IS A CONTROLLED DOCUMENT.		DWN	 TE Connectivity		
DIMENSIONS: 單位: 耗 mm		CHK			
TOLERANCES UNLESS OTHERWISE SPECIFIED: 一般公差		APVD	NAME 名稱		
0 PLC ± 0.2		PRODUCT SPEC 製品規格	HDMI 19 POS		
1 PLC ± 0.2		108-78180-1	RECEPTACLE ASSY SMT TYPE		
2 PLC ± 0.2		APPLICATION SPEC 取付適用規格	-LEAD FREE-		
3 PLC ± 0.2		WEIGHT	SIZE	CAGE CODE	DRAWING NO
4 PLC ± 0.2		CUSTOMER DRAWING	A3	00779	C-1747981
MATERIAL 材料		SCALE 尺度	NTS	SHEET 3 OF 8	REV F5



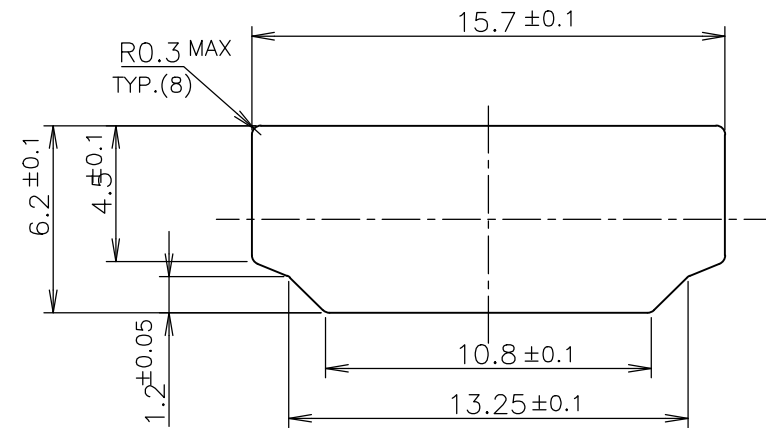
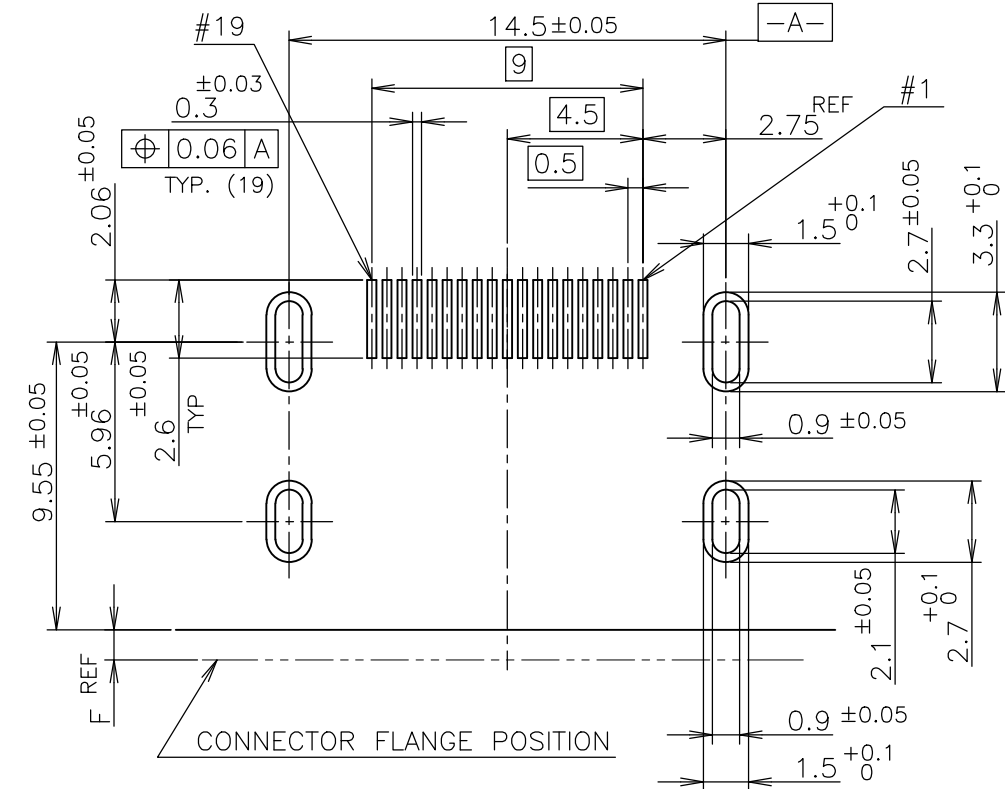
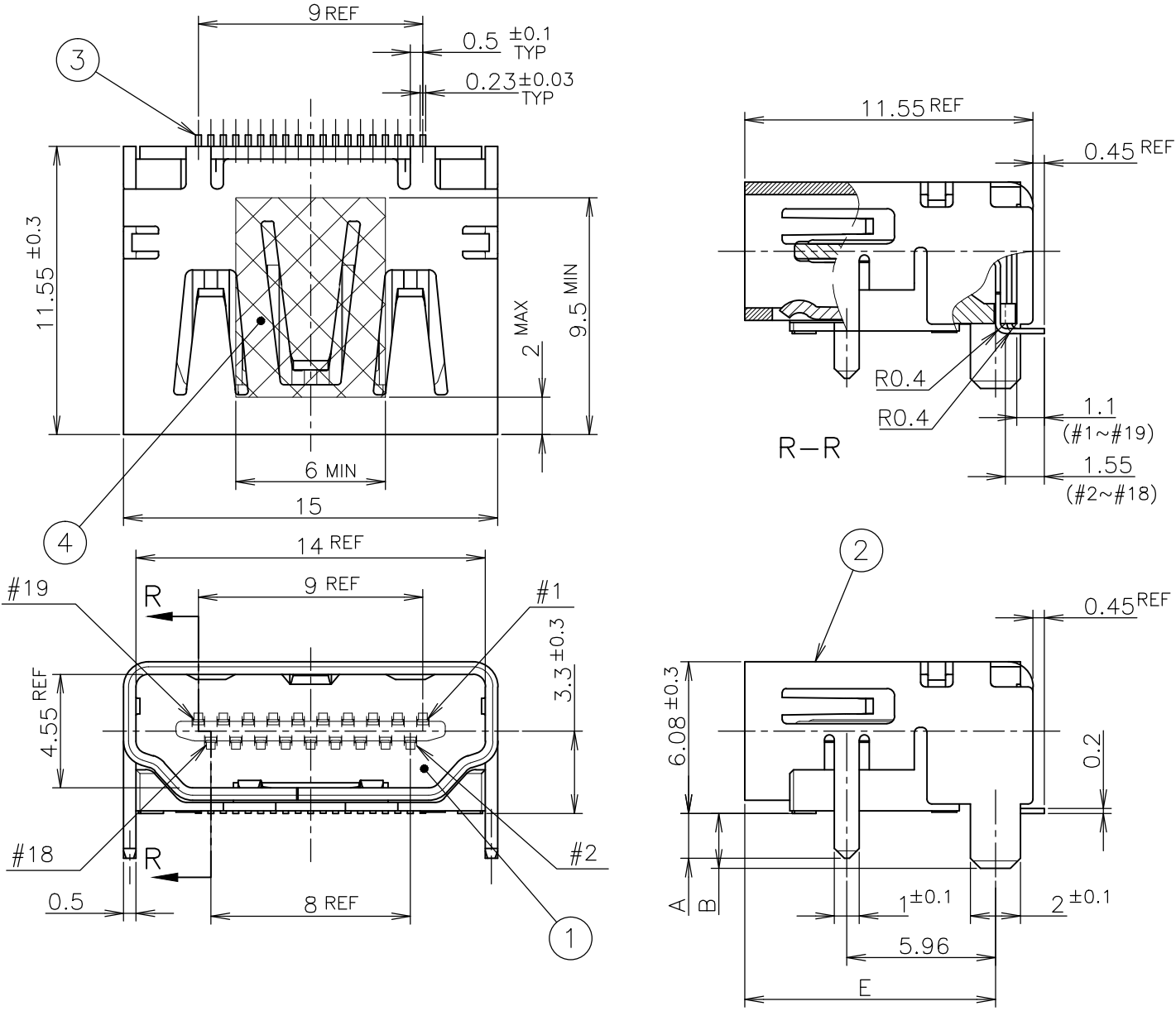
LOC		DIST		REVISIONS					
J		/		P	LTR	DESCRIPTION	DATE	DWN	APVD
					-	SEE SHEET 1	-	-	-



NOTICE: THIS COMMUNICATION INCLUDES TE CONNECTIVITY CONFIDENTIAL OR PROPRIETARY INFORMATION THAT MAY ALSO BE LEGALLY PRIVILEGED.

THIS DRAWING IS A CONTROLLED DOCUMENT.		DWN		<div>TE Connectivity</div> <div>HDMI 19 POS RECEPTACLE ASSY SMT TYPE -LEAD FREE-</div>					
DIMENSIONS: 単位: 耗 mm		CHK		NAME 名称					
TOLERANCES UNLESS OTHERWISE SPECIFIED: 一般公差		APVD		PRODUCT SPEC 製品規格 108-78180-1					
MATERIAL 材料		WEIGHT		APPLICATION SPEC 取付適用規格					
FINISH 仕上		CUSTOMER DRAWING		SIZE A3		CAGE CODE 00779		DRAWING NO 番号 C-1747981	
				SCALE 尺度 NTS		SHEET 5 OF 8		REV F5	


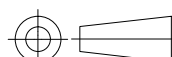
LOC	DIST	REVISIONS				DATE	DWN	APVD
		P	LTR	DESCRIPTION	變更			
J		-	-	SEE SHEET 1		-	-	-



CONNECTOR WITHOUT FLANGE TYPE

NOTICE: THIS COMMUNICATION INCLUDES TE CONNECTIVITY CONFIDENTIAL OR PROPRIETARY INFORMATION THAT MAY ALSO BE LEGALLY PRIVILEGED.

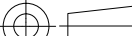
	POLYIMIDE	1	POLYIMIDE TAPE	④
③	COPPER ALLOY	19	CONTACT	③
③	COPPER ALLOY	1	SHELL	②
	THERMOPLASTIC UL94V-0, BLACK COLOR	1	HOUSING	①
FINISH	MATERIAL	QTY	DISCRIPTION	ITEM

THIS DRAWING IS A CONTROLLED DOCUMENT.		DWN		<div>TE Connectivity</div>			
		CHK					
DIMENSIONS: 単位： 耗 mm		TOLERANCES UNLESS OTHERWISE SPECIFIED: 一般公差		APVD		NAME 名称	
		0 PLC ± 0.2		PRODUCT SPEC 製品規格		HDMI 19 POS RECEPTACLE ASSY SMT TYPE —LEAD FREE—	
		1 PLC ± 0.2		108-78180-1			
		2 PLC ± 0.2		APPLICATION SPEC 取付適用規格			
		3 PLC ± 0.2					
4 PLC ± 0.2		ANGLES ± 0.1		WEIGHT		SIZE	
MATERIAL 材料		FINISH 仕上		A3		CAGE CODE 00779	
				CUSTOMER DRAWING		DRAWING NO 番号 C-1747981	
						RESTRICTED TO —	
						SCALE 尺度 4:1	
						SHEET 6 of 8	
						REV F5	



THIS DRAWING IS A CONTROLLED DOCUMENT.

DIMENSIONS:
單位：耗
mm



MATERIAL
材料

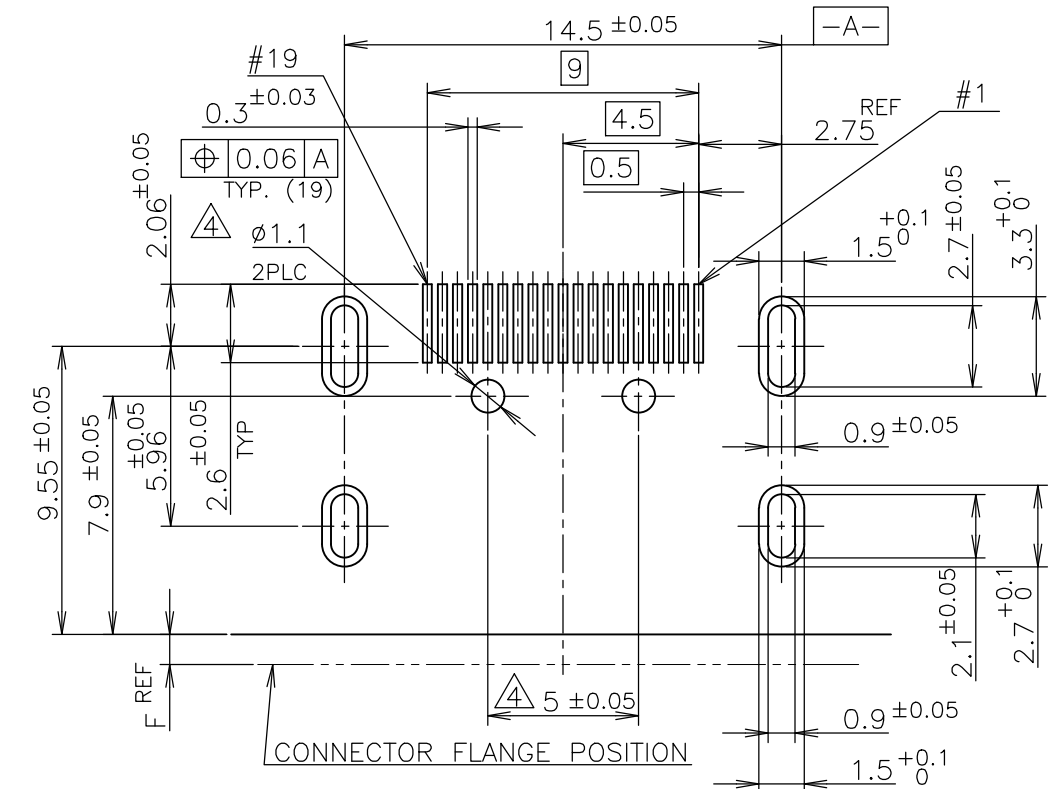
TOLERANCES UNLESS OTHERWISE SPECIFIED: 一般公差		
0	PLC	± 0.2
1	PLC	± 0.2
2	PLC	± 0.2
3	PLC	± 0.2
4	PLC	± 0.2
ANGLES		$\pm 1^\circ$
FINISH 仕上		

DWN
CHK
APVD
PRODUCT SPEC 製品規格
108-78180-1
APPLICATION SPEC 取付適用規格
WEIGHT
CUSTOMER DRAWING

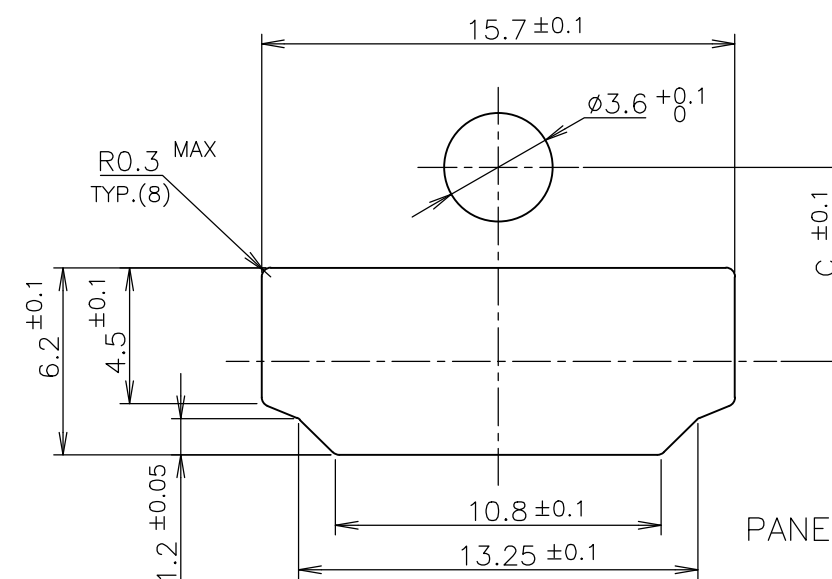
TE Connectivity

HDMI 19 POS
RECEPTACLE ASSY SMT TYPE
—LEAD FREE—

SIZE	CAGE CODE	DRAWING NO 番号	RESTRICTED TO
A3	00779	C-1747981	—
		SCALE 尺度	SHEET
		NTS	7 OF 8
			REV F5



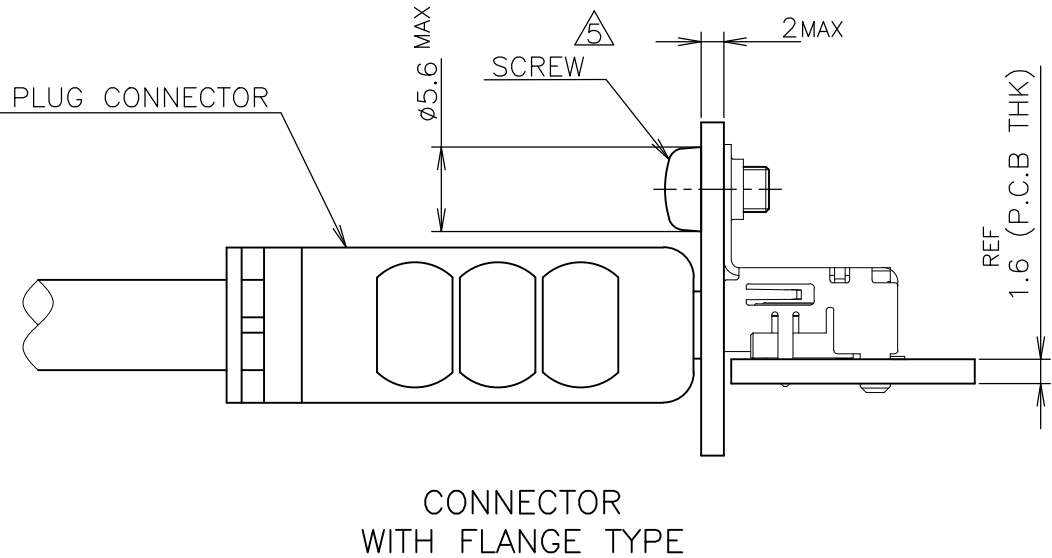
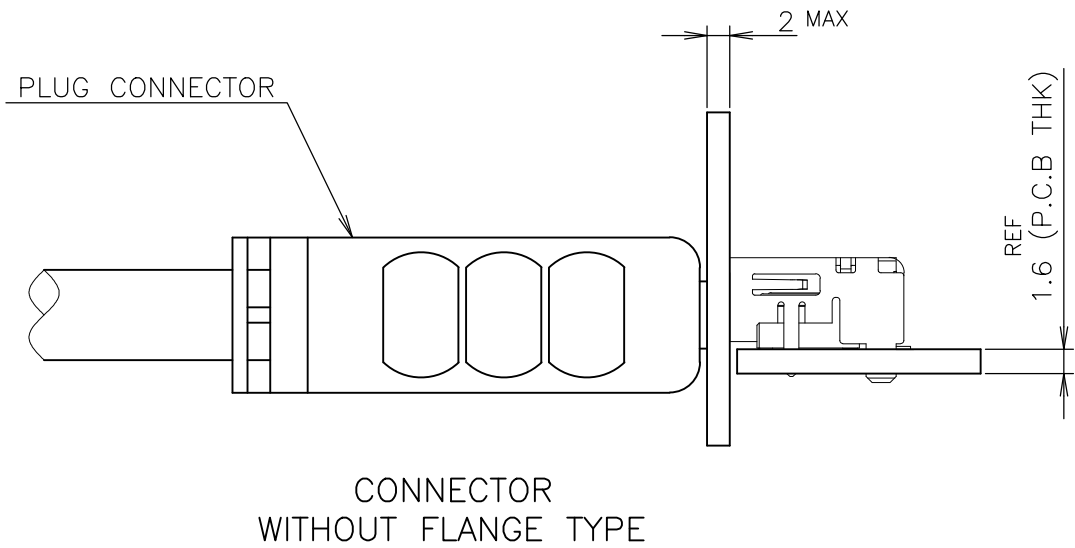
P.C.B LAYOUT
SHOWN AS CONNECTOR MOUNTING SIDE
TOLERANCE: NON-CUMULATIVE
(REFERENCE)



PANEL CUT OUT DIMENSION
(REFERENCE)

LOC	DIST	REVISIONS			
		P	LTR	DESCRIPTION	DATE
J			-	SEE SHEET 1	-

NOTICE: THIS COMMUNICATION INCLUDES TE CONNECTIVITY CONFIDENTIAL OR PROPRIETARY INFORMATION THAT MAY ALSO BE LEGALLY PRIVILEGED.



MATING CONDITION (REFERENCE)
(SCALE 2:1)

THIS DRAWING IS A CONTROLLED DOCUMENT.		DWN			
DIMENSIONS: 単位： 耗 mm		CHK			
TOLERANCES UNLESS OTHERWISE SPECIFIED: 一般公差		APVD			
0 PLC ± 0.2		PRODUCT SPEC			
1 PLC ± 0.2		製品規格			
2 PLC ± 0.2		108-78180-1			
3 PLC ± 0.2		APPLICATION SPEC			
4 PLC ± 0.2		取付適用規格			
ANGLES ± 0.2		WEIGHT			
FINISH 仕上		CUSTOMER DRAWING			
MATERIAL 材料		SCALE 2:1			
		SHEET 8 of 8			
		REV F5			

Mouser Electronics

Authorized Distributor

Click to View Pricing, Inventory, Delivery & Lifecycle Information:

[TE Connectivity:](#)

[1-1747981-6](#)