

Interface module - VIP-3/SC/FLK40/LED - 2322100

Please be informed that the data shown in this PDF Document is generated from our Online Catalog. Please find the complete data in the user's documentation. Our General Terms of Use for Downloads are valid (<http://phoenixcontact.com/download>)



VARIOFACE module, with screw connection and flat-ribbon cable connector, for mounting on NS 35 rails, with pin strip and short and long locking latches for socket strips, 40-pos., with LED

The illustration shows a 34-position version

Product Features

- 10 to 64-pos.
- Metal foot
- According to IEC 60603-13
- 1:1 connection
- Screw connection



Key Commercial Data

Packing unit	1 pc
Weight per Piece (excluding packing)	200.0 g
Custom tariff number	85369010
Country of origin	United States

Technical data

Dimensions

Width	77.8 mm
Height	69 mm
Depth	62 mm

Ambient conditions

Ambient temperature (operation)	-20 °C ... 50 °C
Ambient temperature (storage/transport)	-20 °C ... 70 °C

Interface module - VIP-3/SC/FLK40/LED - 2322100

Technical data

General

Max. perm. operating voltage	24 V DC
Max. perm. current (per branch)	1 A
Number of positions	40
Status display	LED
Mounting position	any
Standards/regulations	IEC 60664
	DIN EN 50178
	IEC 62103
Degree of pollution	2
Overvoltage category	II

Connection data for connection 1

Connection name	Field level
Connection in acc. with standard	IEC / EN
Connection method	Screw connection
Stripping length	8 mm
Screw thread	M3
Conductor cross section solid	0.2 mm ² ... 4 mm ²
Conductor cross section flexible	0.2 mm ² ... 2.5 mm ²
Conductor cross section AWG	24 ... 12

Connection data for connection 2

Connection name	Controller level
Connection method	IDC/FLK pin strip (2.54 mm)
Number of connections	1
Number of positions	40

Standards and Regulations

Connection in acc. with standard	CUL
Standards/regulations	IEC 60664
	DIN EN 50178
	IEC 62103
Degree of pollution	2
Overvoltage category	II

Classifications

eCl@ss

eCl@ss 4.0	27250313
------------	----------

Interface module - VIP-3/SC/FLK40/LED - 2322100

Classifications

eCl@ss

eCl@ss 4.1	27250313
eCl@ss 5.0	27250313
eCl@ss 5.1	27250313
eCl@ss 6.0	27242608
eCl@ss 7.0	27141152
eCl@ss 8.0	27141152
eCl@ss 9.0	27141152

ETIM

ETIM 2.0	EC001434
ETIM 3.0	EC001604
ETIM 4.0	EC001604
ETIM 5.0	EC002780

UNSPSC

UNSPSC 6.01	30211824
UNSPSC 7.0901	39121421
UNSPSC 11	39121421
UNSPSC 12.01	39121421
UNSPSC 13.2	39121421

Approvals

Approvals

Approvals

UL Recognized / cUL Recognized / CSA / EAC / cULus Recognized

Ex Approvals

Approvals submitted

Approval details

Interface module - VIP-3/SC/FLK40/LED - 2322100

Approvals

UL Recognized	
mm ² /AWG/kcmil	30-12
Nominal current I _N	1 A
Nominal voltage U _N	24 V

cUL Recognized	
mm ² /AWG/kcmil	30-12
Nominal current I _N	1 A
Nominal voltage U _N	24 V

CSA	
mm ² /AWG/kcmil	28-12
Nominal current I _N	1 A
Nominal voltage U _N	24 V

EAC

cULus Recognized

Accessories

Accessories

System cable

Interface module - VIP-3/SC/FLK40/LED - 2322100

Accessories

Cable - FLK 40/EZ-DR/ 50/KONFEK - 2288985



Round cable sets, with two 40-pos. socket strips (1:1 connection), also for use with Siemens SIMATIC® S5-95U and 100U (32 x digital IN/OUT), cable length: 0.5 m

Cable - FLK 40/EZ-DR/ 100/KONFEK - 2288998



Round cable sets, with two 40-pos. socket strips (1:1 connection), also for use with Siemens SIMATIC® S5-95U and 100U (32 x digital IN/OUT), cable length: 1 m

Cable - FLK 40/EZ-DR/ 150/KONFEK - 2289007



Round cable sets, with two 40-pos. socket strips (1:1 connection), also for use with Siemens SIMATIC® S5-95U and 100U (32 x digital IN/OUT), cable length: 1.5 m

Cable - FLK 40/EZ-DR/ 200/KONFEK - 2289010



Round cable sets, with two 40-pos. socket strips (1:1 connection), also for use with Siemens SIMATIC® S5-95U and 100U (32 x digital IN/OUT), cable length: 2 m

Cable - FLK 40/EZ-DR/ 250/KONFEK - 2289023



Round cable sets, with two 40-pos. socket strips (1:1 connection), also for use with Siemens SIMATIC® S5-95U and 100U (32 x digital IN/OUT), cable length: 2.5 m

Interface module - VIP-3/SC/FLK40/LED - 2322100

Accessories

Cable - FLK 40/EZ-DR/ 300/KONFEK - 2289036



Round cable sets, with two 40-pos. socket strips (1:1 connection), also for use with Siemens SIMATIC® S5-95U and 100U (32 x digital IN/OUT), cable length: 3 m

Cable - FLK 40/EZ-DR/ 350/KONFEK - 2289049



Round cable sets, with two 40-pos. socket strips (1:1 connection), also for use with Siemens SIMATIC® S5-95U and 100U (32 x digital IN/OUT), cable length: 3.5 m

Cable - FLK 40/EZ-DR/ 400/KONFEK - 2289052



Round cable sets, with two 40-pos. socket strips (1:1 connection), also for use with Siemens SIMATIC® S5-95U and 100U (32 x digital IN/OUT), cable length: 4 m

Cable - FLK 40/EZ-DR/ 600/KONFEK - 2299589



Round cable sets, with two 40-pos. socket strips (1:1 connection), also for use with Siemens SIMATIC® S5-95U and 100U (32 x digital IN/OUT), cable length: 6 m

Cable - FLK 40/EZ-DR/ 800/KONFEK - 2299592



Round cable sets, with two 40-pos. socket strips (1:1 connection), also for use with Siemens SIMATIC® S5-95U and 100U (32 x digital IN/OUT), cable length: 8 m

Interface module - VIP-3/SC/FLK40/LED - 2322100

Accessories

Cable - FLK 40/EZ-DR/1000/KONFEK - 2299602



Round cable sets, with two 40-pos. socket strips (1:1 connection), also for use with Siemens SIMATIC® S5-95U and 100U (32 x digital IN/OUT), cable length: 10 m

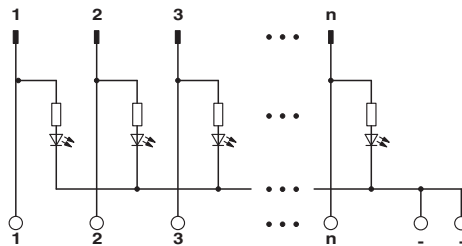
Cable - FLK EZ-DR.../.../... - 2295059



Round cable, with preassembly, not shielded, variable cable length

Drawings

Circuit diagram



Mouser Electronics

Authorized Distributor

Click to View Pricing, Inventory, Delivery & Lifecycle Information:

[Phoenix Contact:](#)

[2322100](#)