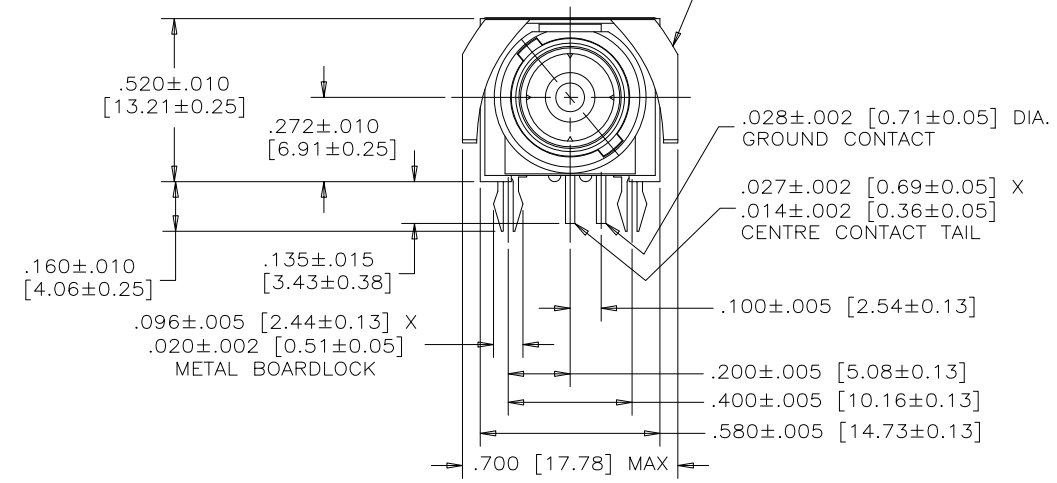
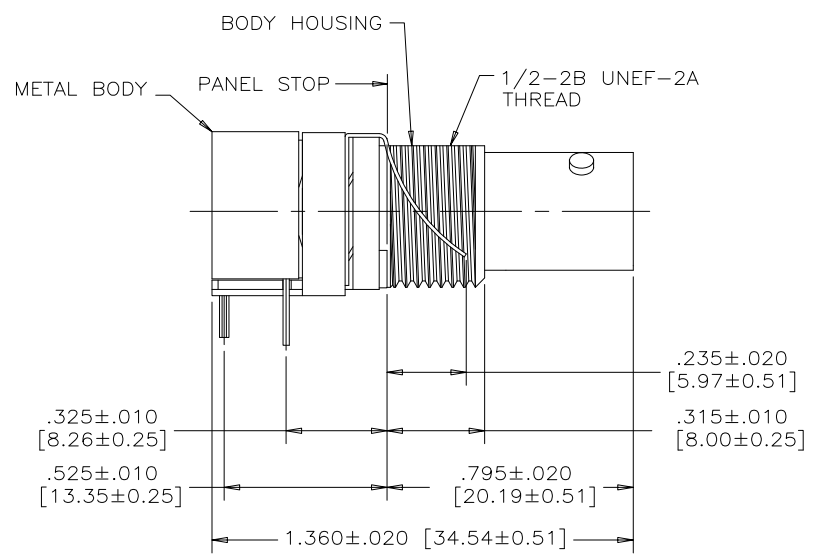


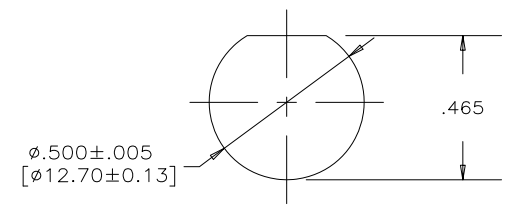
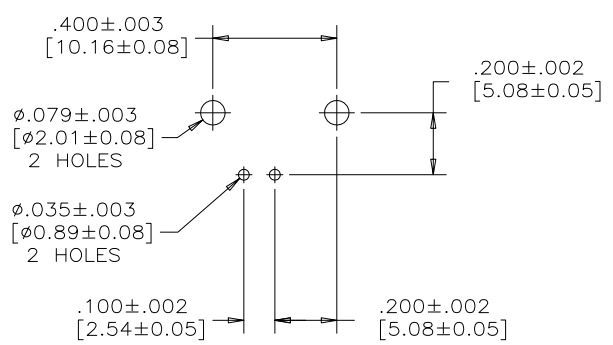
REVISIONS			
REV	DESCRIPTION, ECN, EAR NO.	DATE	APP'D
A	NEW PER EAR 14177	MAR20/13	K.L.



MECHANICAL SPECIFICATION:

ALL MATERIALS ARE RoHS COMPLIANT

BODY HOUSING : THERMOPLASTIC POLYESTER
 GROUNDING DEVICE : COPPER ALLOY, TIN PLATED
 CENTER CONTACT : PHOSPHOR BRONZE, 10 μ" [0.25 μm], GOLD PLATED OVER NICKEL ON MATING AREA WITH TIN ON TAIL
 METAL BODY : HIGH STRENGTH ZINC DIECAST NICKEL PLATED

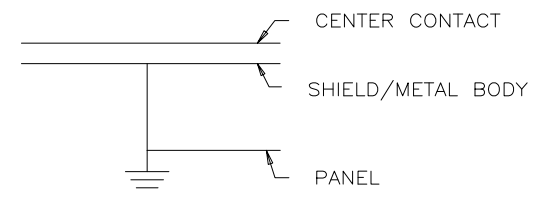


RECOMMENDED PANEL CUT-OUT

ELECTRICAL SPECIFICATION:

DIELECTRIC WITHSTANDING VOLTAGE	1000 VDC 500 V RMS
WORKING VOLTAGE	200 VDC
CONTACT RESISTANCE	5 MILLIOHMS MAX
IMPEDANCE (SEE PART NUMBER)	50 OR 75 OHM NOMINAL
OPERATING TEMPERATURE	-20°C TO +85°C

P.C.B. CONFIGURATION



CIRCUIT DIAGRAM

AMPHENOL PART NO.	IMPEDANCE
456E-117G	50 OHM
456E-717G	75 OHM

NOTE: BOARDLOCKS AND FRONT PANEL GROUNDING DEVICE ARE ELECTRICALLY CONNECTED TO THE BODY.



UNLESS SPECIFIED OTHERWISE	DRAWN D.WENG	MAR19/13
PRIMARY UNITS INCHES	CHECKED	
SECONDARY MILLIMETERS	M.E. APP'D	
REFERENCE IN PARENTHESES	Q.A. APP'D	
GENERAL TOLERANCES	DWG APP'D K.LAMBIE	MAR20/13
1 DECIMAL PLACE	ENG. REL. NO. EAR 14177	
2 DECIMAL PLACES	REF.	
3 DECIMAL PLACES	THIRD ANGLE PROJECTION	DO NOT SCALE DRAWING
ANGULAR DEGREES		

Amphenol Canada Corp.
www.amphenolcanada.com

456E SERIES B.N.C. RIGHT ANGLE CONNECTOR, PANEL TO BODY GROUND, RoHS COMPLIANT

DWG NO. P-456E-X17G

REV A

CODE ID NO. 03554 | DWG SIZE C | SCALE 3:1 | SHEET 1 OF 1

Mouser Electronics

Authorized Distributor

Click to View Pricing, Inventory, Delivery & Lifecycle Information:

[Amphenol:](#)

[456E717G](#)