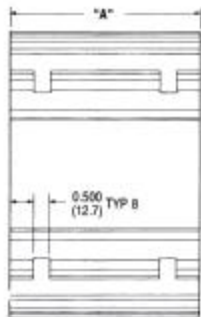
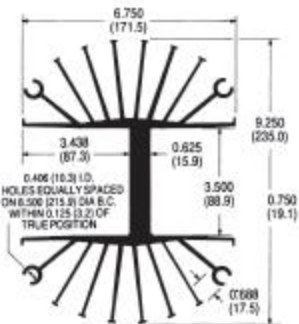


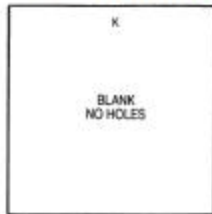
# wakefield-vette

Standard P/N	Width in. (mm)	Nominal Dimensions		Semiconductor Mounting Hole Pattern	Thermal Performance at Typical Load		Weight lbs. (grams)
		Length "A" in. (mm)	Height in. (mm)		Natural Convection	Forced Convection	
490-35K	9.250 (235.0)	3.500 (88.9)	6.750 (171.5)	None	84° C @ 200W	0.18° C/W @ 600 LFM	3.2400 (1469.66)
490-6K	9.250 (235.0)	6.000 (152.4)	6.750 (171.5)	None	60° C @ 200W	0.13° C/W @ 600 LFM	5.4700 (2481.19)
490-12K	9.250 (235.0)	12.000 (304.8)	6.750 (171.5)	None	45° C @ 200W	0.09° C/W @ 600 LFM	10.6200 (4817.23)

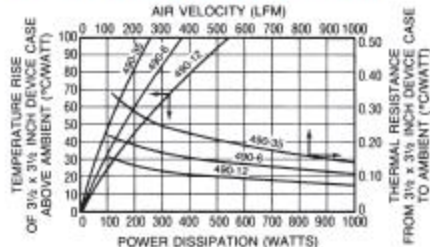
## MECHANICAL DIMENSIONS 490 SERIES (EXTRUSION PROFILE 2131)



### SEMICONDUCTOR MOUNTING HOLE



### NATURAL AND FORCED CONVECTION CHARACTERISTICS



Dimensions: in. (mm)

# Mouser Electronics

Authorized Distributor

Click to View Pricing, Inventory, Delivery & Lifecycle Information:

[Wakefield-Vette:](#)

[490-6K](#) [490-12K](#)