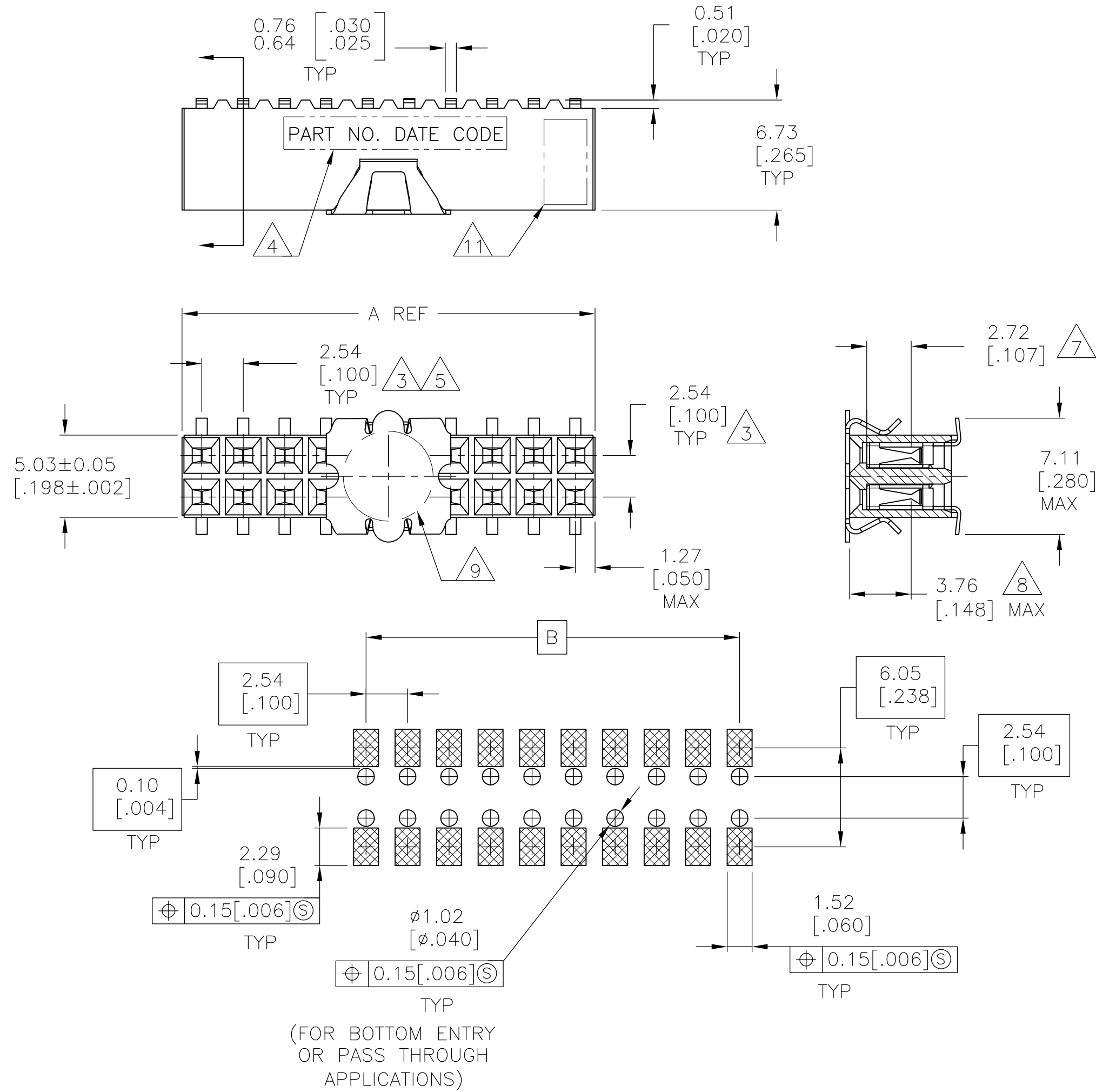


THIS DRAWING IS UNPUBLISHED. RELEASED FOR PUBLICATION
 © COPYRIGHT - By - ALL RIGHTS RESERVED.

LOC		DIST		REVISIONS				
P	LTR	DESCRIPTION			DATE	DWN	APVD	
AD	00	J9		REVISED PER ECO-13-005565	01APR13	KH	JO	

FOR PART NUMBERS 5-147105-1 THRU 9-147105-0
 SEE SHEET 2



RECOMMENDED PC BOARD LAYOUT
 0.20[.008] THICK STENCIL

FINISH	EIA TAPE WIDTH	B	A	NO. OF POSN.	PART NUMBER
1	B	A	B	80	4-147105-0
				78	3-147105-9
				76	3-147105-8
				74	3-147105-7
				72	3-147105-6
				70	3-147105-5
				68	3-147105-4
				66	3-147105-3
				64	3-147105-2
				62	3-147105-1
				60	3-147105-0
				58	2-147105-9
				56	2-147105-8
				54	2-147105-7
				52	2-147105-6
				50	2-147105-5
				48	2-147105-4
				46	2-147105-3
				44	2-147105-2
				42	2-147105-1
				40	2-147105-0
				38	1-147105-9
				36	1-147105-8
				34	1-147105-7
32	1-147105-6				
30	1-147105-5				
28	1-147105-4				
26	1-147105-3				
24	1-147105-2				
22	1-147105-1				
20	1-147105-0				
18	147105-9				
16	147105-8				
14	147105-7				
12	147105-6				
10	147105-5				
8	147105-4				
6	147105-3				
4	147105-2				
2	147105-1				

THIS DRAWING IS A CONTROLLED DOCUMENT.		DWN M.BINNER 06NOV02	TE Connectivity	
DIMENSIONS: mm [INCHES]		CHK J.OLSON 06NOV02		
TOLERANCES UNLESS OTHERWISE SPECIFIED:		APVD J.OLSON 06NOV02	NAME	
0 PLC ± -	1 PLC ± -	PRODUCT SPEC	RECEPTACLE ASSEMBLY, MOD IV, DOUBLE ROW, DUAL ENTRY, .100X.100CL, SURFACE MOUNT, AMPMODU	
2 PLC ± .005[0.13]	3 PLC ± -	APPLICATION SPEC	SIZE	CAGE CODE
4 PLC ± -	ANGLES ± -	108-25022	A2	00779
MATERIAL	FINISH	WEIGHT	DRAWING NO	
1	SEE TABLE	114-25018	C=147105	
		CUSTOMER DRAWING	SCALE	SHEET
			4:1	1 of 2
				REV
				J9


THIS DRAWING IS UNPUBLISHED. RELEASED FOR PUBLICATION
 © COPYRIGHT - By - ALL RIGHTS RESERVED.

LOC		DIST		REVISIONS			
P	LTR	DESCRIPTION		DATE	DWN	APVD	
AD	00	-	-	SEE SHEET 1	-	-	

- 1 HOUSING: FLAME RETARDANT, GLASS FILLED, POLYESTER, COLOR: BLACK.
CONTACT: PHOSPHOR BRONZE
VACUUM COVER: STAINLESS STEEL
- 2 CONTACT: DUPLEX PLATED 0.76µm[.000030] GOLD IN CONTACT AREA, 3.81-7.62µm[.000150-.000300] BRIGHT TIN-LEAD ON, LEADS, ALL OVER 1.27µm[.000050] MINIMUM NICKEL
- 3 THESE DIMENSIONS PERTAIN TO CAVITY CENTERLINES ONLY NOT TO CONTACT LOCATIONS
- 4 MARK PART NUMBER AND DATE CODE, IN APPROXIMATE LOCATION SHOWN, EITHER SIDE.
- 5 TOLERANCE IS NON-CUMULATIVE.
- 6 2 POSITION DATE CODE IS MARKED OPPOSITE SIDE OF TE CONNECTIVITY LOGO.
- 7 POINT OF MEASUREMENT DIMENSION FOR PLATING THICKNESS (INSIDE CONTACT BEAM).
- 8 POINT-OF-CONTACT DIMENSION.
- 9 ø5.51[.217] MIN TARGET AREA FOR VACUUM PICK UP. COVER TO BE REMOVED AFTER SOLDERING.
- 10 PACKAGED IN TAPE & REEL PER EIA 481 SPECIFICATION.
- 11 TE CONNECTIVITY TRADEMARK AND CSA LOGO ARE MOLDED INTO HOUSING.
- 12 NO PART NUMBER REQUIRED ON THIS PART.
- 13 CONTACT: DUPLEX PLATE CONNECTIVITYD 0.76µm[.000030] GOLD IN CONTACT AREA, 3.81-7.62µm[.000150-.000300] MATTE TIN ON LEADS, ALL OVER 1.27µm[.000050] MINIMUM NICKEL.
- 14 ROHS 2002/95/EC COMPLIANT.
- 15 SUPERRSEDED BY 6-147105-5
- 16 SUPERRSEDED BY 6-147105-8
- 17 SUPERRSEDED BY 7-147105-2
- 18 SUPERRSEDED BY 8-147105-0

120mm	99.06[3.900]	101.60[4.000]	80	9-147105-0	
	96.52[3.800]	99.06[3.900]	78	8-147105-9	
	93.98[3.700]	96.52[3.800]	76	8-147105-8	
	91.44[3.600]	93.98[3.700]	74	8-147105-7	
	88.90[3.500]	91.44[3.600]	72	8-147105-6	
	86.36[3.400]	88.90[3.500]	70	8-147105-5	
	83.82[3.300]	86.36[3.400]	68	8-147105-4	
	81.28[3.200]	83.82[3.300]	66	8-147105-3	
	78.74[3.100]	81.28[3.200]	64	8-147105-2	
	76.20[3.000]	78.74[3.100]	62	8-147105-1	
	73.66[2.900]	76.20[3.000]	60	8-147105-0	
	71.12[2.800]	73.66[2.900]	58	7-147105-9	
88mm	68.58[2.700]	71.12[2.800]	56	7-147105-8	
	66.04[2.600]	68.58[2.700]	54	7-147105-7	
	63.50[2.500]	66.04[2.600]	52	7-147105-6	
	60.96[2.400]	63.50[2.500]	50	7-147105-5	
	58.42[2.300]	60.96[2.400]	48	7-147105-4	
72mm	55.88[2.200]	58.42[2.300]	46	7-147105-3	
	53.34[2.100]	55.88[2.200]	44	7-147105-2	
	50.80[2.000]	53.34[2.100]	42	7-147105-1	
	48.26[1.900]	50.80[2.000]	40	7-147105-0	
	45.72[1.800]	48.26[1.900]	38	6-147105-9	
	43.18[1.700]	45.72[1.800]	36	6-147105-8	
	40.64[1.600]	43.18[1.700]	34	6-147105-7	
	38.10[1.500]	40.64[1.600]	32	6-147105-6	
	35.56[1.400]	38.10[1.500]	30	6-147105-5	
	33.02[1.300]	35.56[1.400]	28	6-147105-4	
44mm	30.48[1.200]	33.02[1.300]	26	6-147105-3	
	27.94[1.100]	30.48[1.200]	24	6-147105-2	
	25.40[1.000]	27.94[1.100]	22	6-147105-1	
	22.86[.900]	25.40[1.000]	20	6-147105-0	
	20.32[.800]	22.86[.900]	18	5-147105-9	
	17.78[.700]	20.32[.800]	16	5-147105-8	
	15.24[.600]	17.78[.700]	14	5-147105-7	
	12.70[.500]	15.24[.600]	12	5-147105-6	
	10.16[.400]	12.70[.500]	10	5-147105-5	
	7.62[.300]	10.16[.400]	8	5-147105-4	
	5.08[.200]	7.62[.300]	6	5-147105-3	
	2.54[.100]	5.08[.200]	4	5-147105-2	
24mm	-	2.54[.100]	2	5-147105-1	
FINISH	EIA TAPE WIDTH	B	A	NO.OF POSN.	PART NUMBER

12/6 OBSOLETE

THIS DRAWING IS A CONTROLLED DOCUMENT.		DWN M.BINNER 06NOV02	 TE Connectivity	
DIMENSIONS: mm [INCHES]		CHK J.OLSON 06NOV02		
TOLERANCES UNLESS OTHERWISE SPECIFIED:		APVD J.OLSON 06NOV02	NAME	
0 PLC ± -		PRODUCT SPEC	RECEPTACLE ASSEMBLY, MOD IV, DOUBLE ROW, DUAL ENTRY, .100X.100CL, SURFACE MOUNT, AMPMODU	
1 PLC ± -		APPLICATION SPEC	SIZE	CAGE CODE
2 PLC ± .005[0.13]		108-25022	DRAWING NO	RESTRICTED TO
3 PLC ± -		WEIGHT 114-25018	A2 00779	147105
4 PLC ± -		CUSTOMER DRAWING	SCALE 1:1	SHEET 2 OF 2
ANGLES ± -			REV	J9
FINISH SEE TABLE				

Mouser Electronics

Authorized Distributor

Click to View Pricing, Inventory, Delivery & Lifecycle Information:

[TE Connectivity:](#)

[147105-5](#)