



*Quality Products. Service Excellence.*

## ABS Plastic Multi-Purpose Enclosures w/ PC Board Standoffs *1591XX Series*

Flame Retardant, General Purpose, Flanged Lid Options

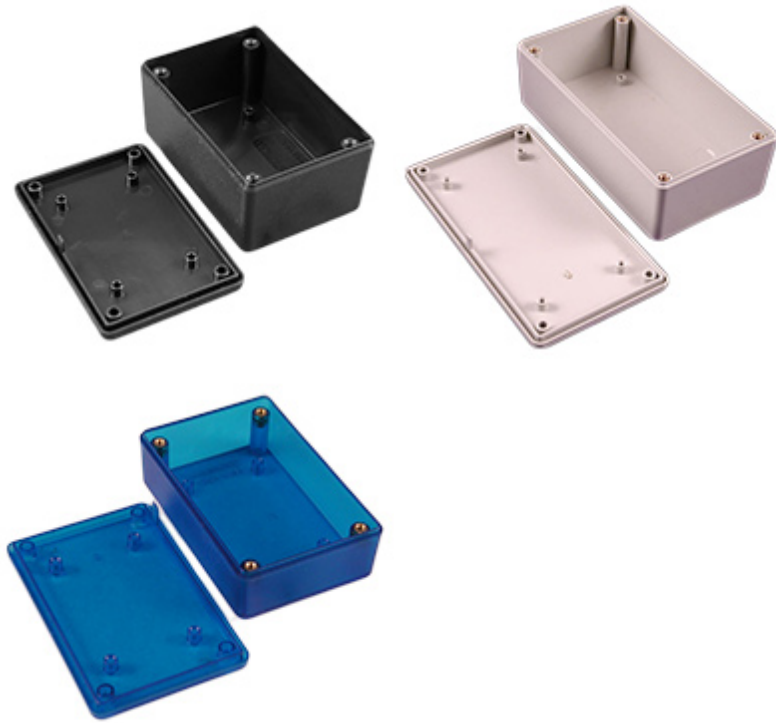


### Key Features

- Ideally suited for mounting printed circuit boards horizontally.
- Internal sides of enclosure are smooth for easy connector installation except for the largest enclosure. 1591XXF. 1591XXF size is a universal type which includes P.C.board standoffs in the lid and enclosure PLUS includes card guides.
- Strong tongue and groove lid to box construction provides protection against access of dust and splashing water.
- Designed to meet IP54.
- Lid and box both contain - molded in PC board standoffs.
- Standard black and gray versions molded from easy to machine, flame retardant ABS plastic (material carries a UL flammability rating of 94V-0).
- Transparent blue and all economy versions are molded from general purpose (not flame-retardant) plastic.
- Stocked in satin texture black and grey.
- On standard versions, the lid is secured with M3 x 10 mm Phillips machine screws threaded into integral brass bushings. Perfect for applications with repetitive assembly and disassembly are required.
- Economy versions are assembled with self tapping screws into fully plastic posts.
- Black and transparent blue enclosures include black screws, gray enclosures include nickel plated screws.

### Photo Features

Available in black, gray, or transparent blue. PC board mounting bosses located inside the box and lid.



Also available with mounting flanges integrated into the lid (black and gray only)

Accessory flanges are also available (sold separately from enclosures).



**Enclosures Without Mounting Flanges**

| Flame Retardant Plastic<br>w/ Brass Screw Inserts |           | General Purpose ABS<br>w/ Brass Screw Inserts |  | General Purpose ABS<br>w/ Self Tapping Screws | Length | Width | Enclosure<br>Depth<br>(Less Lid) |
|---|-----------|---|--|---|--------|-------|----------------------------------|
| Black   | Gray      | Transparent Blue                              |  | Black   |        |       |                                  |
| 1591XXMBK   | 1591XXMGY | 1591XXMTBU                                    |  | 1591XXMSBK                                    | 3.30   | 2.20  | 0.90                             |
| 1591XXLBK   | 1591XXLGY | 1591XXLTBU                                    |  | 1591XXLSBK                                    | 3.40   | 2.20  | 1.40                             |
| 1591XXABK   | 1591XXAGY | 1591XXATBU                                    |  | 1591XXASBK                                    | 3.90   | 2.00  | 0.80                             |
| 1591XXSBK   | 1591XXSGY | 1591XXSTBU                                    |  | 1591XXSSBK                                    | 4.30   | 3.20  | 1.60                             |
| 1591XXBBK   | 1591XXBGY | 1591XXBTBU                                    |  | 1591XXBSBK                                    | 4.40   | 2.50  | 1.10                             |
| 1591XXCBK   | 1591XXCGY | 1591XXCTBU                                    |  | 1591XXCSBK                                    | 4.70   | 2.60  | 1.40                             |
| 1591XXTBK   | 1591XXTGY | 1591XXTTBU                                    |  | 1591XXTSBK                                    | 4.80   | 3.20  | 2.20                             |
| 1591XXGBK   | 1591XXGGY | 1591XXGTBU                                    |  | 1591XXGSBK                                    | 4.80   | 3.70  | 1.40                             |
| 1591XXUBK   | 1591XXUGY |   |  | 1591XXUSBK                                    | 4.86   | 4.86  | 2.25                             |
| 1591XXDBK   | 1591XXDGY | 1591XXDTBU                                    |  | 1591XXDSBK                                    | 6.00   | 3.20  | 1.80                             |
| 1591XXEBK   | 1591XXEGY | 1591XXETBU                                    |  | 1591XXESBK                                    | 7.60   | 4.40  | 2.20                             |
| 1591XXFBK   | 1591XXFGY |   |  | 1591XXFSBK                                    | 8.70   | 5.90  | 2.30                             |

## Enclosures With Mounting Flanges

| Flame Retardant Plastic<br>w/ Brass Screw Inserts |             | General Purpose ABS<br>w/ Self Tapping Screws |  | Length | Width | Enclosure<br>Depth<br>(Less Lid) |
|---|-------------|---|--|--------|-------|----------------------------------|
| Black   | Gray        | Black   |  |        |       |                                  |
| 1591XXMFLBK                                       | 1591XXMFLGY | 1591XXMSFLBK                                  |  | 3.30   | 2.20  | 0.90                             |
| 1591XXLFLBK                                       | 1591XXLFLGY | 1591XXLSFLBK                                  |  | 3.40   | 2.20  | 1.40                             |
| 1591XXAFLBK                                       | 1591XXAFLGY | 1591XXASFLBK                                  |  | 3.90   | 2.00  | 0.80                             |
| 1591XXSFLBK                                       | 1591XXSFLGY | 1591XXSSFLBK                                  |  | 4.30   | 3.20  | 1.60                             |
| 1591XXBFLBK                                       | 1591XXBFLGY | 1591XXBSFLBK                                  |  | 4.40   | 2.50  | 1.10                             |
| 1591XXCFLBK                                       | 1591XXCFLGY | 1591XXCSFLBK                                  |  | 4.70   | 2.60  | 1.40                             |
| 1591XXTFLBK                                       | 1591XXTFLGY | 1591XXTSFLBK                                  |  | 4.80   | 3.20  | 2.20                             |
| 1591XXGFLBK                                       | 1591XXGFLGY | 1591XXGSFLBK                                  |  | 4.80   | 3.70  | 1.40                             |
| 1591XXUFLBK                                       | 1591XXUFLGY | 1591XXUSFLBK                                  |  | 4.86   | 4.86  | 2.25                             |
| 1591XXDFLBK                                       | 1591XXDFLGY | 1591XXDSFLBK                                  |  | 6.00   | 3.20  | 1.80                             |
| 1591XXEFLBK                                       | 1591XXEFLGY | 1591XXESFLBK                                  |  | 7.60   | 4.40  | 2.20                             |
| 1591XXFFLBK                                       | 1591XXFFLGY | 1591XXFSFLBK                                  |  | 8.70   | 5.90  | 2.30                             |

Tags: project box

*Data subject to change without notice*

© 2018. Hammond Manufacturing Ltd. All rights reserved.

# Mouser Electronics

Authorized Distributor

Click to View Pricing, Inventory, Delivery & Lifecycle Information:

## Hammond:

[1591XXCSFLBK](#) [1591XXGBK](#) [1591XXGSFLBK](#) [1591XXGTBU](#) [1591XXMFLBK](#) [1591XXMFLGY](#) [1591XXMGY](#)  
[1591XXMSBK](#) [1591XXMTBU](#) [1591XXSFLBK](#) [1591XXSSBK](#) [1591XXSSFLBK](#) [1591XXSTBU](#) [1591XXABK](#)  
[1591XXAFLBK](#) [1591XXAFLGY](#) [1591XXAGY](#) [1591XXATBU](#) [1591XXBBK](#) [1591XXBFLBK](#) [1591XXBFLGY](#)  
[1591XXBGY](#) [1591XXBTBU](#) [1591XXCBK](#) [1591XXCFLBK](#) [1591XXCFLGY](#) [1591XXCGY](#) [1591XXCTBU](#) [1591XXDBK](#)  
[1591XXDFLBK](#) [1591XXDFLGY](#) [1591XXDGY](#) [1591XXDTBU](#) [1591XXEBK](#) [1591XXEFLBK](#) [1591XXEFLGY](#)  
[1591XXEGY](#) [1591XXETBU](#) [1591XXFBK](#) [1591XXFFLBK](#) [1591XXFFLGY](#) [1591XXFGY](#) [1591XXFSBK](#)  
[1591XXFSFLBK](#) [1591XXLBK](#) [1591XXLFLBK](#) [1591XXLFLGY](#) [1591XXLGY](#) [1591XXLTBU](#) [1591XXTBK](#)  
[1591XXTFLBK](#) [1591XXTFLGY](#) [1591XXTGY](#) [1591XXTTBU](#) [1591XXESFLBK](#) [1591XXCSBK](#) [1591XXESBK](#)  
[1591XXASFLBK](#) [1591XXDSFLBK](#) [1591XXTSFLBK](#) [1591XXBSBK](#) [1591XXTSBK](#) [1591XXLSFLBK](#) [1591XXDSBK](#)  
[1591XXLSBK](#) [1591XXASBK](#) [1591XXBSFLBK](#) [1591XXMBK](#) [1591XXGFLBK](#) [1591XXSBK](#) [1591XXGFLGY](#)  
[1591XXMSFLBK](#) [1591XXGGY](#) [1591XXGSBK](#) [1591XXSGY](#) [1591XXSFLGY](#) [1591XXUFLBK](#) [1591XXUSFLBK](#)  
[1591XXUGY](#) [1591XXUBK](#) [1591XXUFLGY](#) [1591XXUSBK](#)