



RADIALL®
COAXIAL department

TECHNICAL DATA

R280.751.000

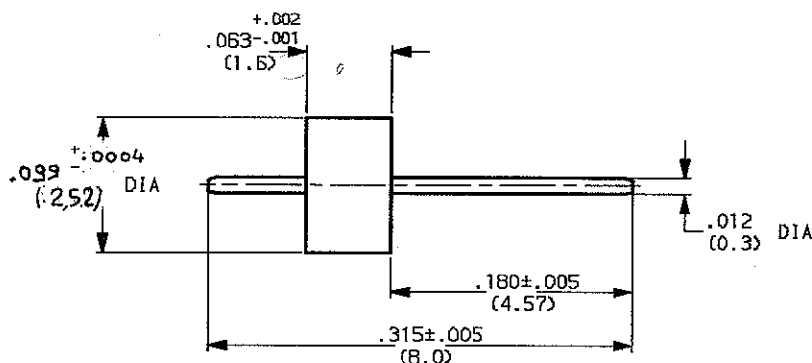
Issue : 0449 B

Page

GLASS SEAL PIN .012(0.30) DIA

SERIES: ACC

1 / 3



MOUNTING HOLE

See page 2 and 3.

WEIGHT 0.007 oz (0.2g)

CABLES : -

CHARACTERISTICS

NOMINAL IMPEDANCE	50 Ω
FREQUENCY RANGE	0-18 GHz
TEMPERATURE RATING	-55/+200 °C
VSWR	1.02 + 0.003 MF (GHz) Max (Applicable for mounting B (see page 3))
RF INSERTION LOSS	NA IF dB Maxi
VOLTAGE RATING	335 Vrms Maxi
DIELECTRIC WITHSTANDING VOLTAGE	1000 Vrms mini
INSULATION RESISTANCE	NA Mo mini
HERMETIC SEAL	10-8 cc/s Atm.cm3/s
LEAKAGE (pressurized only)	NA psi MPa

STANDARDISATION

CABLE RETENTION

NA Lb mini
N

CENTER CONTACT RETENTION

Axial force - mating end 4.5 Lb mini
20 N

Axial force - opposite end 4.5 Lb mini
20 N

Torque (Min) NA Inch.oz
cm.N

RECOMMENDED TORQUES

Mating	NA inch.Lb cm.N
Panel nut	NA inch.Lb cm.N
Clamp nut	NA inch.Lb cm.N

CONSTRUCTION

CONNECTOR PARTS	MATERIALS	FINISH
BODY	-	-
OUTER CONTACT	FERRO-NICKEL	GOLD OVER NICKEL
CENTER CONTACT	FERRO-NICKEL	GOLD OVER NICKEL
INSULATORS	MATCHED GLASS	-
-	-	-
-	-	-
-	-	-
-	-	-
-	-	-

ISSUE	REVISION No	DESCRIPTION	BY	DATE
-	-	-	-	-
-	-	-	-	-
9731	97.05.013	Ø 2.51 → Ø 2.52 (VICARD)	TRIPIER	28.07.97

Initiated on 06.NOV.97

Superseded on

The information given here is subject to change without notice. Design changes may be in order to improve the product.

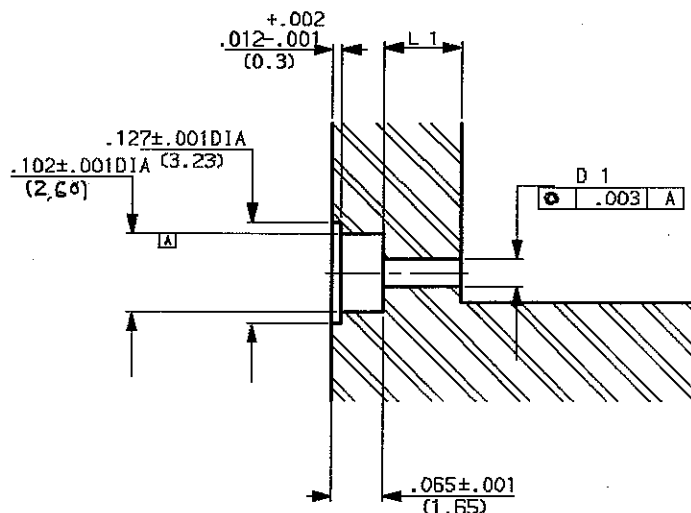


SOLDER GLASS SEAL PIN .012 (0.30) DIA

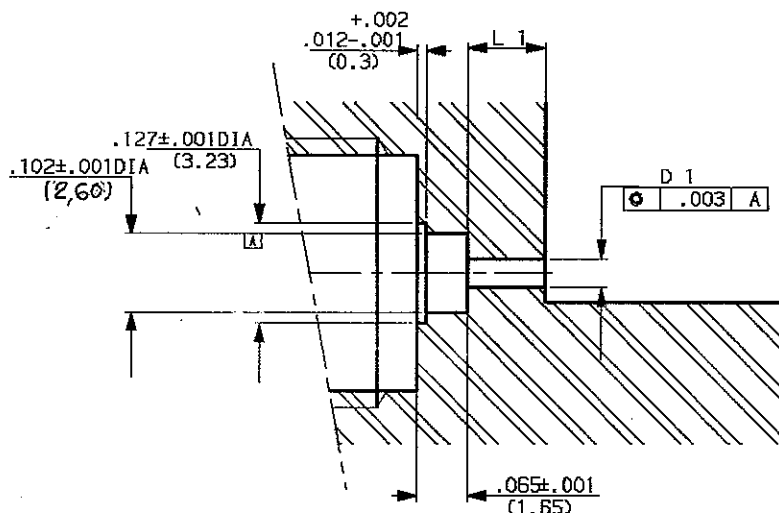
SERIES: ACC

RECOMMENDED MOUNTING HOLE DETAIL

FLANGE RECEPTACLE



RECEPTACLE SCREW



D1 and L1 dimensions have to be determined according to each application.

We advise of two following case: (see page 3)

- using of the R280 469 removable socket :

D1 = .079 + or -.0008

L1 = .1 + or -.004

- the bead pin is directly welded on the track :

D1 = .0276 + or -.0008

L1 = from .040 to .157 according to customer's design criteria.

ISSUE	REVISION No	DESCRIPTION	BY	DATE
9731	97.05.013	Dia 2.59 → DIA 2.60	TRIPIER	28.07.97

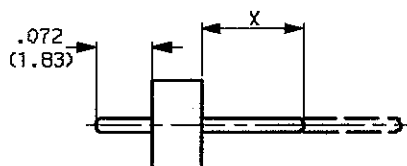
Initiated on 06-Nov-97

Superseded on

The information given here is subject to change without notice. Design changes may be in order to improve the product.

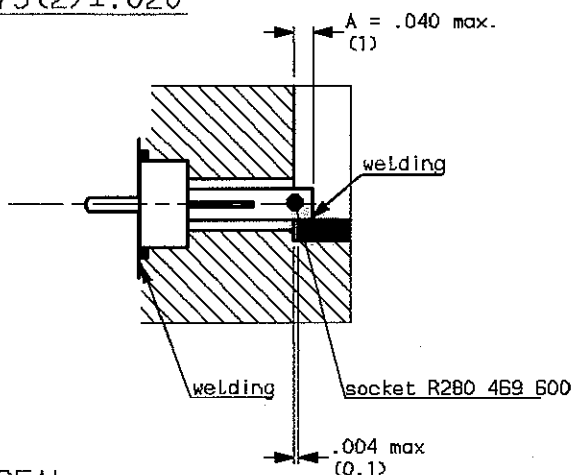


ASSEMBLY INSTRUCTIONS



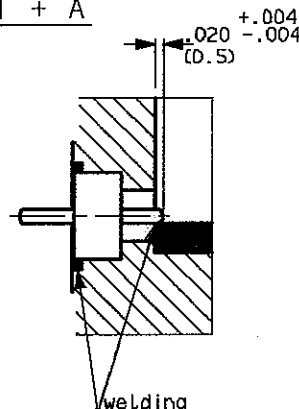
MOUNTING A: WITH REMOVABLE CONTACT

$$X = .079(2) \pm .020$$



MOUNTING B: WITH SEAL ONLY

$$X = L1 + A$$



GLASS SEAL

- 1 - Adjust X by cutting the pin if necessary.
- 2 - Introduce the glass bead into its housing as here above (with the mounted socket)
- 3 - Weld the ring by putting a welding wire in the groove.
- 4 - Weld the pin (or socket) on the track. Beware of putting too much welding!

IMPORTANT: for maximum RF characteristics the Link track/pin must be as thin as possible. We advise you to respect rigorously the A dimension, by welding accurately the bead pin directly on the track (right drawing).

CONNECTOR

- FLANGE RECEPTACLE: Set up the EMI gasket in the connector groove.
Put the connector on the housing while introducing the bead pin into socket, then mount the fixtures of the flange.
- SCREW RECEPTACLE: Screw the connector into the housing.
(Tooling and torque, see the following board)

TOOLING		TORQUE
SMA	Jack receptacle R282.341.010	17 inch-pounds
	Plug receptacle R282.342	
BMA	Jack receptacle R282.322	25 inch-pounds
	Plug receptacle R282.340	

ISSUE	REVISION No	DESCRIPTION	BY	DATE
.
.
.
.

Initiated on 06.Nov.91

Superseded on

The information given here is subject to change without notice. Design changes may be in order to improve the product.



Mouser Electronics

Authorized Distributor

Click to View Pricing, Inventory, Delivery & Lifecycle Information:

Radial:

[R280751000](#)