

NOTES

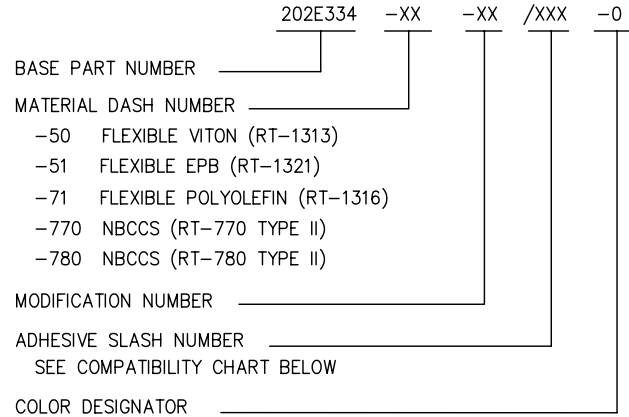
1. ALL DIMENSIONS ARE IN $\frac{\text{INCHES}}{[\text{MILLIMETERS}]}$

2. DIMENSIONS APPEARING IN TABLE ARE AS FOLLOWS:

- a - AS SUPPLIED
- b - AFTER UNRESTRICTED RECOVERY

3 COATING (ADHESIVE): IS OPTIONAL AS SUPPLIED DIMENSIONS APPEARING IN TABLE ARE FOR UNCOATED PARTS. WHEN COATING IS ADDED, ENTRY DIAMETER WILL BE REDUCED BY .06 MAX.

4. ORDERING INFORMATION:



- 50 FLEXIBLE VITON (RT-1313)
- 51 FLEXIBLE EPB (RT-1321)
- 71 FLEXIBLE POLYOLEFIN (RT-1316)
- 770 NBCCS (RT-770 TYPE II)
- 780 NBCCS (RT-780 TYPE II)

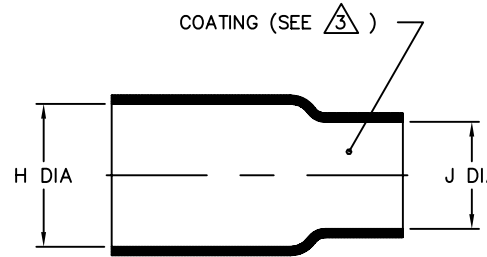
MODIFICATION NUMBER

ADHESIVE SLASH NUMBER
SEE COMPATIBILITY CHART BELOW

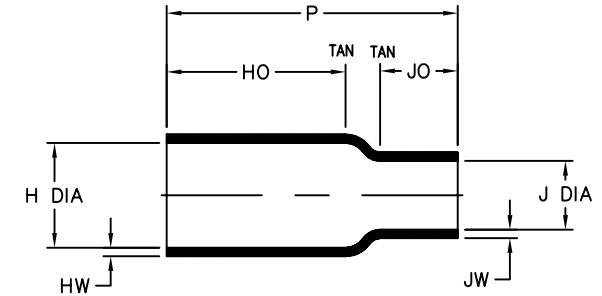
COLOR DESIGNATOR

If this document is printed it becomes uncontrolled. Check for the latest revision

REVISIONS		
LTR	DESCRIPTION	DATE
T	ECO-09-016592	07/15/2009



AS SUPPLIED



AFTER UNRESTRICTED RECOVERY

TABLE OF DIMENSIONS

PART DESCRIPTION	H		J		P ±10% b	HO ±10% b	JO ±10% b	HW ±25% b	JW ±25% b
	MIN	MAX	MIN	MAX					
	a	b	a	b					
202E334	.50 [12,7]	.42 [10,7]	.44 [11,2]	.11 [2,8]	2.50 [63,5]	1.62 [41,1]	.62 [15,7]	.06 [1,52]	.06 [1,52]
202E336	.82 [20,8]	.42 [10,7]	.81 [20,6]	.21 [5,3]	2.50 [63,5]	1.62 [41,1]	.65 [16,5]	.06 [1,52]	.06 [1,52]
202E344	.87 [22,1]	.74 [18,8]	.44 [11,2]	.10 [2,5]	2.10 [53,3]	1.10 [27,9]	.62 [15,7]	.09 [2,29]	.06 [1,52]
202E346	.87 [22,1]	.74 [18,8]	.81 [20,6]	.31 [7,9]	2.10 [53,3]	1.10 [27,9]	.55 [14,0]	.09 [2,29]	.06 [1,52]

COMPATIBILITY CHART

MATERIAL DASH NO.	ADHESIVE (COATING) SLASH NO.	ADHESIVE (COATING) S NO.
-50	N/A	N/A
-51	/86; /164; /180	S-1048; S-1124; S-1030
-71	/42; /86; /180	S-1017; S-1048; S-1030
-770	N/A	N/A
-780	N/A	N/A

UNLESS OTHERWISE SPECIFIED DIMENSIONS ARE INCHES. METRIC DIMENSIONS ARE IN BRACKETS.

DECIMAL TOLERANCES
.XXX ± 0.005 [0.13 mm]
.XX ± 0.01 [0.25 mm]
.X ± 0.1 [0.50 mm]

ANGLE TOLERANCE
.X ± 1 DEG.

TYCO ELECTRONICS RESERVES THE RIGHT TO AMEND THIS DRAWING AT ANY TIME. USERS SHOULD EVALUATE THE SUITABILITY OF THE PRODUCT FOR THEIR APPLICATION.

© 2008-2009 Tyco Electronics Corporation. All rights reserved.

DRAWN
YUNGUYEN
APPROVED
STRAN

THIRD ANGLE PROJECTION

Tyco Electronics

Raychem Molded Parts
305 Constitution Dr
Menlo Park, CA 94025

TITLE
BOOT, STRAIGHT

SIZE B CODE IDENT. NO. 06090 DWG. NO. 202E334thru346

DO NOT SCALE THIS DRAWING

SHEET 1 OF 1

Mouser Electronics

Authorized Distributor

Click to View Pricing, Inventory, Delivery & Lifecycle Information:

[TE Connectivity:](#)

[202E344-51/164-0](#)