

## Base strip - MC 1,5/14-GF-3,81 - 1827981

Please be informed that the data shown in this PDF Document is generated from our Online Catalog. Please find the complete data in the user's documentation. Our General Terms of Use for Downloads are valid (<http://phoenixcontact.com/download>)

Header, Nominal current: 8 A, Rated voltage (III/2): 160 V, Number of positions: 14, Pitch: 3.81 mm, Color: green, Contact surface: Tin, Mounting: Wave soldering




The figure shows a 10-position version of the product

### Product Features

- Low-profile pin strips with compact pitches
- Plug-in direction parallel and vertical to the PCB
- Individual position coding by inserting coding profiles



### Key Commercial Data

|                                      |   |
|--------------------------------------|---|
| Packing unit                         | 1 pc  |
| GTIN                                 | <br>4 017918 050436 |
| Weight per Piece (excluding packing) | 4.76 g  |
| Custom tariff number                 | 85366990  |
| Country of origin                    | Germany   |

### Technical data

#### Dimensions

|                       |          |
|-----------------------|----------|
| Length                | 9.2 mm   |
| Pitch                 | 3.81 mm  |
| Dimension a           | 49.53 mm |
| Width                 | 63.73 mm |
| Constructional height | 7.25 mm  |
| Height                | 10.65 mm |

## Base strip - MC 1,5/14-GF-3,81 - 1827981

### Technical data

#### Dimensions

|                          |              |
|--------------------------|--------------|
| Length of the solder pin | 3.4 mm       |
| Pin dimensions           | 0,8 x 0,8 mm |
| Hole diameter            | 1.2 mm       |

#### General

|  |               |
|--|---------------|
| Range of articles                      | MC 1,5/...-GF |
| Insulating material group              | IIIa          |
| Rated surge voltage (III/3)            | 2.5 kV        |
| Rated surge voltage (III/2)            | 2.5 kV        |
| Rated surge voltage (II/2)             | 2.5 kV        |
| Rated voltage (III/3)                  | 160 V         |
| Rated voltage (III/2)                  | 160 V         |
| Rated voltage (II/2)                   | 250 V         |
| Connection in acc. with standard       | EN-VDE        |
| Nominal current I <sub>N</sub>         | 8 A           |
| Maximum load current                   | 8 A           |
| Insulating material                    | PBT           |
| Flammability rating according to UL 94 | V0            |
| Color                                  | green         |
| Number of positions                    | 14            |

#### Standards and Regulations

|  |        |
|--|--------|
| Connection in acc. with standard       | EN-VDE |
|  | CSA    |
| Flammability rating according to UL 94 | V0     |

### Classifications

#### eCl@ss

|            |          |
|------------|----------|
| eCl@ss 4.0 | 272607xx |
| eCl@ss 4.1 | 27260701 |
| eCl@ss 5.0 | 27260701 |
| eCl@ss 5.1 | 27260701 |
| eCl@ss 6.0 | 27260704 |
| eCl@ss 7.0 | 27440402 |
| eCl@ss 8.0 | 27440402 |
| eCl@ss 9.0 | 27440402 |

# Base strip - MC 1,5/14-GF-3,81 - 1827981

## Classifications

### ETIM

|          |          |
|----------|----------|
| ETIM 3.0 | EC001121 |
| ETIM 4.0 | EC002637 |
| ETIM 5.0 | EC002637 |

### UNSPSC

|               |          |
|---------------|----------|
| UNSPSC 6.01   | 30211810 |
| UNSPSC 7.0901 | 39121409 |
| UNSPSC 11     | 39121409 |
| UNSPSC 12.01  | 39121409 |
| UNSPSC 13.2   | 39121409 |

## Approvals

### Approvals

#### Approvals

CSA / VDE Gutachten mit Fertigungsüberwachung / IECEx CB Scheme / CCA / EAC / cULus Recognized / EAC

#### Ex Approvals

#### Approvals submitted

### Approval details

|   |       |       |
|---|-------|-------|
| CSA  |       |       |
|   | B     | D     |
| Nominal current I <sub>N</sub>  | 8 A   | 8 A   |
| Nominal voltage U <sub>N</sub>  | 300 V | 300 V |

|   |     |
|---|-----|
| VDE Gutachten mit Fertigungsüberwachung  |     |
| Nominal current I <sub>N</sub>  | 8 A |

# Base strip - MC 1,5/14-GF-3,81 - 1827981

## Approvals

|                    |       |
|--------------------|-------|
| Nominal voltage UN | 160 V |
|--------------------|-------|

|                    |       |
|--------------------|-------|
| IECEE CB Scheme    |       |
| Nominal current IN | 8 A   |
| Nominal voltage UN | 160 V |

|                    |       |
|--------------------|-------|
| CCA                |       |
| Nominal current IN | 8 A   |
| Nominal voltage UN | 160 V |

|     |
|-----|
| EAC |
|-----|

|                    |       |       |
|--------------------|-------|-------|
| cULus Recognized   |       |       |
|                    | B     | D     |
| Nominal current IN | 8 A   | 8 A   |
| Nominal voltage UN | 300 V | 300 V |

|     |
|-----|
| EAC |
|-----|

## Accessories

Accessories

Coding element

Coding profile - CP-MSTB - 1734634

Coding profile, is inserted into the slot on the plug or inverted header, red insulating material



Labeled terminal marker

## Base strip - MC 1,5/14-GF-3,81 - 1827981

### Accessories

Marker card - SK 3,81/2,8:FORTL.ZAHLEN - 0804109



Marker card, Card, white, labeled, Horizontal: Consecutive numbers 1 - 10, 11 - 20, etc. up to 91 - (99)100, Mounting type: Adhesive, for terminal block width: 3.81 mm, Lettering field: 3.81 x 2.8 mm

---

Fiber optics - MC 1,5/10-LWL 1,5-3,81 - 1841174

Fiber optics, Pitch: 3.81 mm, Number of positions: 10, Dimension a: 1.5 mm, Color: transparent



---

Fiber optics - MC 1,5/10-LWL 2,3-3,81 - 1841190

Fiber optics, Pitch: 3.81 mm, Number of positions: 10, Dimension a: 2.3 mm, Color: transparent



---

Fiber optics - MC 1,5/10-LWL 4-3,81 - 1841213

Fiber optics, Pitch: 3.81 mm, Number of positions: 10, Dimension a: 4 mm, Color: transparent



---

### Additional products

Printed-circuit board connector - FMC 1,5/14-STF-3,81 - 1748477



Plug component, Nominal current: 8 A, Rated voltage (III/2): 160 V, Number of positions: 14, Pitch: 3.81 mm, Connection method: Push-in spring connection, Color: green, Contact surface: Tin

## Base strip - MC 1,5/14-GF-3,81 - 1827981

### Accessories

#### Printed-circuit board connector - MC 1,5/14-STF-3,81 - 1827826

Plug component, Nominal current: 8 A, Rated voltage (III/2): 160 V, Number of positions: 14, Pitch: 3.81 mm, Connection method: Screw connection with tension sleeve, Color: green, Contact surface: Tin



#### Printed-circuit board connector - MCVR 1,5/14-STF-3,81 - 1828469

Plug component, Nominal current: 8 A, Rated voltage (III/2): 160 V, Number of positions: 14, Pitch: 3.81 mm, Connection method: Screw connection with tension sleeve, Color: green, Contact surface: Tin



#### Printed-circuit board connector - MCVW 1,5/14-STF-3,81 - 1828618

Plug component, Nominal current: 8 A, Rated voltage (III/2): 160 V, Number of positions: 14, Pitch: 3.81 mm, Connection method: Screw connection with tension sleeve, Color: green, Contact surface: Tin



#### Printed-circuit board connector - FRONT-MC 1,5/14-STF-3,81 - 1850974

Plug component, Nominal current: 8 A, Rated voltage (III/2): 160 V, Number of positions: 14, Pitch: 3.81 mm, Connection method: Front screw connection, Color: green, Contact surface: Tin



#### Printed-circuit board connector - FK-MCP 1,5/14-STF-3,81 - 1851355

Plug component, Nominal current: 8 A, Rated voltage (III/2): 160 V, Number of positions: 14, Pitch: 3.81 mm, Connection method: Push-in spring connection, Color: green, Contact surface: Tin



# Base strip - MC 1,5/14-GF-3,81 - 1827981

## Accessories

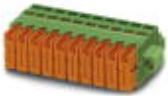
Printed-circuit board connector - MCC 1/14-STZF-3,81 - 1852480

Plug component, Nominal current: 8 A, Rated voltage (III/2): 160 V, Number of positions: 14, Pitch: 3.81 mm, Connection method: Crimp connection, Color: green, Corresponding female crimp contacts with current [A] and conductor cross section range [mm<sup>2</sup>] data: 5A/MCC-MT 0,2-0,35 (1859988); 8A/MCC-MT 0,5-1,0 (1859991)



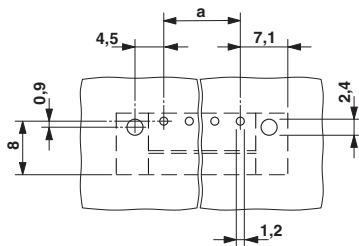
Printed-circuit board connector - QC 0,5/14-STF-3,81 - 1897665

Plug component, Nominal current: 6 A, Rated voltage (III/2): 200 V, Number of positions: 14, Pitch: 3.81 mm, Connection method: Displacement connection, Color: green, Contact surface: Tin

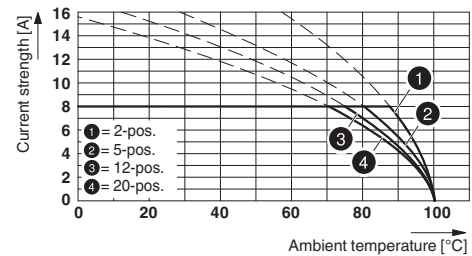


## Drawings

Drilling diagram

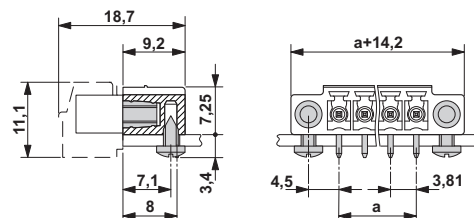


Diagram



Type: MC 1,5/...-STF-3,81 with MC 1,5/...-GF-3,81

Dimensional drawing







# Mouser Electronics

Authorized Distributor

Click to View Pricing, Inventory, Delivery & Lifecycle Information:

[Phoenix Contact:](#)

[1827981](#)