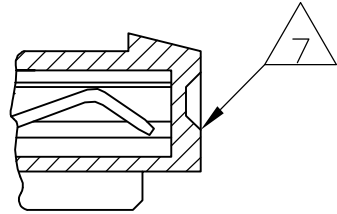
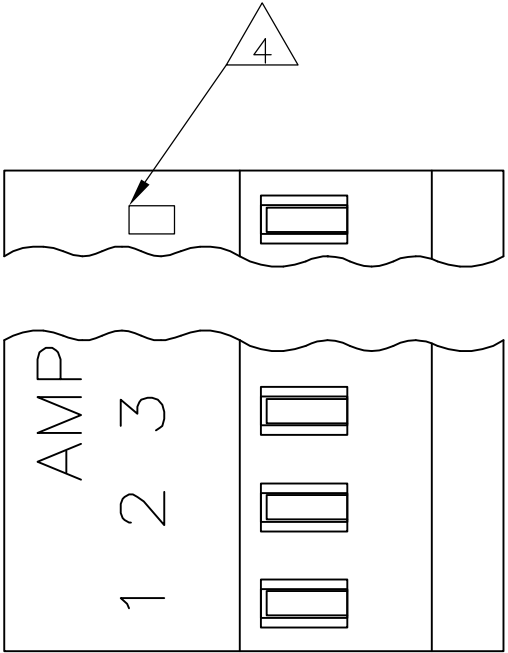
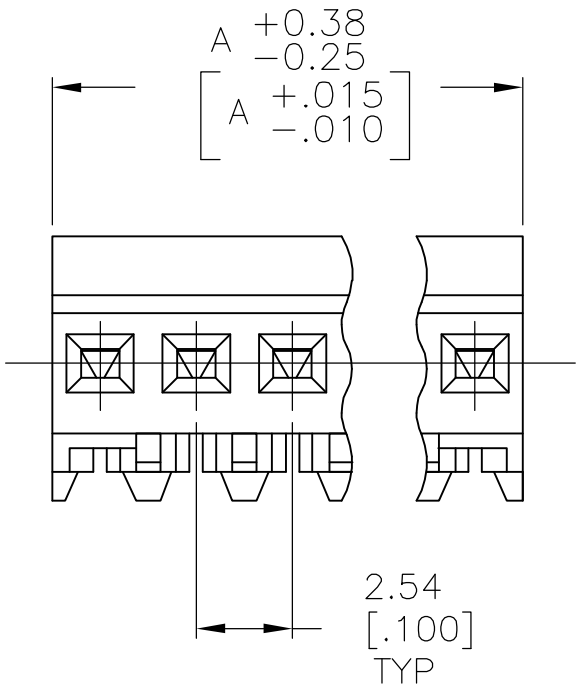
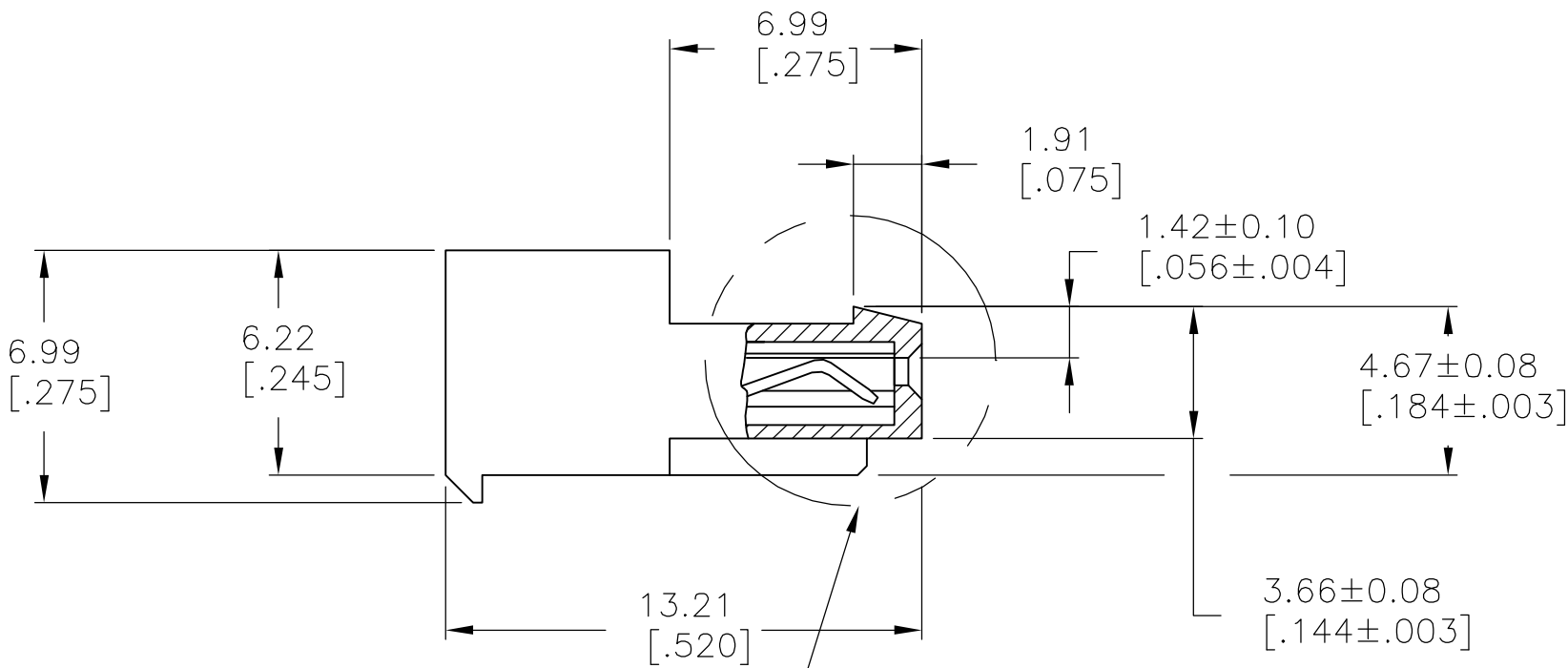


LOC	DIST	REVISIONS					
		P	LTR	DESCRIPTION	DATE	DWN	APVD
CM	00		J	REVISED PER ECO-07-003755	28FEB07	KW	DB



DETAIL A



TIN			
	17.78 [.700]	7	3-643586-7
TIN-LEAD			
	17.78 [.700]	7	643586-7
FINISH	DIM A	NO OF CIRCUITS	PART NO

- 1

MATERIAL: CONNECTOR - NYLON UL94V-2 (WHITE).
CONTACTS - 0.30[.012] THICK COPPER ALLOY
MATTE WHISKER MITIGATED TIN
0.00203[.000080] MIN THICKNESS
OVER NICKEL UNDERPLATE OR BRIGHT
TIN-LEAD 93/7 0.00203[.000080] MIN
THICKNESS. SEE FINISH COLUMN FOR
PLATING TYPE.
- 2

CONTACTS ACCEPT 24 AWG WIRE WITH 1.52[.060] MAX
INSULATION DIAMETER.
- 3

CONTACTS MUST ACCEPT 0.64±0.03[.025±.001]
POST AND REMAIN LOCKED IN POSITION.
- 4

IDENTIFICATION NUMBER FOR LAST CIRCUIT MAY
NOT APPEAR ON ALL ASSEMBLIES.
- 5

DIMENSIONS IN BRACKETS ARE IN INCHES.
- 6

HOUSING FEATURES ARE: CLOSED END WITH LOCKING RAMP.
- 7

DETAIL A SHOWS CIRCUIT NO.4 MOLDED CLOSED.

THIS DRAWING IS A CONTROLLED DOCUMENT.

DIMENSIONS:
mm [INCHES]

TOLERANCES UNLESS OTHERWISE SPECIFIED:

0 PLC	±	-
1 PLC	±	-
2 PLC	±	-
3 PLC	±	.13[.005]
4 PLC	±	-
ANGLES	±	-

MATERIAL

DWN
B. LEWIS
22APR91

CHK
R. SWING
22APR91

APVD
G. MILLER
22APR91

PRODUCT SPEC
108-1050

APPLICATION SPEC
114-1019

WEIGHT
-

CUSTOMER DRAWING

Tyco Electronics Corporation
Harrisburg, Pa 17105-3608

NAME
MTA-100 CONNECTOR ASSEMBLY,
24 AWG, NO.4 CIRCUIT CLOSED,
SPECIAL

SIZE
A2

CAGE CODE
00779

DRAWING NO
C=643586

RESTRICTED TO
-

SCALE 5:1
SHEET 1 OF 1
REV J

Mouser Electronics

Authorized Distributor

Click to View Pricing, Inventory, Delivery & Lifecycle Information:

[TE Connectivity:](#)

[643586-7](#)