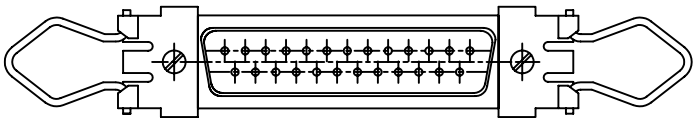
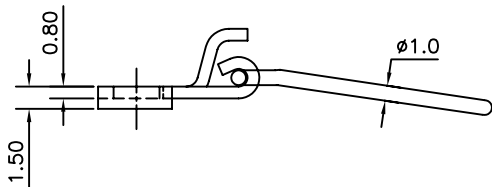
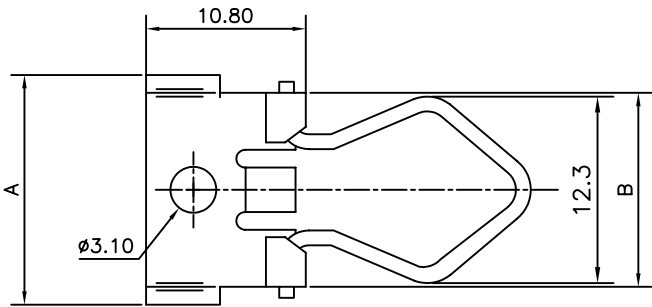


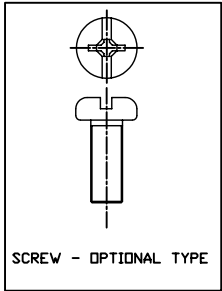
2	8630-3428	FOR 50P	17.1	15.3
1	8630-3427	FOR 09,15,25&37P	14.3	12.5
SL.NO.	PART NUMBER	DESCRIPTION	DIM A	DIM B

MALE LOCK



"This LF product meets European Union Directives and other country regulations as described in GS-22-008"

Packaging as per GS-14-920



MOUNTING – SCREW M3x7, LOCK WASHER AND NUT.

MATERIAL : STAINLESS STEEL

PLATING: NITRIC ACID PASSIVATION.

LF PART NOS FOR RoHS PRODUCTS

SCREW – BOTH HEAD TYPES ARE ALLOWED PER LOT FOR MALE AND FEMALE LEVERLOCKS

mat'l. code				surface ISO 1302 ✓	tolerance ISO 406 ISO 1101	projection 	product family D-SUB			
ltr	ecn no	dr	date	tolerances unless otherwise specified		MM 	title LEVER LOCKS			
B	106-0074	MINI	2006/06/08	angles	linear					
C	110-0061	AMR	2010/02/24	0°±1°						
				dr	MINI K VANDANATH	2001/07/10	<div> <div>FCI</div> <div>dwg no</div> <div>sheet 1 of 1</div> <div>size A4</div> </div>			
				enr	George V Joseph	2001/07/10				
				chr	Abhilash M R	2010/02/24				
				appo	Sudhir Varma	2010/02/24				
sheet index	revision	C					type Product Customer Drawing			
	sheet	1								

Mouser Electronics

Authorized Distributor

Click to View Pricing, Inventory, Delivery & Lifecycle Information:

[FCI / Amphenol:](#)

[86303427LF](#)