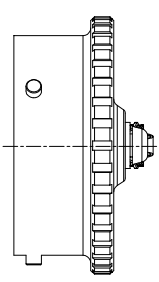
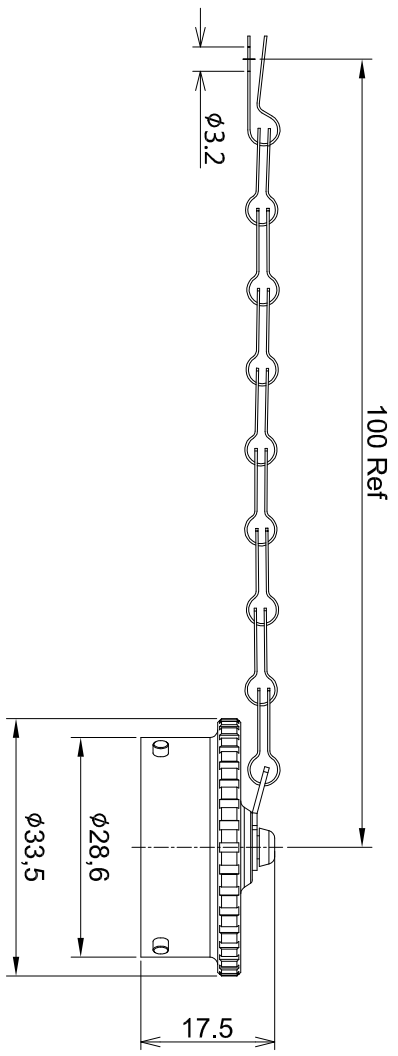


REVISIONS					
REV	ECO	DESCRIPTION	DATE	BY	APPR
A1	-	RELEASED DRAWING	Nov-21-2016	Ben	Tommy



- NOTES : (UNLESS OTHERWISE SPECIFIED)
- MATERIAL :
DUST CAP : AL ALLOY , NICKEL PLATED.
CHAIN : STAINLESS STEEL.
LOCATING RIVET : STAINLESS STEEL.
RIVET : COPPER ALLOY,NICKEL PLATING
GASKET : EPDM.
 - SPECIFICATIONS :
2.1 OPERATING TEMPERATURE : -40°C ~ +105°C.
2.2 IP--CLASS : IP67.
2.3 MATING CYCLES DURABILITY : 500 CYCLES MIN.
2.4 RoHS COMPLIANT.
 - ALL DIMENSIONS ARE FOR REFERENCE USE ONLY.

RT618DC X X
① ②

P/N	①	②	CHAIN	PLATING
RT618DC	---	---	NO CHAIN	NICKEL PLTING
RT618DCA	---	A	NO CHAIN	BLACK ANODIZING
RT618DCG	G	---	CHAIN	NICKEL PLTING
RT618DCGA	G	A	CHAIN	BLACK ANODIZING

QUANTITY	PART NUMBER	DESCRIPTION	ITEM
MATERIALS LIST			

UNLESS OTHERWISE SPECIFIED		SIGNATURES		DATE
1) All dimensions are in metric(mm).		DRAWN	Ben	Nov-21-2016
2) Tolerances are as follows: 1 PL DEC 0.30 Fractions 1/64 2 PL DEC 0.10 Fractions 1/16 3 PL DEC 0.08 Fractions 1/16		CHECKED		
3) Note reference =		ENGINEER		
MATERIAL SPECIFICATIONS:		APPROVAL		
PROCESS SPECIFICATIONS:		CUSTOMER:		

SIZE	TYPE	DWG NO:	REVISION
B	C-	RT618DCxx	A1

SCALE: NONE

SHEET 1 OF 1

Amphenol
Sine Systems - www.amphenol-sine.com
44724 Worthy Drive
Clinton Township, MI 48036

ECO-MATE,DUSTCAP FOR
PLUG,SIZE 18

Mouser Electronics

Authorized Distributor

Click to View Pricing, Inventory, Delivery & Lifecycle Information:

[Amphenol:](#)

[RT618DCG](#)