



Quality Products. Service Excellence.

Two Post Mounting Clamping Shelf *RACS Series*

200 lbs|91 kg Weight Capacity

This rackshelf has been designed to provide superior ventilation for both cable and satellite boxes as well as other components that generate considerable amounts of heat. Featuring two adjustable foam padded mounting bars for securing components without fear of scratches.



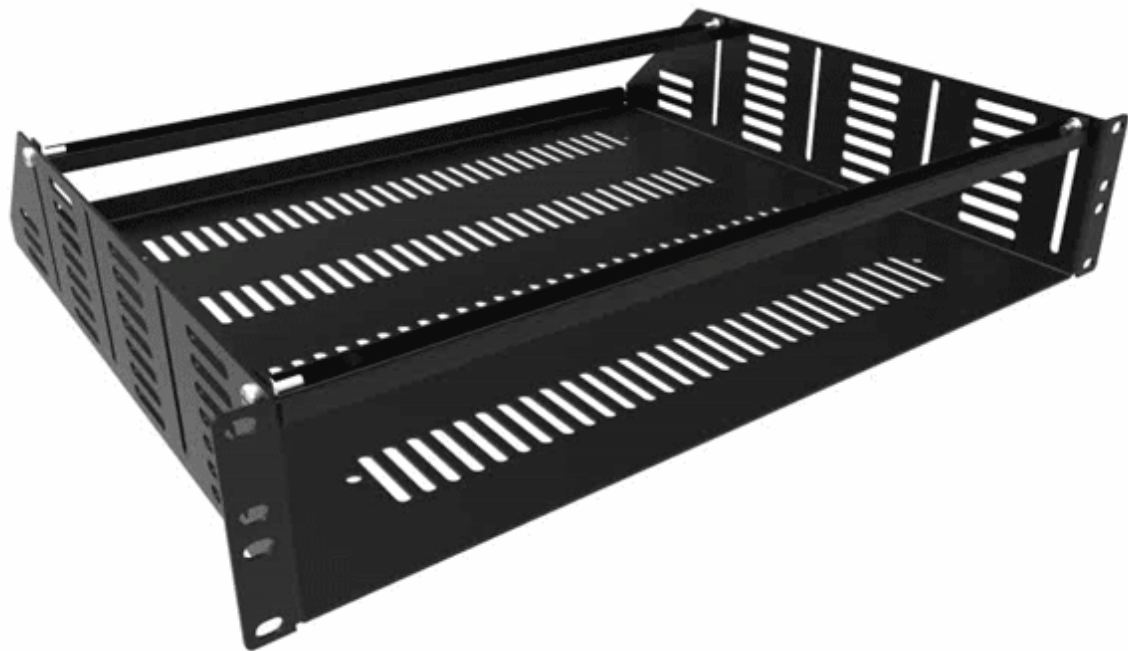
Features

- Allows easy rack mounting of narrow equipment or items that do not have rack mounting capabilities.
- Includes two adjustable - gasketed (to protect from scratching the clamped equipment) horizontal clamps.
- Designed for equipment requiring front adjustment without sliding around the shelf (ie...pushbuttons, jacks, plugs, dials etc.).
- Choice of four clamp locations depending on depth of equipment.
- Choice of three shelf heights (see table below).
- Mounted equipment height should be at least 1/2" shorter than shelf "panel height" to allow clearance for the gasketed clamps (see table below).
- Provides a sturdy shelf without obstructing upward heat movement.
- Rear lip folded up for extra strength & doubles as an equipment retainer.
- 14-gauge steel construction.
- Tested to nearly double the suggested load rating of 200 lbs (91 kg).
- Rugged textured - black powder paint finish.
- TAA Compliant
- RoHS and REACH compliant.
- Manufactured in North America.



Accessories

- Mounting Hardware
- Hook and Loop Roll



Part No.	Overall Dimensions			Rack Units	Mounting Dimensions		Max Equipment
	Height	Width	Depth		Height	Width	Height
RACSV190315BK1	3.47	19.01	15.00	2U	3.50	19.00	3.00
RACSV190515BK1	5.22	19.01	15.00	3U	5.25	19.00	4.75
RACSV190715BK1	6.47	19.01	15.00	4U	6.50	19.00	6.00

Tags: Trap Shelf

Data subject to change without notice

© 2020. Hammond Manufacturing Ltd. All rights reserved.

Mouser Electronics

Authorized Distributor

Click to View Pricing, Inventory, Delivery & Lifecycle Information:

Hammond:

[RACSV190315BK1](#) [RACSV190715BK1](#) [RACSV190515BK1](#)