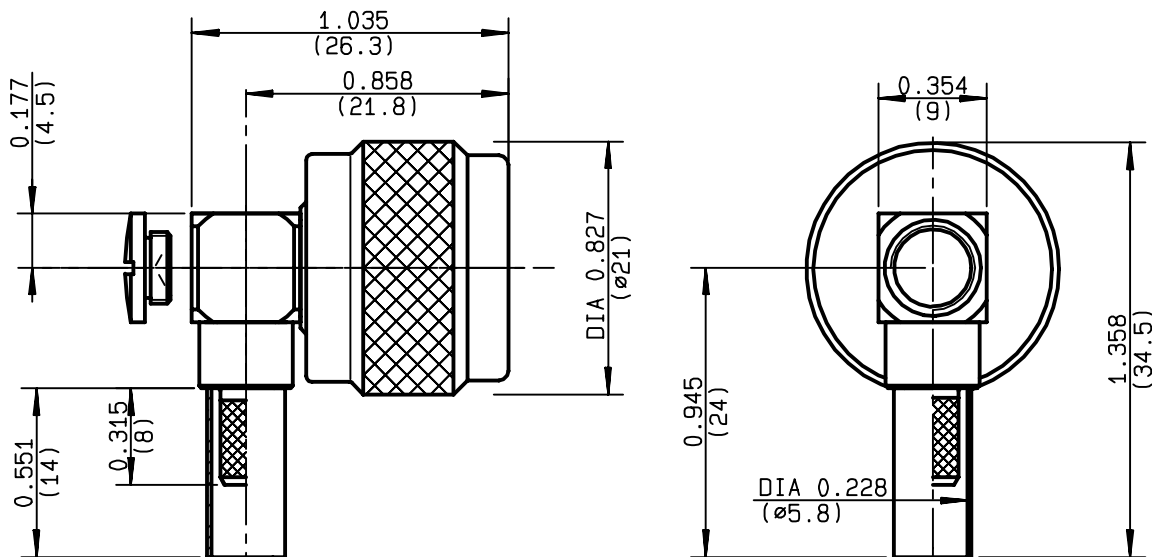


# RIGHT ANGLE PLUG CRIMP TYPE

## CABLE 5/50 D

# R161.183.000

**SERIES N**



NOMINAL IMPEDANCE	<b>50</b>	$\Omega$
FREQUENCY RANGE	<b>0-11</b>	GHz
TEMPERATURE RATING	<b>-55/+155</b>	$^{\circ}\text{C}$
V.S.W.R	<b>1.65</b> +	$\times F(\text{GHz})\text{Maxi}$
RF INSERTION LOSS	<b>0.07</b>	$\sqrt{F}(\text{GHz}) \text{ dB Maxi}$
VOLTAGE RATING	<b>850</b>	$V_{\text{eff}} \text{ Maxi}$
DIELECTRIC WITHSTANDING VOLTAGE	<b>1500</b>	$V_{\text{eff}} \text{ Mini}$
INSULATION RESISTANCE	<b>5000</b>	$M\Omega \text{ Mini}$
HERMETIC SEAL	<b>NA</b>	$\text{Atm.cm}^3/\text{s}$
LEAKAGE (pressurized only)	<b>NA</b>	
MECHANICAL DURABILITY	<b>500</b>	Cycles
WEIGHT	<b>30</b>	gr
SPECIFICATION		

CABLES : **KX 23**  
**RG 142**  
**RG 142 FTX**  
**RG 223**  
**RG 400**

## OTHERS CHARACTERISTICS

CABLE RETENTION	<b>200</b>	N Mini
CENTER CONTACT RETENTION		
Axial force - mating end	<b>27</b>	N Mini
Axial force - opposite end	<b>27</b>	N Mini
Torque	<b>NA</b>	cm.N Mini
RECOMMENDED TORQUES		
Mating	<b>130</b>	cm.N
Panel nut	<b>NA</b>	cm.N
Clamp nut	<b>NA</b>	cm.N

## CONNECTOR PARTS MATERIALS

BODY	BRASS
OUTER CONTACT	BRASS
CENTER CONTACT	BRASS
INSULATOR	PTFE
GASKET	SILICONE RUBBER
OTHERS PIECES	BRASS

## FINISH

(all values are given )  
in micrometers

BBR 2
BBR 2
GOLD 0.5 OVER NICKEL 2
-
-
BBR 2

BONOMINI

ISSUE  
**9920C02**

CREATION DATE  
**30/06/1993**

FILE PART-NUMBER  
**EPC 96-07**



**RADIALL**<sup>®</sup>

The information given here is subject to change without notice.  
 Design changes may be in order to improve the product .

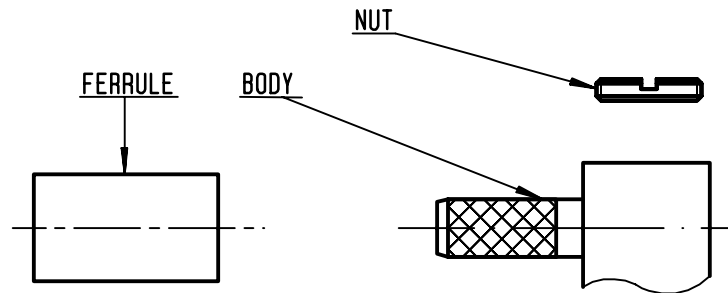
*Connect to the future*



**R161.183.000**

ISSUE 9920C02 SERIES

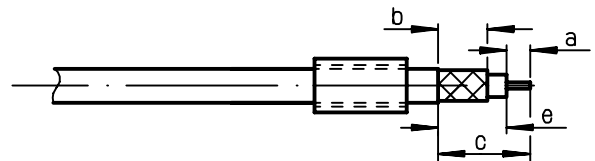
N



①

Slide onto the cable the ferrule .  
Strip the cable .

-  
-

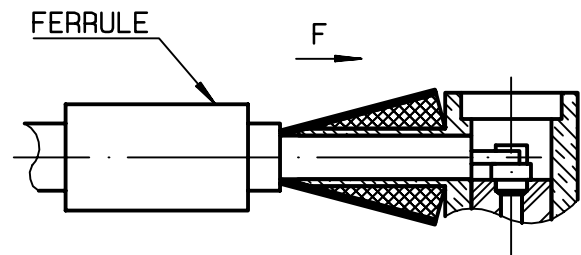


Stripping	a	b	c	d	e
inch	0.138	0.276	0.709	0	0.571
mm	3.5	7	18		14.5

②

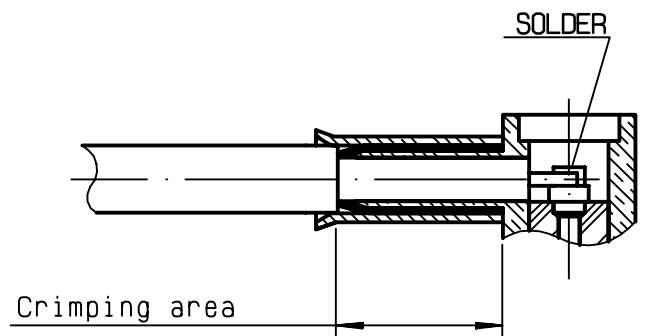
Fan the braid .  
Push connector body under the braid .  
Slide the ferrule on the braid  
( in direction F )

-  
-  
-  
-  
-



③

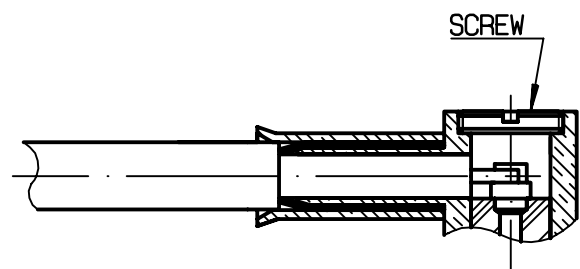
Crimp the ferrule with crimping tool  
R282 223 000 ( Hex. : .213 ) or  
crimping tool R 282 293 000 ( M22520/5-01 )  
+ dies R 282 235 011 ( M22520/5-11 )  
Solder inner conductor .



④

Screw the clamp nut into the body.

-  
-



# Mouser Electronics

Authorized Distributor

Click to View Pricing, Inventory, Delivery & Lifecycle Information:

Radial:

R161183000