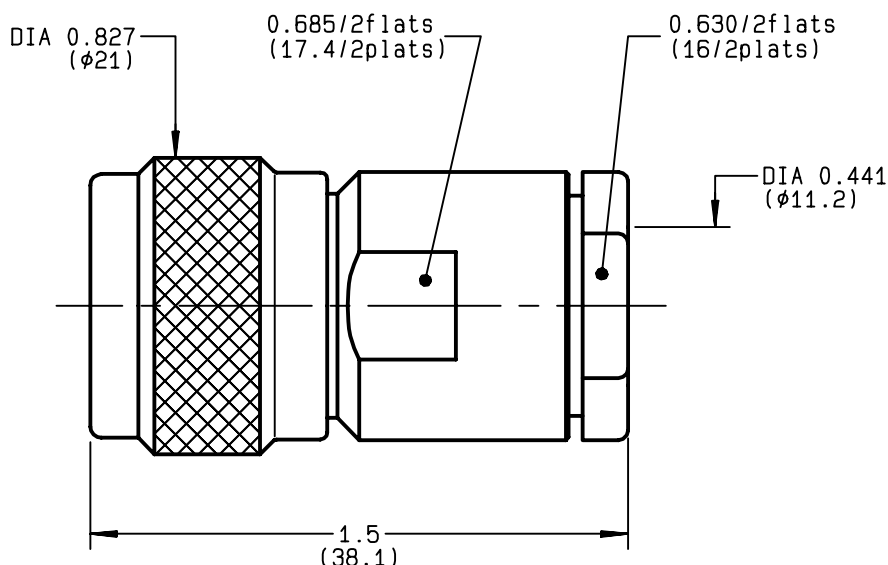


**STRAIGHT PLUG CLAMP TYPE**  
**CABLE 10+11/50+75 S+D**
**R161.020.000**  
**SERIES N**


NOMINAL IMPEDANCE	<b>50</b>	$\Omega$
FREQUENCY RANGE	<b>0-11</b>	GHz
TEMPERATURE RATING	<b>-55/+155</b>	°C
V.S.W.R	<b>1.30*</b>	+ x F(GHz)Maxi
RF INSERTION LOSS	<b>0.048</b>	$\sqrt{F}$ (GHz) dB Maxi
VOLTAGE RATING	<b>1400</b>	Veff Maxi
DIELECTRIC WITHSTANDING VOLTAGE	<b>2500</b>	Veff Mini
INSULATION RESISTANCE	<b>5000</b>	M $\Omega$ Mini
HERMETIC SEAL	<b>NA</b>	Atm.cm <sup>3</sup> /s
LEAKAGE (pressurized only)	<b>NA</b>	
MECHANICAL DURABILITY	<b>500</b>	Cycles
WEIGHT	<b>49.7</b>	gr
SPECIFICATION		

CABLES : **KX 4**  
**KX 8**  
**RG 11**  
**RG 144**  
**RG 165**  
**RG 213**  
**RG 214**  
**RG 216**  
**RG 225**  
**RG 393**

## OTHERS CHARACTERISTICS

**\* ROS = 1.7 pour un cable de 75 ohms**

CABLE RETENTION	<b>300</b>	N Mini
CENTER CONTACT RETENTION		
Axial force - mating end	<b>NA</b>	N Mini
Axial force - opposite end	<b>NA</b>	N Mini
Torque	<b>NA</b>	cm.N Mini
RECOMMENDED TORQUES		
Mating	<b>130</b>	cm.N
Panel nut	<b>NA</b>	cm.N
Clamp nut	<b>800</b>	cm.N

CONNECTOR PARTS	MATERIALS	FINISH	(all values are given ) in micrometers
BODY	BRASS	BBR 2	
OUTER CONTACT	BRASS	BBR 2	
CENTER CONTACT	BRASS	GOLD 0.5 OVER NICKEL 2	
INSULATOR	PTFE	-	
GASKET	SILICONE RUBBER	-	
OTHERS PIECES	BRASS	BBR 2	

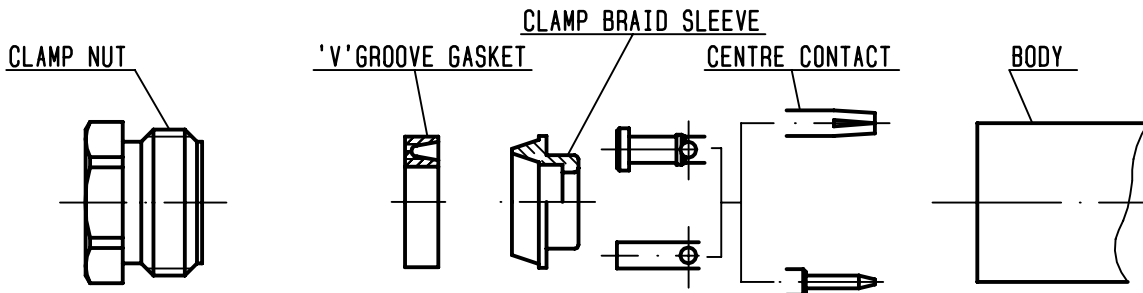
BONOMINI

ISSUE	CREATION DATE	FILE PART-NUMBER
<b>0243B00</b>	<b>03/11/1992</b>	<b>EPC 96-07</b>

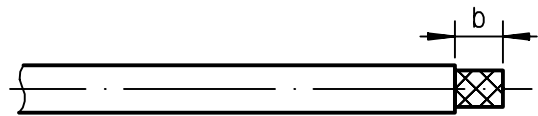

**RADIALL®**

The information given here is subject to change without notice.  
 Design changes may be in order to improve the product .

*Connect to the future*

**R161.020.000**ISSUE **0243B00** SERIES**N****①**

Strip the cable .

-  
-  
-  
-

Stripping	a	b	c	d	e
inch	0.197	0.335	0	0	0.059
mm	5	8.5			1.5

**②**

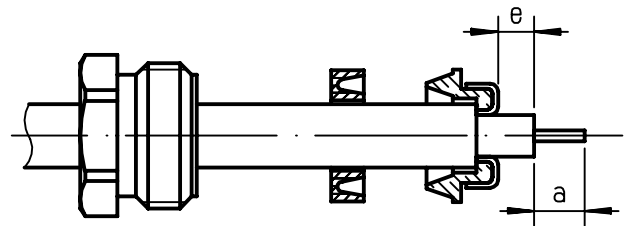
Slide the clamp nut and the 'V' groove gasket onto the cable .

Slide clamp braid sleeve over braid .

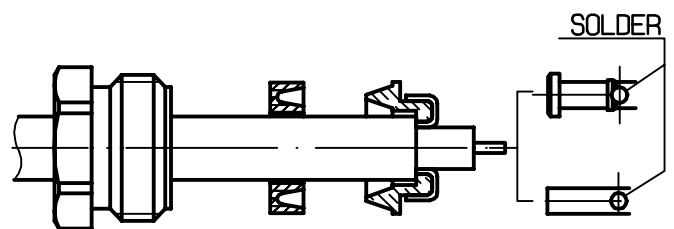
Fold back braid and trim off surplus braid .

Trim back dielectric as shown .

-

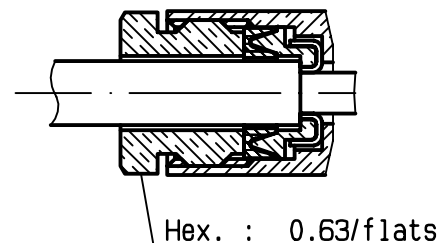
**③**

Solder the cable inner conductor into centre contact .

-  
-  
-  
-  
-  
-**④**

Screw sub-assembly into the connector body .

( recommended coupling torque 70.87 in.lb )

-  
-

# Mouser Electronics

Authorized Distributor

Click to View Pricing, Inventory, Delivery & Lifecycle Information:

Radial:

[R161020000](#) [R161020000W](#)