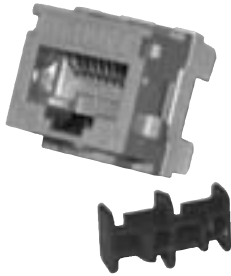


## Workstation Outlets

### GigaFlex PS6+ Modules Category 6

AX101067 GigaFlex PS6+Module



#### GigaFlex PS6+ Module

The **GigaFlex PS6+ Module** is a punch down UTP connector based on a patented Encapsulated Lead Frame technology ensuring excellent long-term reliability as well as extremely stable transmission performance. The unmatched Beyond Cat6 performance exceeds all parameters specified in the Category 6 standard. All performance characteristics have been set to guarantee transmission performance up to 300 MHz and a data-rate of up to 4.8 Gb/s.

The GigaFlex PS6+ is the module of choice for terminating UTP cables into the MediaFlex and Interface Outlet Series. It can also be mixed and matched with a wide variety of MDVO adapters, boxes and patch panels to suit practically any installation configuration for workstation outlet, consolidation point and telecommunications room applications.

A keystone-style is also available for terminating UTP cables into keystone-style mounting hardware. It can be easily snapped into simple sheet metal cut-outs (panel mounting) for installation into consolidation point or multi-user custom-built devices.

Also available is the GigaFlex PS6+ Module, Clipsal-style which is fully compatible with Clipsal faceplates and mounting hardware.

Description	Belden Part Number		
	MDVO-Style	Keystone-Style	Clipsal-Style

#### Workstation Outlets

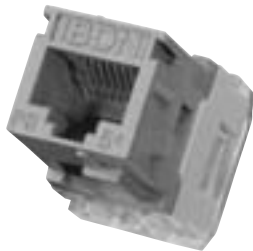
GigaFlex PS6+ Module			
T568A/B, Gray	<b>AX101063</b>	<b>AX101318</b>	<b>AX101340</b>
T568A/B, Almond	<b>AX101064</b>	<b>AX101319</b>	<b>AX101341</b>
T568A/B, White	<b>AX101065</b>	<b>AX101320</b>	<b>AX101342</b>
T568A/B, Black	<b>AX101066</b>	<b>AX101321</b>	<b>AX101343</b>
T568A/B, Orange	<b>AX101067</b>	<b>AX101322</b>	<b>AX101344</b>
T568A/B, Red	<b>AX101068</b>	<b>AX101323</b>	<b>AX101345</b>
T568A/B, Yellow	<b>AX101069</b>	<b>AX101324</b>	<b>AX101346</b>
T568A/B, Green	<b>AX101070</b>	<b>AX101325</b>	<b>AX101347</b>
T568A/B, Blue	<b>AX101071</b>	<b>AX101326</b>	<b>AX101348</b>
T568A/B, Purple	<b>AX101072</b>	<b>AX101327</b>	<b>AX101349</b>
T568A/B, Brown	<b>AX101073</b>	<b>AX101328</b>	<b>AX101350</b>
T568A/B, Ivory	<b>AX102563</b>		

These products are in the process of being assessed for RoHS compliance. Please check our Web Site for the most current RoHS status.

## Workstation Outlets

### GigaFlex PS5E Modules Category 5E and Flex Modules, USOC-coded

AX101051 GigaFlex PS5E Module



AX101037 Flex Module, USOC-coded



#### GigaFlex PS5E Module

The **GigaFlex PS5E Module** is a punch down UTP connector based on a patented Encapsulated Lead Frame technology ensuring excellent long term reliability as well as extremely stable transmission performance. The PS5E-rated performance exceeds all requirements specified in the Category 5e standard. All performance parameters including NEXT, FEXT, Attenuation and Return Loss have been set to guarantee transmission performance up to 160 MHz and a data-rate of up to 1.2 Gb/s.

The GigaFlex PS5E is the module of choice for terminating UTP cables into the MediaFlex and Interface Outlet Series. It can also be mixed and matched with a wide variety of MDVO adapters, boxes and patch panels to suit practically any installation configuration for workstation outlet, consolidation point and telecommunications room applications.

A keystone-style is also available for terminating UTP cables into keystone-style mounting hardware. It can be easily snapped into simple sheet metal cut-outs (panel mounting) for installation into consolidation point or multi-user custom-built devices.

#### Flex Module, USOC-coded

The **Flex Module USOC-coded** is a punch down UTP connector that has a narrower plug entrance and a USOC 6-pin color code in the back. These modules are used for voice applications and are designed to prevent connecting the computer into the analog phone jack, which may cause damages to the electronics.

The Flex Module is the module of choice for voice applications in the MediaFlex and Interface Outlet Series. It can also be mixed and matched with a wide variety of MDVO adapters, boxes and patch panels to suit practically any installation configuration for workstation outlet, consolidation point and telecommunications rooms applications.

Description	Belden Part Number	
	MDVO-Style	Keystone-Style

#### Workstation Outlets

GigaFlex PS5E Module		
T568A/B, Gray	AX101044	AX101307
T568A/B, Almond	AX101045	AX101308
T568A/B, White	AX101046	AX101309
T568A/B, Black	AX101047	AX101310
T568A/B, Orange	AX101048	AX101311
T568A/B, Red	AX101049	AX101312
T568A/B, Yellow	AX101050	AX101313
T568A/B, Green	AX101051	AX101314
T568A/B, Blue	AX101052	AX101315
T568A/B, Purple	AX101053	AX101316
T568A/B, Brown	AX101054	AX101317
T568A/B, Ivory	AX102564	
Flex Module, USOC-coded, 6-position		
Gray	AX101033	
Almond	AX101034	
White	AX101035	
Black	AX101036	
Orange	AX101037	
Red	AX101038	
Yellow	AX101039	
Green	AX101040	
Blue	AX101041	
Purple	AX101042	
Brown	AX101043	
Ivory	AX102565	

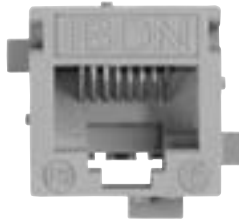
These products are in the process of being assessed for RoHS compliance. Please check our Web Site for the most current RoHS status.



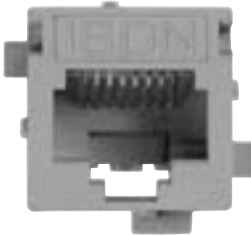
## Workstation Outlets

### EZ-MDVO PS5E Modules Category 5E and EZ-MDVO Modules, USOC-coded

AX100654 EZ-MDVO PS5E Module



AX100177 EZ-MDVO Module, USOC-coded



#### EZ-MDVO PS5E Module

The **EZ-MDVO Module** is built with a patented lead frame design and encapsulated insulation displacement contacts, ensuring reliable connections and performance well above Category 5E standards. The EZ-MDVO module termination cap is what is so unique about this product. It allows for a simple and fast “press-fit” installation while ensuring consistent wire termination every time it is snap-locked. The module termination cap is color-coded to facilitate wire arrangement and speed up installation time. The termination cap is printed with the T568A/B color-codes. The EZ-MDVO Modules can be mixed and matched with a wide variety of MediaFlex, Interface and MDVO-style faceplates, adapters and boxes to suit practically any installation configuration for workstation outlet installations.

A keystone-style is also available for terminating UTP cables into keystone-style mounting hardware. It can be easily snapped into simple sheet metal cut-outs (panel mounting) for installation into consolidation point or multi-user custom-built devices. Clipsal-style EZ-MDVO Modules are available for installations using commercially available Clipsal faceplates and HPM-style EZ-MDVO Modules are available for installations using commercially available HPM faceplates.

#### EZ-MDVO Module, USOC-coded

The **EZ-MDVO Module USOC-coded** has a narrower plug entrance and is designed to be used for voice applications. These modules prevent connecting the computer into the analog phone jack, which may cause damages to the electronics. Also available is the EZ-MDVO Module, USOC-coded keystone style.

Description	Belden Part Number			
	MDVO-Style	Keystone-Style	Clipsal-Style	HPM-Style

#### Workstation Outlets

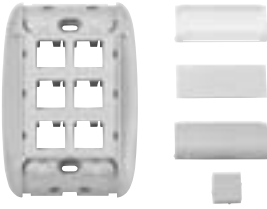
EZ-MDVO PS5E Module				
T568A/B coded, Gray	AX100645	AX100577	AX100678	AX100667
T568A/B coded, Almond	AX100646	AX100578	AX100679	AX100668
T568A/B coded, White	AX100647	AX100579	AX100680	AX100669
T568A/B coded, Black	AX100648	AX100580	AX100681	AX100670
T568A/B coded, Orange	AX100649	AX100581	AX100682	AX100671
T568A/B coded, Red	AX100650	AX100582	AX100683	AX100672
T568A/B coded, Yellow	AX100651	AX100583	AX100684	AX100673
T568A/B coded, Green	AX100652	AX100584	AX100685	AX100674
T568A/B coded, Blue	AX100653	AX100585	AX100686	AX100675
T568A/B coded, Purple	AX100654	AX100586	AX100687	AX100676
T568A/B coded, Brown	AX100655	AX100587	AX100688	AX100677
EZ-MDVO Module, USOC-coded, 6 position				
Gray	AX100171	AX100588		
Almond	AX100172	AX100589		
White	AX100173	AX100590		
Black	AX100174	AX100591		
Orange	AX100175	AX100592		
Red	AX100176	AX100593		
Yellow	AX100177	AX100594		
Green	AX100178	AX100595		
Blue	AX100179	AX100596		
Purple	AX100180	AX100597		
Brown	AX100181	AX100598		

These products are in the process of being assessed for RoHS compliance. Please check our Web Site for the most current RoHS status.

# Workstation Outlets

## MediaFlex Faceplate Kits and MediaFlex Plates

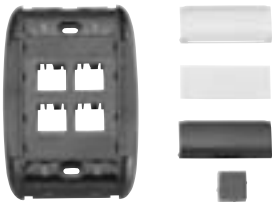
AX101786 MediaFlex Faceplate Kit, 6-port



AX101779 MediaFlex Faceplate Kit, 2-port



AX101785 MediaFlex Faceplate Kit, 4-port



AX101748 MediaFlex Plate, Single Gang



AX101869 MediaFlex Plate, Double Gang



### MediaFlex Faceplate Kit

MediaFlex Plates and Inserts snap together to create a full line of modular workstation outlets. This product line, called the MediaFlex Modular Outlet Series, has been designed with the help of industrial designers as well as other professionals in the industry in order to combine flexibility, ease of use and high-tech aesthetics for work area installations.

Even though the MediaFlex series is a modular outlet system, ease and flexibility in ordering and inventory management are also considered with the offering of pre-configured faceplate kits (includes plate, flush MDVO-style inserts, filler inserts, MDVO blank, labeling window covers, labeling paper and all necessary mounting screws).

### MediaFlex Plate

**MediaFlex Plates** are one part of the comprehensive line of plates and inserts that snap together to create a full line of modular workstation outlets.

MediaFlex Plates can be mounted over standard NEMA type outlet boxes and rings to provide support for a variety of MediaFlex Adapters and Inserts. The fully modular construction combined with the front access design provides extensive configuration flexibility for current and future network needs. MediaFlex Plates are available in Single gang and Double gang configurations.

The Double gang faceplate comes with a stand-off ring included in the package. This ring allows for easy mounting with virtually any industry electrical box or mud/adaptor rings, therefore providing added installation flexibility.

Each plate has the capacity of up to 6 ports per Single gang and 12 ports per Double gang.

Description	Belden Part Number		
	2-Port Flush	4-Port Flush	6-Port Flush

### Workstation Outlets

MediaFlex Faceplate Kit			
Gray	AX101778	AX101782	AX101786
Almond	AX101779	AX101783	AX101787
Elec. White	AX101780	AX101784	AX101788
Black	AX101781	AX101785	AX101789
White	AX102621	AX102622	AX102623
Ivory	AX102566	AX102567	AX102568

Description	Belden Part Number	
	Single Gang	Double Gang

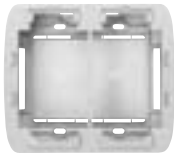
MediaFlex Plate		
Gray	AX101745	AX101869
Almond	AX101746	AX101870
Elec. White	AX101747	AX101871
Black	AX101748	AX101872
White	AX102608	AX102609
Ivory	AX102569	AX102570

These products are in the process of being assessed for RoHS compliance. Please check our Web Site for the most current RoHS status.

# Workstation Outlets

## MediaFlex Adapter Boxes and MediaFlex Inserts

AX101874 MediaFlex Adapter Box, Double Gang



### MediaFlex Surface Adapter Box

**MediaFlex Surface Adapter Boxes** are one part of the comprehensive line of plates and inserts that snap together to create a full line of modular workstation outlets.

MediaFlex Surface Adapter Boxes can be mounted over standard NEMA type outlet boxes and rings to provide support for the MediaFlex plates. The MediaFlex Surface Adapter Boxes are available as a Double gang configuration. The Double gang box allows more room for cable management and bend radius control.

Description	Belden Part Number					
	Gray	Almond	Elec. White	Black	White	Ivory

### Workstation Outlets

MediaFlex Adapter Box						
Single Gang	AX102480	AX102481	AX102482	AX102483	AX102484	AX102485
Double Gang	AX101873	AX101874	AX101875	AX101876	AX102610	AX102571

AX101756 MediaFlex MDVO (style) Insert, 2-port, Angled



AX101752 MediaFlex MDVO (style) Insert, 2-port, Flush



AX101760 MediaFlex Filler Insert, 1-unit



AX101764 MediaFlex Filler Insert, 2-unit



AX101768 PS6+ MediaFlex GigaFlex Insert, 2-port



### MediaFlex Insert

**MediaFlex Inserts** provide optimum flexibility in configuring multimedia workstation outlets that respond to any present or future network needs. MediaFlex MDVO-style Inserts along with MediaFlex Filler Inserts and MediaFlex GigaFlex Inserts allow for the easy configuration of outlets. All inserts are front loaded and easily snapped in and out of the MediaFlex Plates for simple installation and maintenance.

**MediaFlex MDVO-style Inserts** are available in a 2-port configuration in both Flush and Angled versions. They are compatible with all GigaFlex and MDVO Modules (EZ-MDVO and Multimedia). The inserts are two units high for the flush version and three units high for the angled version. Therefore three flush inserts or two angled inserts are required to fully populate a Single gang MediaFlex Plate.

**MediaFlex GigaFlex Inserts** are available in a 2-port configuration in both PS5E (Category 5E) and PS6+ (Beyond Category 6) performance levels. The inserts are two units high, therefore three inserts can be used to fully populate a Single gang MediaFlex Plate making up a 6-port outlet.

**MediaFlex Filler Inserts** are used to fill the unused spaces in low density workstation outlets. They are available in one unit and two unit sizes.

Description	Belden Part Number	
	Flush	Angled

### Workstation Outlets

MediaFlex MDVO (style) Insert		
2-port, Gray, bag of 10 units	AX101749	AX101753
2-port, Almond, bag of 10 units	AX101750	AX101754
2-port, Elec. White, bag of 10 units	AX101751	AX101755
2-port, Black, bag of 10 units	AX101752	AX101756
2-port, White, bag of 10 units	AX102612	AX102613
2-port, Ivory, bag of 10 units	AX102572	AX102573

Description	Belden Part Number	
	PS6+	PS5E

MediaFlex GigaFlex Insert		
2-port, Gray	AX101765	AX101769
2-port, Almond	AX101766	AX101770
2-port, Elec. White	AX101767	AX101771
2-port, Black	AX101768	AX101772
2-port, Ivory	AX102574	AX102575

Description	Belden Part Number	
	1-Unit	2-Unit

MediaFlex Filler Insert		
Gray, bag of 10 units	AX101757	AX101761
Almond, bag of 10 units	AX101758	AX101762
Elec. White, bag of 10 units	AX101759	AX101763
Black, bag of 10 units	AX101760	AX101764
White, bag of 10 units	AX102614	AX102615
Ivory, bag of 10 units	AX102576	AX102577

These products are in the process of being assessed for RoHS compliance. Please check our Web Site for the most current RoHS status.

# Workstation Outlets

## MediaFlex Inserts (continued) and Accessories

AX101878 MediaFlex RCA Insert, 3-port, Angled



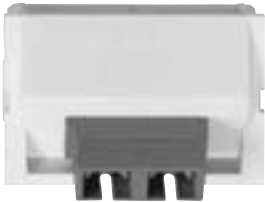
AX101882 MediaFlex SVHS Insert, 1-port, Angled



AX101886 MediaFlex SVGA Insert, 1-port, Angled



AX101937 MediaFlex SC Duplex Insert, Angled



AX101777 Labeling Window Cover



AX101790 Dust Cover



### MediaFlex Multimedia Insert

**MediaFlex Multimedia Inserts** provide optimum flexibility in configuring multimedia workstation outlets that respond to any present or future network needs. MediaFlex Multimedia Inserts along with other MediaFlex Inserts allow for easy configuration of outlets. All inserts are front loaded and easily snapped in and out of the MediaFlex Plates for easy installation and maintenance.

MediaFlex Multimedia inserts include the following products:

- 3-Port RCA insert with IDC termination
- SVHS insert with IDC termination, and feedthrough
- SVGA (DB15) insert with IDC termination
- SC Duplex inserts in MM and SM

MediaFlex Multimedia Inserts are available in Angled versions only in order to allow for proper management of cable bend radius. The inserts are three units high, therefore two inserts are required to fully populate a Single gang faceplate and four inserts will fully populate a Double gang faceplate.

### Labeling Window Cover/Dust Cover

**MediaFlex Accessories** include Labeling Window Covers used with the MediaFlex faceplates and Dust Covers used with the MediaFlex GigaFlex Inserts. Dust Covers can also be used with standard GigaFlex and EZ-MDVO UTP Modules.

Description	Belden Part Number
<b>MediaFlex Multimedia Insert</b>	
3-port RCA, Gray	AX101877
3-port RCA, Almond	AX101878
3-port RCA, Elec. White	AX101879
3-port RCA, Black	AX101880
3-port RCA, White	AX102616
3-port RCA, Ivory	AX102578
1-port SVHS, Gray	AX101881
1-port SVHS, Almond	AX101882
1-port SVHS, Elec. White	AX101883
1-port SVHS, Black	AX101884
1-port SVHS, White	AX102617
1-port SVHS, Ivory	AX102579
1-port SVGA, Gray	AX101885
1-port SVGA, Almond	AX101886
1-port SVGA, Elec. White	AX101887
1-port SVGA, Black	AX101888
1-port SVGA, White	AX102618
1-port SVGA, Ivory	AX102580
SVGA Feedthrough, Gray	AX102334
SVGA Feedthrough, Almond	AX102335
SVGA Feedthrough, Elec. White	AX102336
SVGA Feedthrough, Black	AX102337
SVGA Feedthrough, White	AX102630
SVGA Feedthrough, Ivory	AX102581
SC Duplex Single-mode, Gray	AX101935
SC Duplex Single-mode, Almond	AX101936
SC Duplex Single-mode, Elec. White	AX101937
SC Duplex Single-mode, Black	AX101938
SC Duplex Single-mode, White	AX102619
SC Duplex Single-mode, Ivory	AX102649
SC Duplex Multimode, Gray	AX101939
SC Duplex Multimode, Almond	AX101940
SC Duplex Multimode, Elec. White	AX101941
SC Duplex Multimode, Black	AX101942
SC Duplex Multimode, White	AX102620
SC Duplex Multimode, Ivory	AX102650
<b>MediaFlex Accessories</b>	
Window Cover, Clear, bag of 25 units	AX101773
Window Cover, Gray, bag of 25 units	AX101774
Window Cover, Almond, bag of 25 units	AX101775
Window Cover, Elec. White, bag of 25 units	AX101776
Window Cover, Black, bag of 25 units	AX101777
Dust Cover, Clear, bag of 50 units	AX101790

These products are in the process of being assessed for RoHS compliance. Please check our Web Site for the most current RoHS status.

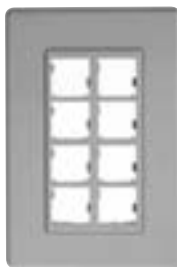
# Workstation Outlets

## MDVO Faceplates Flush and Angled

A0405257 MDVO Faceplate, 1-port



A0405294 MDVO Faceplate, 8-port



A0620807 MDVO Faceplate, 12-port



A0645267 MDVO Angled Entry Faceplate, shown here with modules



### MDVO Faceplate, Flush

**MDVO Faceplates** flush combine ease of use and aesthetics in work area installations. The Single gang faceplates are available in 1-port and 8-port configurations, Double gang faceplates are configured for 12-ports. The Single gang faceplates can fit over the Interface Surface Adapter Boxes for surface mount installations.

MDVO faceplates are suitable for use with EZ-MDVO and MDVO Multimedia Modules.

### MDVO Angled Entry Faceplate

The **MDVO Angled Entry Faceplate** offers better patch cord protection than traditional faceplates and optimizes patch cord bend radius control. The MDVO Angled Entry Faceplate can accept up to four EZ-MDVO or MDVO Multimedia Modules. The faceplate can be attached to standard electrical boxes or wall-mounting hardware for flush-mount installations. The faceplate can also fit over the Interface Surface Adapter Box for surface mount installations.

Description	Belden Part Number
-------------	--------------------

#### Workstation Outlets

MDVO Faceplate	
Flush, 1-port, Single Gang, Gray	A0405255
Flush, 1-port, Single Gang, Almond	A0405256
Flush, 1-port, Single Gang, White	A0405257
Flush, 1-port, Single Gang, Black	A0405258
Flush, 1-port, Single Gang, Ivory	AX102585
Flush, 8-port, Single Gang, Gray	A0405294
Flush, 8-port, Single Gang, Almond	A0405295
Flush, 8-port, Single Gang, White	A0405296
Flush, 8-port, Single Gang, Black	A0405298
Flush, 8-port, Single Gang, Ivory	AX102586
Flush, 12-port, Double Gang, Gray	A0620806
Flush, 12-port, Double Gang, Almond	A0620807
Flush, 12-port, Double Gang, White	A0620808
Flush, 12-port, Double Gang, Black	A0620809
Flush, 12-port, Double Gang, Ivory	AX102587
MDVO Angled Entry Faceplate	
4-port, Gray	A0645267
4-port, Almond	A0645268
4-port, White	A0645269
4-port, Black	A0645270
4-port, Ivory	AX102588

These products are in the process of being assessed for RoHS compliance. Please check our Web Site for the most current RoHS status.

## Workstation Outlets

### Interface Plate and Surface Adapter Boxes

AX101431 Interface Plate, 2-port, shown here with modules



AX101438 Interface Plate, 4-port, shown here with modules



AX101441 Interface Plate, 6-port, shown here with modules



AX101474 Interface/MDVO Surface Adapter Box



#### Interface Plate, Flush

**Interface Plates** combine flexibility and ease of use in work area installations. They are designed to accept the EZ-MDVO and GigaFlex UTP modules as well as all the MDVO Multimedia Modules. The Interface Plates are available in Single gang and can accept up to 6 modules. They also have labeling capabilities using built-in labeling windows. The faceplates can be attached to standard electrical boxes or wall-mounting hardware for flush-mount installations. The faceplates can also fit over the Interface Adapter Boxes for surface mount installations.

#### Interface/MDVO Surface Adapter Box

The **Interface/MDVO Surface Adapter Box** allows surface mounting of Interface Plates as well as MDVO Flush and Angled entry faceplates. The box can be mounted on any flat surface or can be attached to standard electrical boxes or wall-mounting hardware for additional storage space.

Description	Belden Part Number
<b>Workstation Outlets</b>	
<b>Interface Plate</b>	
Flush, 2-port, Gray	AX101431
Flush, 2-port, Almond	AX101432
Flush, 2-port, White	AX101433
Flush, 2-port, Black	AX101434
Flush, 2-port, Ivory	AX102582
Flush, 4-port, Gray	AX101435
Flush, 4-port, Almond	AX101436
Flush, 4-port, White	AX101437
Flush, 4-port, Black	AX101438
Flush, 4-port, Ivory	AX102583
Flush, 6-port, Gray	AX101439
Flush, 6-port, Almond	AX101440
Flush, 6-port, White	AX101441
Flush, 6-port, Black	AX101442
Flush, 6-port, Ivory	AX102584
<b>Interface/MDVO Surface Adapter Box</b>	
Single Gang, Gray	AX101474
Single Gang, Almond	AX101475
Single Gang, White	AX101476
Single Gang, Black	AX101477
Single Gang, Ivory	AX102589

These products are in the process of being assessed for RoHS compliance. Please check our Web Site for the most current RoHS status.



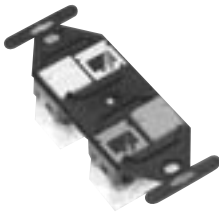
# Workstation Outlets

## MDVO Adapters

A0645271 MDVO Side Entry Box, shown here with modules



AX100311 MDVO 106 Adapter, 4-port, shown here with modules



A0409654 MDVO Deco Adapter, shown here with modules



AX100925 MDVO Modular Furniture Adapter, 4-port, shown here with modules



### MDVO Adapters

All MDVO Adapters are compatible with GigaFlex, EZ-MDVO and MDVO Multimedia Modules.

**The MDVO Side Entry Box** can be easily mounted directly on the wall, as well as on modular furniture panels, baseboards and utility poles. The compact size of the box allows secure installation in confined areas such as behind a desk or underneath a workstation.

**The MDVO 106 Adapters** are designed for installations using standard NEMA electrical-style faceplates also referred to as 106-type or duplex wall plates.

**The MDVO Deco Adapter** is designed for installations using Decora style wall plates.

**MDVO Modular Furniture Adapters** are the ideal outlet adapters for open office furniture applications. They can be snapped into any standard opening, in modular furniture settings.

Description	Belden Part Number
-------------	--------------------

### Workstation Outlets

MDVO Adapters	
MDVO Side Entry Box, 2-port, Gray	A0645271
MDVO Side Entry Box, 2-port, Almond	A0645272
MDVO Side Entry Box, 2-port, White	A0645273
MDVO Side Entry Box, 2-port, Black	A0645274
MDVO Side Entry Box, 2-port, Ivory	AX102590
MDVO 106 Adapter, 2-port, Gray	AX100304
MDVO 106 Adapter, 2-port, Almond	AX100305
MDVO 106 Adapter, 2-port, White	AX100306
MDVO 106 Adapter, 2-port, Black	AX100307
MDVO 106 Adapter, 2-port, Ivory	AX102591
MDVO 106 Adapter, 4-port, Gray	AX100308
MDVO 106 Adapter, 4-port, Almond	AX100309
MDVO 106 Adapter, 4-port, White	AX100310
MDVO 106 Adapter, 4-port, Black	AX100311
MDVO 106 Adapter, 4-port, Ivory	AX102592
MDVO Deco Adapter, 3-port, Gray	A0409651
MDVO Deco Adapter, 3-port, Almond	A0409652
MDVO Deco Adapter, 3-port, White	A0409653
MDVO Deco Adapter, 3-port, Black	A0409654
MDVO Deco Adapter, 3-port, Ivory	AX102593
MDVO Modular Furniture Adapter, 3-port, Gray	A0407071
MDVO Modular Furniture Adapter, 3-port, Almond	A0407072
MDVO Modular Furniture Adapter, 3-port, White	A0407073
MDVO Modular Furniture Adapter, 3-port, Black	A0407074
MDVO Modular Furniture Adapter, 3-port, Ivory	AX102648
MDVO Modular Furniture Adapter, 4-port, Gray	AX100925
MDVO Modular Furniture Adapter, 4-port, Almond	AX100926
MDVO Modular Furniture Adapter, 4-port, White	AX100927
MDVO Modular Furniture Adapter, 4-port, Black	AX100928
MDVO Modular Furniture Adapter, 4-port, Ivory	AX102594

These products are in the process of being assessed for RoHS compliance. Please check our Web Site for the most current RoHS status.

# Workstation Outlets

## Stainless Steel Faceplate

AX102007 2-port Stainless Steel SG Faceplate  
Keystone-style, shown here with modules



AX102012 6-port Stainless Steel DG Faceplate  
Keystone-style, shown here with modules



### Stainless Steel Faceplate

Belden's **Stainless Steel Faceplates** are ideal for labs, sanitary, medical, and harsh environment type applications.

They are designed to accept Keystone-style modules. The Stainless Steel Faceplates are available as Single Gang and Double Gang, and can accept up to 12 modules. A studded version designed to support a wall phone is also offered. Stainless Steel Faceplates can be attached to standard NEMA type outlet boxes or wall-mounting hardware for flush-mount installation. Stainless Steel Faceplates are cULus Listed.

**Please note :** For use only with Keystone-style modules such as GigaFlex PS6+, GigaFlex PS5E and EZ-MDVO Modules.

Description	Belden Part Number
-------------	--------------------

### Workstation Outlets

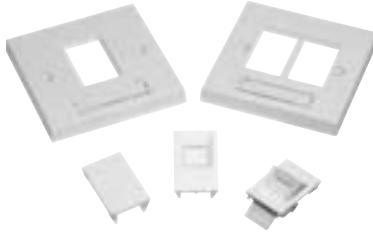
Stainless Steel Faceplate	
1-Port Stainless Steel SG Faceplate - Keystone-style studded for Phone	<b>AX102005</b>
1-Port Stainless Steel SG Faceplate - Keystone-style	<b>AX102006</b>
2-Port Stainless Steel SG Faceplate - Keystone-style	<b>AX102007</b>
3-Port Stainless Steel SG Faceplate - Keystone-style	<b>AX102008</b>
4-Port Stainless Steel SG Faceplate - Keystone-style	<b>AX102009</b>
6-Port Stainless Steel SG Faceplate - Keystone-style	<b>AX102010</b>
4-Port Stainless Steel DG Faceplate - Keystone-style	<b>AX102011</b>
6-Port Stainless Steel DG Faceplate - Keystone-style	<b>AX102012</b>
12-Port Stainless Steel DG Faceplate - Keystone-style	<b>AX102013</b>

These products are in the process of being assessed for RoHS compliance. Please check our Web Site for the most current RoHS status.

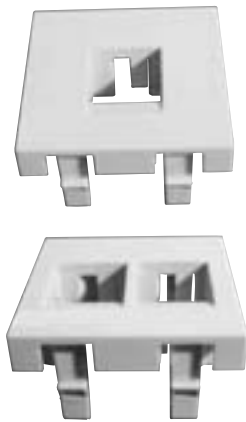
# Workstation Outlets

## European Style Faceplates and Inserts

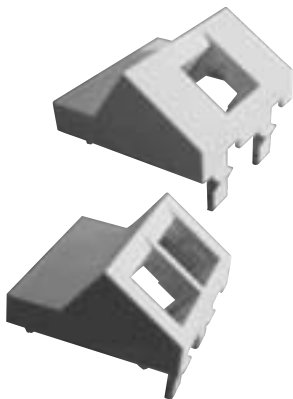
AX101372-73 European “6C” Style Faceplates and AX101377-75-76 European “6C” Inserts



AX101413-14 French Style Faceplates



AX101415-16 French Style Faceplates



### European “6C” Style Faceplate

The European “6C” Style faceplates and Inserts are designed to accept the GigaFlex and EZ-MDVO UTP Modules.

They include a shutter to protect the module against dust and other contaminants.

### French Style Faceplate

The French Style Faceplates are designed to accept the EZ-MDVO and GigaFlex UTP modules as well as all the MDVO multimedia modules. The faceplates can be attached to standard 45 mm x 45 mm boxes or mounting hardware for flush-mount installations.

Description	Belden Part Number
-------------	--------------------

#### Workstation Outlets

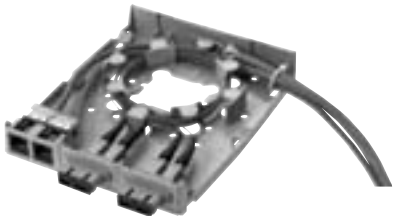
European “6C” Style Faceplate	
European “6C” Style Faceplate, Single Gang, Single Aperture, White	AX101372
European “6C” Style Faceplate, Single Gang, Dual Aperture, White	AX101373
European “6C” Style Faceplate, Double Gang, Quad Aperture, White	AX101374
European “6C” Shuttered Module Holder, 1-port, Flush, White	AX101375
European “6C” Shuttered Module Holder, 1-port, Angled, White	AX101376
European “6C” Blank Insert, White	AX101377
French Style Faceplate	
1-port, Flush, White	AX101413
2-port, Flush, White	AX101414
1-port, Angled, White	AX101415
2-port, Angled, White	AX101416

These products are in the process of being assessed for RoHS compliance. Please check our Web Site for the most current RoHS status.

## Workstation Outlets

### MDVO Multimedia Outlet Boxes, Multi-User Outlet Boxes and Multi-User Adapter Strips

A0643205 MDVO Multimedia Outlet Box, shown here as terminated



AX100222 Multi-User Outlet Box, shown here with modules



AX100223 MDVO Adapter Strip, 12-port



#### MDVO Multimedia Outlet Box

The **MDVO Multimedia Outlet Box** brings unique versatility for multimedia work area installations. The box design provides cable management and helps maintain cable bend radius. The outlet box's low profile design and side-entry offers better protection for patch cords. The outlet box can accept up to six EZ-MDVO, GigaFlex or MDVO Multimedia Modules or three SC Duplex adapters.

The MDVO Multimedia Outlet Box can be mounted directly on the wall or attached to standard electrical boxes. Included with the MDVO Multimedia box are three SC Duplex Mounting bezels and three MDVO Adapters.

#### Multi-User Outlet Box

The **Multi-User Outlet Box** is a versatile box that can be used in many different applications. The outlet box can accommodate up to 24 connections of any type, UTP, fiber or coax. The outlet box is ideal for use as a multi-user telecommunications assembly, or simply as a high-density multimedia telecommunications outlet. The Multi-User Outlet Box can also be used as a wall mounted patch panel in confined areas, such as shallow rooms and cabinets.

#### Multi-User Adapter Strips

The Multi-User Outlet Box design allows for mixed media installations with a choice of connection strips. The box can accept either one or two 12-port **MDVO Adapter Strips, PS5E HD Connector Module Strips (BIX or 110)**, or a combination of both for a maximum of 24 connections.

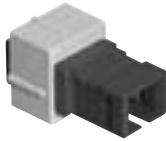
Description	Belden Part Number
<b>Workstation Outlets</b>	
<b>MDVO Multimedia Outlet Box</b>	
6-port, Gray	A0643205
6-port, Almond	A0643206
6-port, White	A0643207
6-port, Black	A0643208
6-port, Ivory	AX102595
<b>Multi-User Outlet Box</b>	
24-port, Gray	AX100219
24-port, Almond	AX100220
24-port, White	AX100221
24-port, Black	AX100222
<b>Multi-User Adapter Strips</b>	
MDVO Adapter Strip, 12-port, Empty, Black	AX100223
PS5E HD-BIX Connector Module Strip, Universal Wiring 12-port, T568A/B	AX100224
PS5E HD-110 Connector Module Strip, Universal Wiring 12-port, T568B/A	AX100494

These products are in the process of being assessed for RoHS compliance. Please check our Web Site for the most current RoHS status.

# Workstation Outlets

## MDVO Multimedia Modules

A0407005 MDVO SC Fiber Module



A0649254 SC Duplex Adapter



A0407010 MDVO ST Compatible Fiber Module



AX101467 MDVO MTRJ Fiber Module



A0406997 MDVO BNC Coaxial Module



A0406999 MDVO Video F Coaxial Module



### MDVO Multimedia Module

**MDVO Multimedia Modules** address audio/video and fiber applications. Fiber modules are available for LC Duplex, SC Simplex, ST Compatible multimode and MT-RJ multimode & single-mode connections. The SC Duplex Adapter is a fiber adapter sleeve with flanges that mounts into the SC Duplex mounting bezel (included in the MDVO Multimedia Outlet box). Audio/video modules are available for SVHS, RCA, BNC and Video F connections.

Description	Belden Part Number				
	Gray	Almond	White	Black	Ivory

### Workstation Outlets

MDVO Multimedia Module					
LC Duplex Multimode	AX102209	AX102210	AX102211	AX102619	
LC Duplex Single-mode	AX102213	AX102214	AX102215	AX102216	
SC Simplex, Multimode	A0407003	A0407004	A0407005	A0407006	AX102596
SC Duplex Adapter, Multimode	A0649254				
ST Compatible, Multimode	A0407007	A0407008	A0407009	A0407010	AX102597
MT-RJ, Multimode	AX101467				
MT-RJ, Single-mode, Blue	AX101466				

Description	Belden Part Number				
	Gray Holder	Almond Holder	White Holder	Black Holder	Ivory Holder
Coaxial, BNC	A0406995	A0406996	A0406997	A0406998	AX102598
Coaxial, Video F	A0406999	A0407000	A0407001	A0407002	AX102599
RCA, feedthru, White insert	AX101823	AX101824	AX101825	AX101826	AX102601
RCA, feedthru, Yellow insert	AX101827	AX101828	AX101829	AX101830	AX102602
RCA, feedthru, Red insert	AX101831	AX101832	AX101833	AX101834	AX102603
RCA, feedthru, Black insert	AX101835	AX101836	AX101837	AX101838	AX102604
SVHS, feedthrough	AX101839	AX101840	AX101841	AX101842	AX102605
3.5mm Stereo	AX102624	AX102625	AX102626	AX102627	AX102628

Custom multimedia connectors are also available, please contact Customer Service for more details.

These products are in the process of being assessed for RoHS compliance. Please check our Web Site for the most current RoHS status.

## Workstation Outlets

### PS5E BIX DVO Outlets and Double Gang Outlet

PS5E BIX DVO Outlets



AX100601 PS5E BIX DVO Module



AX100613 DVO Faceplate, 3-port



AX100640 DVO Faceplate, 4-port



#### PS5E BIX DVO Outlet

The **PS5E BIX DVO Workstation Outlets** are robust and installer-friendly products, combining punch-down connectors with standard modular jacks. The outlet's unique, completely enclosed housing protects the connectors and allows the wires to be front-terminated on BIX Insulation Displacement Connectors (IDC). The snap-on cover plate allows easy access and eliminates visible mounting screws.

PS5E BIX DVO Workstation Outlets offer headroom over the Category 5e cabling standard.

#### PS5E BIX DVO Double Gang Outlet

PS5E BIX DVO Double Gang Workstation Outlets offer high capacity outlet configuration options in the work area. They are created by combining **PS5E BIX DVO Connector Modules and DVO Double Gang Faceplates**.

Each faceplate can accept up to two connector modules. A color-coded icon labeling system can be used to tag each outlet port and simplify network management.

Description	Belden Part Number		
	1-Port	2-Port	4-Port

#### Workstation Outlets

PS5E BIX DVO Outlets			
Surface, T568A-ISDN, Gray	AX100382	AX100390	AX100398
Surface, T568A-ISDN, Almond	AX100383	AX100391	AX100399
Surface, T568A-ISDN, White	AX100384	AX100392	AX100400
Surface, T568A-ISDN, Black	AX100385	AX100393	AX100401
Surface, T568B-ALT, Gray	AX100386	AX100394	AX100402
Surface, T568B-ALT, Almond	AX100387	AX100395	AX100403
Surface, T568B-ALT, White	AX100388	AX100396	AX100404
Surface, T568B-ALT, Black	AX100389	AX100397	AX100405
Flush, T568A-ISDN, Gray	AX100334	AX100342	AX100350
Flush, T568A-ISDN, Almond	AX100335	AX100343	AX100351
Flush, T568A-ISDN, White	AX100336	AX100344	AX100352
Flush, T568A-ISDN, Black	AX100337	AX100345	AX100353
Flush, T568B-ALT, Gray	AX100338	AX100346	AX100354
Flush, T568B-ALT, Almond	AX100339	AX100347	AX100355
Flush, T568B-ALT, White	AX100340	AX100348	AX100356
Flush, T568B-ALT, Black	AX100341	AX100349	AX100357

Description	Belden Part Number			
	T568A-ISDN	T568B-ALT	3-Port	4-Port

PS5E BIX DVO Double Gang Outlet				
PS5E BIX DVO Connector Module, Flush, 1-port, Gray	AX100601	AX100604		
PS5E BIX DVO Connector Module, Flush, 2-port, Gray	AX100602	AX100605		
DVO Double Gang Faceplate, Flush, Gray			AX100613	AX100640
DVO Double Gang Faceplate, Flush, Almond			AX100614	AX100641
DVO Double Gang Faceplate, Flush, White			AX100615	AX100642
DVO Double Gang Faceplate, Flush, Black			AX100616	AX100643

These products are in the process of being assessed for RoHS compliance. Please check our Web Site for the most current RoHS status.

# Workstation Outlets

## Outlet Accessories

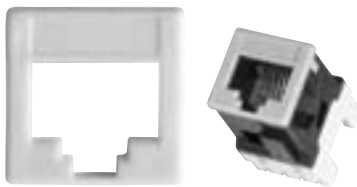
A0405538 MDVO Blank Insert



### MDVO Blank Insert

**MDVO Blank Inserts** can be used in any MediaFlex outlets, Interface plates, MDVO faceplates, adapters or boxes to fill in unused ports.

AX102022 Colored Bezel



### Colored Bezel

The **Colored Bezels** are plastic inserts that fit over the face of GigaFlex and EZ-MDVO Modules to modify their color. They are particularly useful in installations where the churn rate is high and color identification of outlets is critical (ex.: segmented network with security levels). They also contribute to simplifying the management of the cabling infrastructure by using only one color of module for Moves, Adds and Changes (MACs).

AX100196 ID Tab



### ID Tab

**ID Tabs** are color-coded identification caps that can be inserted over the GigaFlex and EZ-MDVO Modules. The ID tabs are available as blank, data or voice coded. They are available in eleven colors to facilitate identification and to match modern office decor.

The flexible identification cap also acts as a protective cover eliminating exposure to dust and other contaminants when the module is not in use.

Description	Belden Part Number
-------------	--------------------

### Workstation Outlets

#### MDVO Blank Insert

Gray	A0405536
Almond	A0405537
White	A0405538
Black	A0405539
Electric White	AX102607
Ivory	AX102600

#### Colored Bezel

Gray	AX102014
Almond	AX102015
White	AX102016
Black	AX102017
Orange	AX102018
Red	AX102019
Yellow	AX102020
Green	AX102021
Blue	AX102022
Purple	AX102023
Brown	AX102024
Ivory	AX102606

Description	Belden Part Number		
	Blank	Data	Voice

#### ID Tab

Gray	AX100182	AX100193	AX100204
Almond	AX100183	AX100194	AX100205
White	AX100184	AX100195	AX100206
Black	AX100185	AX100196	AX100207
Orange	AX100186	AX100197	AX100208
Red	AX100187	AX100198	AX100209
Yellow	AX100188	AX100199	AX100210
Green	AX100189	AX100200	AX100211
Blue	AX100190	AX100201	AX100212
Purple	AX100191	AX100202	AX100213
Brown	AX100192	AX100203	AX100214

These products are in the process of being assessed for RoHS compliance. Please check our Web Site for the most current RoHS status.



# Workstation Outlets

## Tools

AX100749 GigaFlex Connecting Tool



### GigaFlex Connecting Tool

The **GigaFlex Connecting Tool** is a no-impact connecting tool used to terminate cables, pigtails or cross-connect wires on any GigaFlex Module or 110 product. The GigaFlex Tool is a spring-activated hand tool. A single forward movement will seat the wire into the IDC clip and cut off the excess wire. The tool will terminate 22, 24 and 26-AWG plastic insulated solid copper conductors.

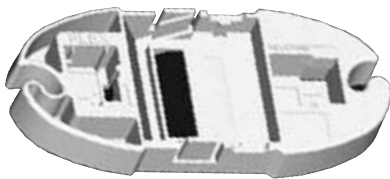
1797B Cable Preparation Tool



### Bonded-Pair Cable Preparation Tool

The **Bonded-Pair Cable Preparation Tool** makes it faster and easier to prepare cables for connector termination. This tool is ideal for use with Belden's DataTwist® 350, MediaTwist®, and DataTwist® 600e Bonded-Pair cables, providing special features that help separate twisted pairs. It can also be used to prepare any nonbonded-pair cable for installation.

AX101852 Termination Station



### Termination Station

The **Termination Station** is an ergonomically designed holder that provides stability to the GigaFlex Module during the termination process. The station has pockets with locking features that steadily holds either MDVO-style or Keystone-style GigaFlex Modules or MediaFlex Inserts during pair placement and wire termination. Cable retainers on each end of the station will secure and hold cables during the pair placements process. The flat bottom surface will provide the required stability to safely terminate the modules. The tool is made of very durable plastic and its low profile makes it an easy tool to use and carry.

### Outlet Release Tool

The **Outlet Release Tool** is a very convenient tool for servicing the MediaFlex and Interface outlets. Its bent tip allows for easy front removal of MediaFlex inserts, especially when used in Angled Entry plates. It is also very useful to extract GigaFlex Modules from miscellaneous mounting hardware and to remove the protective cap for GigaFlex Module re-termination.

AX101185 Outlet Release Tool



Description	Belden Part Number
-------------	--------------------

### Workstation Outlets

Tools	
GigaFlex Connecting Tool	AX100749
Bonded-Pair Cable Preparation Tool	1797B
Termination Station	AX101852
Outlet Release Tool	AX101185

These products are in the process of being assessed for RoHS compliance. Please check our Web Site for the most current RoHS status.



# Mouser Electronics

Authorized Distributor

Click to View Pricing, Inventory, Delivery & Lifecycle Information:

## Belden Wire & Cable:

[A0406997](#) [A0407001](#) [AX101436](#) [AX101441](#) [AX102011](#) [A0407000](#)