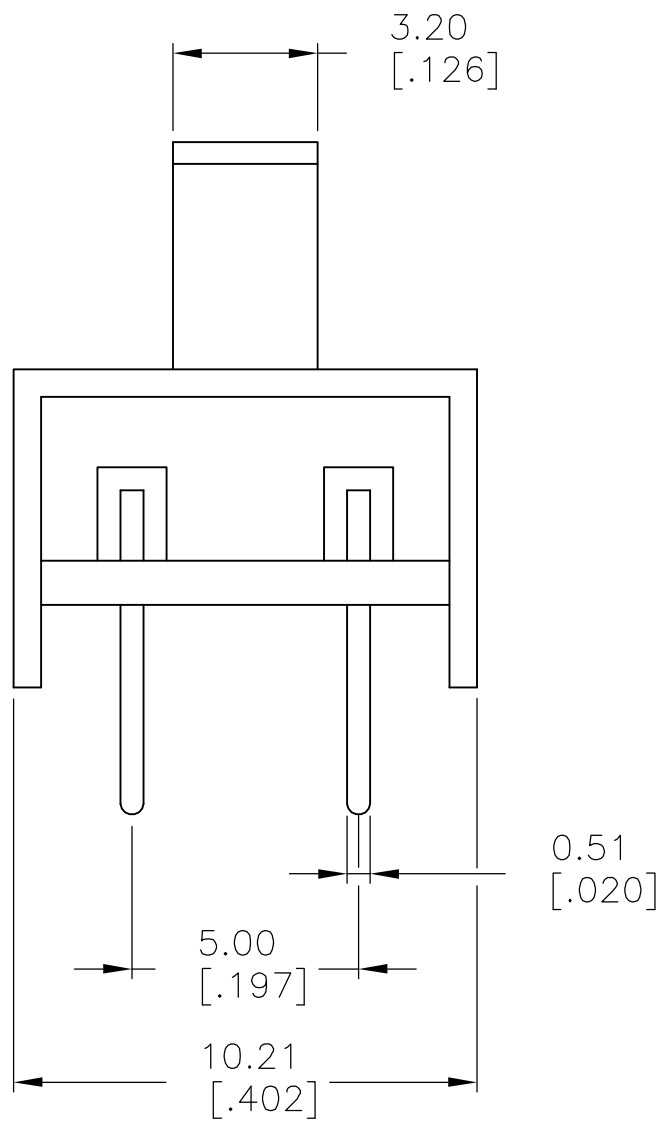
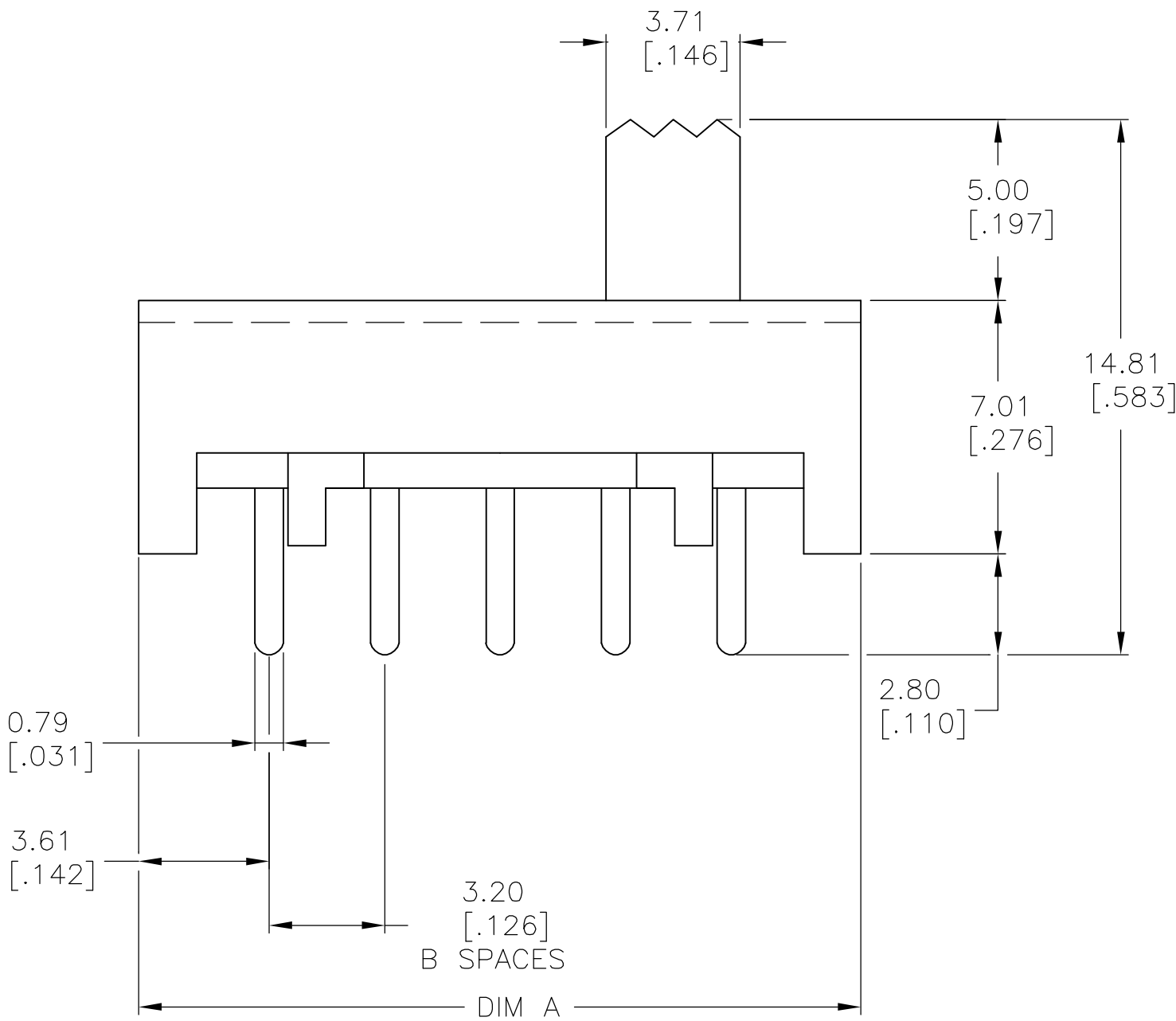
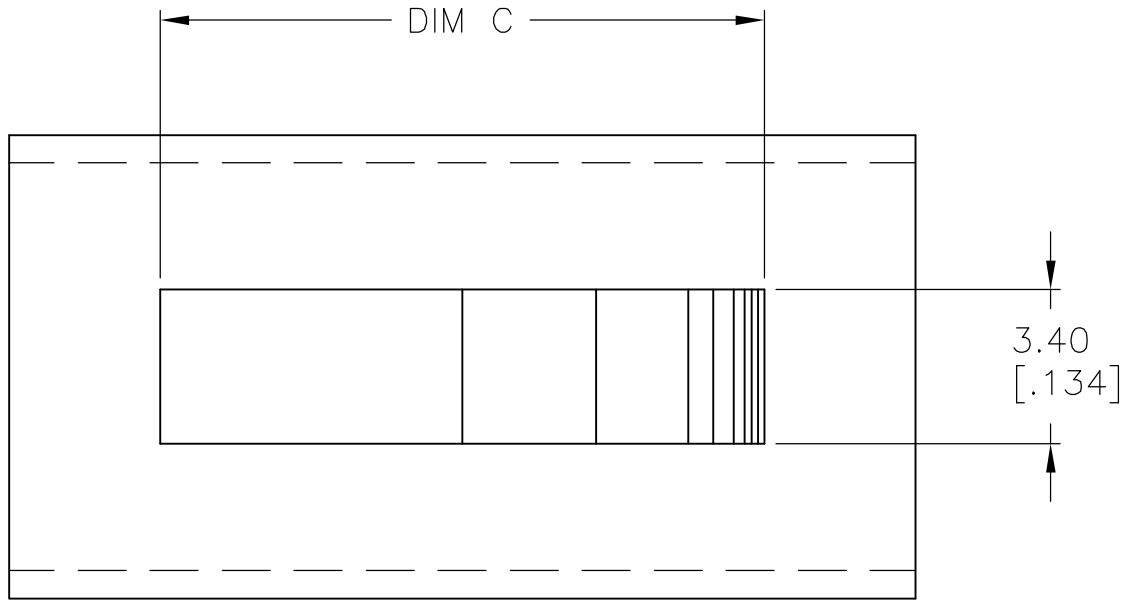


LOC	DIST	REVISIONS			
AD	00	P	LTR	DESCRIPTION	DATE
		B		ECO 06 17718	03OCT06



SPECIFICATIONS:

BREAK—BEFORE—MAKE

MATERIALS:  
FRAME: STEEL, ZINC PLATE  
ACTUATOR: PBT UL94HB, BLACK  
FIXED CONTACT/TERMINAL: COPPER ALLOY, SILVER OVER NICKEL PLATE  
MOVING CONTACT: COPPER ALLOY, SILVER CLAD  
TERMINAL BOARD: PHENOLIC, UL94HB

ELECTRICAL:  
CONTACT RATING: 250 MILLIAMP@125V AC, 150 MILLIAMP@12V DC  
CONTACT RESISTANCE: 30 MILLIOHMS MAX (INITIAL),60 MILLIOHMS AFTER TEST  
INSULATION RESISTANCE: 500 MEGOHMS MIN  
DIELECTRIC STRENGTH: 500 VOLTS RMS AT SEA LEVEL  
LIFE EXPECTANCY: 10,000 CYCLES MIN. NO LOAD, 6,000 AT RATED CURRENT

MECHANICAL:  
ACTUATION FORCE: 250 +150/−100 GRAMS  
TRAVEL: .126 (3.20)

ENVIRONMENTAL:  
OPERATING TEMPERATURE: −10°C TO +60°C  
STORAGE TEMPERATURE: −10°C TO +60°C  
RESISTANCE TO SOLDER HEAT: 260°C FOR 10 SEC PER 109−202, CONDITION B  
SOLDERABILITY PER EIA−364−56A, PROCEDURE 3, CONDITION B

- NOTES:
- ALL MATERIALS AND FINISHES SHALL COMPLY WITH EU DIRECTIVE 2002/95/ECOF 27JAN2003 (ROHS)
  - FOR FUNCTION DIAGRAM SEE SHEET 2 OF 2
  - ALL PERFORMANCE SPECIFICATIONS WERE TESTED IN ACCORDANCE WITH JIS−C−5441 UNLESS OTHERWISE STATED.

.776 [19.71]	6 SPACES	1.039 [26.39]	6	SLS260PC04	1825080−5
.650 [16.51]	5 SPACES	.913 [23.19]	5	SLS250PC04	1825080−4
.524 [13.31]	4 SPACES	.787 [19.99]	4	SLS240PC04	1825080−3
.398 [10.11]	3 SPACES	.661 [16.79]	3	SLS230PC04	1825080−2
.272 [6.91]	2 SPACES	.535 [13.59]	2	SLS220PC04	1825080−1
DIM C	DIM B	DIM A	POSITION	ALCO PART NUMBER	TYCO PART NUMBER

THIS DRAWING IS A CONTROLLED DOCUMENT.		DWN B.S.VISWESWARA	02MAR05	Tyco Electronics Corporation Harrisburg, Pa 17105−3608	
DIMENSIONS: mm [INCHES]		CHK M.S.SARVER	−	NAME	
TOLERANCES UNLESS OTHERWISE SPECIFIED:		PRODUCT SPEC	−	SLIDE SWITCH, SLS***PC04 SERIES, 2 TO 6 POSITION	
0 PLC ± − 1 PLC ± − 2 PLC ± − 3 PLC ± 010 [0.25] 4 PLC ± − ANGLES ± ± −		APPLICATION SPEC	−	−	
MATERIAL SEE SPECIFICATIONS		WEIGHT	−	SIZE A1	RESTRICTED TO
−		CUSTOMER DRAWING	SCALE 6:1	DRAWING NO 00779	SHEET 1 OF 2
−		−	−	REV B	−

8

7

6

5

4

3

2

1

THIS DRAWING IS UNPUBLISHED.

RELEASED FOR PUBLICATION

© COPYRIGHT

BY TYCO ELECTRONICS CORPORATION. ALL RIGHTS RESERVED.

LOCAD

DIST00

REVISIONS					
P	LTR	DESCRIPTION	DATE	DWN	APVD
—	—	SEE SHEET 1	—	—	—

PART NUMBER

POSITION

BOTTOM VIEW

1825080—1

2

123

456

1825080—2

3

1234

5678

1825080—3

4

12345

678910

1825080—4

5

123456

789101112

1825080—5

6

1234567

891011121314

FUNCTION DIAGRAM

— INDICATES TERMINALS CONNECTED

123

456

123

456

1234

5678

1234

5678

1234

5678

12345

678910

12345

678910

12345

678910

12345

678910

123456

789101112

123456

789101112

123456

789101112

123456

789101112

123456

789101112

1234567

891011121314

1234567

891011121314

1234567

891011121314

1234567

891011121314

1234567

891011121314

1234567

891011121314

THIS DRAWING IS A CONTROLLED DOCUMENT.

DIMENSIONS:  
mm [INCHES]

0 PLC  
1 PLC  
2 PLC  
3 PLC  
4 PLC  
ANGLES  
FINISH

± —  
± —  
± —  
± 010 [0.25]  
± —  
—  
—

MATERIAL  
SEE SPECIFICATIONS

—

DWN  
B.S.VISWESWARA

CHK  
M.S.SARVER

APVD  
—

PRODUCT SPEC  
—

APPLICATION SPEC  
—

WEIGHT  
—

NAME  
SEE  
2 TO 6 POSITION

SIZE  
A1

CAGE CODE  
00779

DRAWING NO  
1825080

RESTRICTED TO  
—

CUSTOMER DRAWING

SCALE  
1:1

SHEET  
2

OF  
2

REV  
B

tyco  
Electronics

Tyco Electronics Corporation  
Harrisburg, Pa 17105-3608

# Mouser Electronics

Authorized Distributor

Click to View Pricing, Inventory, Delivery & Lifecycle Information:

[TE Connectivity:](#)

[SLS260PC04](#)