

#### NOTES:

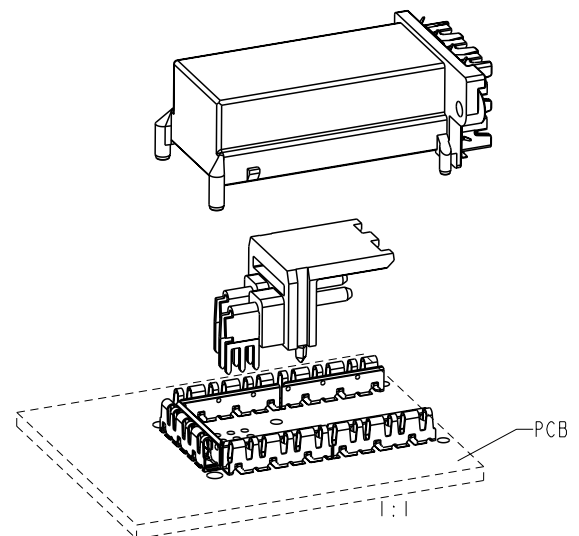
1. BODY MATERIAL: LIQUID CRYSTAL POLYMER 30% GLASS FLAME RETARDANT ACC. UL 94 V0
2. COVER MATERIAL: ZINC ALLOY
3. TERMINAL MATERIAL: TINBRONZE
4. GROUND SPRING MATERIAL: STAINLESS STEEL
5. CONTACT STRIP MATERIAL: STAINLESS STEEL
6. PCB THICKNESS: 1.8-2.4 mm.
7. PRODUCT MARKING: PART NUMBER & MANUFACT. DATE

#### 8-ROHS INFORMATION:

-This product meets European Union Directives and other country regulations as described in GS-22-008.

-The housing will withstand exposure to 260°C peak temperature for 10 second in a wave solder application with a 1.6mm minimum thick circuit board. See Application notes/procedures if they are available.

-Packaging spec: see GS-14-920.



| rev | ecn no    | dr  | date       |
|-----|-----------|-----|------------|
| A   | SW 8041   | RNA | 1998/03/20 |
| B   | SW 8087   | SDc | 1998/04/24 |
| C   | SW 9142   | HCA | 1999/11/24 |
| D   | SW 0019   | JJA | 2000/02/24 |
| E   | LS05-0080 | JTA | 2005/11/30 |
| F   | LS06-0143 | LGO | 2006/09/26 |
| G   | LS07-0255 | JTA | 2007/11/12 |



| Performance level |                  |
|-------------------|------------------|
| 72847-1XXLF       | Telcordia CO.    |
| 72847-2XXLF       | Customer Special |

|                                       |             |            |                |        |       |                     |          |            |          |           |              |      |
|---------------------------------------|-------------|------------|----------------|--------|-------|---------------------|----------|------------|----------|-----------|--------------|------|
| www.fciconnect.com                    |             |            | surface        |        | ✓     | tolerance std       |          | projection | mm       |           |              |      |
|                                       |             |            | ISO 1302       |        |       | ISO 406 ISO 1101    |          |            |          |           |              |      |
| TOLERANCES UNLESS OTHERWISE SPECIFIED |             |            |                |        |       |                     |          |            |          |           |              |      |
| Dr                                    | JJA         | 1998/03/20 | ANGULAR        | LINEAR | 0.X   | ±0.3                | size     | Scale      |          |           |              |      |
| Eng                                   | J Grek      | 1998/03/23 |                |        | 0.XX  | ±0.1                | A4       | 3:2        |          |           |              |      |
| Chr                                   | H Carneling | 1998/03/24 | 0°             | ±2°    | 0.XXX | ±0.05               |          |            | ECN      | LS07-0255 |              |      |
| Appr                                  | J Jacobsson | 1998/03/25 | Product family |        |       | Sofix               | Spec ref | RELEASED   |          |           |              |      |
|                                       |             |            | title          |        |       | CONCEPT RIGHT ANGLE |          |            | dwg no   | 72847_C   |              | Rev. |
|                                       |             |            |                |        |       |                     |          |            |          |           |              |      |
|                                       |             |            | catalog no     |        |       |                     |          |            | CUSTOMER |           | sheet 1 of 6 |      |

REV F - 2006-04-17

PDM: Rev:G

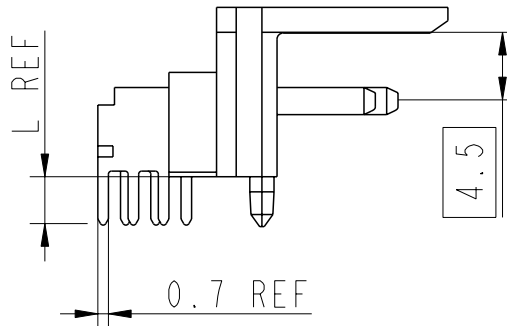
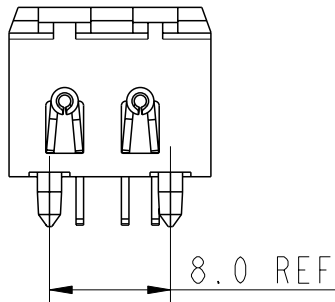
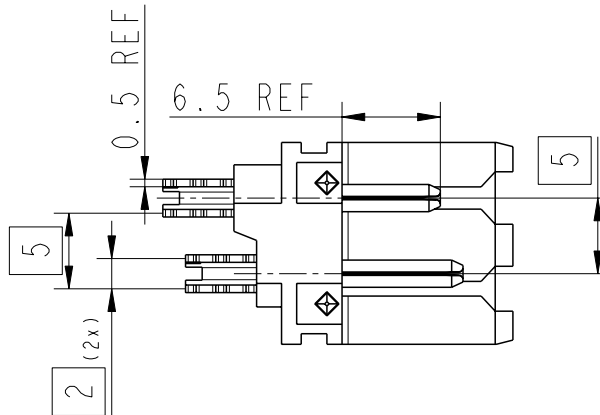
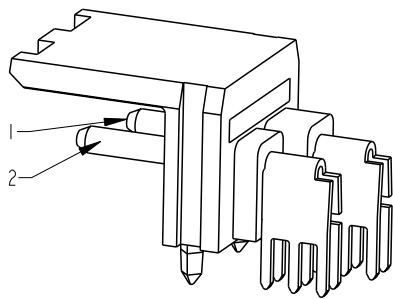
STATUS: Released

Printed: Aug 01, 2010



Copyright FCI.

# CONNECTOR



LEAD FREE PRODUCT NUMBER

| KIT: 72847-X0XLF |     |
|------------------|-----|
| COMPONENTS       | QTY |
| GROUP SPRING     | 1   |
| SHIELD COVER     | 1   |
| CONNECTOR        | 1   |
| CONTACT SPRING   | 1   |

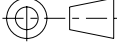


LEAD FREE PRODUCT NUMBER

| PRODUCT NUMBER | L   |
|----------------|-----|
| 72841-X02LF    | 2.2 |
| 72841-X03LF    | 2.7 |



Dimension with oval around are critical dimensions including any attached geometrical tolerance. Other features or stand-alone geometrical tolerances being critical have a note "CRITICAL FEATURE" below the item.

A symbol (x: drawing current revision) will be next to any dimension, view or note which has been modified with the current drawing revision.

|   |             |            |  |  |                                   |      |   |   |           |
|---|-------------|------------|--|--|-----------------------------------|------|---|---|-----------|
| www.fciconnect.com  |             |            | surface<br>ISO 1302                                |  | tolerance std<br>ISO 406 ISO 1101 |      | projection<br> | mm<br> |           |
|   |             |            | TOLERANCES UNLESS OTHERWISE SPECIFIED              |  |                                   |      |   |   |           |
| Dr  | JJA         | 1998/03/20 | ANGULAR<br><br>LINEAR                              |  | 0.X                               | ±0.3 | size<br>A4  | Scale<br>1:1  |           |
| Eng   | J Grek      | 1998/03/23 |  |  | 0.XX                              | ±0.1 |   |   |           |
| Chr   | H Carneling | 1998/03/24 |  |  | 0°                                | ±R°  | 0.XXX   | ±0.05   |           |
| Appr  | J Jacobsson | 1998/03/25 | Product family                                     |  |                                   |      | Sofix   | ECN LS07-0255   |           |
|   |             |            |  |  |                                   |      | Spec ref  | RELEASED  |           |
|  |             | title      | CONCEPT RIGHT ANGLE<br>HEADER POWER WITHOUT FILTER |  |                                   |      | dwg no  | 72847_C   | Rev.<br>G |
|   |             |            |  |  |                                   |      |   |   |           |
|   |             | catalog no |  |  |                                   |      | CUSTOMER  | sheet 2 of 6  |           |

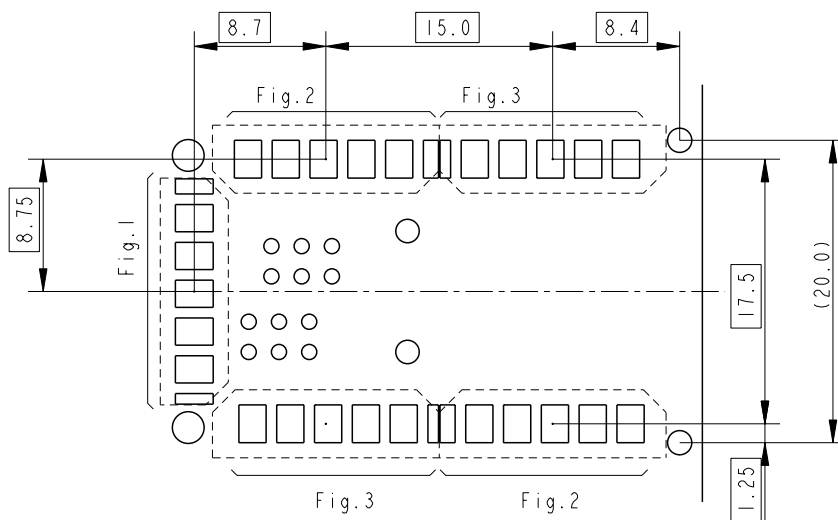
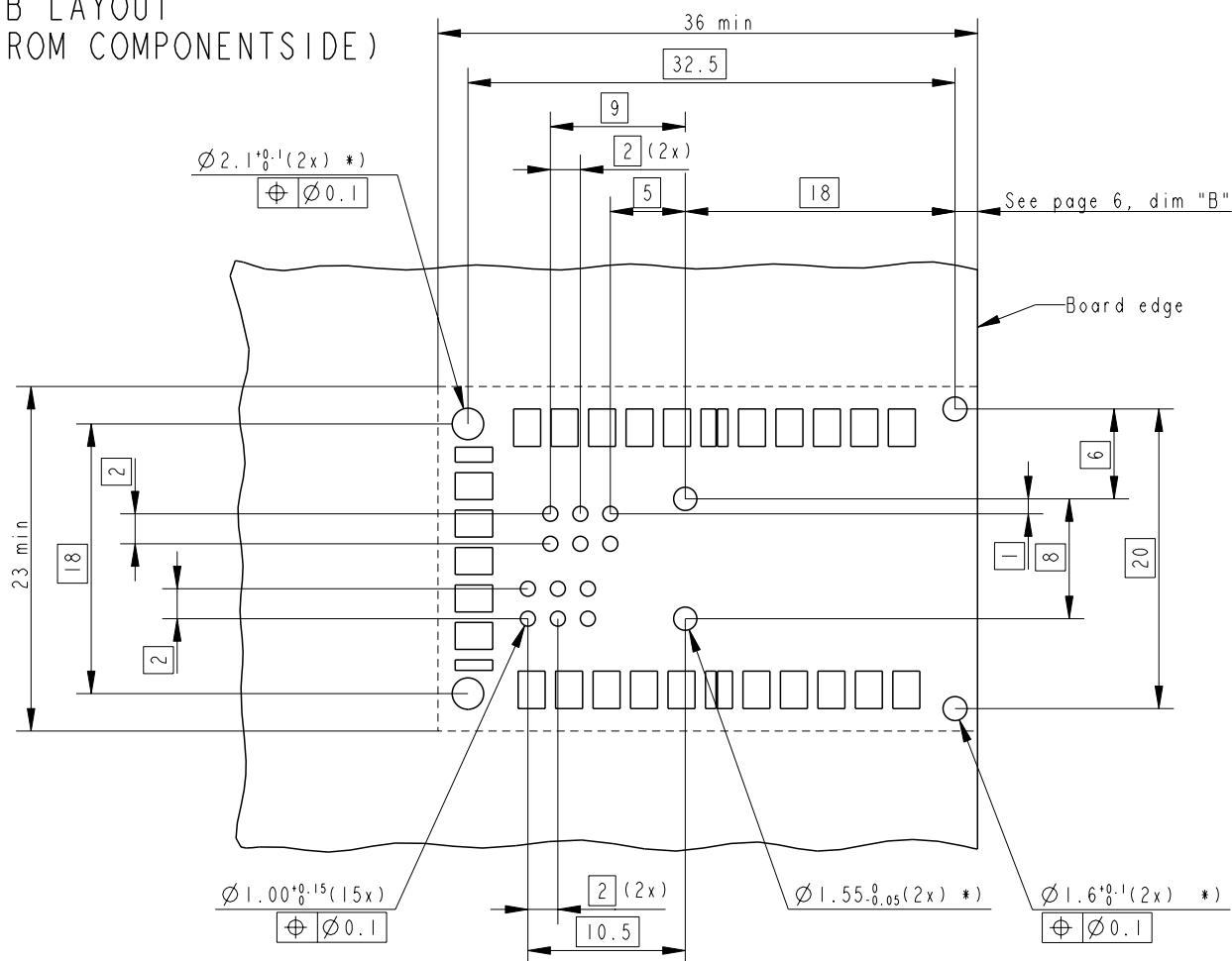
REV F - 2006-04-17

PDM: Rev:G

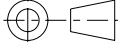


STATUS:Released

Printed: Aug 01, 2010

# PCB LAYOUT (FROM COMPONENTSIDE)



\*) unplated holes

|   |             |            |                                       |          |                                   |       |   |              |   |           |
|---|-------------|------------|---------------------------------------|----------|-----------------------------------|-------|---|--------------|---|-----------|
| www.fciconnect.com  |             |            | surface<br>ISO 1302                   |          | tolerance std<br>ISO 406 ISO 1101 |       | projection<br> |              | mm<br> |           |
|   |             |            | TOLERANCES UNLESS OTHERWISE SPECIFIED |          |                                   |       |   |              |   |           |
| Dr  | JJA         | 1998/03/20 | ANGULAR                               | LINEAR   | 0.X                               | ±0.3  | size<br>A4  | Scale<br>1:1 |   |           |
| Eng   | J Grek      | 1998/03/23 |                                       |          | 0.XX                              | ±0.1  |   |              |   |           |
| Chr   | H Carneling | 1998/03/24 |                                       |          | 0.XXX                             | ±0.05 |   |              |   |           |
| Appr  | J Jacobsson | 1998/03/25 | Product family                        |          |                                   |       | Sofix   | Spec ref     |   | RELEASED  |
|  |             | title      | CONCEPT RIGHT ANGLE                   |          |                                   |       | dwg no  | 72847_C      |   | Rev.<br>G |
|   |             |            | HEADER POWER WITHOUT FILTER           |          |                                   |       |   |              |   |           |
|   |             |            | catalog no                            |          |                                   |       |   |              |   |           |
|   |             |            |                                       | CUSTOMER |                                   |       | sheet 3 of 6  |              |   |           |

REV F - 2006-04-17

PDM: Rev:G

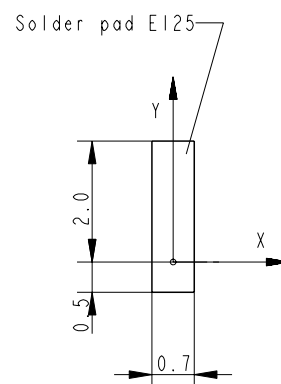
STATUS:Released

Printed: Aug 01, 2010

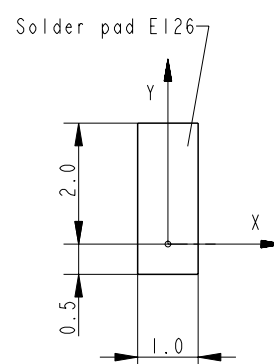


Copyright FCI.

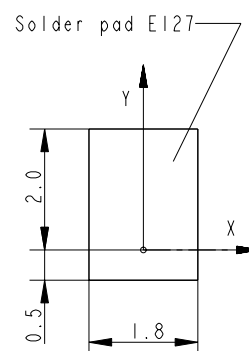
5:1



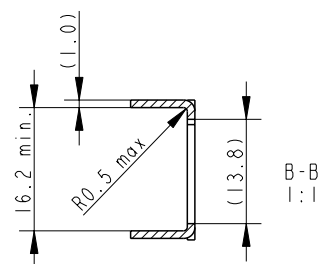
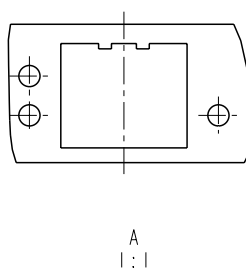
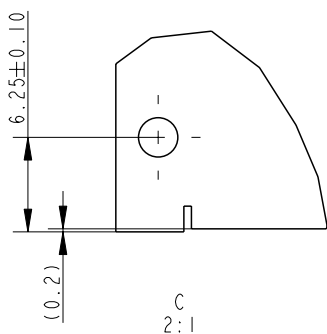
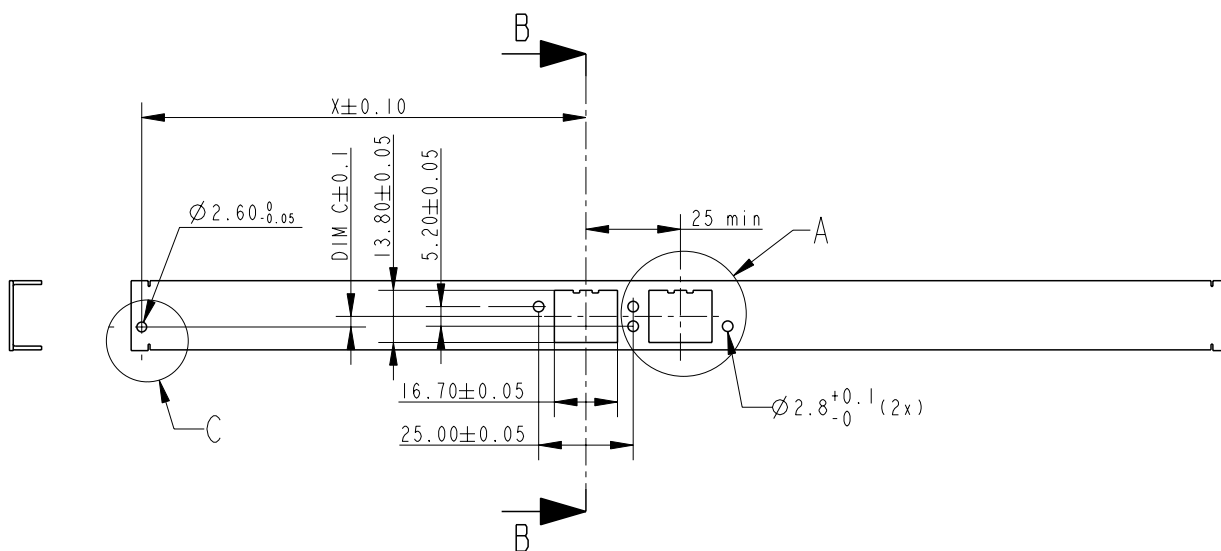
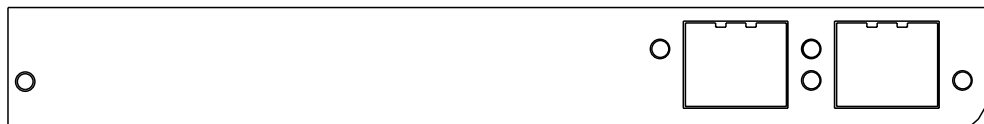
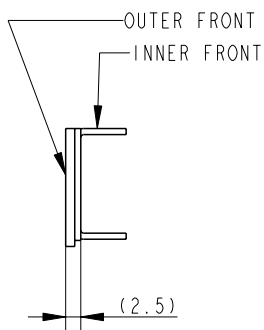
5:1



5:1

REV E - 2006-04-17

# FRONT LAYOUT



| BUILDING PRACTICE | DIM A |
|-------------------|-------|
| IEC 60917-2-2     | 2.80  |
| IEC 60297-3 (19") | 2.76  |

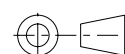
www.fciconnect.com

surface  
ISO 1302



tolerance std  
ISO 406 ISO 1101

projection  
size



mm



Scale  
1:1

|      |             |            |                |  |        |      |       |             |              |
|------|-------------|------------|----------------|--|--------|------|-------|-------------|--------------|
| Dr   | JJA         | 1998/03/20 | ANGULAR        |  | LINEAR | 0.X  | ±0.3  | size<br>A 4 | Scale<br>1:1 |
| Eng  | J Grek      | 1998/03/23 |                |  |        | 0.XX | ±0.1  |             |              |
| Chr  | H Carneling | 1998/03/24 |                |  |        | 0°   | ±R°   |             |              |
| Appr | J Jacobsson | 1998/03/25 | Product family |  |        |      | Sofix | ECN         | LS07-0255    |
|      |             |            | Product family |  |        |      | Sofix | Spec ref    | RELEASED     |



title  
CONCEPT RIGHT ANGLE  
HEADER POWER WITHOUT FILTER

catalog no

dwg no

72847\_C

CUSTOMER

sheet 5 of 6

Rev.  
G

REV F - 2006-04-17

PDM: Rev:G

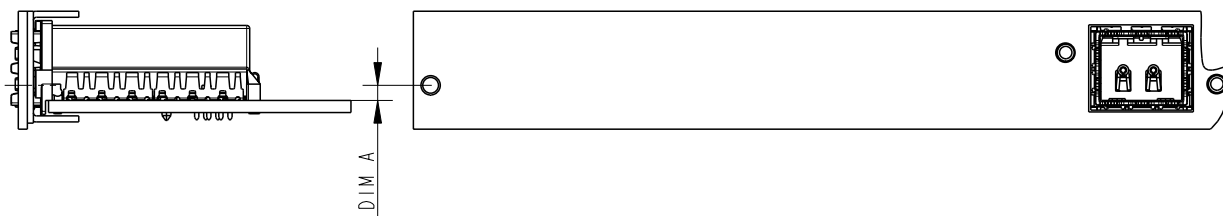
STATUS:Released

Printed: Aug 01, 2010

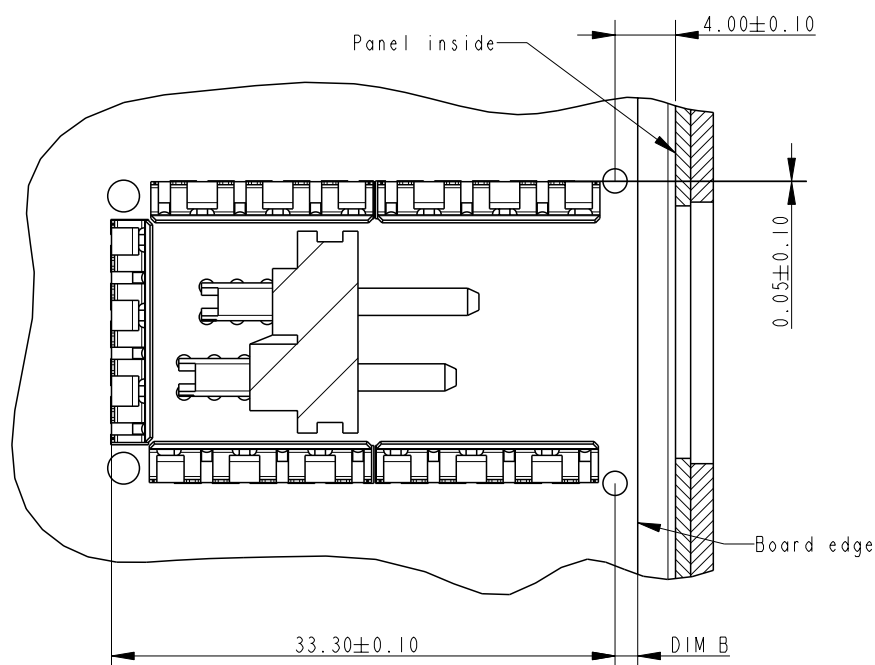


Copyright FCI.

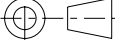


# ASSEMBLY LAYOUT



A - A  
2:1



| BUILDING PRACTICE | DIM A | DIM B |
|-------------------|-------|-------|
| IEC 60917-2-2     | 2.5   | 1.5   |
| IEC 60297-3 (19") | 2.54  | 1.46  |

|   |             |            |                             |        |       |                                      |            |   |  |   |           |
|---|-------------|------------|-----------------------------|--------|-------|--------------------------------------|------------|---|--|---|-----------|
| www.fciconnect.com  |             |            | surface<br>ISO 1302         |        | ✓     | tolerance std<br>ISO 406    ISO 1101 |            | projection<br> |  | mm<br> |           |
| TOLERANCES UNLESS OTHERWISE SPECIFIED   |             |            |                             |        |       |                                      |            |   |  |   |           |
| Dr  | JJA         | 1998/03/20 | ANGULAR                     | LINEAR | 0.X   | ±0.3                                 | size<br>A4 | Scale<br>3:2  |  |   |           |
| Eng   | J Grek      | 1998/03/23 |                             |        | 0.XX  | ±0.1                                 |            |   |  |   |           |
| Chr   | H Carneling | 1998/03/24 |                             |        | 0.XXX | ±0.05                                |            | ECN    LS07-0255  |  |   |           |
| Appr  | J Jacobsson | 1998/03/25 | Product family              |        |       |                                      | Sofix      | Spec ref  |  | RELEASED  |           |
|  |             | title      | CONCEPT RIGHT ANGLE         |        |       |                                      | dwg no     | 72847_C   |  |   | Rev.<br>G |
|   |             |            | HEADER POWER WITHOUT FILTER |        |       |                                      |            |   |  |   |           |
|   |             |            | catalog no                  |        |       |                                      |            | CUSTOMER  |  |   |           |

REV F - 2006-04-17

PDM: Rev:G

STATUS:Released

Printed: Aug 01, 2010



Copyright FCI.

# Mouser Electronics

Authorized Distributor

Click to View Pricing, Inventory, Delivery & Lifecycle Information:

[FCI / Amphenol:](#)

[72847-203LF](#) [72847-202LF](#)