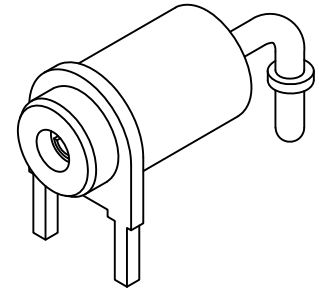
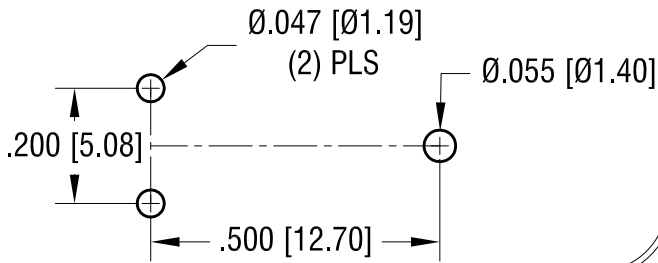
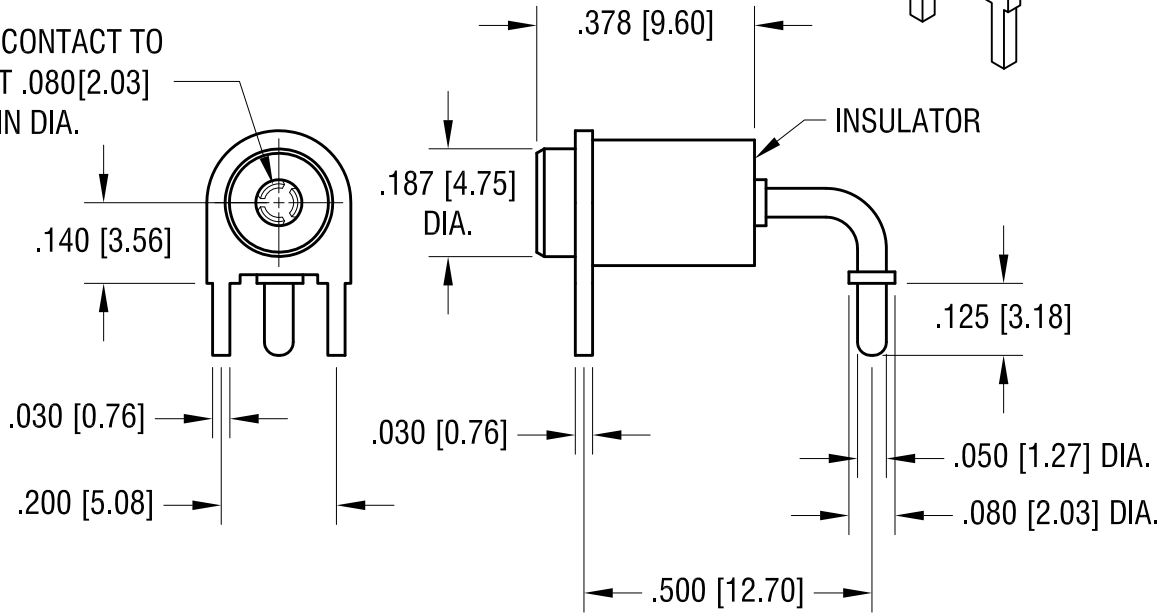


THIS DOCUMENT IS THE PROPERTY OF KEYSTONE ELECTRONICS CORP. AND SHALL NOT BE REPRODUCED, DISTRIBUTED OR USED AS A BASIS FOR MANUFACTURE WITHOUT PRIOR WRITTEN PERMISSION FROM KEYSTONE ELECTRONICS CORP.

**MOUNTING DETAIL**



SPRING CONTACT TO ACCEPT .080 [2.03] PIN DIA.



**NOTES:**

1. TERMINAL JACK: MAT'L - BERYLLIUM COPPER (QQ-C-533)
2. BUSHING: MAT'L - PTFE
3. MOUNTING BRACKET: MAT'L - BRASS

PART NO.	COLOR
11016	WHITE
11016-R	RED
11016-B	BLACK

**KEYSTONE ELECTRONICS CORP.**  
 www.keyelco.com • ASTORIA, N.Y. 11105-2017 • Tel (718) 956-8900

PART NAME: **HORIZONTAL INSULATED TEST JACK**

MATERIAL: **AS NOTED**

FINISH: <b>GOLD PLATE</b>	DRN BY: <b>N.T.</b>	DATE: <b>7.10.07</b>
	APP'D: <b>LN</b>	SCALE: <b>3X</b>

TOLERANCES: INCH [MM]  
 DECIMAL:  $\pm .005$  [ $\pm 0.15$ ]  
 ANGULAR:  $\pm 1^\circ$   
 UNLESS OTHERWISE SPECIFIED

CODE: **C/M** DWG NO.: **11016-**

DATE	DESCRIPTION	REV.

# Mouser Electronics

Authorized Distributor

Click to View Pricing, Inventory, Delivery & Lifecycle Information:

[Keystone Electronics:](#)

[11016-B](#)