

THIS DRAWING IS UNPUBLISHED.

RELEASED FOR PUBLICATION

2003

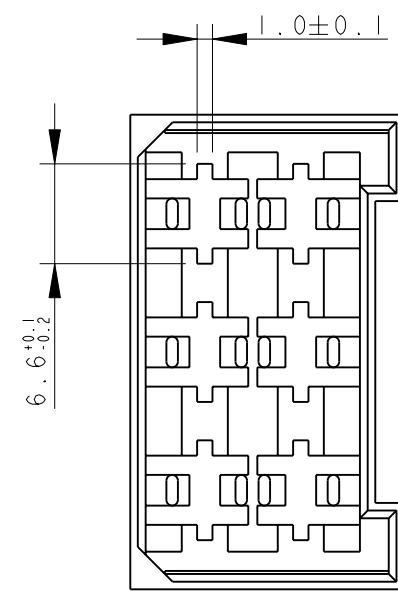
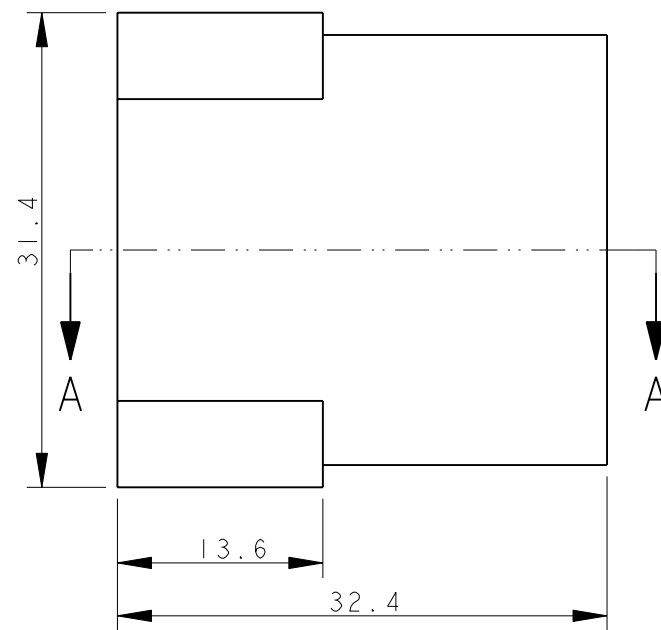
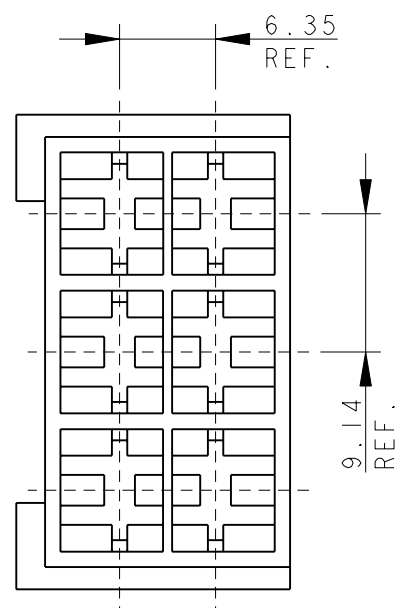
© COPYRIGHT 2003

ALL RIGHTS RESERVED.

LOC IR DIST -

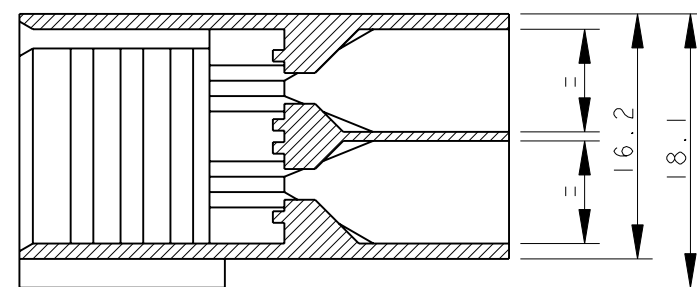
REVISIONS

| P | LTR | DESCRIPTION | DATE | DWN | APVD |
|---|-----|------------------------------------|-------------|-----|------|
| | AL | REDRAWN AND UPDATED, ECR-06-009404 | 02 MAY 2006 | HY | GT |
| | AL1 | REVISED PER ECO-09-026346 | 26NOV09 | KK | AEG |
| | AL2 | ECR-10-022530 | 14JUN11 | KK | HMR |
| | AL3 | PN 2-180906-0 RE-ACTIVATED | 05MAR2012 | PKS | RRP |

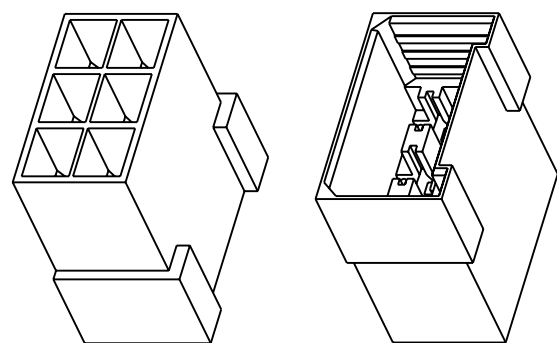


- 1 PA 6.6 UNFILLED, UL 94-V2
- 2 PA 6.6 UNFILLED UL 94 V0 & ACCORDING TO IEC 60335-1 NORM.
- 3 PA 6.6 20% GLASS FIBER FILLED, TECHNOL A 216 V20.
- 4 OBSOLETE PARTS: OBSOLETE CIS STREAMLINING PER D.RENAUD/D.SINISI

SECTION A - A



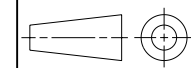
| NOTE | COLOUR | MATERIAL | TE P/N | REV |
|------------|---------|----------|-----------------------|-----|
| 4 OBSOLETE | NATURAL | 1 | 4-180906-0 | AK |
| | NATURAL | 3 | 3-180906-0 | AK |
| | NATURAL | 2 | 2-180906-0 | AL |
| | ORANGE | | 0-180906-9 | AK |
| 4 OBSOLETE | VIOLET | | 0-180906-8 | AK |
| | BROWN | | 0-180906-6 | AK |
| | BLACK | | 0-180906-5 | AK |
| 4 OBSOLETE | YELLOW | 1 | 0-180906-4 | AK |
| | BLUE | | 0-180906-3 | AK |
| | GREEN | | 0-180906-2 | AK |
| | RED | | 0-180906-1 | AK |
| | NATURAL | | 0-180906-0 | AK |



SCALE 1:1

THIS DRAWING IS A CONTROLLED DOCUMENT.

DIMENSIONS: mm



TOLERANCES UNLESS OTHERWISE SPECIFIED:

| | |
|--------|------|
| 0 PLC | ±- |
| 1 PLC | ±0.3 |
| 2 PLC | ±- |
| 3 PLC | ±- |
| 4 PLC | ±- |
| ANGLES | ±2° |
| FINISH | - |

MATERIAL SEE TABLE

DWN H. YAALI 18APR2006

CHK H. YAALI

APVD G. TURCO

PRODUCT SPEC 108-20020

APPLICATION SPEC -

WEIGHT -

CUSTOMER DRAWING



NAME
FASTIN-FASTON Connector, 6.3 mm series TAB HOUSING 6 WAY

SIZE A3 CAGE CODE - DRAWING NO C-180906 RESTRICTED TO -

SCALE 2:1 SHEET 1 OF 1 REV AL3

Mouser Electronics

Authorized Distributor

Click to View Pricing, Inventory, Delivery & Lifecycle Information:

[TE Connectivity:](#)

[180906-5](#)