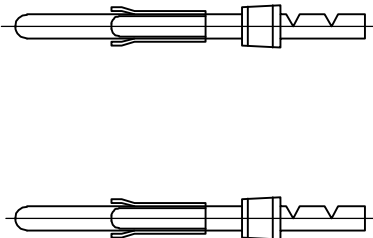
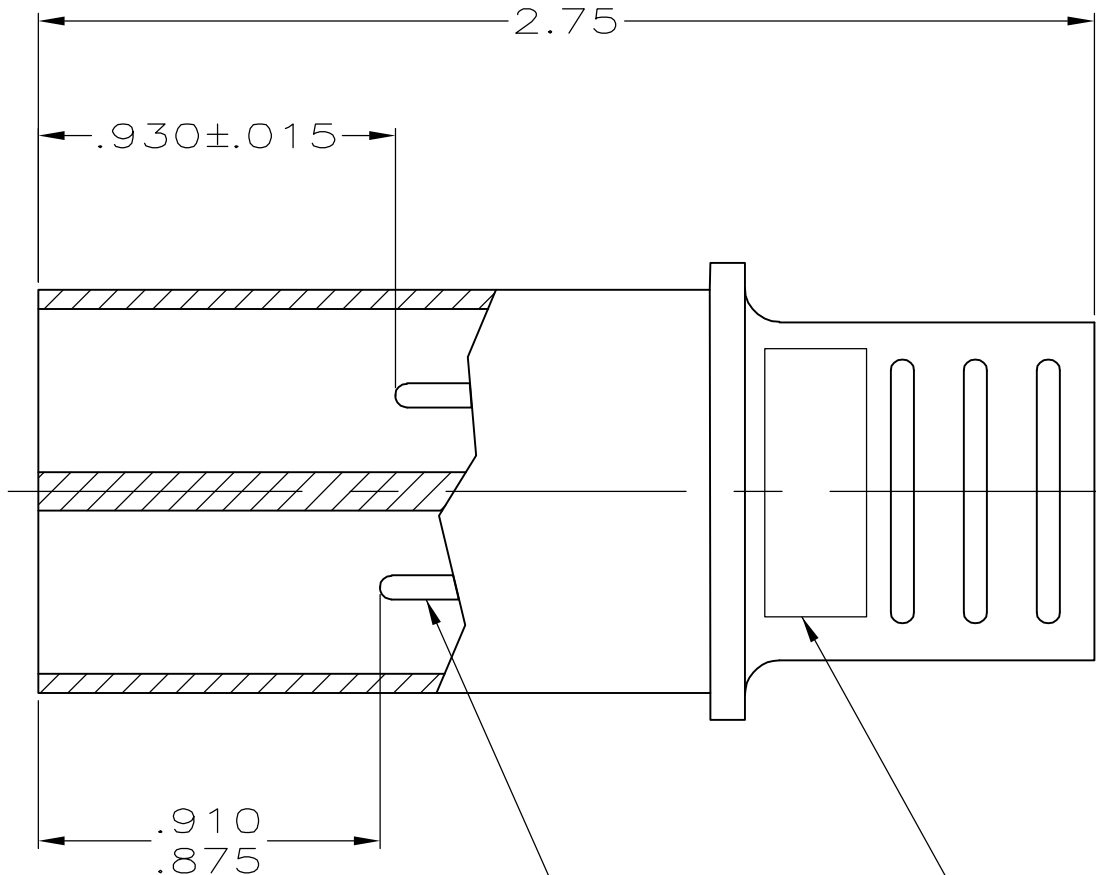
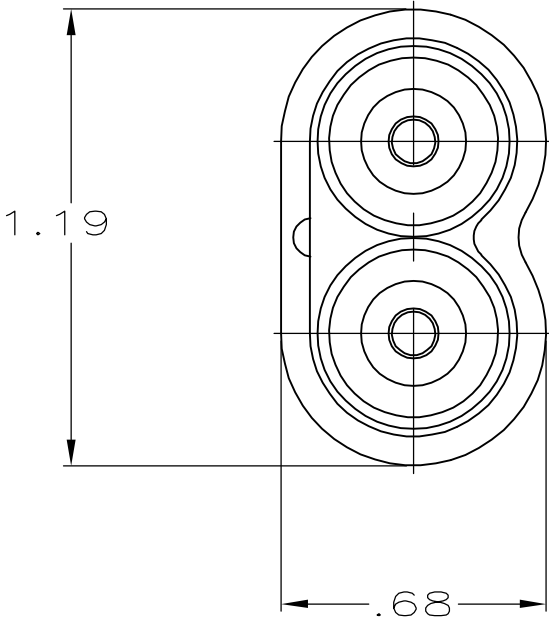


| LOC | DIST | REVISIONS | | | | |
|-----|------|-----------|-----|----------------------|-------|------|
| DF | S0 | P | LTR | DESCRIPTION | DATE | DWN |
| | | | G | REV PER 0H14-0191-05 | 05-05 | AA |
| | | | | | | APVD |
| | | | | | | DE |



TYPE III PIN

AMP PART NO &
DATE CODE IN
THIS APPROX AREA

GROUND PIN

| | | | | |
|--------------------------|------------------------|-------------------------|-----------|----------|
| TIN | 18-16 AWG | 1-66099-5 | 90067-2 | 862434-7 |
| TIN | 22-20 AWG | 1-66400-0 | 90067-2 | 862434-6 |
| GOLD | 18-16 AWG | 66099-1 | 90067-2 | 862434-5 |
| TIN-LEAD | 22-20 AWG | 66400-1 | 90067-2 | 862434-4 |
| TIN-LEAD | 18-16 AWG | 66099-2 | 90067-2 | 862434-3 |
| TIN-LEAD | 22-20 AWG | 66400-1 | 90067-2 | 862434-2 |
| TIN-LEAD | 18-16 AWG | 66099-2 | 90067-2 | 862434-1 |
| CONTACT PLATING (REF) | WIRE RANGE FOR PINS | PIN PART NO. QTY = 2 | HAND TOOL | PART NO. |

THIS DRAWING IS A CONTROLLED DOCUMENT.

DIMENSIONS:
INCHES

MATERIAL
-

TOLERANCES UNLESS
OTHERWISE SPECIFIED:

| | | |
|--------|---|------|
| 0 PLC | ± | - |
| 1 PLC | ± | - |
| 2 PLC | ± | .02 |
| 3 PLC | ± | .005 |
| 4 PLC | ± | - |
| ANGLES | ± | - |
| FINISH | - | - |

DWN
C.C.THOMAS
15-MAY-03

CHK
D. EABY
15-MAY-03

APVD
D. EABY
15-MAY-03

PRODUCT SPEC
-

APPLICATION SPEC
-

WEIGHT
-

CUSTOMER DRAWING

tyco
Electronics

Tyco Electronics Corporation
Harrisburg, Pa 17105-3608

NAME
PLUG KIT
2 CAVITY
LGH

SIZE
A2

CAGE CODE
00779

DRAWING NO
C=862434

RESTRICTED TO
-

SCALE
2:1

SHEET
1

OF
1

REV
G

Mouser Electronics

Authorized Distributor

Click to View Pricing, Inventory, Delivery & Lifecycle Information:

[TE Connectivity:](#)

[862434-6](#)