

4

3

2

1

THIS DRAWING IS UNPUBLISHED.

RELEASED FOR PUBLICATION

© COPYRIGHT

ALL RIGHTS RESERVED.

LOC

DIST

REVISIONS

P	LTR	DESCRIPTION	DATE	DWN	APVD
	A2	ECR-14-001894	13FEB2014	GK	HMR

REPLACED BY OCEAN STYLE APPLICATOR PART
NUMBER 2151457-1

FOR REPLACEMENT PARTS FOR APPLICATOR 1855187
REFER TO ADDITIONAL PAGE(S). SPARE PARTS KIT (IF LISTED)
WILL REMAIN AVAILABLE.

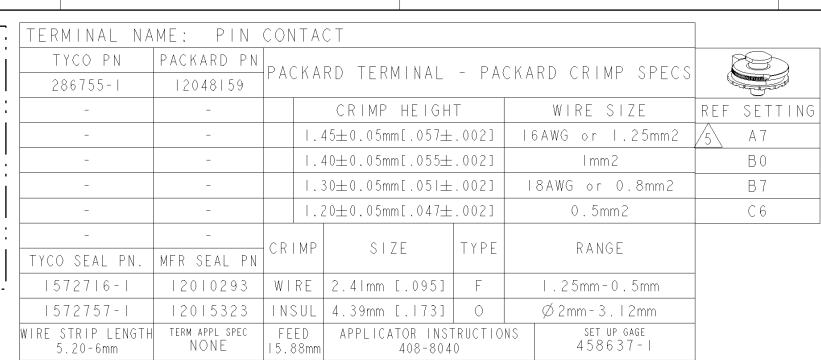
THE REPLACEMENT OCEAN STYLE APPLICATOR HAS THE
SAME TERMINATOR/PRESS INTERFACE AS APPLICATOR
1855187

THIS DRAWING IS A CONTROLLED DOCUMENT.		DWN	GOPALAKRISHNA HV			
		CHK	RAGHAVENDRA			
		APVD	RAGHAVENDRA			
		PRODUCT SPEC				
		APPLICATION SPEC				
		WEIGHT				
		CUSTOMER DRAWING		SCALE	SHEET 1 OF 2	
				REV	A2	

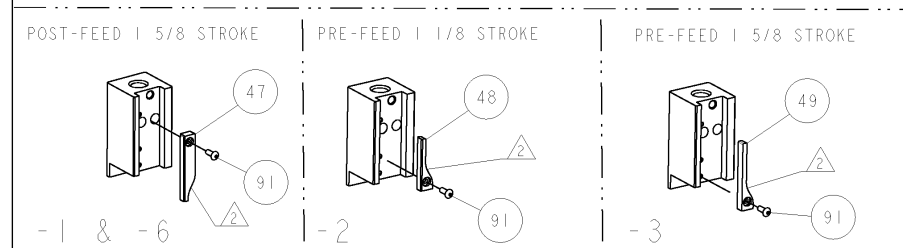
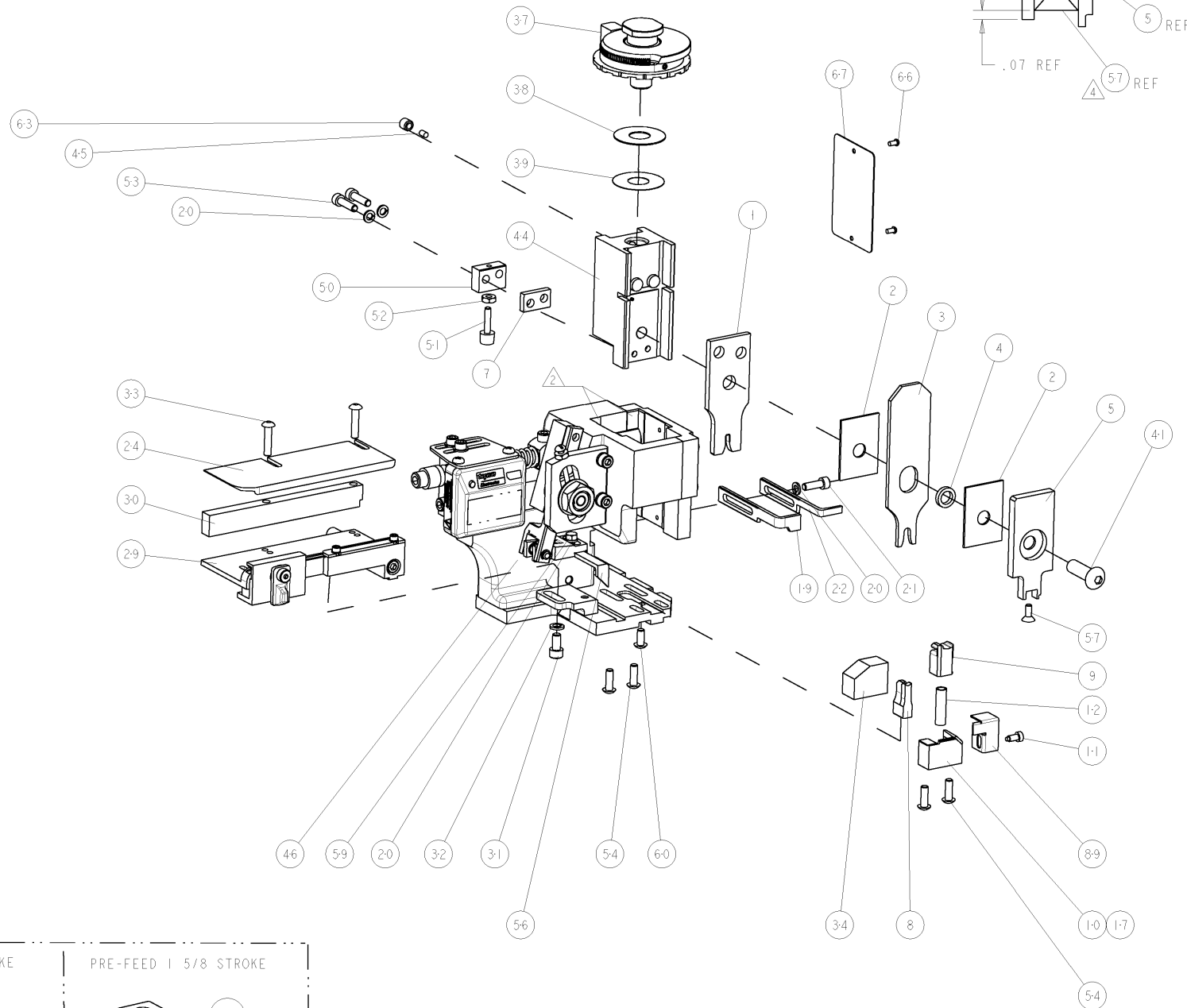
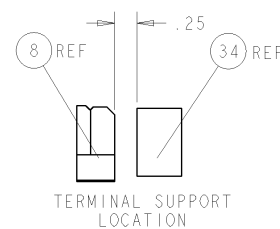
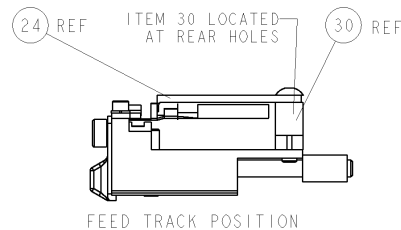
TE Connectivity	
NAME	
FINE ADJUST SIDE FEED HDM APPLICATOR	
SIZE	CAGE CODE
DRAWING NO	RESTRICTED TO
A3	©- 1855187

DIMENSIONS:	TOLERANCES UNLESS OTHERWISE SPECIFIED:
	0 PLC ±
	1 PLC ±
	2 PLC ±
	3 PLC ±
	4 PLC ±
ANGLES	±
MATERIAL	FINISH

- ① RECOMMENDED SPARE PARTS
- ② GREASE LIGHTLY
- ③ GUARD MUST BE IN PLACE WHEN OPERATING APPLICATOR IN A BENCH MACHINE
- ④ APPLY TORO-SEAL IN ALLEN SOCKET TO FILL HOLE AFTER FLAT HD HAS BEEN ADJUSTED TO CORRECT HEIGHT AT QUALIFICATION. APPLY PN 1-23419-5 LOC-TITE TO THREADS.
- ⑤ WIRE SIZE NOT RECOMMENDED BY PACKARD FOR THIS TERMINAL.



-	-	-	REF	-	..	455749-1	GUARD WINDOW	116
-	-	REF	-	-	..	679532-1	INSERT, GUARD	115
-	I	I	I	I	-	1-21002-7	SCR, BTN SKT HD CAP 6-32 X .375	91
-	I	I	I	I	-	318563-1	GUARD, FRONT CHIP	89
-	I	I	I	I	-	4088040	SF APPL INST 408-8040	72
-	I	I	I	I	-	217238-1	GENERAL INSTRUCTION PKG	71
-	I	I	I	I	-	461264-5	PLATE, IDENTIFICATION	67
-	2	2	2	2	-	21017-2	SCREW, DRIVE	66
-	I	I	I	I	-	21009-2	SCR, SET, SELF LOCKING 1/4-20 X .250	63
-	I	I	I	I	-	27233-8	SCR, BHSC, SELF-LOCKING, 8-32 X .375	60
-	I	I	I	I	-	2-22603-0	SCR, HEX HD CAP 8-32 X .312	59
-	I	I	I	I	-	1-21003-9	SCR, FLT SKT HD CAP 6-32 X .375	57
-	I	I	I	I	-	458537-2	PAWL, FEED	56
-	4	4	4	4	-	2-21002-2	SCR, BTN SKT HD CAP 8-32 X .500	54
-	2	2	2	2	-	2-21000-8	SCR, SKT HD CAP 8-32 X .625	53
-	I	I	I	I	-	21018-5	NUT, HEX, REG 6-32	52
-	I	I	I	I	-	811242-2	BUMPER, HOLD DOWN	51
-	I	I	I	I	-	690753-1	SPACER, TONKER	50
-	-	I	-	-	..	690602-6	CAM, PRE FEED, I 5/8	49
-	-	-	I	-	..	690602-5	CAM, PRE FEED, I 1/8	48
-	I	-	-	I	-	690501-4	CAM, POST FEED, I 5/8	47
-	I	I	I	I	-	459456-1	APPL. BASIC SUB ASSY (SIDE WISE MQCA)	46
-	I	I	I	I	-	690191-1	PLUG, NYLON	45
-	I	I	I	I	-	1-819307-3	RAM, SIDE FEED	44
-	I	I	I	I	-	7-21002-9	SCR, BTN SKT HD CAP 5/16-24 X 1.00	41
-	I	I	I	I	-	690125-1	SHIM SUB-ASSY	39
-	I	I	I	I	-	1-469367-2	SHIM	38
-	I	I	I	I	-	879103-2	FINE ADJUST HEAD ASSEMBLY	37
-	I	I	I	I	-	690786-3	TERMINAL SUPPORT	34
-	2	2	2	2	-	2-21002-4	SCR, BTN SKT HD CAP 8-32 X .750	33
-	I	I	I	I	-	21024-5	WASHER, SPRG LOCK, REG NO 10	32
-	I	I	I	I	-	3-21000-4	SCR, SKT HD CAP 10-32 X .375	31
-	I	I	I	I	-	1320908-2	SPACER, STRIP GUIDE	30
-	I	I	I	I	-	1633091-7	ASSEMBLY, STRIP GUIDE	29
-	I	I	I	I	-	1-455888-0	SPACER, CRIMPER	28
-	I	I	I	I	-	1320928-3	PLATE, STRIP GUIDE	24
-	I	-	-	I	-	690472-2	STRIPPER	22
-	I	I	I	I	-	2-21000-7	SCR, SKT HD CAP 8-32 X .500	21
-	4	4	4	4	-	21024-4	WASHER, SPRG LOCK, REG NO 8	20
-	-	I	I	-	-	691353-1	STRIPPER	19
-	I	-	-	-	-	679625-2	SHEAR HOLDER, FRONT (NO CUT)	17
-	I	I	I	I	-	3-22280-3	SPRING, COMPRESSION	12
-	I	I	I	I	-	690461-2	STOP, SHEAR	11
-	-	I	I	I	-	1-690459-0	SHEAR HOLDER, FRONT	10
-	I	I	I	I	-	318707-2	FLOATING SHEAR, FRONT	9
I	I	I	I	I	-	3-1633116-7	ANVIL, COMBINATION	8
-	I	I	I	I	-	2-240641-4	SPACER	7
-	I	I	I	I	-	318701-1	DEPRESSOR, SHEAR	5
-	I	I	I	I	-	238011-4	BLOCK, CRIMPER SPACER	4
I	I	I	I	I	-	5-1583690-3	CRIMPER, INSUL O	3
-	I	I	I	I	-	1-455888-0	SPACER, CRIMPER	2
I	I	I	I	I	-	7-1490019-5	CRIMPER, WIRE PREMIUM	1

[illegible]

Mouser Electronics

Authorized Distributor

Click to View Pricing, Inventory, Delivery & Lifecycle Information:

[TE Connectivity:](#)

[1855187-6](#)