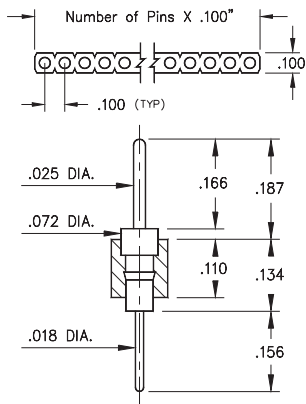
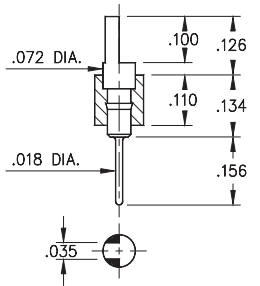


# INTERCONNECTS

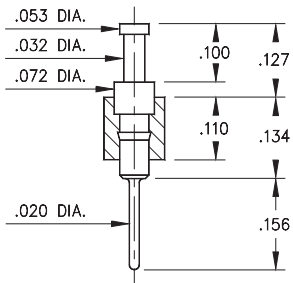
## SERIES 350, 360, 370, 380 • .100" GRID SOLDER TAIL • SINGLE ROW STRIPS



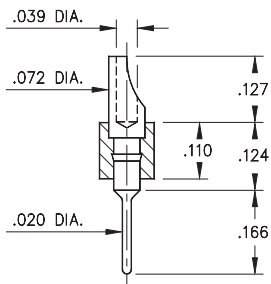
**FIG. 1**



**FIG. 2**



**FIG. 3**



**FIG. 4**

- Series 350, 360, 370 & 380 single row header strips come in various styles (pin, slotted, head, turret and solder cup) with pluggable solder tails

350...001 uses pin #0290

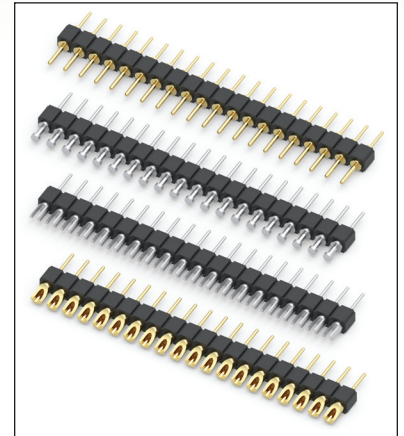
360...001 uses pin #0282

370...001 uses pin #0700

380...001 uses pin #8000

See pages 215 and 216 for details

- Insulators are high temperature thermoplastic, suitable for all soldering operations



### ORDERING INFORMATION

	Series 350...001	.025" / .018" Dia. Solder Tails
<b>FIG. 1</b>	350-XX-1	-00-001000 Specify number of pins 01-64
<b>FIG. 2</b>	Series 360...001	Slotted Head / Solder Tail
	360-XX-1	-00-001000 Specify number of pins 01-64
<b>FIG. 3</b>	Series 370...001	Turret / Solder Tail
	370-XX-1	-00-001000 Specify number of pins 01-64
<b>FIG. 4</b>	Series 380...001	Solder Cup / Solder Tail
	380-XX-1	-00-001000 Specify number of pins 01-64



XX=Plating Code  
See Below

For  
Electrical, Mechanical  
& Environmental Data,  
See page 264

SPECIFY PLATING CODE XX=	10	90	40	
Pin Plating 	10 μ" Au	200 μ" Sn/Pb	200 μ" Sn	



# Mouser Electronics

Authorized Distributor

Click to View Pricing, Inventory, Delivery & Lifecycle Information:

## Mill-Max:

[380-10-164-00-001000](#) [350-90-132-00-001000](#) [350-10-132-00-001000](#) [350-10-120-00-001000](#) [350-10-116-00-001000](#) [360-90-102-00-001000](#) [350-10-105-00-001000](#) [350-90-120-00-001000](#) [350-10-164-00-001000](#) [350-40-164-00-001000](#) [350-40-132-00-001000](#) [350-40-120-00-001000](#) [350-10-102-00-001000](#) [350-10-103-00-001000](#) [350-90-164-00-001000](#) [350-90-116-00-001000](#) [370-10-164-00-001000](#) [370-40-120-00-001000](#) [370-90-120-00-001000](#) [380-90-132-00-001000](#) [380-40-120-00-001000](#) [380-90-120-00-001000](#) [380-10-132-00-001000](#) [370-10-132-00-001000](#) [380-40-132-00-001000](#) [380-10-120-00-001000](#) [380-40-164-00-001000](#) [380-90-164-00-001000](#) [370-10-120-00-001000](#) [370-40-132-00-001000](#) [370-90-132-00-001000](#) [370-90-164-00-001000](#) [370-40-164-00-001000](#) [350-10-101-00-001000](#) [380-10-109-00-001000](#) [380-10-102-00-001000](#) [380-10-108-00-001000](#) [350-10-107-00-001000](#)